

- CONSTRUCTION NOTES**
- LIMIT OF ASPHALT OVERLAY
  - CONSTRUCT NEW ASPHALT OVERLAY
  - MILL EXISTING ASPHALT PAVEMENT
  - REMOVE EXISTING AND CONSTRUCT NEW 100mm CONCRETE SIDEWALK (SD-228A)
  - RENEW EXISTING BARRIER CURB (SD-205)
  - INSTALL NEW CURB AND GUTTER INLET (SD-024)
  - REMOVE EXISTING CONCRETE AND CONSTRUCT NEW 150mm REINFORCED CONCRETE APPROACH (SD-235)
  - CONSTRUCT NEW 100mm CONCRETE SIDEWALK (SD-228A)
  - CONSTRUCT NEW 75mm LIP CURB (SD-202A)
  - INSTALL NEW MOUNTABLE CURB AND GUTTER FRAME AND COVER (AP-015, AP-016)
  - INSTALL NEW CATCH BASIN FRAME (TF39)
  - INSTALL GLASS GRID AS DIRECTED BY CONTRACT ADMINISTRATOR

- GENERAL NOTES**
- PAVEMENT DIMENSIONS ARE TO BACK OF CURB
  - ALL CURB RADII UNDER 15.0m SHALL BE MODIFIED (SD-203B)
  - ADD 200.00mm TO ALL DESIGN ELEVATION TO OBTAIN GEODETIC ELEVATIONS
  - CURB REPLACEMENT AS DIRECTED BY CONTRACT ADMINISTRATOR
  - INSTALL DETECTABLE WARNING SURFACE TILES AT CURB RAMPS AS PER CW3326
  - ASPHALT TIE-INS ON APPROACHES TO BE DETERMINED IN THE FIELD BY THE CONTRACT ADMINISTRATOR
  - PAVEMENT REPAIRS SHOWN ARE ONLY A REPRESENTATIVE SAMPLE OF THE TENDER QUANTITIES

**PRELIMINARY**  
NOT TO BE USED FOR  
CONSTRUCTION

**METRIC**  
WHOLE NUMBERS INDICATE MILLIMETERS  
DECIMALIZED NUMBERS INDICATE METERS

TENDER 452-2019

⊕	HYDRANT	◆	---	LDS/WWS	---	CONCRETE	---
⊗	VALVE	●	---	WATERMAIN	---	CONCRETE SIDEWALK	---
⊙	CURB STOP	●	---	GAS	---	ASPHALT	---
○	MANHOLE	●	---	TRAFFIC SIGNALS	---	PARTIAL DEPTH	---
□	CATCH BASIN	●	---	HYDRO/STREET LIGHT	---	GRAVEL	---
△	CURB INLET	▲	---	MTS/SHAW	---	LEGEND - PLAN	PROPOSED
○	HYDRO POLE	●	---	CURB RENEWAL	---	EXISTING	---
○	LIGHT STANDARD	●	---	PROPERTY LINE	---	SOUTH SIDEWALK	---
○	TRAFFIC SIGNAL POLE	●	---	RAMP CURB	---	NORTH GUTTER	---
+	SURVEY BAR	+	---	ELEVATIONS	(31.000)	CENTER LINE	---
⊕	GEODETIC BENCH MARK	⊕	---	TREE	---	SOUTH GUTTER	---
---	EXISTING	---	---	---	---	---	---
---	LEGEND - PLAN	---	---	---	---	---	---

**LOCATION APPROVED UNDERGROUND STRUCTURES**

DATE: \_\_\_\_\_

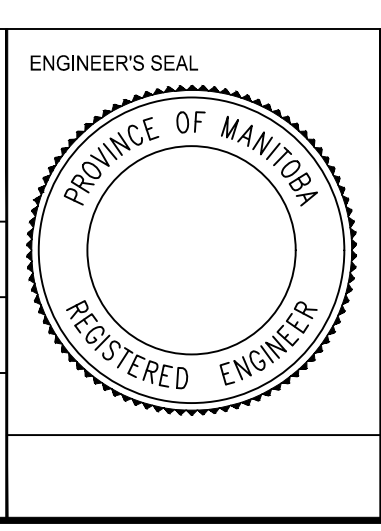
NOTE: LOCATION OF UNDERGROUND STRUCTURES AS SHOWN ARE BASED ON THE BEST INFORMATION AVAILABLE. BUT NO GUARANTEE IS GIVEN THAT ALL EXISTING UTILITIES ARE SHOWN OR THAT THE GIVEN LOCATIONS ARE EXACT. CONFIRMATION OF EXISTENCE AND EXACT LOCATION OF ALL SERVICES MUST BE OBTAINED FROM THE INDIVIDUAL UTILITIES BEFORE PROCEEDING WITH CONSTRUCTION.

B.M. ELEV.	IB @ NW CORNER 1052 STARDUST AV
	231.961

**ENGINEERING DIVISION**  
TECHNOLOGY SERVICES BRANCH  
106 - 1155 PACIFIC AVE

DESIGNED BY	J.W.	CHECKED BY	G.K.
DRAWN BY	J.W.	APPROVED BY	

HOR. SCALE: 1 : 250  
VERTICAL: 1 : 10  
DATE: 2019/04/29



**THE CITY OF WINNIPEG**  
PUBLIC WORKS DEPARTMENT

**STARDUST AVE**  
FROM WATSON ST TO McPHILLIPS ST  
ASPHALT OVERLAY AND ASSOCIATED WORKS  
FROM STA. 3+20 TO STA. 4+40

CITY DRAWING NUMBER	SE-19-15
SHEET	24 OF 26
<b>3</b>	