

CONSTRUCTION NOTES

1. LIMIT OF ASPHALT OVERLAY
2. CONSTRUCT NEW ASPHALT OVERLAY
3. MILL EXISTING ASPHALT PAVEMENT
4. REMOVE EXISTING AND CONSTRUCT NEW 100mm CONCRETE SIDEWALK (SD-228A)
5. RENEW EXISTING BARRIER CURB (SD-205)
6. INSTALL NEW CURB AND GUTTER INLET (SD-024)
7. REMOVE EXISTING CONCRETE AND CONSTRUCT NEW 150mm REINFORCED CONCRETE APPROACH (SD-235)
8. CONSTRUCT NEW 100mm CONCRETE SIDEWALK (SD-228A)
9. CONSTRUCT NEW 75mm LIP CURB (SD-202A)
10. INSTALL NEW MOUNTABLE CURB AND GUTTER FRAME AND COVER (AP-015, AP-016)
11. INSTALL NEW CATCH BASIN FRAME (TF39)
12. INSTALL GLASS GRID AS DIRECTED BY CONTRACT ADMINISTRATOR

GENERAL NOTES

- A. PAVEMENT DIMENSIONS ARE TO BACK OF CURB
- B. ALL CURB RADII UNDER 15.0m SHALL BE MODIFIED (SD-203B)
- C. ADD 200.000m TO ALL DESIGN ELEVATION TO OBTAIN GEODETIC ELEVATIONS
- D. CURB REPLACEMENT AS DIRECTED BY CONTRACT ADMINISTRATOR
- E. INSTALL DETECTABLE WARNING SURFACE TILES AT CURB RAMPS AS PER CW3326
- F. ASPHALT TIE-INS ON APPROACHES TO BE DETERMINED IN THE FIELD BY THE CONTRACT ADMINISTRATOR
- G. PAVEMENT REPAIRS SHOWN ARE ONLY A REPRESENTATIVE SAMPLE OF THE TENDER QUANTITIES

PRELIMINARY
NOT TO BE USED FOR
CONSTRUCTION

METRIC
WHOLE NUMBERS INDICATE MILLIMETERS
DECIMALIZED NUMBERS INDICATE METERS

TENDER 452-2019

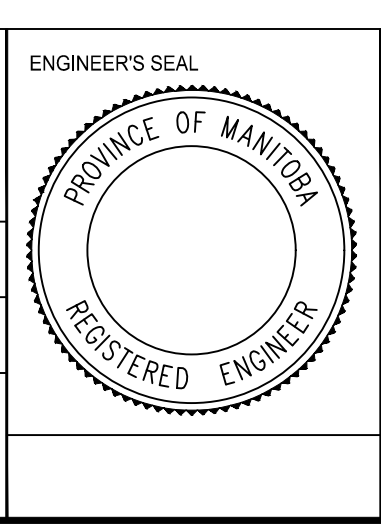
| EXISTING | LEGEND - PLAN | PROPOSED | EXISTING | LEGEND - PLAN | PROPOSED | EXISTING | LEGEND - PROFILE | PROPOSED |
|----------|---------------------|----------|----------|--------------------|----------|----------|-------------------|----------|
| | HYDRANT | | | LDS/WWS | | | CONCRETE | |
| | VALVE | | | WATERMAIN | | | CONCRETE SIDEWALK | |
| | CURB STOP | | | GAS | | | ASPHALT | |
| | MANHOLE | | | TRAFFIC SIGNALS | | | PARTIAL DEPTH | |
| | CATCH BASIN | | | HYDRO/STREET LIGHT | | | GRAVEL | |
| | CURB INLET | | | MTS/SHAW | | | LEGEND - PLAN | |
| | HYDRO POLE | | | CURB RENEWAL | | | EXISTING | |
| | LIGHT STANDARD | | | PROPERTY LINE | | | SOUTH SIDEWALK | |
| | TRAFFIC SIGNAL POLE | | | RAMP CURB | | | NORTH GUTTER | |
| | SURVEY BAR | | | ELEVATIONS | | | CENTER LINE | |
| | GEODETIC BENCH MARK | | | TREES | | | SOUTH GUTTER | |

LOCATION APPROVED UNDERGROUND STRUCTURES

DATE: _____

NOTE:
LOCATION OF UNDERGROUND STRUCTURES AS SHOWN ARE BASED ON THE BEST INFORMATION AVAILABLE. BUT NO GUARANTEE IS GIVEN THAT ALL EXISTING UTILITIES ARE SHOWN OR THAT THE GIVEN LOCATIONS ARE EXACT. CONFIRMATION OF EXISTENCE AND EXACT LOCATION OF ALL SERVICES MUST BE OBTAINED FROM THE INDIVIDUAL UTILITIES BEFORE PROCEEDING WITH CONSTRUCTION.

| | |
|--|---------------------------------|
| B.M. ELEV. | IB @ NW CORNER 1052 STARDUST AV |
| | 231.961 |
| ENGINEERING DIVISION TECHNOLOGY SERVICES BRANCH 106 - 1155 PACIFIC AVE | |
| DESIGNED BY | J.W. |
| CHECKED BY | G.K. |
| DRAWN BY | J.W. |
| APPROVED BY | |
| HOR. SCALE: | 1 : 250 |
| VERTICAL: | 1 : 10 |
| DATE | 2019/04/29 |
| NO. | REVISIONS |
| | DATE |
| | BY |



THE CITY OF WINNIPEG
PUBLIC WORKS DEPARTMENT

STARDUST AVE
FROM WATSON ST TO McPHILLIPS ST
ASPHALT OVERLAY AND ASSOCIATED WORKS
FROM STA. 2+00 TO STA. 3+20

| |
|---------------------------------|
| CITY DRAWING NUMBER SE-19-14 |
| SHEET 23 OF 26 |
| 2 |