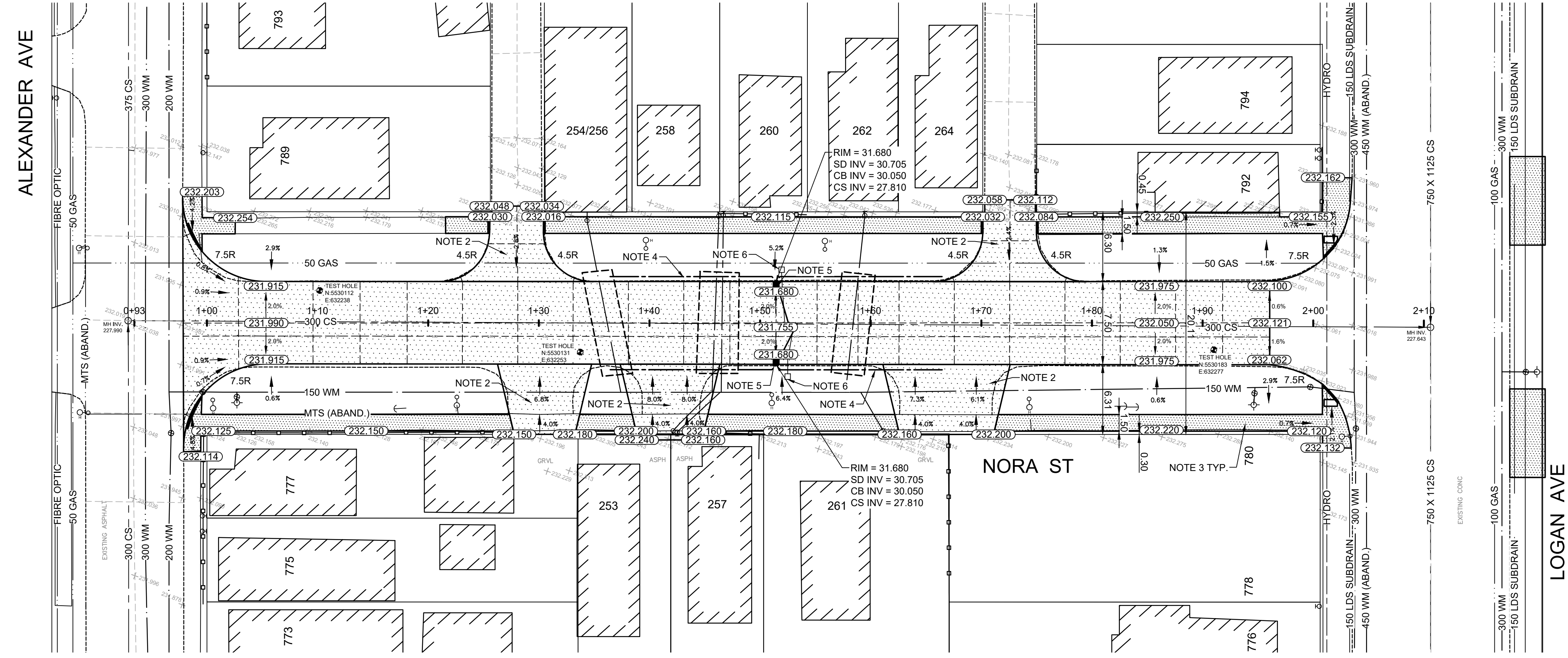


TYPICAL CROSS SECTION
N.T.S



ALL WATER SERVICES WITHIN THE LIMITS OF THE RECONSTRUCTION SHALL BE INSULATED AS PER SPECIFICATION E-10

PLAN :

- CONSTRUCTION NOTES**
1. REMOVE EXISTING PAVEMENT AND CONSTRUCT NEW 150mm CONCRETE PAVEMENT
 2. REMOVE EXISTING APPROACH AND CONSTRUCT NEW 150mm REINFORCED CONCRETE APPROACH
 3. REMOVE EXISTING AND CONSTRUCT NEW 100mm CONCRETE SIDEWALK (SD-228A)
 4. INSTALL 15m SUBDRAINS (SD-245) CONNECT TO CATCH BASIN AND CAP ENDS AS PER CW 3120
 5. INSTALL NEW 1800 CATCH BASIN WITH CURB & GUTTER INLET (SD-024) CONNECT TO EXISTING COMBINED SEWER AS PER CW 2130
 6. ABANDON EXISTING CATCHBASIN AS PER CW 2130

- GENERAL NOTES**
- A. PAVEMENT DIMENSIONS ARE TO BACK OF CURB
 - B. ALL CURB RADII UNDER 15.0m SHALL BE MODIFIED (SD-203B)
 - C. ADD 200.000m TO ALL DESIGN ELEVATION TO OBTAIN GEODETIC ELEVATIONS
 - D. CURB REPLACEMENT AS DIRECTED BY CONTRACT ADMINISTRATOR
 - E. INSTALL DETECTABLE WARNING SURFACE TILES AS DIRECTED BY CONTRACT ADMINISTRATOR (CW 3326)

PRELIMINARY
NOT TO BE USED FOR CONSTRUCTION

METRIC
WHOLE NUMBERS INDICATE MILLIMETERS
DECIMALIZED NUMBERS INDICATE METERS

TENDER NO. 452-2019

EXISTING	LEGEND - PLAN	PROPOSED	EXISTING	LEGEND - PLAN	PROPOSED	EXISTING	LEGEND - PROFILE	PROPOSED
⊕	HYDRANT	◆	---	LDS/WWS	---	▨	CONCRETE	▨
⊗	VALVE	◆	---	WATERMAIN	---	▨	CONCRETE SIDEWALK	▨
○	CURB STOP	◆	---	GAS	---	▨	ASPHALT	▨
⊙	MANHOLE	◆	---	TRAFFIC SIGNALS	---	---	LEGEND - PLAN	PROPOSED
□	CATCH BASIN	◆	---	HYDRO/STREET LIGHT	---	---	LEGEND - PROFILE	PROPOSED
△	CURB INLET	◆	---	MTS/SHAW	---	---	WEST GUTTER	---
○	HYDRO POLE	◆	---	CURB RENEWAL	---	---	CENTER LINE	---
○	LIGHT STANDARD	◆	---	PROPERTY LINE	---	---	EAST GUTTER	---
○	TRAFFIC SIGNAL POLE	◆	---	RAMP CURB	---	---	NORTH PROPERTY LINE	---
+	SURVEY BAR	◆	---	ELEVATIONS	---	---	SOUTH PROPERTY LINE	---
⊕	GEODETIC BENCH MARK	◆	---	TREE	---	---	---	---

LOCATION APPROVED UNDERGROUND STRUCTURES

SURF. U/G STRUCTURES COMMITTEE DATE

NOTE:
LOCATION OF UNDERGROUND STRUCTURES AS SHOWN ARE BASED ON THE BEST INFORMATION AVAILABLE. BUT NO GUARANTEE IS GIVEN THAT ALL EXISTING UTILITIES ARE SHOWN OR THAT THE GIVEN LOCATIONS ARE EXACT. CONFIRMATION OF EXISTENCE AND EXACT LOCATION OF ALL SERVICES MUST BE OBTAINED FROM THE INDIVIDUAL UTILITIES BEFORE PROCEEDING WITH CONSTRUCTION.

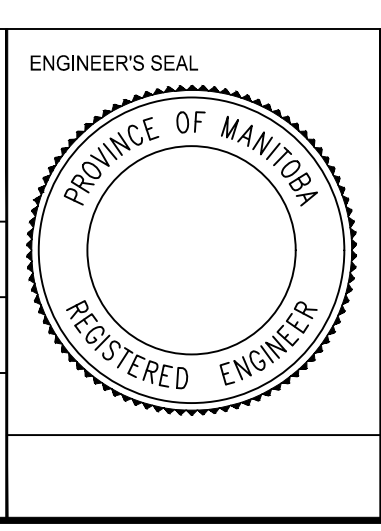
B.M. ELEV. IB @ S.W. CORNER LOGAN AV AND NORA ST
ELEV. 231.986

ENGINEERING DIVISION
TECHNOLOGY SERVICES BRANCH
106 - 1155 PACIFIC AVE

DESIGNED BY R.W. CHECKED BY R.W.
DRAWN BY J.W. APPROVED BY

HOR. SCALE: 1:250
VERTICAL: 1:10

DATE 2019/04/29



THE CITY OF WINNIPEG
PUBLIC WORKS DEPARTMENT

NORA STREET
FROM LOGAN AVE TO ALEXANDER AVE
CONCRETE RECONSTRUCTION AND ASSOCIATED WORKS
FROM STA. 0+93 TO STA. 2+11

CITY DRAWING NUMBER SE-19-12
SHEET 17 OF 26

1