

**PHASE I  
Stage IV**

**PHASE I  
Stage III**

**TRAFFIC STAGING**



REFER TO E6. TRAFFIC MANAGEMENT OF THE TENDER DOCUMENT FOR ADDITIONAL INFORMATION REGARDING TRAFFIC STAGING.

**WARNING**  
IF POWER EQUIPMENT OR EXPLOSIVES ARE TO BE USED FOR EXCAVATION ON THIS PROJECT THE CONTRACTOR MUST:  
1) OBTAIN CLEARANCE FROM THE GAS UTILITY PRIOR TO EXCAVATION.  
2) TAKE PRECAUTION TO AVOID DAMAGE TO GAS UTILITY INSTALLATIONS.  
SEE PROVINCIAL REGULATION 210/72 FOR DETAILS

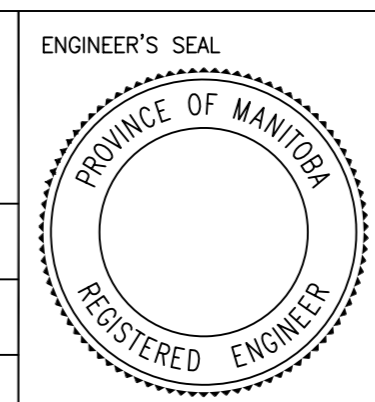
**PRELIMINARY**  
NOT TO BE USED FOR CONSTRUCTION

TENDER NO. 4-2019

METRIC  
WHOLE NUMBERS INDICATE MILLIMETRES  
DECIMALIZED NUMBERS INDICATE METRES

LOCATION APPROVED UNDERGROUND STRUCTURES		B.M. ELEV.	
SUPR. U/G STRUCTURES	DATE		
COMMITTEE			
NOTE: LOCATION OF UNDERGROUND STRUCTURES AS SHOWN ARE BASED ON THE BEST INFORMATION AVAILABLE, BUT NO GUARANTEE IS GIVEN THAT ALL EXISTING UTILITIES ARE SHOWN OR THAT THE GIVEN LOCATIONS ARE EXACT. CONFIRMATION OF EXISTENCE AND EXACT LOCATION OF ALL SERVICES MUST BE OBTAINED FROM THE INDIVIDUAL UTILITIES BEFORE PROCEEDING WITH CONSTRUCTION.			
2.	ISSUED FOR TENDER	18/02/2019	RW
1.	SUBMIT FOR PLAN APPROVAL	08/02/2019	RW
NO.	REVISIONS	DATE	BY

ENGINEERING DIVISION TECHNOLOGY SERVICES BRANCH 106 - 1155 PACIFIC AVE			
DESIGNED BY	AP	CHECKED BY	
DRAWN BY	AP	APPROVED BY	
HOR. SCALE:		VERTICAL:	
DATE 14/02/2019			



**THE CITY OF WINNIPEG**  
PUBLIC WORKS DEPARTMENT

**ASSINIBOINE PARK DRIVE**  
FROM COMMISSARY ROAD TO ZOO DRIVE  
MILL & FILL, ASPHALT RECONSTRUCTION AND ASSOCIATED WORKS  
TRAFFIC STAGING: PHASE I - Stage III & Stage IV

CITY DRAWING NUMBER  
P-3504-28  
SHEET 28 OF 28

9