

- GENERAL NOTES**
- A. PAVEMENT DIMENSIONS ARE TO BACK OF CURB
 - B. ALL CURB RADII UNDER 15.0m SHALL BE MODIFIED
 - C. ADD 200.00mm TO ALL DESIGN ELEVATION TO OBTAIN GEODETIC ELEVATIONS
 - D. CURB REPLACEMENT AS DIRECTED BY CONTRACT ADMINISTRATOR
 - E. CONTRACTOR TO CONFIRM THE LOCATION OF ALL UTILITIES/SERVICES IN THE FIELD PRIOR TO CONSTRUCTION
 - F. ADJUST ALL EXISTING WATER VALVES AND CURB STOPS TO GRADE

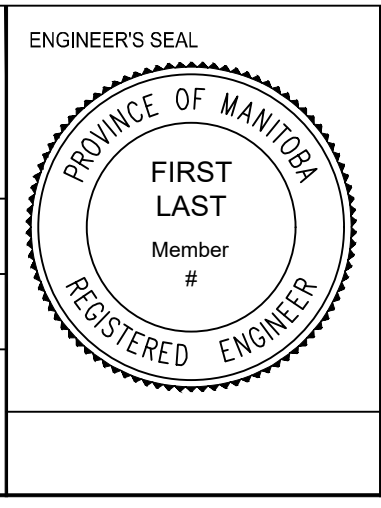
PRELIMINARY
NOT TO BE USED FOR
CONSTRUCTION

METRIC
WHOLE NUMBERS INDICATE MILLIMETERS
DECIMALIZED NUMBERS INDICATE METERS

TENDER NO. 4-2019

LOCATION APPROVED UNDERGROUND STRUCTURES		B.M. ELEV.
SUPR. U/G STRUCTURES COMMITTEE	DATE	
NOTE: LOCATION OF UNDERGROUND STRUCTURES AS SHOWN ARE BASED ON THE BEST INFORMATION AVAILABLE. BUT NO GUARANTEE IS GIVEN THAT ALL EXISTING UTILITIES ARE SHOWN OR THAT THE GIVEN LOCATIONS ARE EXACT. CONFIRMATION OF EXISTENCE AND EXACT LOCATION OF ALL SERVICES MUST BE OBTAINED FROM THE INDIVIDUAL UTILITIES BEFORE PROCEEDING WITH CONSTRUCTION.		
NO.	REVISIONS	DATE BY

ENGINEERING DIVISION TECHNOLOGY SERVICES BRANCH 106 - 1155 PACIFIC AVE			
DESIGNED BY	R.W.	CHECKED BY	R.W. / A.M.C.
DRAWN BY	J.D.	APPROVED BY	
HOR. SCALE: 1 : 500		VERTICAL:	
1.	ISSUE FOR TENDER	18/03/19	R.W.
1.	SUBMIT FOR PLAN APPROVAL	08/03/19	R.W.
DATE		18/03/2019	



THE CITY OF WINNIPEG
PUBLIC WORKS DEPARTMENT

ROBLIN BOULEVARD WESTBOUND
FROM ASSINIBOINE PARK DRIVE TO SHAFTESBURY BOULEVARD
CONCRETE RECONSTRUCTION AND ASSOCIATED WORKS

HORIZONTAL GEOMETRY
FROM STA. 2+10 TO STA. 9+30

CITY DRAWING NUMBER P-3504-18
SHEET 18 OF 28
18