

- CONSTRUCTION NOTES**
- REMOVE EXISTING PAVEMENT AND CONSTRUCT NEW 230mm CONCRETE PAVEMENT (PLAIN DOWELLED)
  - CONSTRUCT SEPARATE CONCRETE SPLASH STRIP (SD-223B) SEE DETAIL DRAWING No. 14
  - CONSTRUCT 230mm CONCRETE PAVEMENT WIDENING AND SAFETY CURB (SD-206B) SEE DETAIL DRAWING No. 15
  - CONSTRUCT NEW INTEGRAL CURB RAMP
  - RENEW EXISTING CONCRETE SIDEWALK
  - INSTALL NEW DETECTABLE WARNING SURFACE TILE
  - CONSTRUCT MONOLITHIC CONCRETE SPLASH STRIP (SD-223A)
  - PLANE EXISTING ASPHALT AND CONSTRUCT NEW ASPHALTIC PAVEMENT OVERLAY TYPE 1A
  - RELOCATE TRAFFIC SIGNAL (BY OTHERS)
  - INSTALL NEW CURB AND GUTTER INLET C/W CATCHBASIN (SD-024)
  - INSTALL NEW 150mm Ø SUBDRAIN (SD-245)
  - RE-GRADE EXISTING DITCH
  - INSTALL RIP RAP
  - RENEW EXISTING ASPHALT PATHWAY
  - REMOVE EXISTING PAVEMENT AND CONSTRUCT NEW ASPHALT PAVEMENT
  - REMOVE EXISTING CULVERT
  - INSTALL NEW CULVERT
  - CONSTRUCT SAFETY MEDIAN (SD-226B)
  - REMOVE EXISTING CONCRETE SIDEWALK AND REGRADE EXISTING BOULEVARD
  - REMOVE EXISTING CURB RAMP AND CONSTRUCT NEW BARRIER CURB (180mm HT. REVEAL)
  - CONSTRUCT NEW MONOLITHIC CURB RAMP
  - CONSTRUCT NEW CONCRETE SIDEWALK
  - ABANDON EXISTING DRAINAGE INLET
  - ABANDON EXISTING CATCH BASIN AS PER CW 2130
  - CONSTRUCT NEW SEPARATE BARRIER CURB (180mm HT. REVEAL)
  - CONSTRUCT CONCRETE MEDIAN SLAB (SD-227A)
  - REMOVE EXISTING PAVEMENT AND CONSTRUCT NEW 200mm CONCRETE PAVEMENT (REINFORCED)
  - CONSTRUCT NEW INTEGRAL MODIFIED BARRIER CURB (SD-203B)
  - CONSTRUCT 200mm CONCRETE PAVEMENT (REINFORCED) FOR OUTFRONT MEDIA BUS SHELTER PAD
  - RENEW EXISTING CURB AND GUTTER (SD-200)

- GENERAL NOTES**
- PAVEMENT DIMENSIONS ARE TO BACK OF CURB
  - ALL CURB RADII UNDER 15.0m SHALL BE MODIFIED
  - ADD 200.00mm TO ALL DESIGN ELEVATION TO OBTAIN GEODETIC ELEVATIONS
  - CURB REPLACEMENT AS DIRECTED BY CONTRACT ADMINISTRATOR
  - CONTRACTOR TO CONFIRM THE LOCATION OF ALL UTILITIES/SERVICES IN THE FIELD PRIOR TO CONSTRUCTION
  - ADJUST ALL EXISTING WATER VALVES AND CURB STOPS TO GRADE

**PRELIMINARY**  
NOT TO BE USED FOR CONSTRUCTION

**METRIC**  
WHOLE NUMBERS INDICATE MILLIMETERS  
DECIMALIZED NUMBERS INDICATE METERS

TENDER NO. 4-2019

EXISTING	LEGEND - PLAN	PROPOSED	EXISTING	LEGEND - PLAN	PROPOSED	EXISTING	LEGEND - PLAN	PROPOSED
	HYDRANT			LDS/NWS			CONCRETE	
	VALVE			WATERMAIN			CONCRETE SIDEWALK	
	CURB STOP			GAS			ASPHALT	
	MANHOLE			TRAFFIC SIGNALS			DITCH FLOW	
	CATCH BASIN			HYDRO/STREET LIGHT			DITCH - TOP OF SLOPE	
	CURB INLET			MTS			CULVERT	
	HYDRO POLE			CURB RENEWAL			LDS FLOW DIRECTION	
	LIGHT STANDARD			PROPERTY LINE			EDGE OF PAVEMENT	
	TRAFFIC SIGNAL POLE			RAMP CURB			ASPHALT CROSSOVER	
	SURVEY BAR			ELEVATIONS				
	GEODETIC BENCH MARK			TRELLINE				

**LOCATION APPROVED**  
UNDERGROUND STRUCTURES

SUPR. U/D STRUCTURES	DATE

**NOTE:**  
LOCATION OF UNDERGROUND STRUCTURES AS SHOWN ARE BASED ON THE BEST INFORMATION AVAILABLE BUT NO GUARANTEE IS GIVEN THAT ALL EXISTING UTILITIES ARE SHOWN OR THAT THE GIVEN LOCATIONS ARE EXACT. CONFIRMATION OF EXISTENCE AND EXACT LOCATION OF ALL SERVICES MUST BE OBTAINED FROM THE INDIVIDUAL UTILITIES BEFORE PROCEEDING WITH CONSTRUCTION.

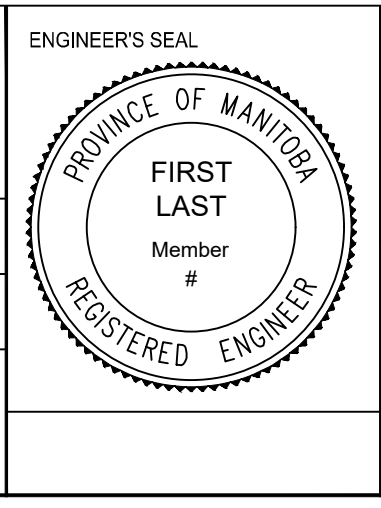
**ENGINEERING DIVISION**  
TECHNOLOGY SERVICES BRANCH  
106 - 1155 PACIFIC AVE

DESIGNED BY	R.W.	CHECKED BY	R.W. / A.M.C.

DESIGNED BY: J.D.      CHECKED BY:      APPROVED BY:     

HOR. SCALE: 1 : 250  
VERTICAL: 1 : 10

DATE: 18/03/2019



**THE CITY OF WINNIPEG**  
PUBLIC WORKS DEPARTMENT

**ROBLIN BOULEVARD WESTBOUND**  
FROM ASSINIBOINE PARK DRIVE TO SHAFTESBURY BOULEVARD  
CONCRETE RECONSTRUCTION AND ASSOCIATED WORKS  
FROM STA. 15+40 TO STA. 16+70

CITY DRAWING NUMBER  
P-3504-12  
SHEET 12 OF 28

12