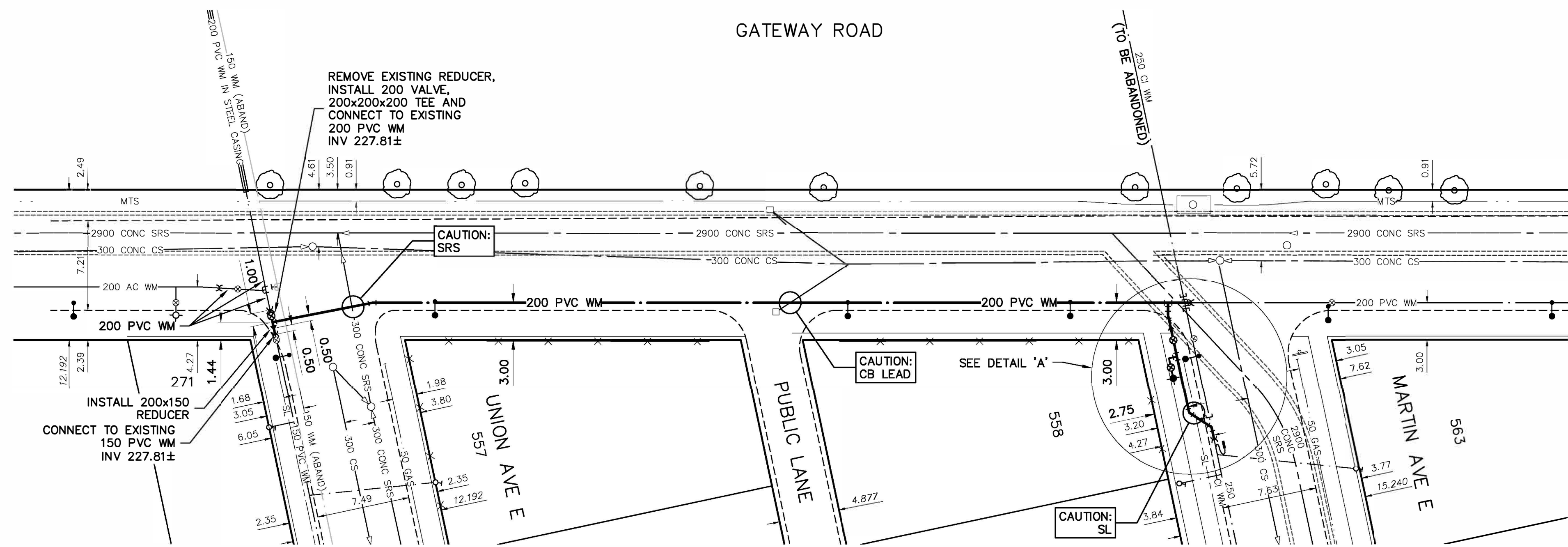


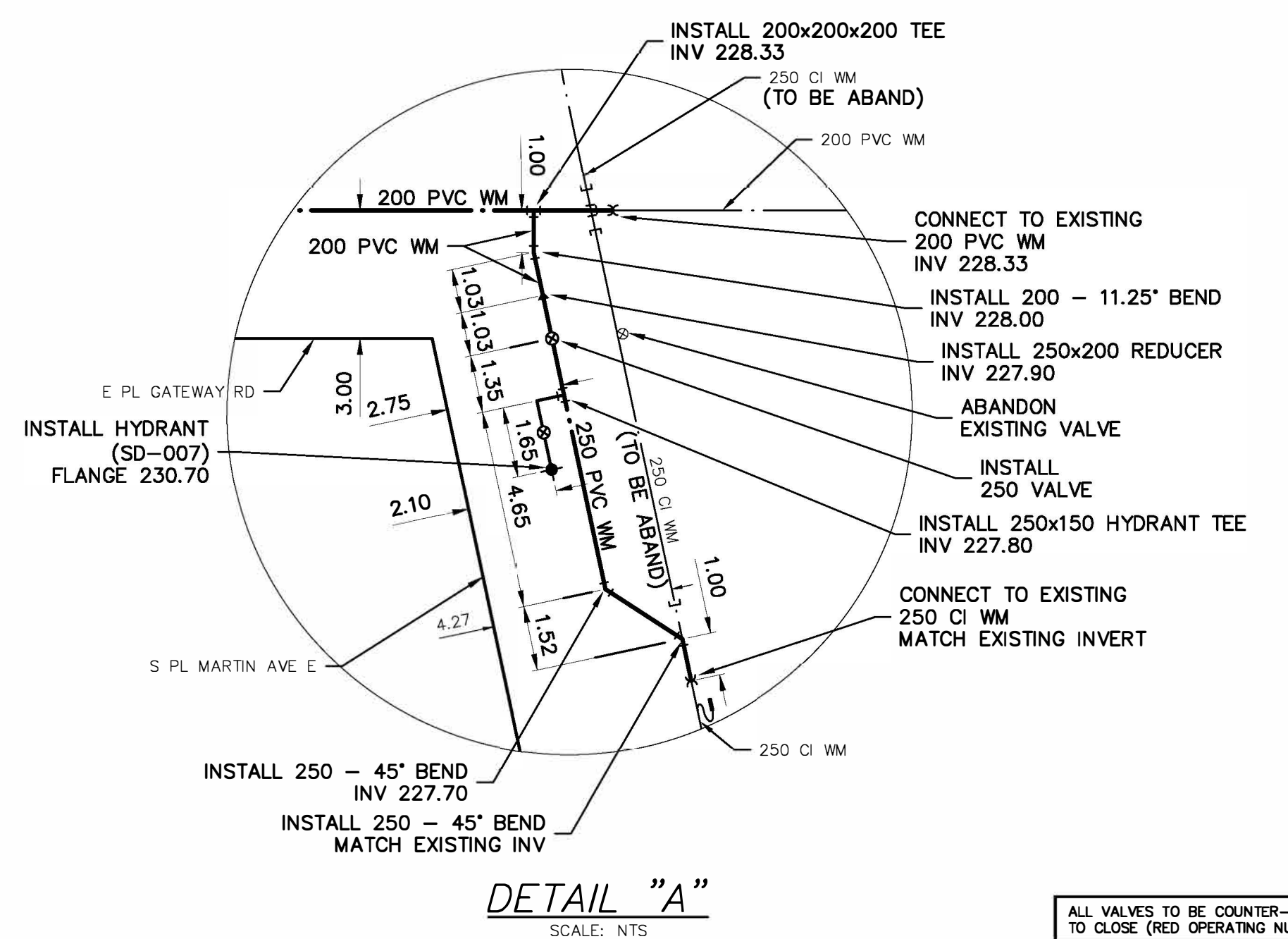
NOTE: CHAINAGES SHOWN ARE ALONG E. R. OF MARTIN AVE



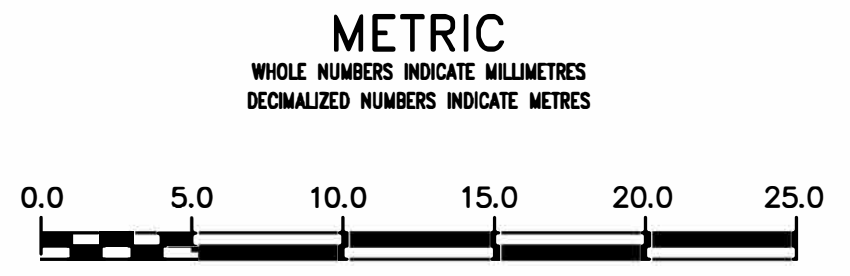
WATER SERVICE INFORMATION					
ADDRESS	SIZE (mm) MATERIAL (STREET)	SIZE (mm) MATERIAL (PROP.)	SHORT & LONG MEASUREMENT	CORP. LOCATION	REMARKS
558 MARTIN AV E	12 mm CU	12 mm CU	3 m E EL	12.2 m E EL GATEWAY	N.I.C.
557 UNION AV E	20 mm CU	12 mm CU	3.7 m E W BL	11.7 m E EL GATEWAY	W SC
561 UNION AV E	20 mm CU	20 mm CU	0.7 m W W BL	19.7 m E EL GATEWAY	E OF SC
271 GATEWAY RD	20 mm CU	12 mm LEAD	7.2 m E EL GATEWAY	OPP CS	N.I.C. SERVICED OFF UNION

* SERVICES TO BE RENEWED TO R. ALL OTHERS TO BE RECONNECTED

NOTE: LOCATION OF WATER SERVICES SHOWN ON DRAWINGS ARE APPROXIMATE. THE CONTRACTOR SHALL FIELD LOCATE ALL WATER SERVICES PRIOR TO CONSTRUCTION.



ALL VALVES TO BE COUNTER-CLOCKWISE TO CLOSE (RED OPERATING NUT)



ENGINEERS GEOSCIENTISTS MANITOBA
 Certificate of Authorization
 AECOM Canada Ltd.
 No. 4671 Date: 3/29/2019

REFER TO DRAWING D-15408 FOR CONSTRUCTION NOTES

WARNING
 IF POWER EQUIPMENT OR EXPLOSIVES ARE TO BE USED FOR EXCAVATION ON THIS PROJECT THE CONTRACTOR MUST:
 1) NOTIFY THE GAS COMPANY OF THE PROPOSED LOCATION OF EXCAVATION.
 2) TAKE PRECAUTION TO AVOID DAMAGE TO GAS COMPANY INSTALLATIONS.
 SEE PROVINCIAL REGULATION 210/72 FOR DETAILS

LOCATION APPROVED UNDERGROUND STRUCTURES
 SUPV. U/G STRUCTURES COMMITTEE DATE
 NOTE:
 LOCATION OF UNDERGROUND STRUCTURES AS SHOWN ARE BASED ON THE BEST INFORMATION AVAILABLE BUT NO GUARANTEE IS GIVEN THAT ALL EXISTING UTILITIES ARE SHOWN OR THAT THE GIVEN LOCATIONS ARE EXACT. CONFIRMATION OF EXISTENCE AND EXACT LOCATION OF ALL SERVICES MUST BE OBTAINED FROM THE INDIVIDUAL UTILITIES BEFORE PROCEEDING WITH CONSTRUCTION.

B.M. 27-030 ELEV. 230.897m	85R637 - S.W. Cor. Roch St. and Harrison Ave., Tilt on top of 0.05m dia. x 2.1m iron pipe, 2.1m E. of W.L. of Roch St. & on S.L. of Harrison Ave.
DESIGNED BY	JP
CHECKED BY	GSK
DRAWN BY	JP
APPROVED BY	
RELEASED FOR CONSTRUCTION	
SCALE: HORIZONTAL 1:250 VERTICAL 1:50	
DATE 2019/03/15	
PLOT DATE: 2019 03 29	

AECOM

ENGINEER'S SEAL
 PROVINCE OF MANITOBA
 K.W. FITCHELL
 REGISTERED PROFESSIONAL ENGINEER

THE CITY OF WINNIPEG
 WATER AND WASTE DEPARTMENT
 ENGINEERING DIVISION

2019 WATER MAIN RENEWALS CONTRACT 7

GATEWAY ROAD
 UNION AVENUE E TO MARTIN AVENUE E

SHEET 18 OF 19
 CITY DRAWING NUMBER D-15424

CONSULTANT DRAWING NUMBER C-0016

TENDER NUMBER: 377-2019
 CONTRACT NUMBER: 7

FILE PATH: \\comp1f001\Data\Projects\60595441\900-CAD-GIS\910-CAD\20-SHEETS\C
 FILE NAME: 60595441-SHT-01-C-1002