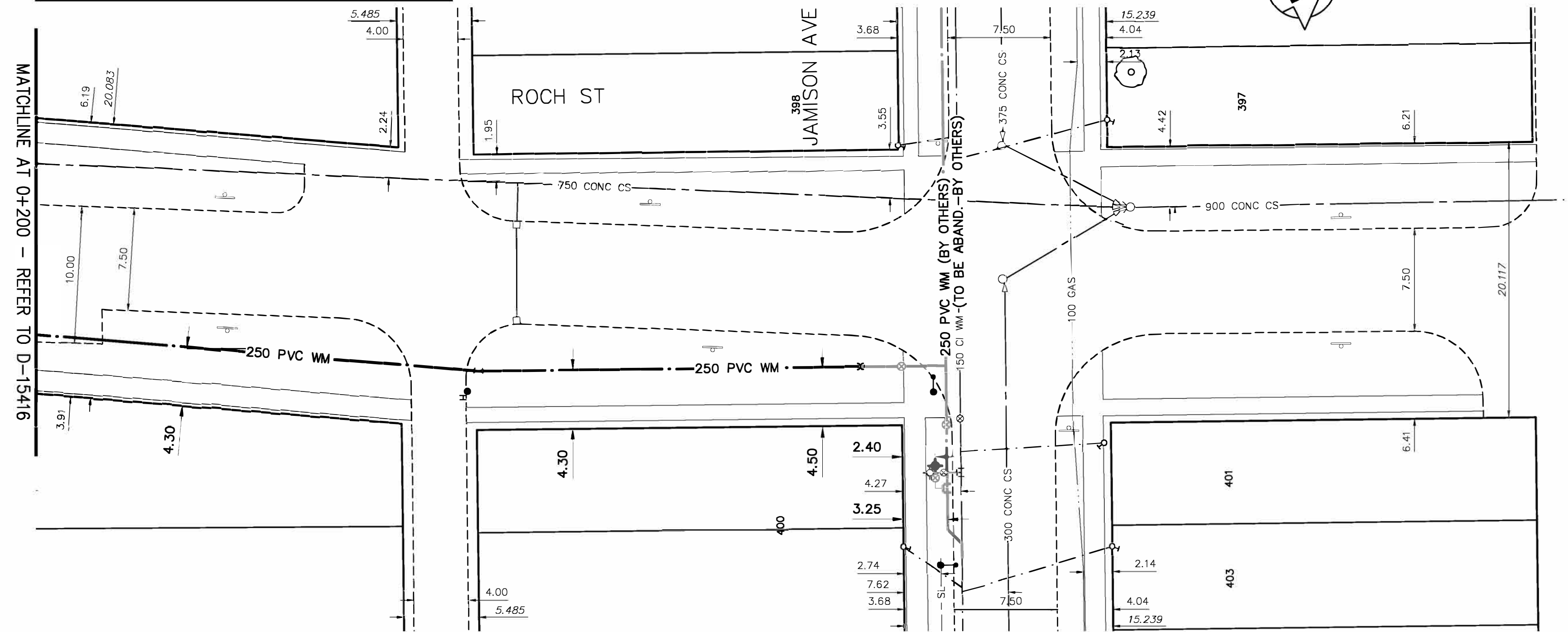
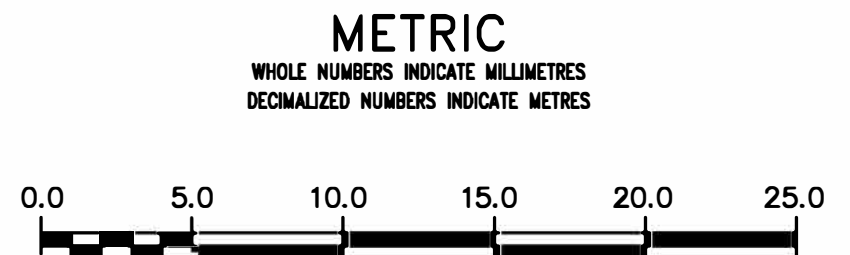


NOTE: CHAINAGES SHOWN ARE ALONG E. R. OF ROCH ST



ALL VALVES TO BE COUNTER-CLOCKWISE TO CLOSE (RED OPERATING NUT)



**ENGINEERS**  
**GEOSCIENTISTS**  
**MANITOBA**  
 Certificate of Authorization  
 AECOM Canada Ltd.  
 No. 4671 Date: 3/29/2019

REFER TO DRAWING D-15408 FOR CONSTRUCTION NOTES

**WARNING**  
 IF POWER EQUIPMENT OR EXPLOSIVES ARE TO BE USED FOR EXCAVATION ON THIS PROJECT THE CONTRACTOR MUST:  
 1) NOTIFY THE GAS COMPANY OF THE PROPOSED LOCATION OF EXCAVATION.  
 2) TAKE PRECAUTION TO AVOID DAMAGE TO GAS COMPANY INSTALLATIONS.  
 SEE PROVINCIAL REGULATION 210/72 FOR DETAILS

**LOCATION APPROVED**  
 UNDERGROUND STRUCTURES  
 SUPV. U/G STRUCTURES COMMITTEE DATE  
 NOTE:  
 LOCATION OF UNDERGROUND STRUCTURES AS SHOWN ARE BASED ON THE BEST INFORMATION AVAILABLE BUT NO GUARANTEE IS GIVEN THAT ALL EXISTING UTILITIES ARE SHOWN OR THAT THE GIVEN LOCATIONS ARE EXACT. CONFIRMATION OF EXISTENCE AND EXACT LOCATION OF ALL SERVICES MUST BE OBTAINED FROM THE INDIVIDUAL UTILITIES BEFORE PROCEEDING WITH CONSTRUCTION.

B.M. 27-030  
 ELEV. 230.897m  
 859637 - S.W. Cor. Roch St. and Harbison Ave., TbtL on top of 0.35m dia. x 2.4m iron pipe, 2.1m E. of W.L. of Roch St. & on S.L. of Harbison Ave.

| NO. | REVISIONS         | DATE     | BY  |
|-----|-------------------|----------|-----|
| 0   | ISSUED FOR TENDER | 19/03/29 | GSK |
| A   | ISSUED FOR REVIEW | 19/03/15 | GSK |



|             |            |             |     |
|-------------|------------|-------------|-----|
| DESIGNED BY | JP         | CHECKED BY  | GSK |
| DRAWN BY    | JP         | APPROVED BY |     |
| SCALE:      |            |             |     |
| HORIZONTAL  | 1:250      |             |     |
| VERTICAL    | 1:50       |             |     |
| DATE        | 2019/03/15 | DATE        |     |

ENGINEER'S SEAL  
  
 CONSULTANT DRAWING NUMBER  
**C-0009**

**THE CITY OF WINNIPEG**  
 WATER AND WASTE DEPARTMENT  
 ENGINEERING DIVISION  
 2019 WATER MAIN RENEWALS  
 CONTRACT 7  
 ROCH STREET  
 63m S OF JAMISON AVENUE TO  
 JAMISON AVENUE

SHEET 11 OF 19  
 CITY DRAWING NUMBER  
**D-15417**