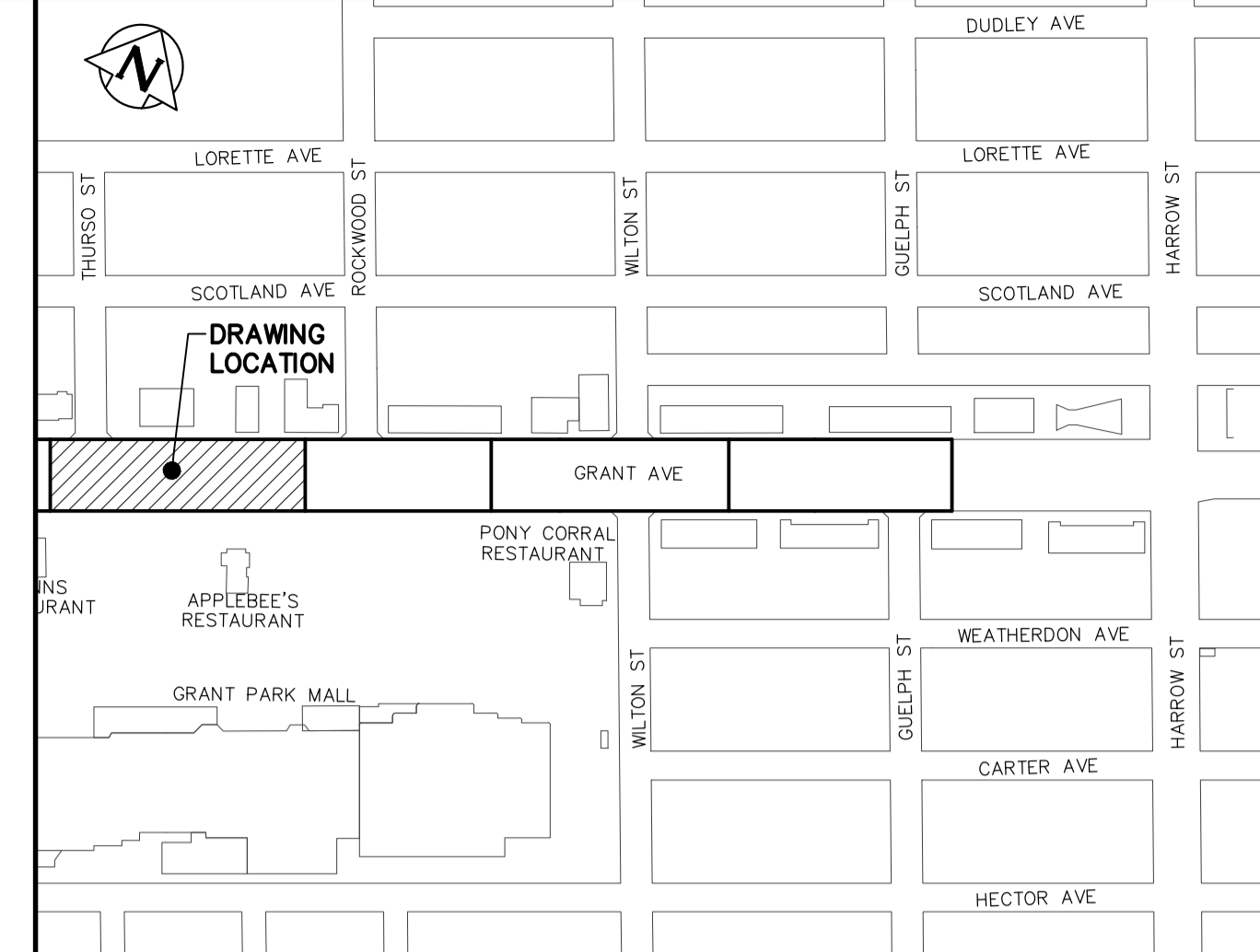
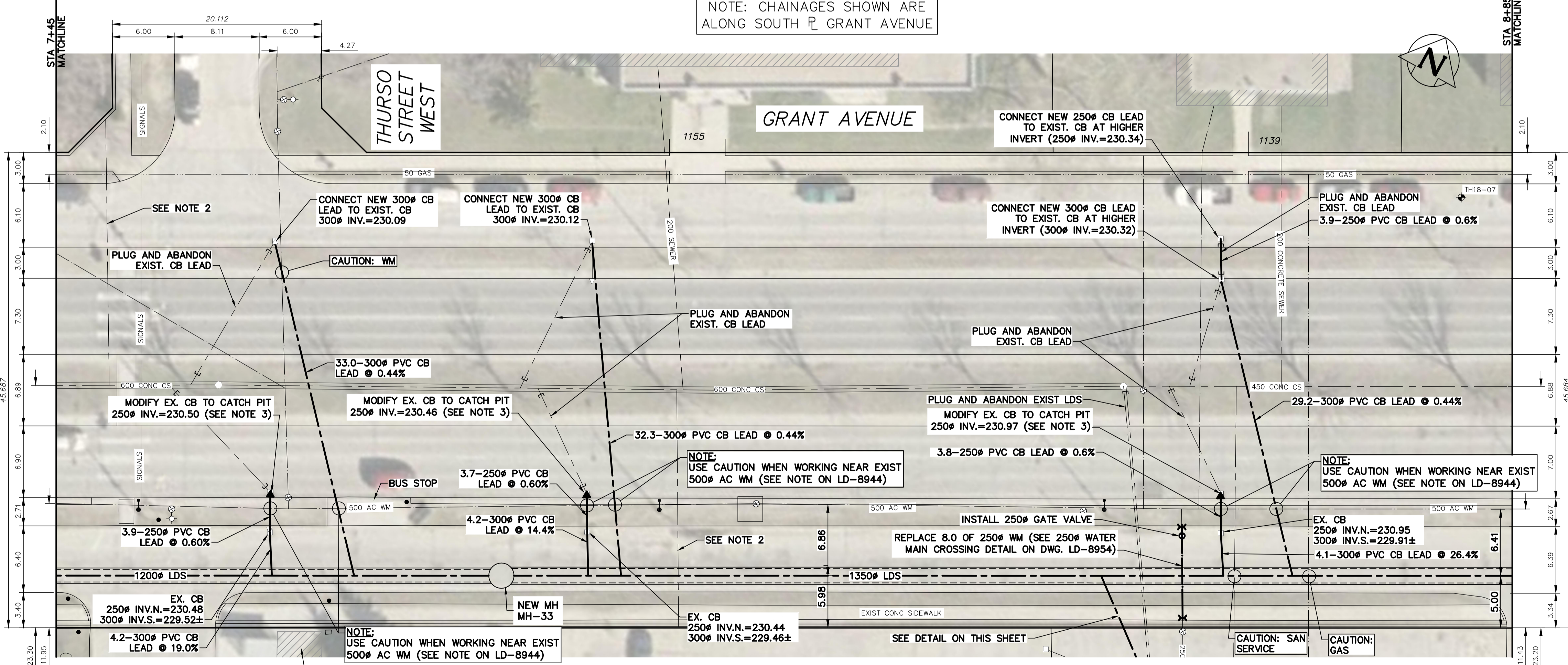
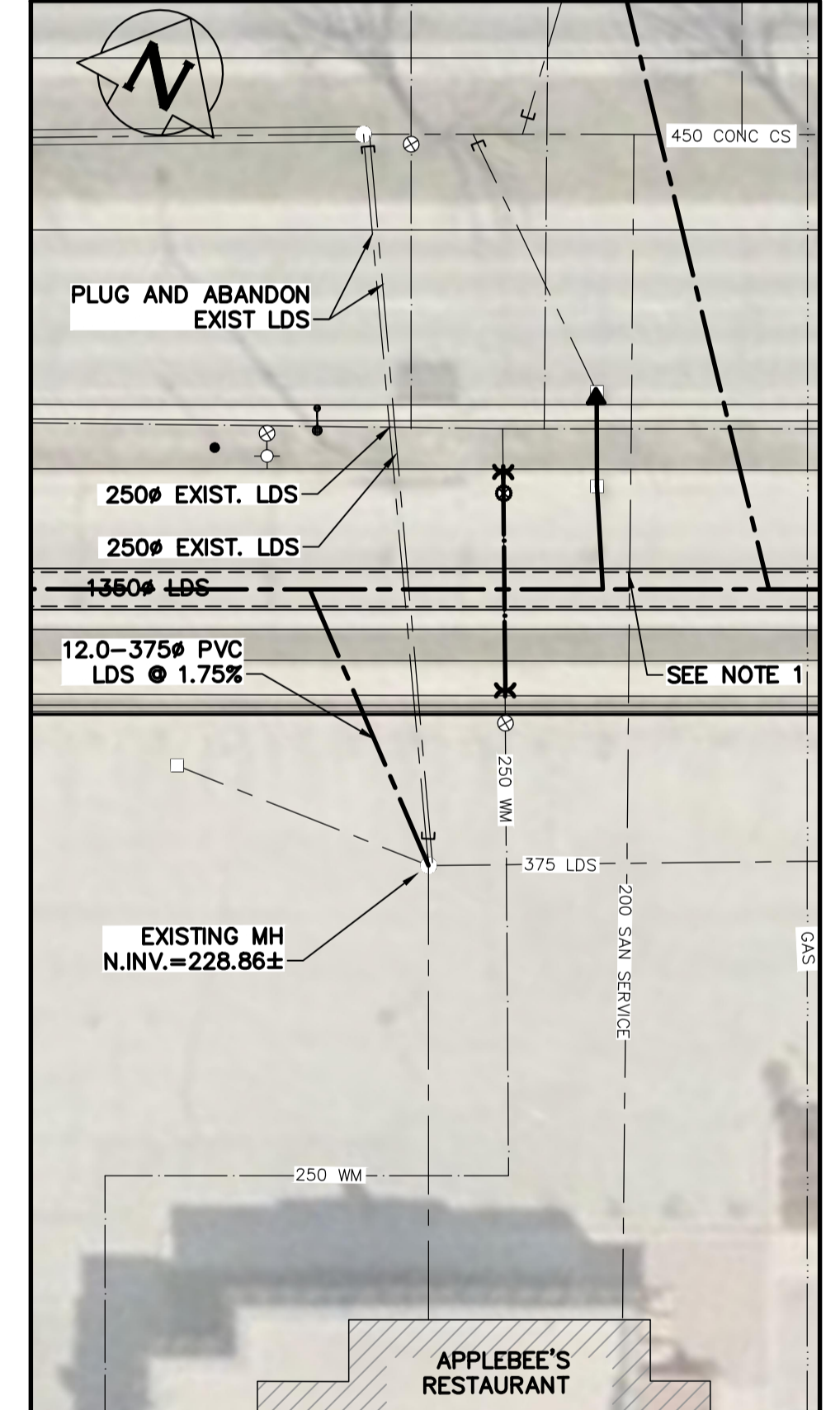


NOTE: CHAINAGES SHOWN ARE ALONG SOUTH GRANT AVENUE



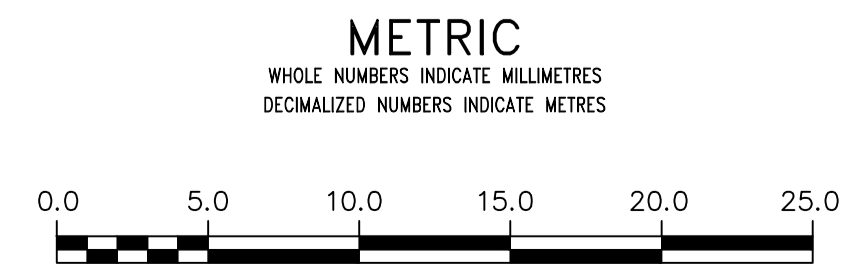
KEY PLAN (EAST)  
SCALE: N.T.S.

- NOTES:
- SOFT DIG TO CONFIRM THE DEPTH OF EXISTING 200 $\phi$  SANITARY SERVICE COMING FROM APPLEBEE'S RESTAURANT WHICH TIES INTO EXISTING COMBINED SEWER ON GRANT AVE. REGRADE EXIST. SAN SERVICE IF IN CONFLICT WITH THE NEW LDS.
  - ABANDONED OR POSSIBLE SEWER CONNECTION NOT DOCUMENTED IN THE CITY OF WINNIPEG RECORDS. THE CITY'S CCTV INSPECTION REPORT OF THE COMBINED SEWER SHOWS A PRESENCE OF A JUNCTION.
  - TO MODIFY EXISTING CATCH BASIN TO CATCH PIT POUR LOW DENSITY CONCRETE (FLOWABLE FILL) TO THE NEW INVERT ELEVATION AND RECONNECT IT TO THE NEW CATCH BASIN.



375 $\phi$  RECONNECTION TO NEW LDS  
SCALE: 1:250

**ENGINEERS GEOSCIENTISTS MANITOBA**  
Certificate of Authorization  
KGS Group  
No. 245



**WARNING**  
IF POWER EQUIPMENT OR EXPLOSIVES ARE TO BE USED FOR EXCAVATION ON THIS PROJECT THE CONTRACTOR MUST:  
1) NOTIFY THE GAS COMPANY OF THE PROPOSED LOCATION OF EXCAVATION.  
2) TAKE PRECAUTION TO AVOID DAMAGE TO GAS COMPANY INSTALLATIONS.  
SEE PROVINCIAL REGULATION 210/72 FOR DETAILS

**LOCATION APPROVED UNDERGROUND STRUCTURES**  
SUPV. U/G STRUCTURES COMMITTEE DATE  
NOTE:  
LOCATION OF UNDERGROUND STRUCTURES AS SHOWN ARE BASED ON THE BEST INFORMATION AVAILABLE BUT NO GUARANTEE IS GIVEN THAT ALL EXISTING UTILITIES ARE SHOWN OR THAT THE GIVEN LOCATIONS ARE EXACT. CONFIRMATION OF EXISTENCE AND EXACT LOCATION OF ALL SERVICES MUST BE OBTAINED FROM THE INDIVIDUAL UTILITIES BEFORE PROCEEDING WITH CONSTRUCTION.

B.M. ELEV.	NO.	ISSUED FOR CONSTRUCTION	DATE	BY
	0	ISSUED FOR CONSTRUCTION	2019/04/17	
		REVISIONS	DATE	BY

**KGS GROUP CONSULTING ENGINEERS**

DESIGNED BY	MID	CHECKED BY	
DRAWN BY	GEL	APPROVED BY	
SCALE:		RELEASED FOR CONSTRUCTION	
HORIZONTAL	1:250		
VERTICAL	1:50		
DATE	2019 04 17	DATE	

ENGINEER'S SEAL  
CONSULTANT DRAWING NUMBER  
11-0107-18-C12\_LD-8950

**THE CITY OF WINNIPEG**  
WATER AND WASTE DEPARTMENT  
ENGINEERING DIVISION

COCKBURN & CALROSSIE SEWER RELIEF WORKS  
CONTRACT 12  
**GRANT AVENUE**  
CAMBRIDGE STREET TO GUELPH STREET  
STA 7+45 TO STA 8+85

SHEET 8 OF 12  
CITY DRAWING NUMBER  
LD-8950