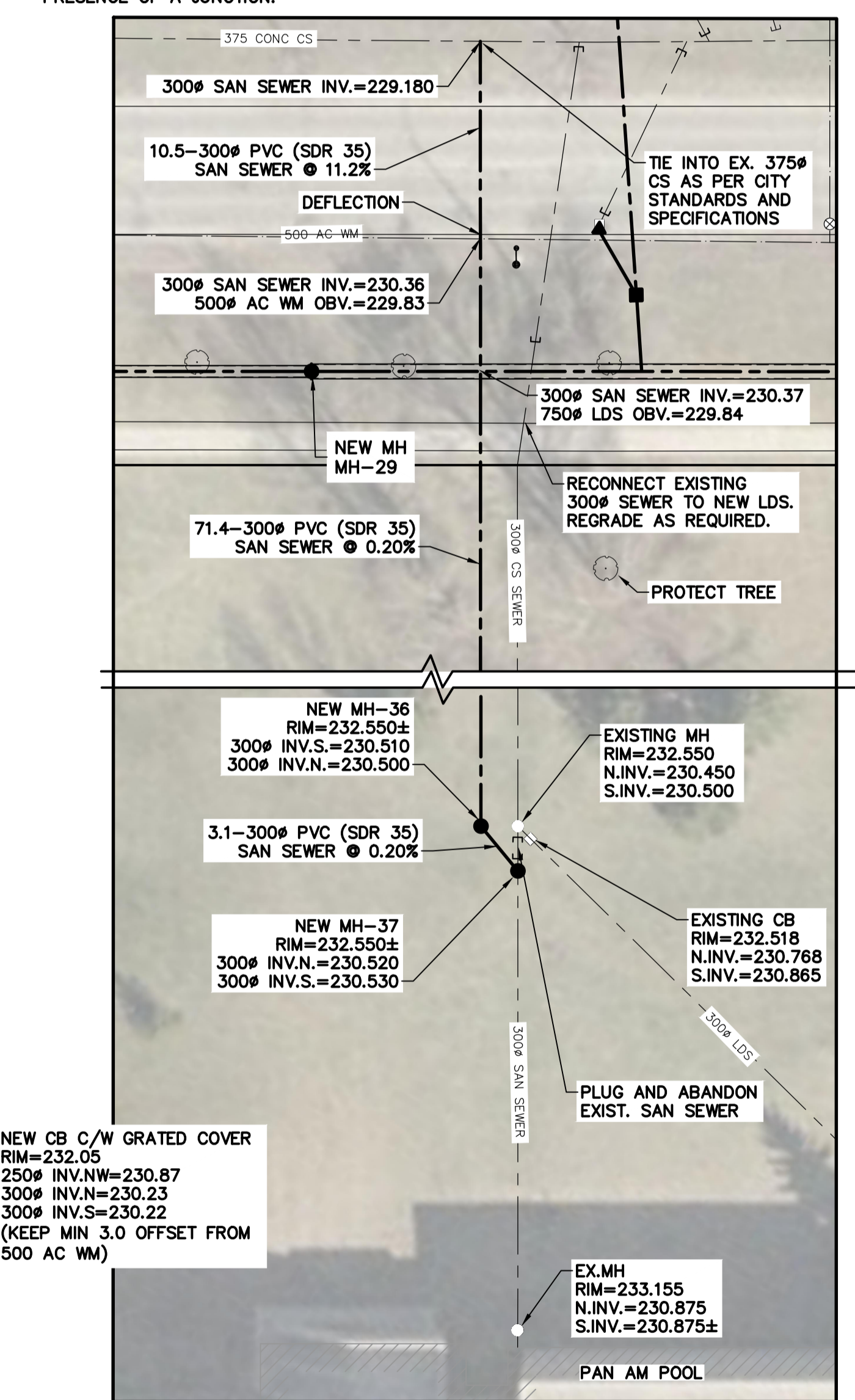
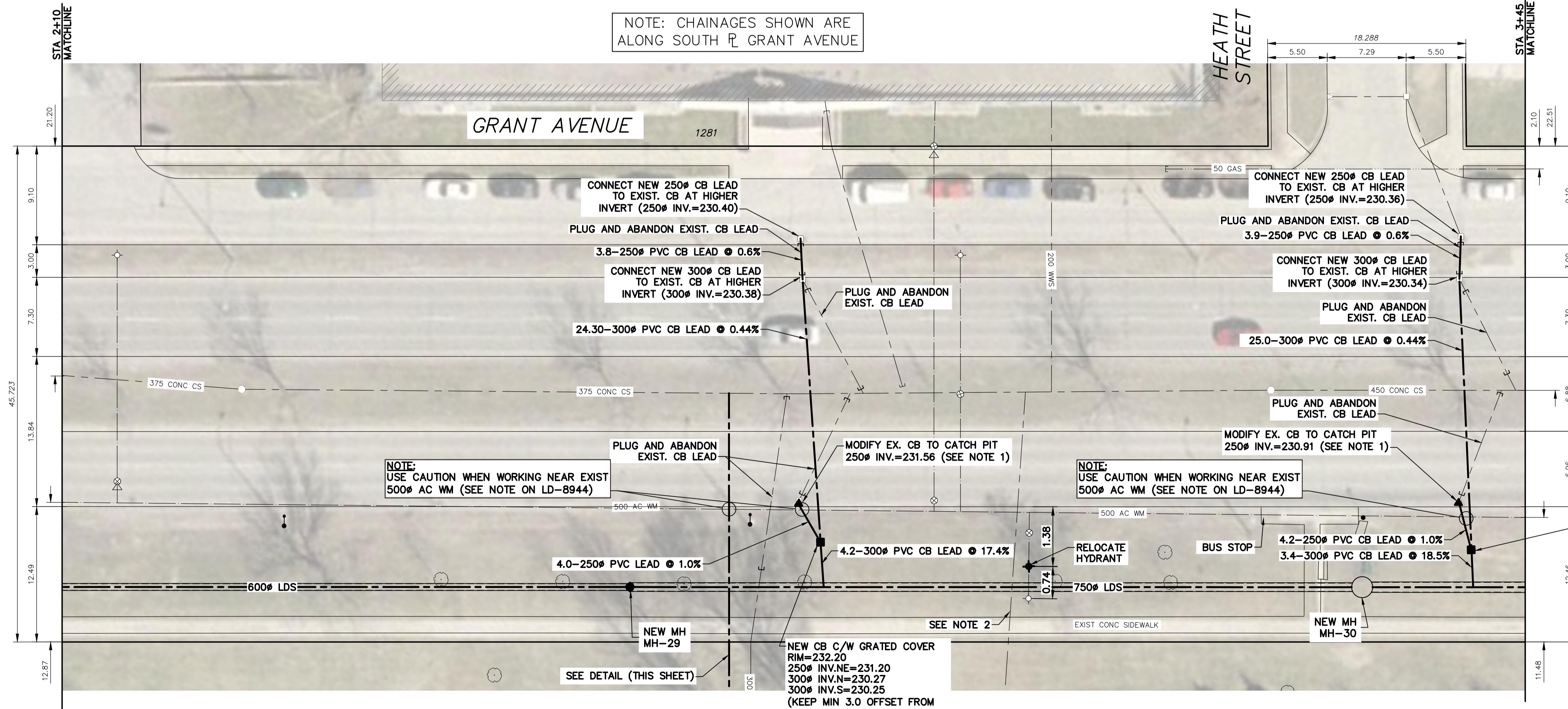


KEY PLAN (WEST)
SCALE: N.T.S.

NOTES:

- TO MODIFY EXISTING CATCH BASIN TO CATCH PIT POUR LOW DENSITY CONCRETE (FLOWABLE FILL) TO THE NEW INVERT ELEVATION AND RECONNECT IT TO THE NEW CATCH BASIN.
- ABANDONED OR POSSIBLE SEWER CONNECTION NOT DOCUMENTED IN THE CITY OF WINNIPEG RECORDS. THE CITY'S CCTV INSPECTION REPORT OF THE COMBINED SEWER SHOWS A PRESENCE OF A JUNCTION.



NEW SANITARY SEWER FOR PAN AM POOL
SCALE: 1:250

ENGINEERS GEOSCIENTISTS MANITOBA
Certificate of Authorization
KGS Group
No. 245

METRIC
WHOLE NUMBERS INDICATE MILLIMETRES
DECIMALIZED NUMBERS INDICATE METRES

WARNING

IF POWER EQUIPMENT OR EXPLOSIVES ARE TO BE USED FOR EXCAVATION ON THIS PROJECT THE CONTRACTOR MUST:

- NOTIFY THE GAS COMPANY OF THE PROPOSED LOCATION OF EXCAVATION.
- TAKE PRECAUTION TO AVOID DAMAGE TO GAS COMPANY INSTALLATIONS.

SEE PROVINCIAL REGULATION 210/72 FOR DETAILS

LOCATION APPROVED UNDERGROUND STRUCTURES

SUPV. U/G STRUCTURES COMMITTEE DATE

NOTE:
LOCATION OF UNDERGROUND STRUCTURES AS SHOWN ARE BASED ON THE BEST INFORMATION AVAILABLE BUT NO GUARANTEE IS GIVEN THAT ALL EXISTING UTILITIES ARE SHOWN OR THAT THE GIVEN LOCATIONS ARE EXACT. CONFIRMATION OF EXISTENCE AND EXACT LOCATION OF ALL SERVICES MUST BE OBTAINED FROM THE INDIVIDUAL UTILITIES BEFORE PROCEEDING WITH CONSTRUCTION.

B.M. ELEV.	NO.	ISSUED FOR CONSTRUCTION	DATE	BY
	0	ISSUED FOR CONSTRUCTION	2019/04/17	
		REVISIONS	DATE	BY

KGS GROUP CONSULTING ENGINEERS

DESIGNED BY: MID
DRAWN BY: GEL
SCALE: HORIZONTAL 1:250, VERTICAL 1:50
DATE: 2019 04 17

CHECKED BY:
APPROVED BY:
RELEASED FOR CONSTRUCTION DATE:

ENGINEER'S SEAL

CONSULTANT DRAWING NUMBER: 11-0107-18-C12_LD-8946

THE CITY OF WINNIPEG
WATER AND WASTE DEPARTMENT
ENGINEERING DIVISION

COCKBURN & CALROSSIE SEWER RELIEF WORKS
CONTRACT 12
GRANT AVENUE
CAMBRIDGE STREET TO GUELPH STREET
STA 2+10 TO STA 3+45

SHEET 4 OF 12
CITY DRAWING NUMBER: LD-8946