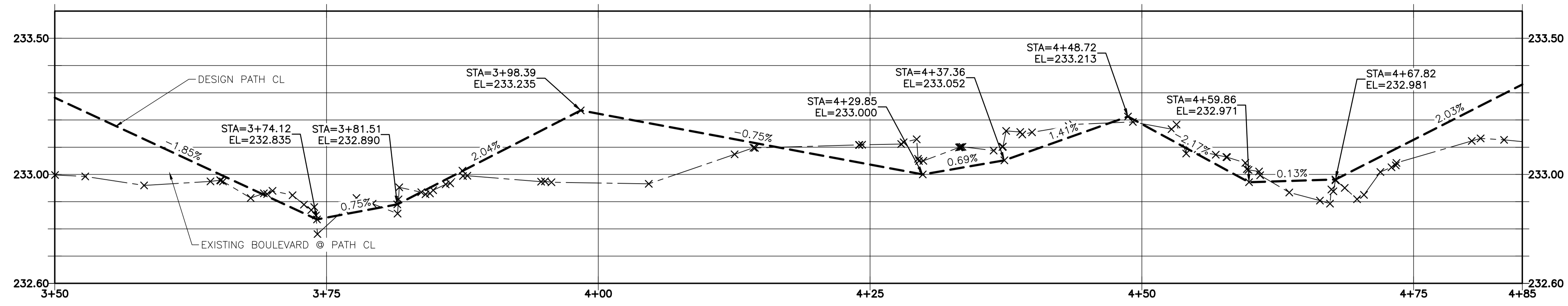
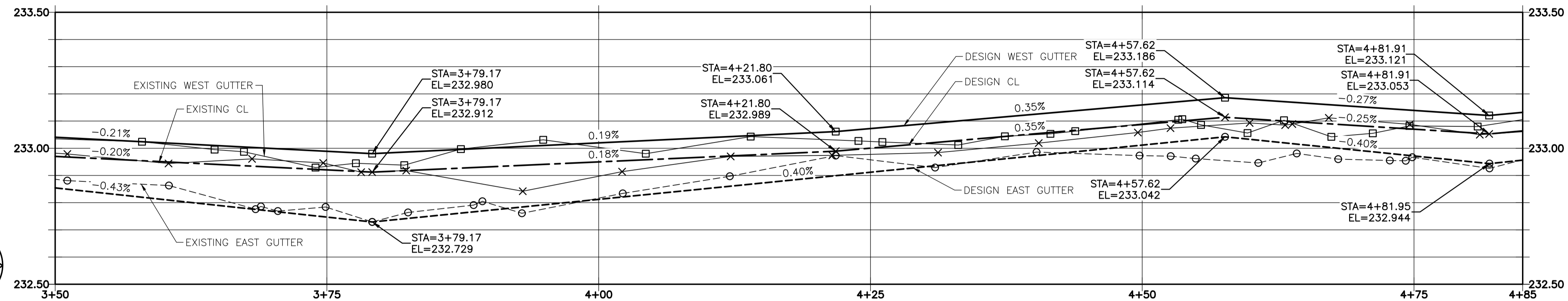


**NOTES:**

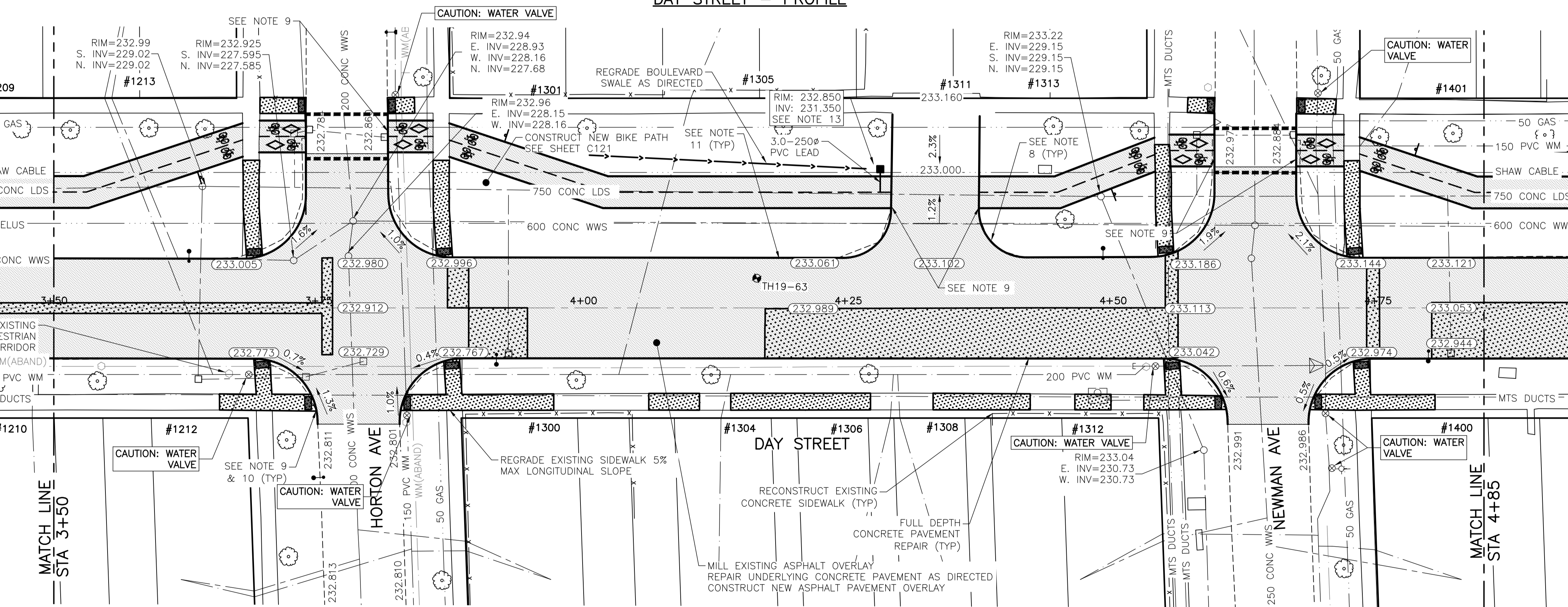
1. STATION IN CENTRE OF RIGHT-OF-WAY UNLESS OTHERWISE NOTED.
2. SOUTH PROPERTY LINE OF KILDARE AVENUE IS STA 1+00
3. ALL MEASUREMENTS TO BACK OF CURB.
4. ALL EXISTING TREES TO BE PROTECTED AND MAINTAINED THROUGHOUT CONSTRUCTION UNLESS NOTED OTHERWISE.
5. HAND OR SOFT DIG METHODS REQUIRED OVER GAS UTILITIES AT INTERVALS DETERMINED BY THE ENGINEER TO DETERMINE DEPTH OF COVER.
6. NO WORKS, INCLUDING CONCRETE CUTTING OR BREAKING, TO BE UNDERTAKEN NEAR GAS LINES UNTIL DEPTH OF COVER IS DETERMINED AND A MANITOBA HYDRO SAFETY WATCH REPRESENTATIVE IS ON SITE.
7. NO VIBRATORY COMPACTION PERMITTED WITHIN 1.0M OF GAS MAINS.
8. INSTALL MODIFIED BARRIER CURB AT ALL INTERSECTION RADI, ALLEY RADI, AND BULLNOSES.
9. CONSTRUCT NEW MONOLITHIC CURB RAMP (10mm HEIGHT INTEGRAL)
10. INSTALL DETECTABLE WARNING SURFACE TILE AT STREET INTERSECTIONS.
11. REMOVE EXISTING CURB AND CONSTRUCT NEW BARRIER CURB 150mm REVEAL, DOWELED.
12. INSTALL CATCH PIT AND BARRIER CURB AND GUTTER INLET FRAME (SD-023). INSTALL NEW 250 LEAD @ 2% MINIMUM GRADE
13. INSTALL NEW CATCH BASIN AND STANDARD FRAME (SD-024). INSTALL NEW 250 LEAD @ 2% MINIMUM GRADE
14. CONCRETE REPAIRS SHOWN BASED ON VISUAL INSPECTION PRIOR TO REMOVAL OF ASPHALT OVERLAY. FINAL REPAIR LIMITS AND DIMENSIONS MAY VARY FROM THOSE SHOWN.
15. ADJUST ALL WATER VALVES, WATER SERVICE VALVES, MANHOLES AND CATCH BASINS TO GRADE.



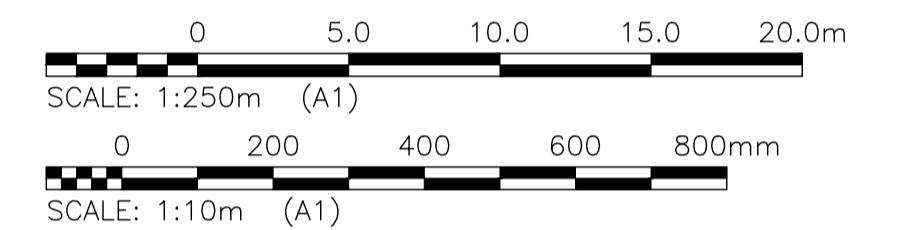
ACTIVE TRANSPORTATION PATH - PROFILE



DAY STREET - PROFILE



DAY STREET - PLAN



LOCATIONS OF UNDERGROUND STRUCTURES AS SHOWN ARE BASED ON THE BEST INFORMATION AVAILABLE. BUT NO GUARANTEE IS GIVEN THAT ALL EXISTING UTILITIES ARE SHOWN OR THAT THE GIVEN LOCATIONS ARE EXACT. CONFIRMATION OF THE EXISTENCE AND EXACT LOCATION OF ALL SERVICES MUST BE OBTAINED FROM INDIVIDUAL UTILITIES BEFORE PROCEEDING WITH CONSTRUCTION.

**PROPERTY LIMITS DELINEATION**  
DELINEATION OF PROPERTY LIMITS AS SHOWN ON THIS DWG DOES NOT REPRESENT A "LEGAL SURVEY". KGS GROUP MAKES NO REPRESENTATION OR WARRANTY AS TO THE ACCURACY OF PROPERTY LIMITS DELINEATED ON THIS DWG, NOR ON THE DIMENSIONAL ACCURACY OF DWG FEATURES RELATIVE TO THOSE PROPERTY LIMITS.

**WARNING**  
NOTIFY THE GAS COMPANY OF THE PROPOSED LOCATION OF EXCAVATION.  
TAKE PRECAUTION TO AVOID DAMAGE TO GAS COMPANY INSTALLATIONS.  
SEE PROVINCIAL REGULATION 210/72 FOR DETAILS.

**METRIC**  
WHOLE NUMBERS INDICATE MILLIMETRES  
DECIMALIZED NUMBERS INDICATE METRES

**PRELIMINARY**  
NOT TO BE USED FOR CONSTRUCTION

2019-05-01

U:\FMS\18-0107-016\18-0107-016\_35 DAY.DWG  
PLOT: 1:1 (A-1)

300 LDS	LAND DRAINAGE SEWER	300 LDS	TEST HOLE	⊙	⊙
250 WWS	WASTE WATER SEWER	250 WWS	GUY WIRE	—	—
---	GAS	---	LIGHT STANDARD	⊙	⊙
---	HYDRO	---	BACK OF CURB	---	---
---	M.T.S.	---	PARTIAL DEPTH REPAIR	⊗	⊗
150 WM	WATERMAIN	150 WM	CONCRETE	⊗	⊗
⊕	HYDRANT	⊕	ASPHALT	⊗	⊗
⊙	VALVE	⊙	SIDEWALK	⊗	⊗
⊙	MANHOLE	⊙	PROPERTY LINE	---	---
⊕	CATCH BASIN	⊕	SURVEY BAR	⊕	⊕
▽	CURB INLET	▽	GEODETIC BENCHMARK	⊕	⊕
•	POLES	•	ELEVATION	(32.231)	(32.231)
EXISTING	LEGEND-PLAN	PROPOSED	EXISTING	LEGEND-PLAN	PROPOSED
---	---	---	EXISTING	LEGEND-PROFILE	PROPOSED

**LOCATION APPROVED UNDERGROUND STRUCTURES**  
SUPV. U/G STRUCTURES COMMITTEE DATE  
NOTE:  
LOCATION OF UNDERGROUND STRUCTURES AS SHOWN ARE BASED ON THE BEST INFORMATION AVAILABLE BUT NO GUARANTEE IS GIVEN THAT ALL EXISTING UTILITIES ARE SHOWN OR THAT THE GIVEN LOCATIONS ARE EXACT. CONFIRMATION OF THE EXISTENCE AND EXACT LOCATION OF ALL SERVICES MUST BE OBTAINED FROM THE INDIVIDUAL UTILITIES BEFORE PROCEEDING WITH CONSTRUCTION.

B	ISSUED FOR TENDER	19/05/02	DATE	BY
A	ISSUED FOR REVIEW	19/03/05	DATE	BY
NO.	REVISIONS	DATE	BY	DATE

**KGS GROUP CONSULTING ENGINEERS**

DESIGNED BY: MH  
DRAWN BY: MH  
CHECKED BY:  
APPROVED BY:  
RELEASER FOR CONSTRUCTION:  
DATE: 2019/01/24

ENGINEER'S SEAL  
CONSULTANT DRAWING NO. **C118**

**THE CITY OF WINNIPEG PUBLIC WORKS DEPARTMENT ENGINEERING DIVISION**

PROJECT TITLE: **2019 LOCAL STREET PACKAGE DAY STREET**

SHEET 18 OF 21

COMPUTER FILE NAME: 18-0107-016\_35 DAY.DWG

CITY DRAWING NUMBER: -

**PLAN AND PROFILE 3+50 TO 4+85**