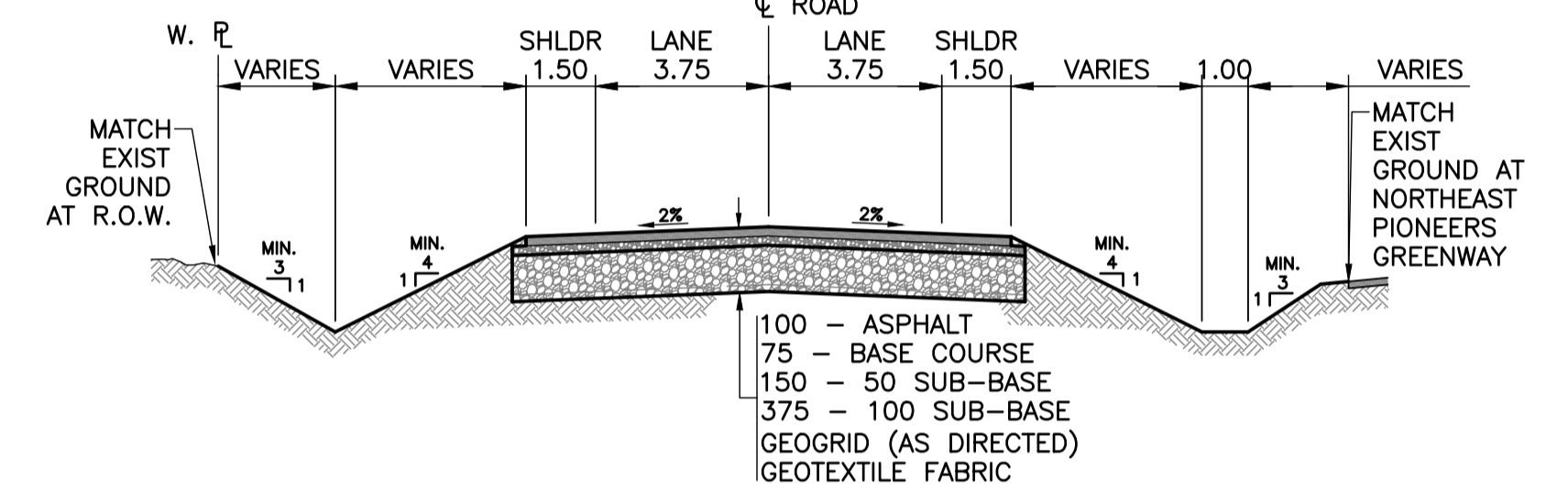


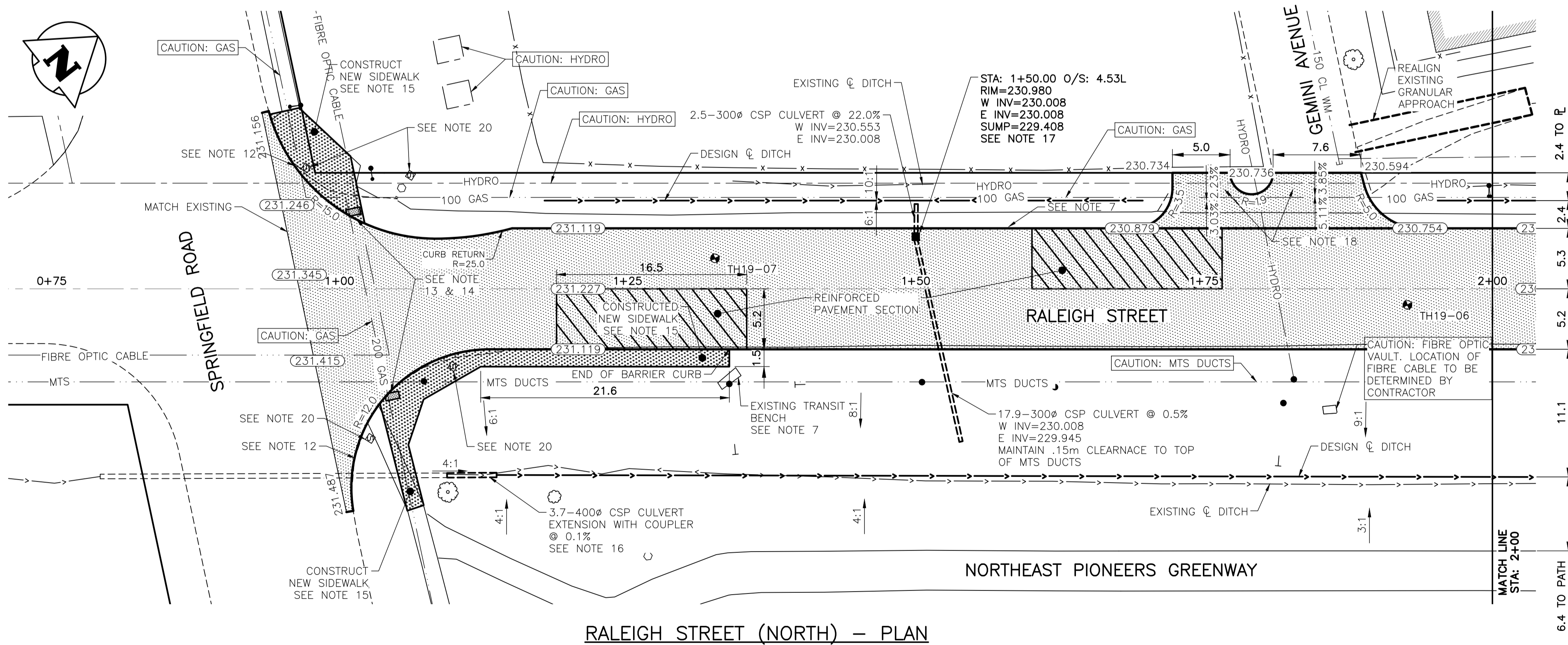
RALEIGH STREET (NORTH) - PROFILE

NOTES:

- ALL WORKS TO BE IN ACCORDANCE WITH THE LATEST REVISION OF THE CITY OF WINNIPEG STANDARD CONSTRUCTION SPECIFICATIONS.
- LEGAL PLAN AND UNDERGROUND INFORMATION BASED ON CITY OF WINNIPEG LBIS. CONTRACTOR TO VERIFY LOCATION OF ALL UNDERGROUND STRUCTURES ON SITE.
- STATION CHAINAGE IS BASED ON CENTRELINE OF PROPOSED ROADWAY.
- NORTH PROPERTY LINE OF SPRINGFIELD ROAD IS STA 1+00.
- ALL MEASUREMENTS TO EDGE OF PAVED SHOULDER.
- ALL EXISTING TREES TO BE PROTECTED AND MAINTAINED THROUGHOUT CONSTRUCTION UNLESS NOTED OTHERWISE.
- ALL BUS STOPS AND WINNIPEG TRANSIT PROPERTY WITHIN LIMITS OF CONSTRUCTION TO BE TEMPORARILY RELOCATED BY OTHERS DURING WORKS.
- HAND OR SOFT DIG METHODS REQUIRED OVER GAS UTILITIES AT INTERVALS DETERMINED BY THE CONTRACT ADMINISTRATOR TO DETERMINE DEPTH OF COVER.
- NO WORKS, INCLUDING CONCRETE CUTTING OR BREAKING, TO BE UNDERTAKEN NEAR GAS LINES UNTIL DEPTH OF COVER IS DETERMINED AND A MANITOBA HYDRO SAFETY WATCH REPRESENTATIVE IS ON SITE.
- ANY GAS MAINS OR SERVICES EXPOSED IN THE EXCAVATION AREA TO BE ROCK WRAPPED IN ACCORDANCE WITH MANITOBA HYDRO STANDARDS PRIOR TO WORK PROCEEDING ON SITE.
- NO VIBRATORY COMPACTION PERMITTED WITHIN 1.0 OF GAS MAINS.
- INSTALL NEW BARRIER CURB AND GUTTER AT ALL INTERSECTION RADI.
- CONSTRUCT NEW MONOLITHIC CURB RAMP (10mm HEIGHT INTEGRAL).
- INSTALL DETECTABLE WARNING SURFACE TILE.
- APPROACH GRADES SHOWN REPRESENT AVERAGE SLOPES. CROSSFALL ACROSS SIDEWALK TRAVEL PATH TO BE 4% OR LESS.
- INSTALL CULVERT EXTENSION COMPLETE WITH COUPLER AND REGRADE SIDE SLOPE. CONTRACTOR TO CONFIRM CULVERT DIAMETER AND LENGTH ON SITE.
- INSTALL NEW CATCHBASIN WITH SOLID COVER. SEAL OPENINGS AROUND ALL CONNECTIONS TO NEW CATCHBASIN WITH NON-SHRINKABLE GROUT.
- REMOVE EXISTING APPROACH AND CONSTRUCT NEW ASPHALT APPROACH. STRUCTURE AS PER TYPICAL CROSS-SECTION STRUCTURE.
- REMOVE EXISTING APPROACH AND CONSTRUCT NEW 200 CONTINUOUSLY REINFORCED CONCRETE APPROACH. REMOVE AND REPLACE EXISTING CONCRETE PAD FOR SOLID WASTE COLLECTION VEHICLES. STRUCTURE AS PER CONCRETE APPROACH STRUCTURE DETAIL.
- REMOVE ABANDONED LAMP STANDARD/SIGNALS BASES.
- INSTALL NEW CATCHBASIN WITH DITCH INLET GRATE AND GROUTED RIPRAP (SEE DETAILS ON SHEET 11).



TYPICAL CROSS-SECTION



RALEIGH STREET (NORTH) - PLAN

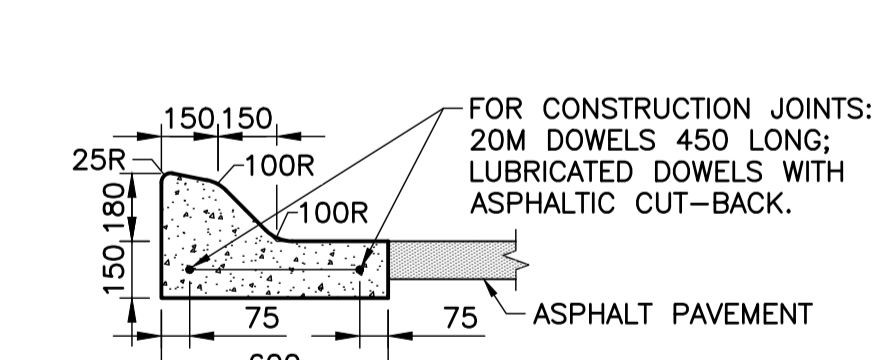
LOCATIONS OF UNDERGROUND STRUCTURES AS SHOWN ARE BASED ON THE BEST INFORMATION AVAILABLE. BUT NO GUARANTEE IS GIVEN THAT ALL EXISTING UTILITIES ARE SHOWN OR THAT THE GIVEN LOCATIONS ARE EXACT. CONFIRMATION OF THE EXISTENCE AND EXACT LOCATION OF ALL SERVICES MUST BE OBTAINED FROM INDIVIDUAL UTILITIES BEFORE PROCEEDING WITH CONSTRUCTION.

PROPERTY LIMITS DELINEATION
DELINEATION OF PROPERTY LIMITS AS SHOWN ON THIS DWG DOES NOT REPRESENT A "LEGAL SURVEY". KGS GROUP MAKES NO REPRESENTATION OR WARRANTY AS TO THE ACCURACY OF PROPERTY LIMITS DELINEATED ON THIS DWG, NOR ON THE DIMENSIONAL ACCURACY OF DWG FEATURES RELATIVE TO THOSE PROPERTY LIMITS.

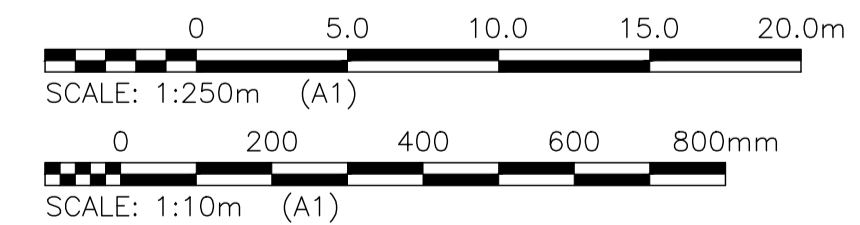
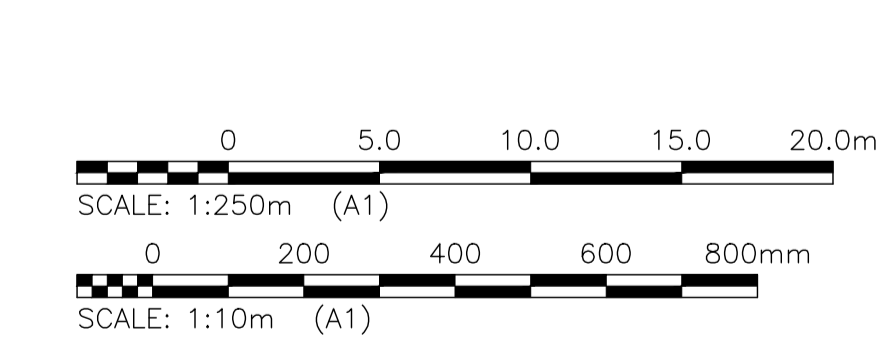
WARNING
NOTIFY THE GAS COMPANY OF THE PROPOSED LOCATION OF EXCAVATION. TAKE PRECAUTION TO AVOID DAMAGE TO GAS COMPANY INSTALLATIONS. SEE PROVINCIAL REGULATION 210/72 FOR DETAILS.

METRIC
WHOLE NUMBERS INDICATE MILLIMETRES
DECIMALIZED NUMBERS INDICATE METRES

REINFORCED PAVEMENT SECTION



MODIFIED CURB AND GUTTER



PRELIMINARY
NOT TO BE USED FOR CONSTRUCTION

300 LBS	LAND DRAINAGE SEWER	300 LBS	TEST HOLE			
250 WWS	WASTE WATER SEWER	250 WWS	GUY WIRE			
	GAS		LIGHT STANDARD	X-X	Q PROFILE	X-X
	HYDRO		BACK OF CURB	□-□	NORTH & WEST GUTTER	□-□
	M.T.S.		CONCRETE	○-○	SOUTH & EAST GUTTER	○-○
150 WM	WATERMAIN	150 WM	ASPHALT	△-△	NORTH & WEST DITCH	△-△
⊕	HYDRANT	⊕	SIDEWALK	◇-◇	SOUTH & EAST DITCH	◇-◇
⊙	VALVE	⊙	PROPERTY LINE	○-○	N/W LANE R	○-○
○	MANHOLE	○	SURVEY BAR	⊕	S/E MEDIAN R	⊕
□	CATCH BASIN	□	GEODETIC BENCHMARK	⊙	PARKING/DRIVEWAY	⊙
▽	CURB INLET	▽	ELEVATION	231.334	WINDOW/DOOR SILL	232.231
•	POLES	•				
EXISTING	LEGEND-PLAN	PROPOSED	EXISTING	LEGEND-PLAN	PROPOSED	EXISTING
				LEGEND-PROFILE	PROPOSED	

LOCATION APPROVED UNDERGROUND STRUCTURES
SUPV. U/G STRUCTURES COMMITTEE DATE
NOTE:
LOCATION OF UNDERGROUND STRUCTURES AS SHOWN ARE BASED ON THE BEST INFORMATION AVAILABLE BUT NO GUARANTEE IS GIVEN THAT ALL EXISTING UTILITIES ARE SHOWN OR THAT THE GIVEN LOCATIONS ARE EXACT. CONFIRMATION OF THE EXISTENCE AND EXACT LOCATION OF ALL SERVICES MUST BE OBTAINED FROM THE INDIVIDUAL UTILITIES BEFORE PROCEEDING WITH CONSTRUCTION.

B.I.M. KGS_BASE ELEV. 249.213	COORDINATE SYSTEM: CGVD28
DESIGNED BY: EW	CHECKED BY:
DRAWN BY: EW	APPROVED BY:
B ISSUED FOR TENDER 19/05/08	HOR. SCALE: 1:250
A ISSUED FOR REVIEW 19/03/22 JB	VERTICAL: 1:10
NO. REVISIONS	DATE BY
	2019/01/24

KGS GROUP CONSULTING ENGINEERS

ENGINEER'S SEAL

PROJECT TITLE
2019 LOCAL STREET PACKAGE
RALEIGH STREET (NORTH)

DESIGNED BY: EW
DRAWN BY: EW
HOR. SCALE: 1:250
VERTICAL: 1:10
RELEASED FOR CONSTRUCTION: 2019/01/24

CONSULTANT DRAWING NO.
C108

THE CITY OF WINNIPEG PUBLIC WORKS DEPARTMENT ENGINEERING DIVISION

SHEET 9 OF 17

COMPUTER FILE NAME: 18-0107-016_34_RALEIGH_NORTH.DWG

CITY DRAWING NUMBER: -

PLAN AND PROFILE 00+95 TO 02+00