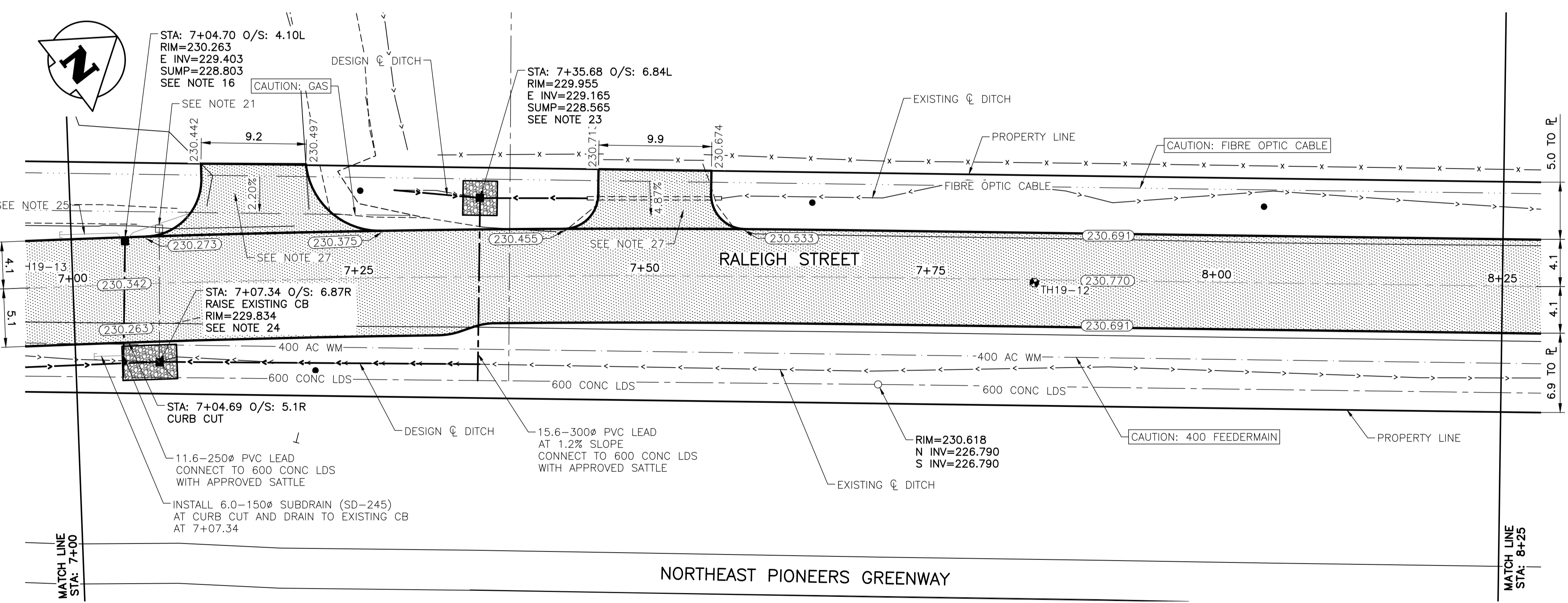


RALEIGH STREET (SOUTH) - PROFILE

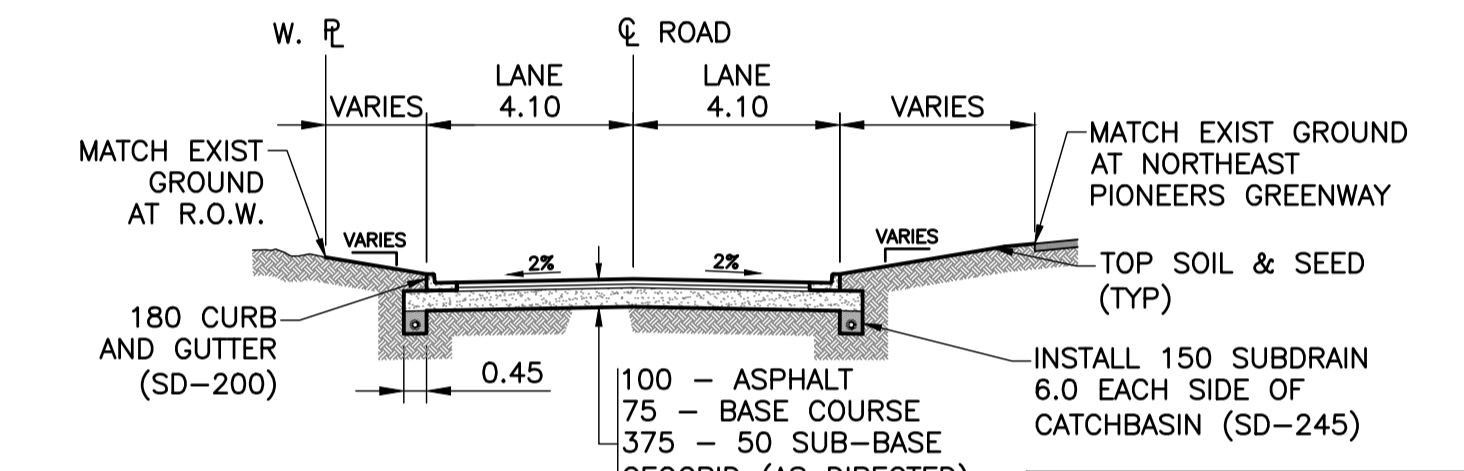


RALEIGH STREET (SOUTH) - PLAN

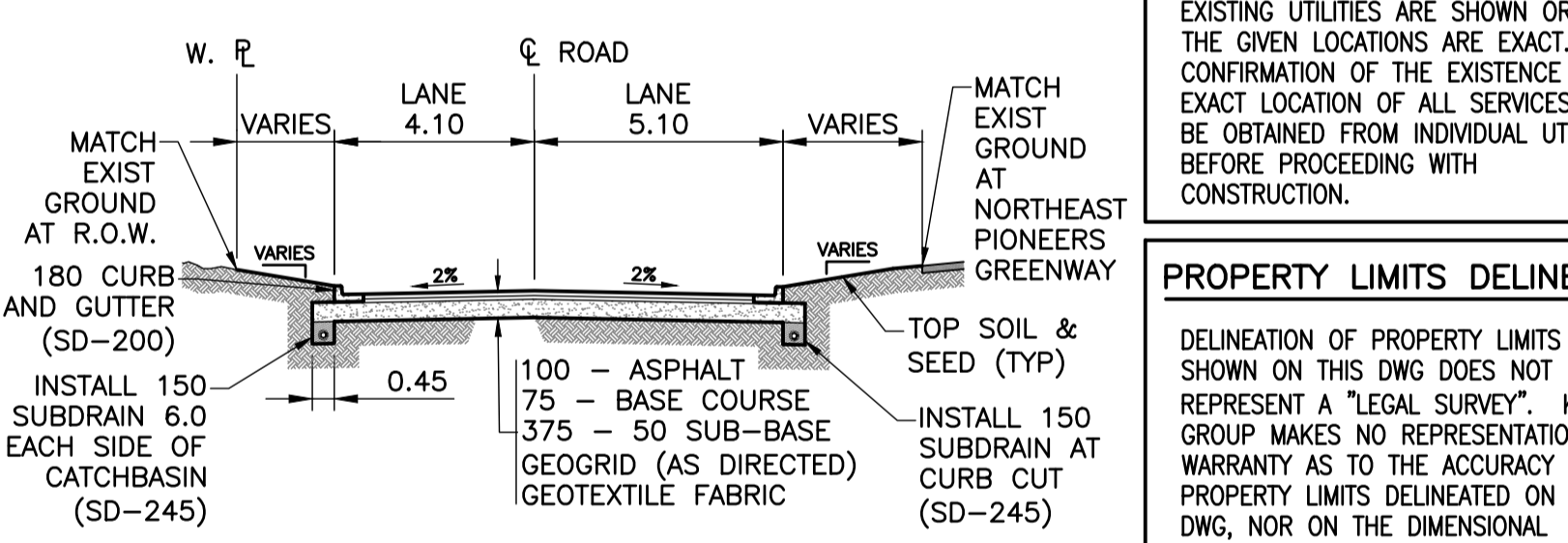


NOTES:

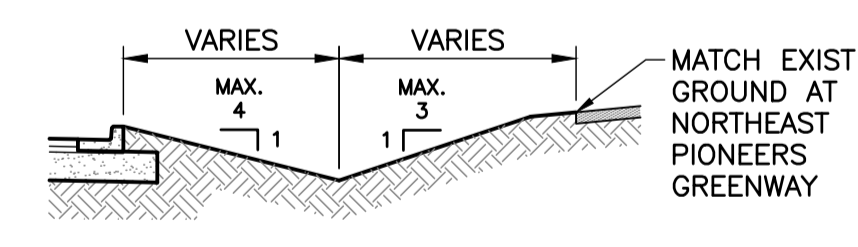
- ALL WORKS TO BE IN ACCORDANCE WITH THE LATEST REVISION OF THE CITY OF WINNIPEG STANDARD CONSTRUCTION SPECIFICATIONS.
- LEGAL PLAN AND UNDERGROUND INFORMATION BASED ON CITY OF WINNIPEG LBIS. CONTRACTOR TO VERIFY LOCATION OF ALL UNDERGROUND STRUCTURES ON SITE.
- STATION CHAINAGE IS BASED ON CENTRELINE OF PROPOSED ROADWAY.
- NORTH PROPERTY LINE OF CHALMERS AVENUE IS STA 1+00.
- ALL MEASUREMENTS TO BACK OF CURB
- ALL EXISTING TREES TO BE PROTECTED AND MAINTAINED THROUGHOUT CONSTRUCTION UNLESS NOTED OTHERWISE.
- ALL BUS STOPS AND WINNIPEG TRANSIT PROPERTY WITHIN LIMITS OF CONSTRUCTION TO BE TEMPORARILY RELOCATED BY OTHERS DURING WORKS.
- HAND OR SOFT DIG METHODS REQUIRED OVER GAS UTILITIES AT INTERVALS DETERMINED BY THE CONTRACT ADMINISTRATOR TO DETERMINE DEPTH OF COVER.
- NO WORKS, INCLUDING CONCRETE CUTTING OR BREAKING, TO BE UNDERTAKEN NEAR GAS LINES UNTIL DEPTH OF COVER IS DETERMINED AND A MANITOBA HYDRO SAFETY WATCH REPRESENTATIVE IS ON SITE.
- ANY GAS MAINS OR SERVICES EXPOSED IN THE EXCAVATION AREA TO BE ROCK WRAPPED IN ACCORDANCE WITH MANITOBA HYDRO STANDARDS PRIOR TO WORK PROCEEDING ON SITE.
- NO VIBRATORY COMPACTION PERMITTED WITHIN 1.0 OF GAS MAINS.
- INSTALL NEW MODIFIED BARRIER CURB AND GUTTER AT ALL INTERSECTION RADII.
- CONSTRUCT NEW MONOLITHIC CURB RAMP (10mm HEIGHT INTEGRAL).
- APPROACH GRADES SHOWN REPRESENT AVERAGE SLOPES. CROSSFALL ACROSS SIDEWALK TRAVEL PATH TO BE 4% OR LESS.
- INSTALL NEW CATCHBASIN (SD-024) COMPLETE WITH 250Ø PVC LEAD @ MINIMUM 2.0% SLOPE UNLESS NOTED OTHERWISE.
- REMOVE EXISTING APPROACH AND CONSTRUCT NEW 200 CONTINUOUSLY REINFORCED CONCRETE APPROACH.
- ADJUST WATER VALVES, HYDRANTS, MANHOLES AND CATCHBASINS TO FINISHED GRADE.
- REMOVE ABANDONED LAMP STANDARD/SIGNALS BASES.
- REMOVE AND REPLACE ASPHALT PATH TO LIMITS SHOWN.
- REMOVE EXISTING CATCHBASIN AND ABANDON LEAD.
- RE-GRADE APPROXIMATELY 3.0 OF EXISTING APPROACH AND RE-SURFACE WITH ASPHALTIC CONCRETE AS DIRECTED BY CONTRACT ADMINISTRATOR TO MATCH EXISTING GRADES.
- INSTALL NEW CATCHBASIN COMPLETE WITH WITH DITCH INLET GRATE AND GROUTED RIPRAP (SEE DETAILS ON SHEET 8).
- INSTALL NEW DITCH INLET GRATE AND GROUTED RIPRAP ON EXISTING CATCHBASIN (SEE DETAILS ON SHEET 8).
- INSTALL 6.0-150Ø SUBDRAIN (SD-245) ON BOTH SIDES OF ALL PROPOSED CATCHBASINS.
- REMOVE EXISTING APPROACH AND CONSTRUCT NEW ASPHALT APPROACH. STRUCTURE AS PER TYPICAL CROSS-SECTION STRUCTURE.
- ALL BOULEVARDS AND LANDSCAPE AREAS TO BE SEEDED. LIMITS TO BE IDENTIFIED IN THE FIELD BY CONTRACT ADMINISTRATOR.
- PROVIDE TEMPORARY SUPPORT FOR LAMP STANDARDS, HYDRO POLES AND ANCHORS AS REQUIRED.



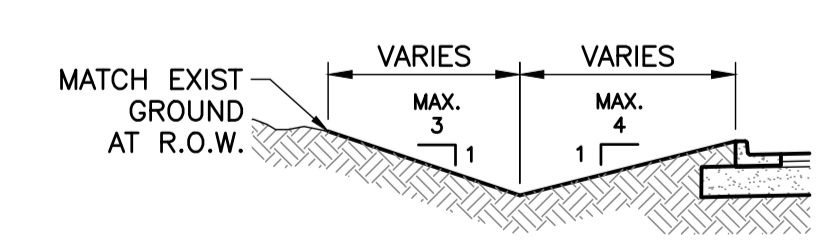
TYPICAL CROSS-SECTION



CROSS-SECTION STA 6+85.71 TO STA 7+36.88



TYPICAL WEST DITCH SECTION



TYPICAL EAST DITCH SECTION

LOCATIONS OF UNDERGROUND STRUCTURES AS SHOWN ARE BASED ON THE BEST INFORMATION AVAILABLE. BUT NO GUARANTEE IS GIVEN THAT ALL EXISTING UTILITIES ARE SHOWN OR THAT THE GIVEN LOCATIONS ARE EXACT. CONFIRMATION OF THE EXISTENCE AND EXACT LOCATION OF ALL UTILITIES MUST BE OBTAINED FROM INDIVIDUAL SERVICES BEFORE PROCEEDING WITH CONSTRUCTION.

**PROPERTY LIMITS DELINEATION**  
DELINEATION OF PROPERTY LIMITS AS SHOWN ON THIS DWG DOES NOT REPRESENT A "LEGAL SURVEY". KGS GROUP MAKES NO REPRESENTATION OR WARRANTY AS TO THE ACCURACY OF PROPERTY LIMITS DELINEATED ON THIS DWG, NOR ON THE DIMENSIONAL ACCURACY OF DWG FEATURES RELATIVE TO THOSE PROPERTY LIMITS.

**WARNING**  
NOTIFY THE GAS COMPANY OF THE PROPOSED LOCATION OF EXCAVATION. TAKE PRECAUTION TO AVOID DAMAGE TO GAS COMPANY INSTALLATIONS. SEE PROVINCIAL REGULATION 210/72 FOR DETAILS.

**METRIC**  
WHOLE NUMBERS INDICATE MILLIMETRES  
DECIMALIZED NUMBERS INDICATE METRES

**PRELIMINARY**  
NOT TO BE USED FOR CONSTRUCTION

EXISTING	LEGEND-PLAN	PROPOSED	EXISTING	LEGEND-PLAN	PROPOSED	EXISTING	LEGEND-PROFILE	PROPOSED
300_LDS	LAND DRAINAGE SEWER	300_LDS	•	TEST HOLE	•	---	Q PROFILE	---
250_WWS	WASTE WATER SEWER	250_WWS	•	GUY WIRE	•	---	NORTH & WEST GUTTER	---
---	GAS	---	•	LIGHT STANDARD	•	---	SOUTH & EAST GUTTER	---
---	HYDRO	---	•	BACK OF CURB	•	---	NORTH & WEST DITCH	---
---	M.T.S.	---	•	CONCRETE	•	---	SOUTH & EAST DITCH	---
150_WM	WATERMAIN	150_WM	•	ASPHALT	•	---	N/W LANE R	---
---	HYDRANT	---	•	PROPERTY LINE	•	---	S/E MEDIAN R	---
---	VALVE	---	•	SURVEY BAR	•	---	PARKING/DRIVEWAY	---
---	MANHOLE	---	•	GEODETIC BENCHMARK	•	---	WINDOW/DOOR SILL	---
---	CATCH BASIN	---	•	ELEVATION	•	---		
---	CURB INLET	---	•			---		
---	POLES	---	•			---		
---		---	•			---		

**LOCATION APPROVED UNDERGROUND STRUCTURES**  
SUPV. U/G STRUCTURES COMMITTEE DATE  
NOTE: LOCATION OF UNDERGROUND STRUCTURES AS SHOWN ARE BASED ON THE BEST INFORMATION AVAILABLE BUT NO GUARANTEE IS GIVEN THAT ALL EXISTING UTILITIES ARE SHOWN OR THAT THE GIVEN LOCATIONS ARE EXACT. CONFIRMATION OF EXISTENCE AND EXACT LOCATION OF ALL SERVICES MUST BE OBTAINED FROM THE INDIVIDUAL UTILITIES BEFORE PROCEEDING WITH CONSTRUCTION.

B.I.M.	KGS_BASE	COORDINATE SYSTEM:	CGVD28
	ELEV. 249.213		

DESIGNED BY	CHECKED BY	DATE	BY
EW			
EW			
B	ISSUED FOR TENDER	19/05/08	
A	ISSUED FOR REVIEW	19/03/22	JB
NO.	REVISIONS	DATE	BY

ENGINEER'S SEAL  
CONSULTANT DRAWING NO. C106

**THE CITY OF WINNIPEG**  
PUBLIC WORKS DEPARTMENT  
ENGINEERING DIVISION

PROJECT TITLE  
**2019 LOCAL STREET PACKAGE**  
**RALEIGH STREET (SOUTH)**

SHEET 7 OF 17  
COMPUTER FILE NAME  
18-0107-016\_34  
RALEIGH SOUTH.DWG  
CITY DRAWING NUMBER

PLAN AND PROFILE  
07+00 TO 08+25