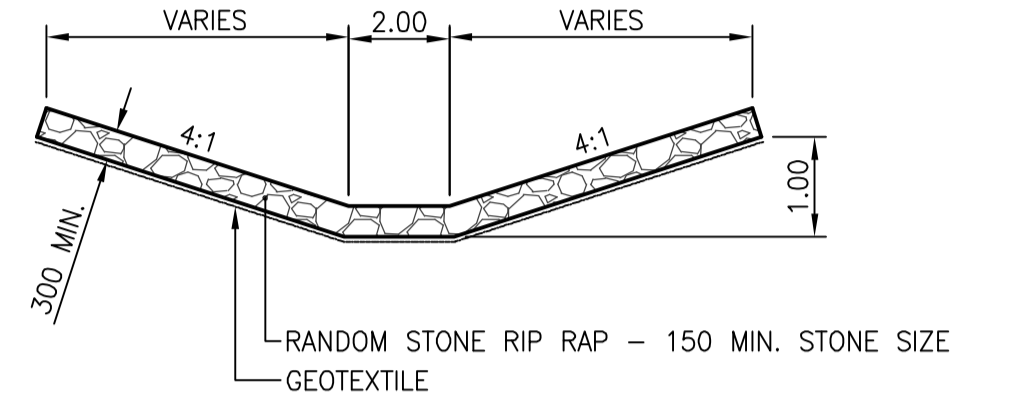
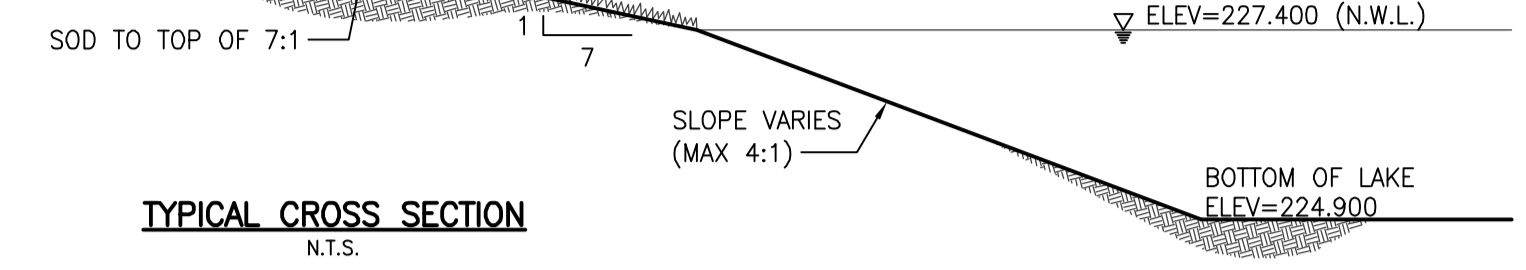
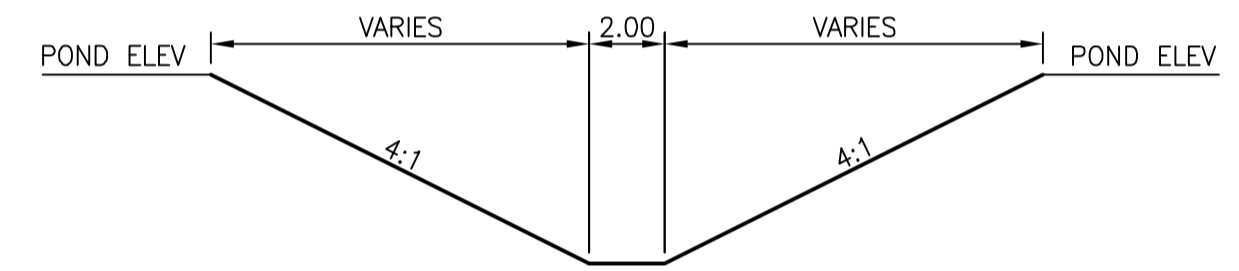


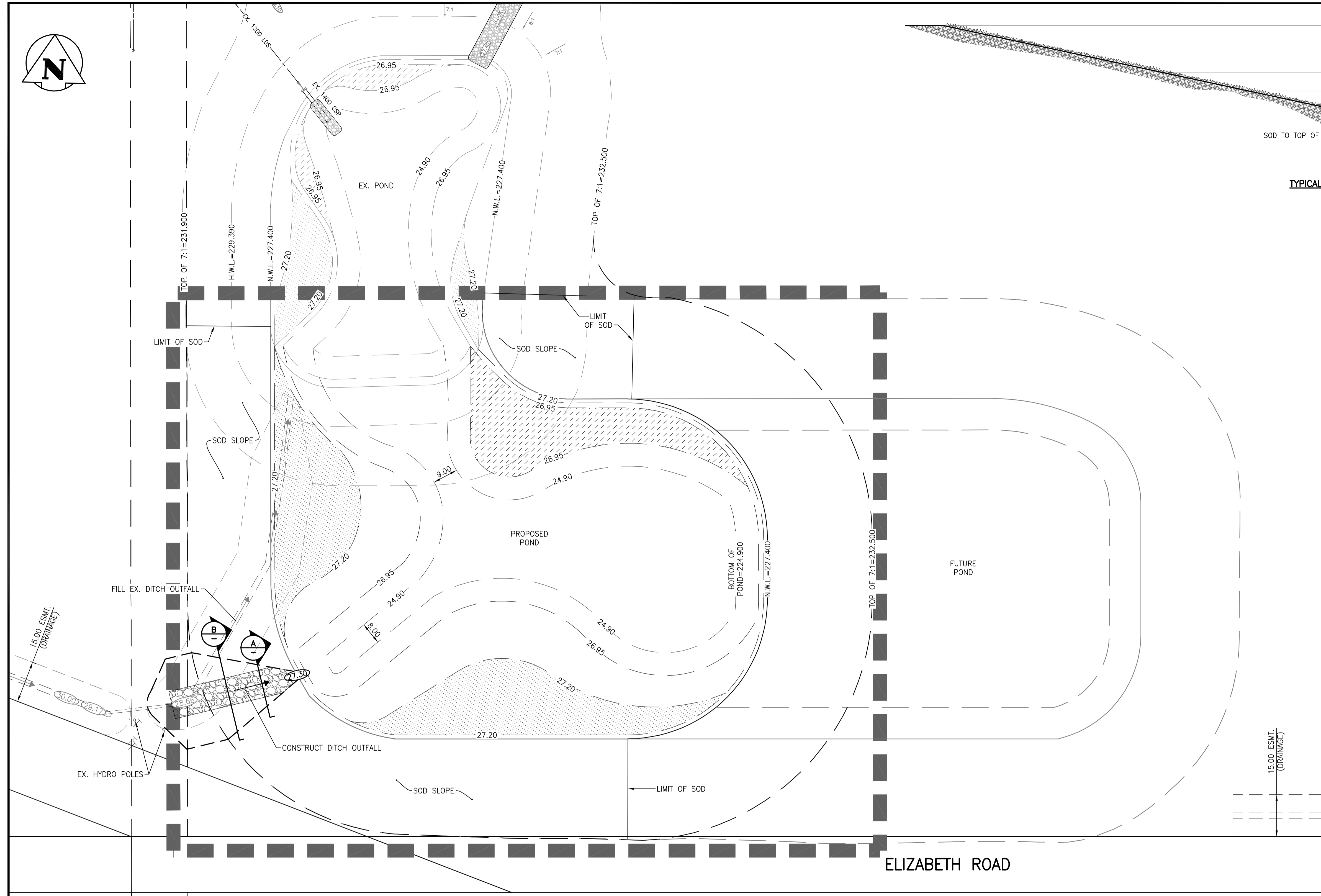
ELEV=232.500 (TOP OF 7:1)  
 ELEV=230.290 (FREEBOARD)  
 ELEV=229.390 (H.W.L.)  
 ELEV=227.400 (N.W.L.)  
 BOTTOM OF LAKE  
 ELEV=224.900



**A** RIP RAP SECTION  
 N.T.S.

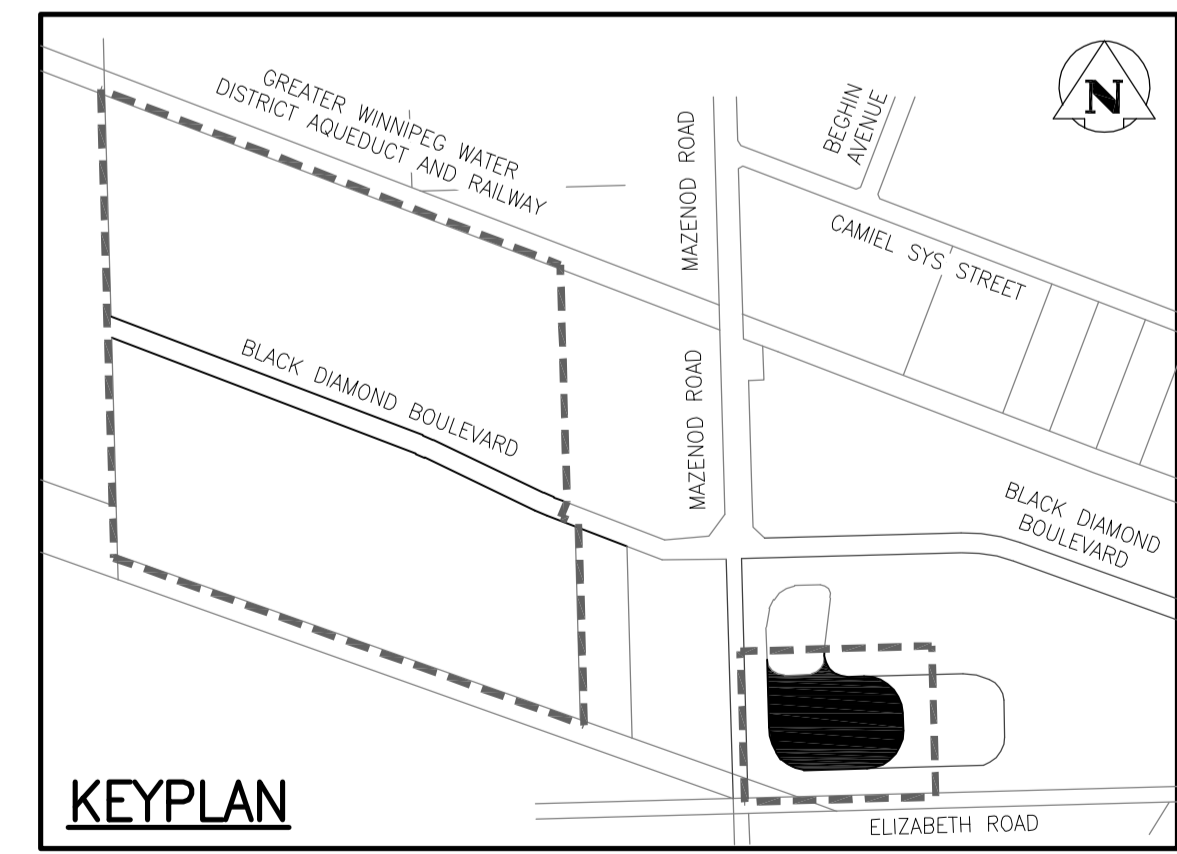


**B** DITCH OUTFALL SECTION  
 N.T.S.



15.00 ESMT.  
 (DRAINAGE)

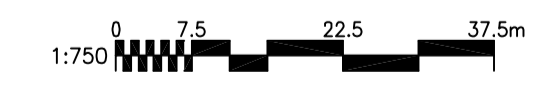
ELIZABETH ROAD



KEYPLAN

**ENGINEERS  
 GEOSCIENTISTS  
 MANITOBA**  
 Certificate of Authorization  
 Stantec Consulting Ltd.  
 No. 1301

BENCHMARK: N.W. Cor. of Mazend Rd. & G.W.W.D. R.O.W.,  
 19 mm dia. x 4.6 m I.B. in Valve Box, 3.0 m W. of W.L.  
 of Mazend Rd. & 4.0 m N. of N. rail of tracks in G.W.  
 W.D. R.O.W.



**WARNING**

IF POWER EQUIPMENT OR EXPLOSIVES ARE TO BE USED FOR EXCAVATION ON THIS PROJECT THE CONTRACTOR MUST:  
 1) NOTIFY THE GAS COMPANY OF THE PROPOSED LOCATION OF EXCAVATION.  
 2) TAKE PRECAUTION TO AVOID DAMAGE TO GAS COMPANY INSTALLATIONS.  
 SEE PROVINCIAL REGULATION 140/92 FOR DETAILS

**METRIC**

WHOLE NUMBERS INDICATE MILLIMETRES  
 DECIMALIZED NUMBERS INDICATE METRES

EXISTING	LEGEND-PLAN	PROPOSED	EXISTING	LEGEND-PLAN	PROPOSED
150 WM	WATERMAIN	150 WM	HYDRO	HYDRO	HYDRO
+	HYDRANT	+	M.T.S.	M.T.S.	M.T.S.
⊗	VALVE	⊗	CONCRETE	CONCRETE	CONCRETE
300 LDS	LAND DRAINAGE SEWER	300 LDS	ASPHALT	ASPHALT	ASPHALT
250 WWS	WASTE WATER SEWER	250 WWS	SIDEWALK	SIDEWALK	SIDEWALK
●	MANHOLE	●	PROPERTY LINE	PROPERTY LINE	PROPERTY LINE
■	CATCH BASIN	■	SURVEY BAR	SURVEY BAR	SURVEY BAR
▼	CURB INLET	▼			
+	JUNCTIONS	+			
—	CULVERT	—			
—	GAS	—			

**LOCATION APPROVED UNDERGROUND STRUCTURES**

SUPV. U/G STRUCTURES COMMITTEE DATE

NOTE:  
 LOCATION OF UNDERGROUND STRUCTURES AS SHOWN ARE BASED ON THE BEST INFORMATION AVAILABLE BUT NO GUARANTEE IS GIVEN THAT ALL EXISTING UTILITIES ARE SHOWN OR THAT THE GIVEN LOCATIONS ARE EXACT. CONFIRMATION OF EXISTENCE AND EXACT LOCATION OF ALL SERVICES MUST BE OBTAINED FROM THE INDIVIDUAL UTILITIES BEFORE PROCEEDING WITH CONSTRUCTION.

NO.	REVISIONS	DATE	BY
1	SUBMITTED FOR CITY REVIEW	19.02.21	P.J.S.

**Stantec**  
 500 - 311 Portage Avenue, Winnipeg M8 Canada R3B 2B9  
 Tel. 204.489.5900 Fax. 204.453.9012 www.stantec.com

DESIGNED BY: P.J.S. CHECKED BY: D.P.M.  
 DRAWN BY: L.D. APPROVED BY: P.J.S.

HOR. SCALE: 1:750  
 VERTICAL: \_\_\_\_\_

RELEASED FOR CONSTRUCTION: \_\_\_\_\_  
 DATE: 2018. 10. 15

**ENGINEER'S SEAL**  
 PROVINCE OF MANITOBA  
 REGISTERED PROFESSIONAL ENGINEER  
 P.J. SUNDERLAND  
 CONSULTANT DRAWING NO. C-501

**THE CITY OF WINNIPEG**  
 Winnipeg

ST. BONIFACE INDUSTRIAL PARK - PHASE 2 - STAGE 5  
**POND AND OUTFALL DETAILS**

SHEET 12 OF 12  
 CAD FILE DRAWING NUMBER 09351C-501\_PH2-5.DWG  
 CITY DRAWING NUMBER \_\_\_\_\_

VA:168044\A\168044\168044\0300\_dra\civil\phases\_2-stage\_5\09351c-501\_ph2-5.dwg  
 2019/02/25 9:44 AM By: Derek Labonde