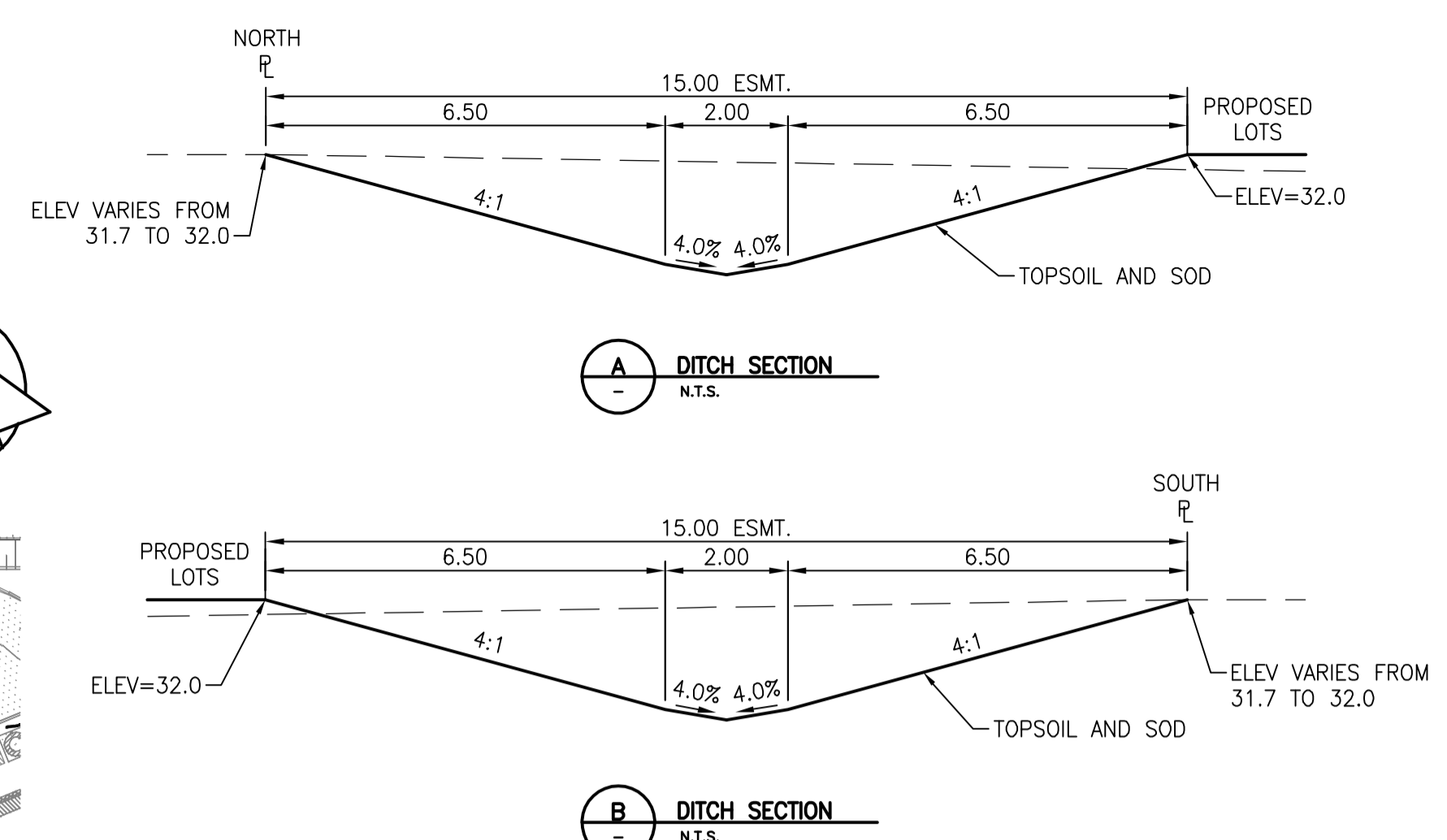
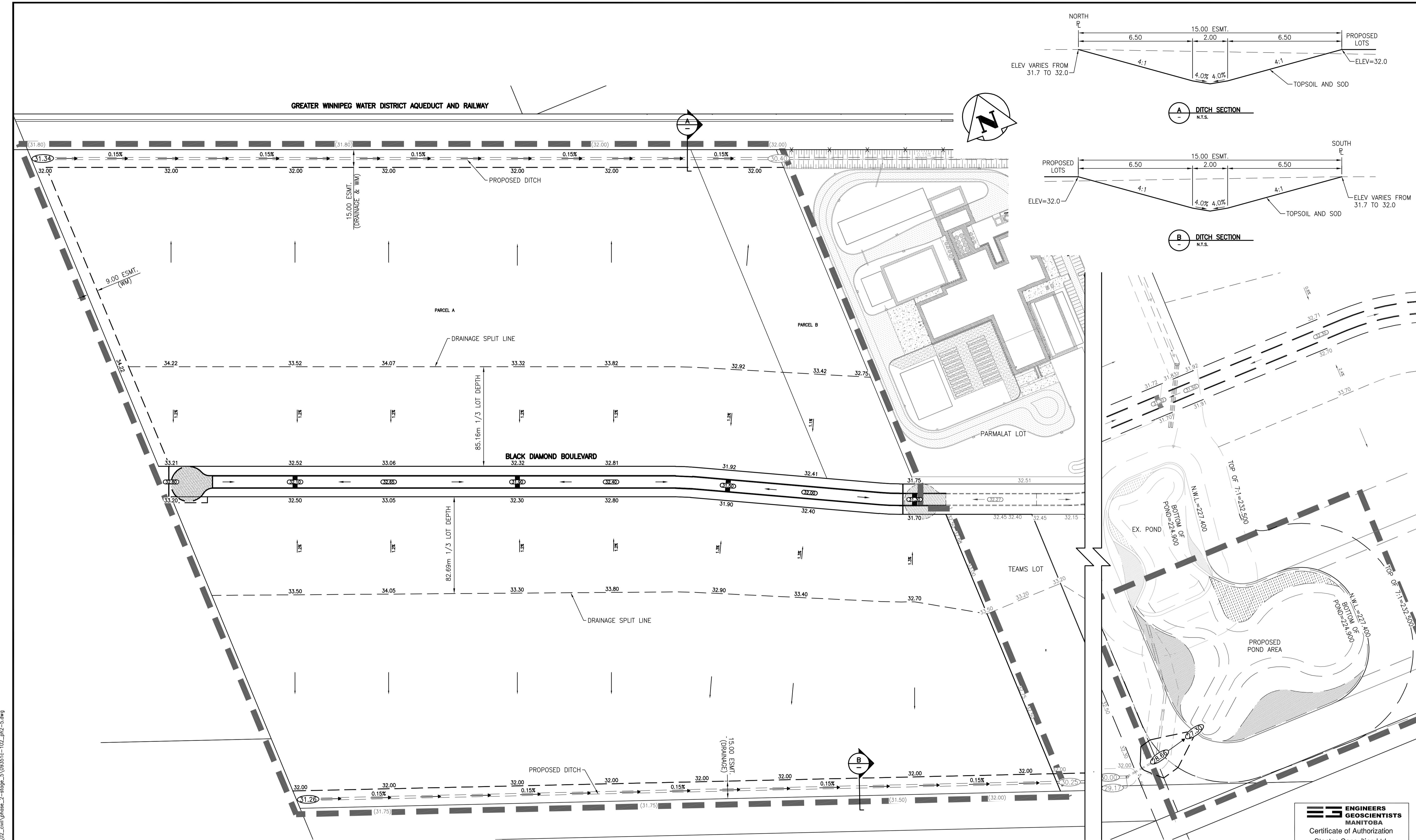


VA:1680444\1680444\0300_dfm\plan\0302_sheret_files\02_civil\phase_2-stage_5\09351c-102_ph2-5.dwg
 2019/02/25 09:41 AM BY: Dalek, Labanda



WARNING

IF POWER EQUIPMENT OR EXPLOSIVES ARE TO BE USED FOR EXCAVATION ON THIS PROJECT THE CONTRACTOR MUST:
 1) NOTIFY THE GAS COMPANY OF THE PROPOSED LOCATION OF EXCAVATION.
 2) TAKE PRECAUTION TO AVOID DAMAGE TO GAS COMPANY INSTALLATIONS.
 SEE PROVINCIAL REGULATION 140/92 FOR DETAILS

METRIC

WHOLE NUMBERS INDICATE MILLIMETRES
 DECIMALIZED NUMBERS INDICATE METRES

	CATCH BASIN		ROAD ELEVATION		LOT ELEVATION
	CURB INLET		DITCH ELEVATION		
	JUNCTIONS				
	CULVERT				
	CONCRETE				
	ASPHALT				
	SIDEWALK				
	PROPERTY LINE				
	SURVEY BAR				
	DITCH				
	EXISTING		PROPOSED		EXISTING
	LEGEND-PLAN		LEGEND-PLAN		PROPOSED

LOCATION APPROVED UNDERGROUND STRUCTURES

SUPV. U/G STRUCTURES COMMITTEE DATE

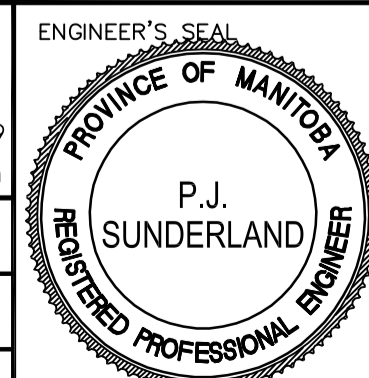
NOTE:
 LOCATION OF UNDERGROUND STRUCTURES AS SHOWN ARE BASED ON THE BEST INFORMATION AVAILABLE BUT NO GUARANTEE IS GIVEN THAT ALL EXISTING UTILITIES ARE SHOWN OR THAT THE GIVEN LOCATIONS ARE EXACT. CONFIRMATION OF EXISTENCE AND EXACT LOCATION OF ALL SERVICES MUST BE OBTAINED FROM THE INDIVIDUAL UTILITIES BEFORE PROCEEDING WITH CONSTRUCTION.

BENCHMARK: N.W. Cor. of Mazenod Rd. & G.W.W.D. R.O.W., 19 mm dia. x 4.6 m I.B. in Valve Box, 3.0 m W. of W.L. of Mazenod Rd. & 4.0 m N. of N. rail of tracks in G.W. W.D. R.O.W.

1:1500

Stantec
 500 - 311 Portage Avenue, Winnipeg MB Canada R3B 2B9
 Tel. 204.489.5900 Fax. 204.453.9012 www.stantec.com

DESIGNED BY	P.J.S.	CHECKED BY	D.P.M.
DRAWN BY	L.D.	APPROVED BY	P.J.S.
HOR. SCALE:	1:1500	RELEASED FOR CONSTRUCTION:	
VERTICAL:		DATE	2018. 10. 15
NO. REVISIONS		DATE	



THE CITY OF WINNIPEG
 Winnipeg
 ST. BONIFACE INDUSTRIAL PARK - PHASE 2 - STAGE 5
LOT GRADE PLAN

SHEET 3 OF 12
 CAD FILE DRAWING NUMBER 09351C-102_PH2-5.DWG
 CITY DRAWING NUMBER

CONSULTANT DRAWING NO. C-102