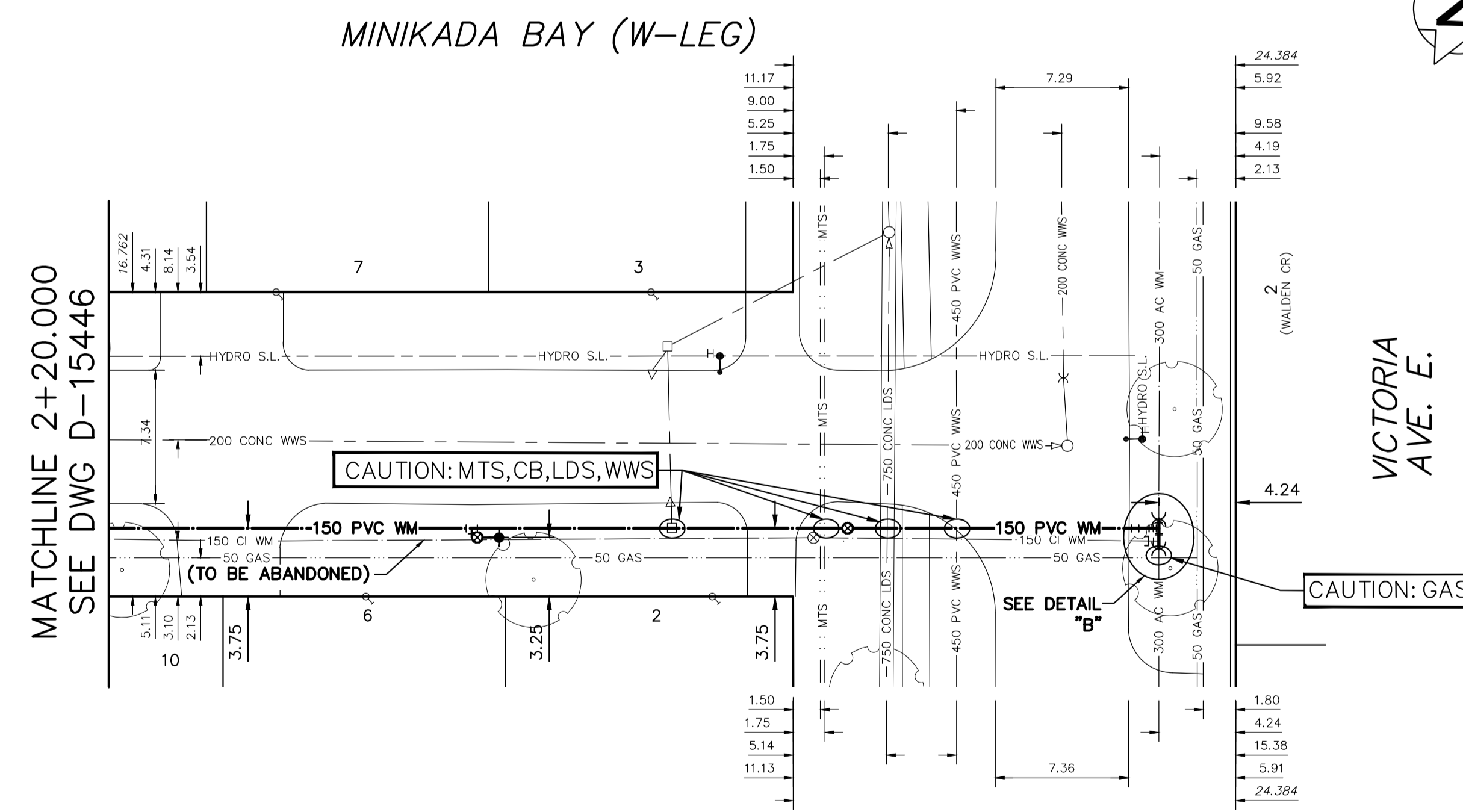


NOTE: CHAINAGES SHOWN ARE ALONG E. R. OF MINKADA BAY



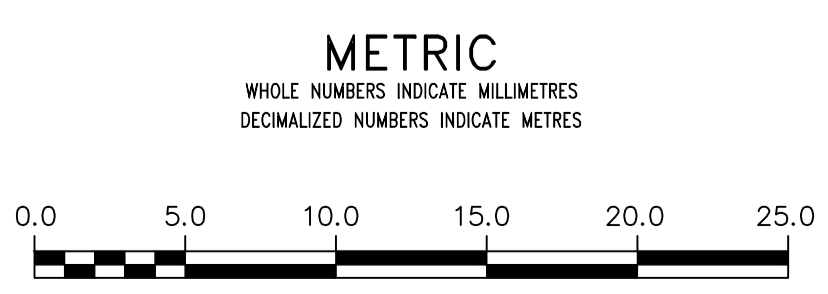
WATER SERVICE INFORMATION

ADDRESS	SIZE (mm) MATERIAL (STREET)	SIZE (mm) MATERIAL (PROP.)	SHORT & LONG MEASUREMENT	CORP. LOCATION	REMARKS
47 MINKADA BAY	20	20	4.57 NSL HSE		
RESIDENTIAL		CU	28.535 SNL MELROSE AVE. E.		OUTSIDE LIMITS
46 MINKADA BAY	20	20	4.07 NSL HSE		RECONNECT SERVICE
RESIDENTIAL		CU	21.610 SNL MELROSE AVE. E.		
42 MINKADA BAY	20	20	6.45 NSL HSE		RECONNECT SERVICE
RESIDENTIAL		CU	5.125 SNL MELROSE AVE. E.		
39 MINKADA BAY	20	20	4.62 NSL HSE		RECONNECT SERVICE
RESIDENTIAL		CU	8.553 SNL MELROSE AVE. E.		
38 MINKADA BAY	20	20	4.22 NSL HSE		RECONNECT SERVICE
RESIDENTIAL		CU	9.325 NNL MELROSE AVE. E.		
35 MINKADA BAY	20	20	6.50 NSL HSE		RECONNECT SERVICE
RESIDENTIAL		CU	25.028 NNL MELROSE AVE. E.		
34 MINKADA BAY	20	20	5.22 NSL HSE		RECONNECT SERVICE
RESIDENTIAL		CU	24.434 NNL MELROSE AVE. E.		
31 MINKADA BAY	20	20	3.16 NSL HSE		RECONNECT SERVICE
RESIDENTIAL		CU	39.358 NNL MELROSE AVE. E.		
30 MINKADA BAY	20	20	3.98 NSL HSE		RECONNECT SERVICE
RESIDENTIAL		CU	40.332 NNL MELROSE AVE. E.		
27 MINKADA BAY	20	20	6.38 NSL HSE		RECONNECT SERVICE
RESIDENTIAL		CU	58.288 NNL MELROSE AVE. E.		
26 MINKADA BAY	20	20	5.18 NSL HSE		RECONNECT SERVICE
RESIDENTIAL		CU	56.565 NNL MELROSE AVE. E.		
23 MINKADA BAY	20	20	3.38 NSL HSE		RECONNECT SERVICE
RESIDENTIAL		CU	70.583 NNL MELROSE AVE. E.		
22 MINKADA BAY	20	20	3.67 NSL HSE		RECONNECT SERVICE
RESIDENTIAL		CU	71.357 NNL MELROSE AVE. E.		
19 MINKADA BAY	20	20	6.15 NSL HSE		RECONNECT SERVICE
RESIDENTIAL		CU	86.724 NNL MELROSE AVE. E.		
18 MINKADA BAY	20	20	4.17 NSL HSE		RECONNECT SERVICE
RESIDENTIAL		CU	71.367 SSL VICTORIA AVE. E.		
15 MINKADA BAY	20	20	2.99 NSL HSE		RECONNECT SERVICE
RESIDENTIAL		CU	56.636 SSL VICTORIA AVE. E.		
14 MINKADA BAY	20	20	1.72 NSL HSE		RECONNECT SERVICE
RESIDENTIAL		CU	58.332 SSL VICTORIA AVE. E.		
11 MINKADA BAY	20	20	4.53 NSL HSE		RECONNECT SERVICE
RESIDENTIAL		CU	39.844 SSL VICTORIA AVE. E.		
10 MINKADA BAY	20	20	2.45 NSL HSE		RECONNECT SERVICE
RESIDENTIAL		CU	40.829 SSL VICTORIA AVE. E.		
7 MINKADA BAY	20	20	2.67 NSL HSE		RECONNECT SERVICE
RESIDENTIAL		CU	28.461 SSL VICTORIA AVE. E.		
6 MINKADA BAY	20	20	2.63 NSL HSE		RECONNECT SERVICE
RESIDENTIAL		CU	23.521 SSL VICTORIA AVE. E.		
3 MINKADA BAY	20	20	7.28 NSL HSE		RECONNECT SERVICE
RESIDENTIAL		CU	7.818 SSL VICTORIA AVE. E.		
2 MINKADA BAY	20	20	8.14 NSL HSE		RECONNECT SERVICE
RESIDENTIAL		CU	4.437 SSL VICTORIA AVE. E.		

* SERVICES TO BE RENEWED TO R. ALL OTHERS TO BE RECONNECTED

FOR INDEX SEE D-15445

NOTE: ALL VALVES TO BE INSTALLED COUNTERCLOCKWISE TO CLOSE



WARNING
IF POWER EQUIPMENT OR EXPLOSIVES ARE TO BE USED FOR EXCAVATION ON THIS PROJECT THE CONTRACTOR MUST:
1) NOTIFY THE GAS COMPANY OF THE PROPOSED LOCATION OF EXCAVATION.
2) TAKE PRECAUTION TO AVOID DAMAGE TO GAS COMPANY INSTALLATIONS.
SEE PROVINCIAL REGULATION 210/72 FOR DETAILS

LOCATION APPROVED UNDERGROUND STRUCTURES
SUPV. U/G STRUCTURES COMMITTEE DATE
NOTE:
LOCATION OF UNDERGROUND STRUCTURES AS SHOWN ARE BASED ON THE BEST INFORMATION AVAILABLE BUT NO GUARANTEE IS GIVEN THAT ALL EXISTING UTILITIES ARE SHOWN OR THAT THE GIVEN LOCATIONS ARE EXACT. CONFIRMATION OF EXISTENCE AND EXACT LOCATION OF ALL SERVICES MUST BE OBTAINED FROM THE INDIVIDUAL UTILITIES BEFORE PROCEEDING WITH CONSTRUCTION.

B.M. ELEV.	NO.	REVISIONS	DATE	BY

DESIGNED BY	MJK	CHECKED BY	SC
DRAWN BY	AJ	APPROVED BY	KZ
SCALE:	HORIZONTAL 1:250 VERTICAL 1:50		
DATE	2019 04 25	RELEASED FOR CONSTRUCTION	K. ZUREK
		DATE	2019-04-24

ENGINEER'S SEAL
ORIGINAL SIGNED BY S.R.J. COURNOYER 19/04/24
CONSULTANT DRAWING NUMBER

THE CITY OF WINNIPEG
WATER AND WASTE DEPARTMENT
ENGINEERING DIVISION
2019 WATER MAIN RENEWALS
CONTRACT 1
MINIKADA BAY (W-LEG)
120 N OF MELROSE AVENUE EAST TO VICTORIA AVENUE EAST
SHEET 4 OF 11
CITY DRAWING NUMBER
D-15447