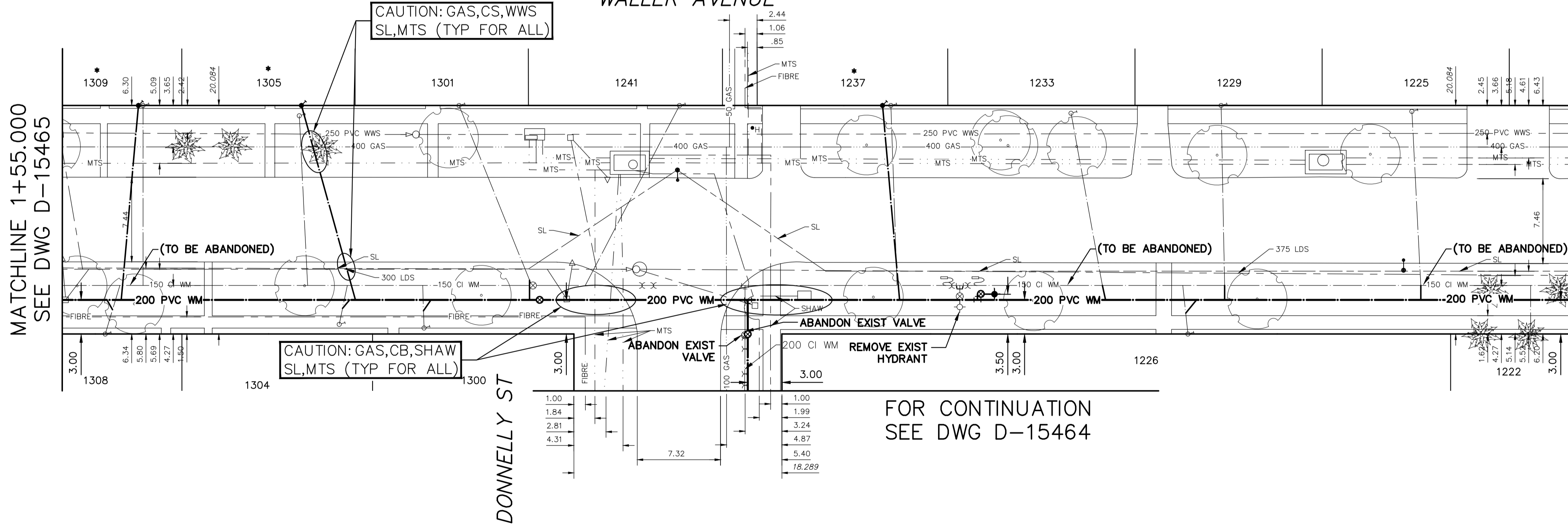


NOTE: CHAINAGES SHOWN ARE ALONG S. R. OF WALLER AVENUE



WATER SERVICE INFORMATION

ADDRESS	SIZE (mm) MATERIAL (STREET)	SIZE (mm) MATERIAL (PROP.)	SHORT & LONG MEASUREMENT	CORP. LOCATION	REMARKS
* 1309 WALLER ST RESIDENTIAL	20 CU	-	9.42 EWL HSE	OPP OF S/C	RENEW TO R W/20 CU PREVIOUS FROZEN SERVICE
1308 WALLER ST RESIDENTIAL	20 CU	-	4.27 WEL HSE	1.3 E OF S/C	RECONNECT SERVICE
* 1305 WALLER ST RESIDENTIAL	20 CU	-	7.47 WEL HSE	0.7 E OF S/C	RENEW TO R W/20 CU PREVIOUS FROZEN SERVICE
1304 WALLER ST RESIDENTIAL	20 CU	-	25.134 WML DONNELLY AVE	0.7 E OF S/C	RECONNECT SERVICE
1301 WALLER ST RESIDENTIAL	20 CU	-	10.83 EWL HSE	6.2 E OF S/C	RECONNECT SERVICE
1300 WALLER ST RESIDENTIAL	20 CU	-	20.626 WML DONNELLY AVE	0.3 W OF S/C	RECONNECT SERVICE
1241 WALLER ST RESIDENTIAL	20 CU	-	6.92 EWL HSE	8.1 W OF S/C	RECONNECT SERVICE
1240 WALLER ST RESIDENTIAL	20 CU	-	14.307 WML DONNELLY AVE	0.3 W OF S/C	RECONNECT SERVICE
* 1237 WALLER ST RESIDENTIAL	20 CU	-	1.58 WEL HSE	0.3 E OF S/C	RENEW TO R W/20 CU PREVIOUS FROZEN SERVICE
1233 WALLER ST RESIDENTIAL	20 CU	-	9.197 WML DONNELLY AVE	2.7 E OF S/C	RECONNECT SERVICE
1229 WALLER ST RESIDENTIAL	20 CU	-	7.29 WEL HSE	0.6 W OF S/C	RECONNECT SERVICE
1228 WALLER ST RESIDENTIAL	20 CU	-	9.469 EEL DONNELLY AVE	0.8 W OF S/C	RECONNECT SERVICE
1226 WALLER ST RESIDENTIAL	20 CU	31	19.666 EEL DONNELLY AVE	0.8 W OF S/C	RECONNECT SERVICE
1225 WALLER ST RESIDENTIAL	20 CU	-	6.55 WEL HSE	0.8 W OF S/C	RECONNECT SERVICE
1222 WALLER ST RESIDENTIAL	20 CU	-	38.620 EEL DONNELLY AVE	OPP OF S/C	RECONNECT SERVICE
			6.08 WEL HSE	OPP OF S/C	RECONNECT SERVICE
			55.392 EEL DONNELLY AVE	OPP OF S/C	RECONNECT SERVICE
			5.66 EWL HSE	OPP OF S/C	RECONNECT SERVICE
			65.835 EEL DONNELLY AVE	OPP OF S/C	RECONNECT SERVICE

\*SERVICES TO BE RENEWED TO R. ALL OTHERS TO BE RECONNECTED

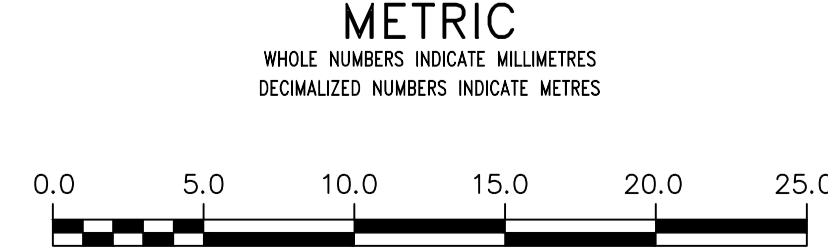
MATCHLINE 1+55.000 SEE DWG D-15465

MATCHLINE 2+87.500 SEE DWG D-15467

FOR CONTINUATION SEE DWG D-15464

FOR INDEX SEE 15456

NOTE: ALL VALVES TO BE INSTALL CLOCKWISE TO CLOSE



**WARNING**  
IF POWER EQUIPMENT OR EXPLOSIVES ARE TO BE USED FOR EXCAVATION ON THIS PROJECT THE CONTRACTOR MUST:  
1) NOTIFY THE GAS COMPANY OF THE PROPOSED LOCATION OF EXCAVATION.  
2) TAKE PRECAUTION TO AVOID DAMAGE TO GAS COMPANY INSTALLATIONS.  
SEE PROVINCIAL REGULATION 210/72 FOR DETAILS

**LOCATION APPROVED UNDERGROUND STRUCTURES**  
SUPV. U/G STRUCTURES COMMITTEE DATE  
NOTE:  
LOCATION OF UNDERGROUND STRUCTURES AS SHOWN ARE BASED ON THE BEST INFORMATION AVAILABLE BUT NO GUARANTEE IS GIVEN THAT ALL EXISTING UTILITIES ARE SHOWN OR THAT THE GIVEN LOCATIONS ARE EXACT. CONFIRMATION OF EXISTENCE AND EXACT LOCATION OF ALL UTILITIES MUST BE OBTAINED FROM THE INDIVIDUAL UTILITIES BEFORE PROCEEDING WITH CONSTRUCTION.

DESIGNED BY		CHECKED BY	
TGS		SC	
DRAWN BY		APPROVED BY	
RS		KZ	
SCALE:		RELEASED FOR CONSTRUCTION	
HORIZONTAL 1:250		KAS ZUREK	
VERTICAL 1:50		DATE 2019-05-13	
DATE		DATE	
2019 05 14		2019-05-13	
PLOT DATE:		PLOT DATE:	
2019 05 14		2019 05 14	

DESIGNED BY		CHECKED BY	
TGS		SC	
DRAWN BY		APPROVED BY	
RS		KZ	
SCALE:		RELEASED FOR CONSTRUCTION	
HORIZONTAL 1:250		KAS ZUREK	
VERTICAL 1:50		DATE 2019-05-13	
DATE		DATE	
2019 05 14		2019-05-13	
PLOT DATE:		PLOT DATE:	
2019 05 14		2019 05 14	

ENGINEER'S SEAL  
ORIGINAL SIGNED BY  
S.R.J COURNOYER  
19/05/13  
CONSULTANT DRAWING NUMBER

**THE CITY OF WINNIPEG**  
WATER AND WASTE DEPARTMENT  
ENGINEERING DIVISION  
2019 WATER MAIN RENEWALS  
CONTRACT 3  
WALLER STREET  
155 E OF VINCENT TO  
69 E OF DONNELLY AVENUE

SHEET 12 OF 14  
CITY DRAWING NUMBER  
D-15466