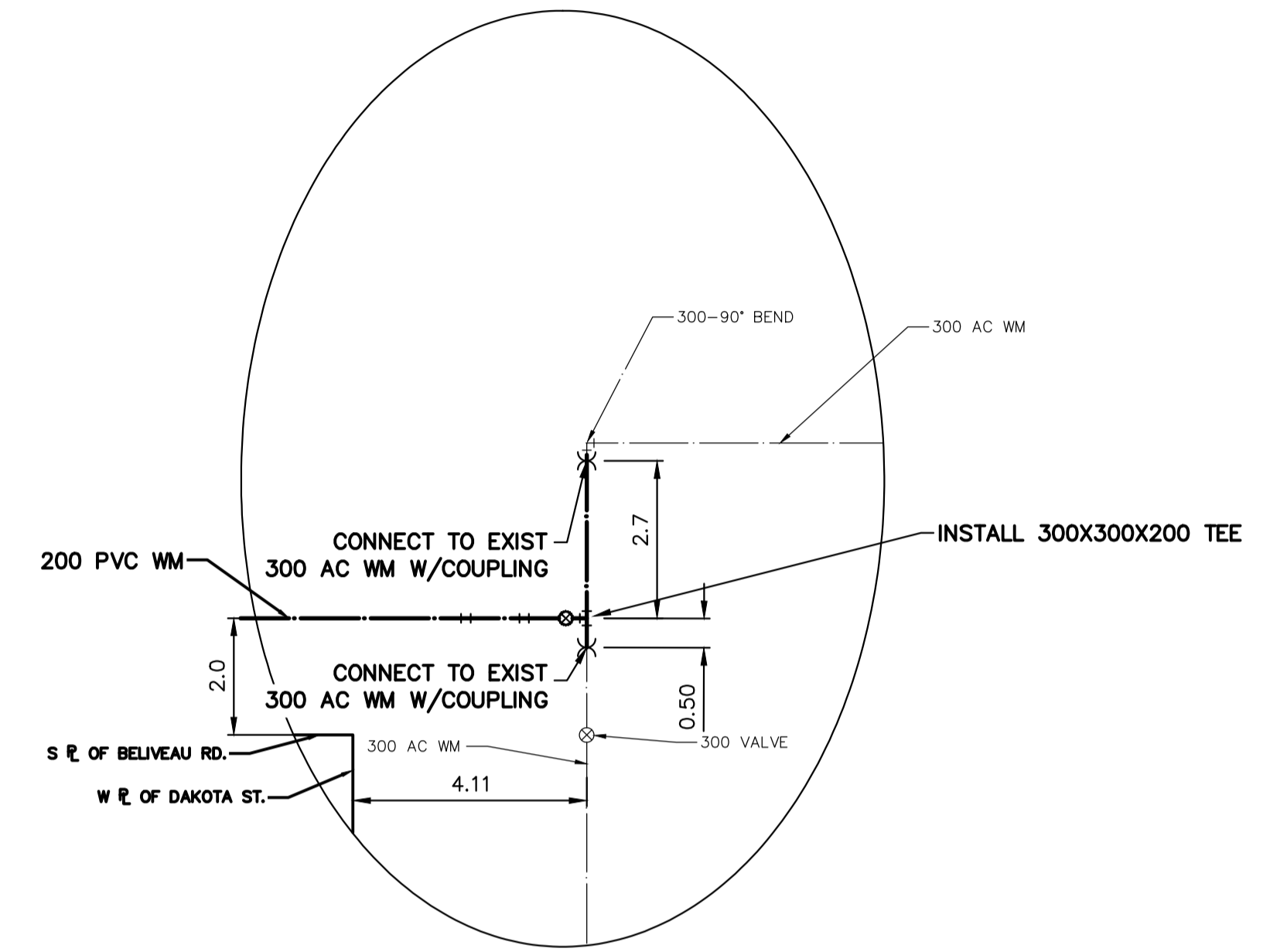


**WATER SERVICE INFORMATION**

ADDRESS	SIZE (mm) MATERIAL (STREET)	SIZE (mm) MATERIAL (PROP.)	SHORT & LONG MEASUREMENT	CORP. LOCATION	REMARKS
22 BELIVEAU RD	50	50	9.06 EWL BLDG	OPP OF S/C	RECONNECT SERVICE
RESIDENTIAL	CU	CU	56.099 EEL ST MARYS RD	OPP OF S/C	RECONNECT SERVICE
620 DAKOTA ST	50	50	34.16 WEL BLDG	OPP OF S/C	RECONNECT SERVICE
RESIDENTIAL	CU	CU	47.791 WEL DAKOTA ST	OPP OF VALVE	RECONNECT SERVICE
660 DAKOTA ST	100	50	14.89 WEL BLDG	OPP OF VALVE	RECONNECT SERVICE
RESIDENTIAL	CI	LEAD	18.492 WEL DAKOTA ST	OPP OF VALVE	RECONNECT SERVICE
1105 ST MARYS RD	150	150	21.96 EWL BLDG	OPP OF VALVE	RECONNECT SERVICE
COMMERCIAL	CI	CI	81.636 EEL ST MARYS RD		

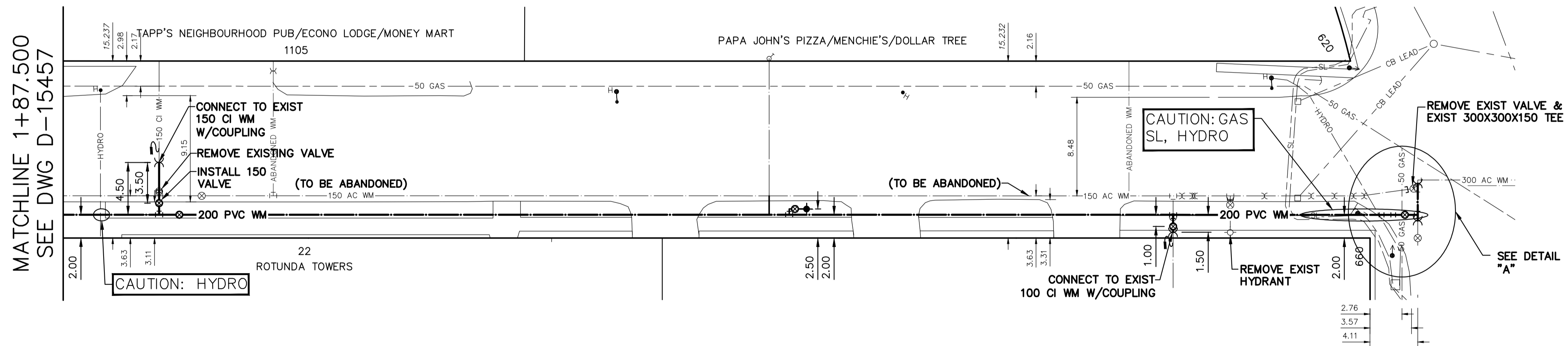
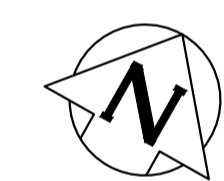
\* SERVICES TO BE RENEWED TO R. ALL OTHERS TO BE RECONNECTED



DETAIL "A"  
SCALE N.T.S.

NOTE: CHAINAGES SHOWN ARE ALONG S. R. OF BELIVEAU ROAD

**BELIVEAU ROAD**

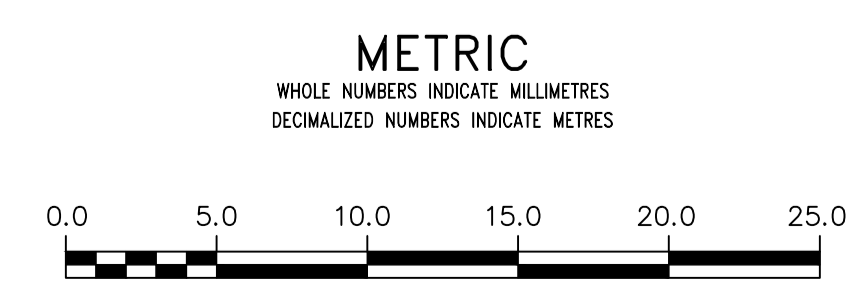


MATCHLINE 1+87.500  
SEE DWG D-15457

DAKOTA ST

FOR INDEX SEE  
D-15456

NOTE: ALL VALVES TO BE INSTALLED  
CLOCKWISE TO CLOSE



**WARNING**  
IF POWER EQUIPMENT OR EXPLOSIVES ARE TO BE USED FOR EXCAVATION ON THIS PROJECT THE CONTRACTOR MUST:  
1) NOTIFY THE GAS COMPANY OF THE PROPOSED LOCATION OF EXCAVATION.  
2) TAKE PRECAUTION TO AVOID DAMAGE TO GAS COMPANY INSTALLATIONS.  
SEE PROVINCIAL REGULATION 210/72 FOR DETAILS

**LOCATION APPROVED UNDERGROUND STRUCTURES**  
SUPV. U/G STRUCTURES COMMITTEE DATE  
NOTE:  
LOCATION OF UNDERGROUND STRUCTURES AS SHOWN ARE BASED ON THE BEST INFORMATION AVAILABLE BUT NO GUARANTEE IS GIVEN THAT ALL EXISTING UTILITIES ARE SHOWN OR THAT THE GIVEN LOCATIONS ARE EXACT. CONFIRMATION OF EXISTENCE AND EXACT LOCATION OF ALL SERVICES MUST BE OBTAINED FROM THE INDIVIDUAL UTILITIES BEFORE PROCEEDING WITH CONSTRUCTION.

B.M. ELEV.	NO.	REVISIONS	DATE	BY

DESIGNED BY	TGS	CHECKED BY	SC
DRAWN BY	BL	APPROVED BY	KZ
SCALE:		RELEASED FOR CONSTRUCTION	
HORIZONTAL	1:250		
VERTICAL	1:50		
DATE	2019 05 14		
		KAS ZUREK	
		2019-05-13	

ENGINEER'S SEAL  
ORIGINAL SIGNED BY  
S.R.J. COURNOYER  
19/05/13  
CONSULTANT DRAWING NUMBER

**THE CITY OF WINNIPEG**  
WATER AND WASTE DEPARTMENT  
ENGINEERING DIVISION  
2019 WATER MAIN RENEWALS  
CONTRACT 3  
BELIVEAU ROAD  
75 E OF ST MARYS ROAD TO  
DAKOTA STREET  
SHEET 4 OF 14  
CITY DRAWING NUMBER  
D-15458