

REFERENCE NOTES

- A. PAVEMENT DIMENSIONS ARE TO BACK OF CURB
- B. BASELINE IS CENTRE LINE ROADWAY
- C. PROPERTY LINES OBTAINED FROM CITY OF WINNIPEG L.B.I.S. AND NO SCALE FACTOR WAS APPLIED
- D. REFER TO AECOM FIELD BOOK NO. 5041

CONSTRUCTION NOTES

1. CONSTRUCT NEW ASPHALT PAVEMENT OVERLAY TYPE 1A (85mm AVG. THICKNESS)
2. REMOVE EXISTING CONCRETE AND CONSTRUCT NEW 150mm REINFORCED CONCRETE AND CONSTRUCT NEW 150mm REINFORCED CONCRETE SIDEWALK OVERLAY
3. CONSTRUCT NEW CONCRETE BARRIER CURB (100mm REVEAL HT. DOWELLED)
4. CONSTRUCT NEW CONCRETE MODIFIED BARRIER CURB (150mm REVEAL HT. DOWELLED)
5. CONSTRUCT NEW CONCRETE CURB RAMP (10mm HT. MONOLITHIC)
6. CONSTRUCT NEW 100mm CONCRETE SIDEWALK
7. RENEW EXISTING 100mm CONCRETE SIDEWALK
8. ADJUST AND REGRADE PAVING STONES
9. ADJUST EXISTING CATCHBASIN / MANHOLE FRAME TO GRADE
10. ADJUST EXISTING WATER VALVE TO GRADE
11. CONSTRUCT NEW CONCRETE BARRIER CURB (100mm REVEAL HT. SEPARATE)
12. REMOVE EXISTING CATCHBASIN / CATCHPIT
13. INSTALL NEW CURB AND GUTTER INLET c/w CATCHBASIN 1800mm (SD-024) AND CONNECT TO EXISTING LEAD
14. INSTALL NEW CURB AND GUTTER INLET c/w CATCHPIT (SD-023) AND CONNECT TO EXISTING LEAD



METRIC
WHOLE NUMBERS INDICATE MILLIMETRES
DECIMALIZED NUMBERS INDICATE METRES

EXISTING	LEGEND - PLAN	PROPOSED	EXISTING	LEGEND - PLAN	PROPOSED	EXISTING	LEGEND - PROFILE	PROPOSED
150 mm W.M.	WATERMAIN	150 mm W.M.	HYDRO	HYDRO	HYDRO	— x —	Q PROFILE	— x —
300mm L.D.S.	LAND DRAINAGE SEWER	300mm L.D.S.	M.T.S.	M.T.S.	M.T.S.	— □ —	WEST GUTTER	— □ —
250mm W.W.S.	WASTEWATER SEWER	250mm W.W.S.	CONCRETE	CONCRETE	CONCRETE	— ○ —	EAST GUTTER	— ○ —
250mm W.W.S.	MANHOLE	250mm W.W.S.	ASPHALT	ASPHALT	ASPHALT	— □ —	N/W PROPERTY LINE	— □ —
250mm W.W.S.	CATCH BASIN	250mm W.W.S.	PROPERTY LINE	PROPERTY LINE	PROPERTY LINE	— ○ —	S/E PROPERTY LINE	— ○ —
250mm W.W.S.	CATCH PIT	250mm W.W.S.	SURVEY BAR	SURVEY BAR	SURVEY BAR	— □ —		
250mm W.W.S.	JUNCTIONS	250mm W.W.S.	ELEVATION	ELEVATION	ELEVATION	— □ —		
250mm W.W.S.	CULVERT	250mm W.W.S.	TREE	TREE	TREE	— ○ —		
250mm W.W.S.	GAS	250mm W.W.S.	SIDEWALK RAMP	SIDEWALK RAMP	SIDEWALK RAMP	— □ —		
250mm W.W.S.		250mm W.W.S.	CONCRETE SIDEWALK	CONCRETE SIDEWALK	CONCRETE SIDEWALK	— □ —		
250mm W.W.S.		250mm W.W.S.	FENCE	FENCE	FENCE	— □ —		

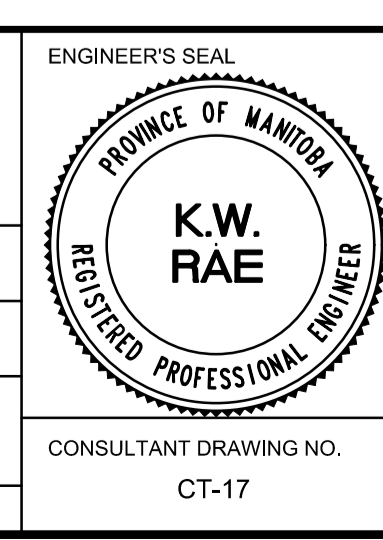
LOCATION APPROVED UNDERGROUND STRUCTURES

SUPV. U/G STRUCTURES COMMITTEE DATE

NOTE:
LOCATION OF UNDERGROUND STRUCTURES AS SHOWN ARE BASED ON THE BEST INFORMATION AVAILABLE. BUT NO GUARANTEE IS GIVEN THAT ALL EXISTING UTILITIES ARE SHOWN OR THAT THE GIVEN LOCATIONS ARE EXACT. CONFIRMATION OF EXISTENCE AND EXACT LOCATION OF ALL SERVICES MUST BE OBTAINED FROM THE INDIVIDUAL UTILITIES BEFORE PROCEEDING WITH CONSTRUCTION.

B.M.	NO.	REVISIONS	DATE	BY
654271	0	ISSUED FOR TENDER	05/02/2019	KWR
233.084	A	ISSUED FOR REVIEW	03/15/2018	BC

AECOM	
DESIGNED BY	JA
CHECKED BY	BC/KWR
DRAWN BY	JA
APPROVED BY	
HOR. SCALE:	1:250
VERTICAL:	1:10
RELEASED FOR CONSTRUCTION BY:	
DATE	



THE CITY OF WINNIPEG
PUBLIC WORKS DEPARTMENT
ENGINEERING DIVISION

2019 RESIDENTIAL STREET RENEWAL PROGRAM

CALEDON ROAD - KILLARNEY AVE TO MAPLERIDGE AVE
ASPHALT PAVEMENT REHABILITATION
STA. 0+200.000 TO MAPLERIDGE AVE

CITY DRAWING NUMBER
SHEET 17 OF 17

CONSULTANT DRAWING NO. CT-17