

- REFERENCE NOTES**
- A. PAVEMENT DIMENSIONS ARE TO BACK OF CURB
 - B. BASELINE IS CENTRE LINE RIGHT-OF-WAY
 - C. PROPERTY LINES OBTAINED FROM CITY OF WINNIPEG L.B.I.S., AND NO SCALE FACTOR WAS APPLIED
 - D. REFER TO AECOM FIELD BOOK NO. 5040

- CONSTRUCTION NOTES**
1. REMOVE EXISTING PAVEMENT AND CONSTRUCT NEW 150mm REINFORCED CONCRETE PAVEMENT
 2. CONSTRUCT NEW BARRIER CURB (180mm HT. INTEGRAL)
 3. CONSTRUCT NEW LIP CURB (40mm HT. INTEGRAL)
 4. CONSTRUCT NEW MODIFIED BARRIER CURB (180mm HT. INTEGRAL)
 5. RENEW EXISTING 100mm CONCRETE SIDEWALK
 6. INSTALL NEW CURB RAMP (10mm HT. INTEGRAL)
 7. ADJUST EXISTING MANHOLE TO GRADE
 8. ADJUST EXISTING WATER VALVE TO GRADE
 9. INSTALL NEW DETECTIBLE WARNING SURFACE TILE
 10. REMOVE AND REINSTALL EXISTING PATIO BLOCKS TO GRADE



METRIC
WHOLE NUMBERS INDICATE MILLIMETRES
DECIMALIZED NUMBERS INDICATE METRES

| | | | | | |
|--------------|---------------------|-------------------|---------------------|------------------|-------------------|
| 150mm W.M. | WATERMAIN | 150mm W.M. | HYDRO | — x — | Q PROFILE |
| Hydrant | HYDRANT | Manhole | M.T.S. | — □ — | WEST GUTTER |
| Valve | VALVE | Survey Bar | CONCRETE | — ○ — | EAST GUTTER |
| 300mm L.D.S. | LAND DRAINAGE SEWER | 235.750 | ASPHALT | — ◇ — | N/W PROPERTY LINE |
| 250mm W.W.S. | WASTEWATER SEWER | 500ø | PROPERTY LINE | — ○ — | S/E PROPERTY LINE |
| Manhole | MANHOLE | Tree | SURVEY BAR | | |
| Catch Basin | CATCH BASIN | Sidewalk Ramp | ELEVATION (235.750) | | |
| Catch Pit | CATCH PIT | Concrete Sidewalk | TREE | | |
| Junctions | JUNCTIONS | Fence | SIDEWALK RAMP | | |
| Culvert | CULVERT | | CONCRETE SIDEWALK | | |
| Gas | GAS | | FENCE | | |
| EXISTING | LEGEND - PLAN | PROPOSED | EXISTING | LEGEND - PROFILE | PROPOSED |

LOCATION APPROVED UNDERGROUND STRUCTURES

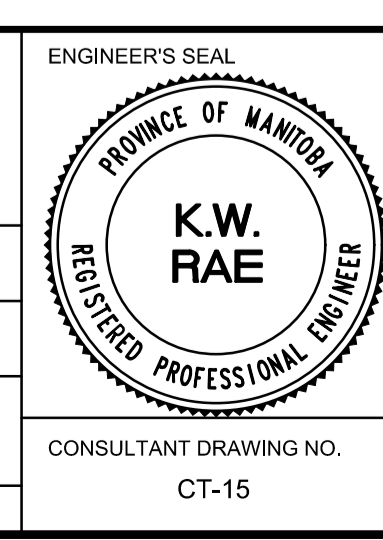
SUPV. U/G STRUCTURES COMMITTEE DATE

NOTE:
LOCATION OF UNDERGROUND STRUCTURES AS SHOWN ARE BASED ON THE BEST INFORMATION AVAILABLE. BUT NO GUARANTEE IS GIVEN THAT ALL EXISTING UTILITIES ARE SHOWN OR THAT THE GIVEN LOCATIONS ARE EXACT. CONFIRMATION OF EXISTENCE AND EXACT LOCATION OF ALL SERVICES MUST BE OBTAINED FROM THE INDIVIDUAL UTILITIES BEFORE PROCEEDING WITH CONSTRUCTION.

| | | | |
|---------------|-----------------------------------------------------------------------------------------------------------------------------------------------------------|------------|-----|
| B.M. 16 | Zone 8B, S.E. Cor. Ave. Genereau & Derge Dr. Tsk. in W. Conc. Foundation of No. 30 Ave. Genereau, 3.5m S. & 0.2m below stucco from N.W. Cor. of dwelling. | | |
| ELEV. 233.569 | | | |
| NO. | REVISIONS | DATE | BY |
| 0 | ISSUED FOR TENDER | 05/02/2019 | KWR |
| A | ISSUED FOR REVIEW | 03/15/2019 | BC |

AECOM

| | | | |
|-------------|-------|-------------------------------|--------|
| DESIGNED BY | JA | CHECKED BY | BC/KWR |
| DRAWN BY | JA | APPROVED BY | |
| HOR. SCALE: | 1:250 | RELEASED FOR CONSTRUCTION BY: | |
| VERTICAL: | 1:10 | DATE | |



THE CITY OF WINNIPEG
PUBLIC WORKS DEPARTMENT
ENGINEERING DIVISION

2019 LOCAL STREET RENEWAL PROGRAM

VILLENEUVE BOULEVARD - DUCHARME AVENUE TO TRAPPISTES STREET
CONCRETE RECONSTRUCTION
STATION 0+470 TO TRAPPISTES STREET

CITY DRAWING NUMBER
SHEET 15 OF 17

CONSULTANT DRAWING NO. CT-15