

REFERENCE NOTES

- A. PAVEMENT DIMENSIONS ARE TO BACK OF CURB
- B. BASELINE IS CENTRE LINE ROADWAY
- C. PROPERTY LINES OBTAINED FROM CITY OF WINNIPEG L.B.I.S., AND NO SCALE FACTOR WAS APPLIED
- D. REFER TO AECOM FIELD BOOK NO. 5039

CONSTRUCTION NOTES

1. CONSTRUCT NEW ASPHALT PAVEMENT OVERLAY TYPE 1A (85mm AVG. THICKNESS)
2. REMOVE EXISTING CONCRETE AND CONSTRUCT NEW 150mm REINFORCED CONCRETE PAVEMENT c/w 85mm ASPHALTIC OVERLAY
3. RENEW EXISTING CONCRETE LIP CURB (40mm HT. DOWELLED)
4. PLANE EXISTING MOUNTABLE CURB AND INSTALL NEW CONCRETE BARRIER CURB (100mm REVEAL HT. DOWELLED)
5. PLACE PAVEMENT REPAIR FABRIC ON AREAS NEEDED
6. INSTALL NEW CURB AND GUTTER INLET c/w CATCHBASIN 1800mm (SD-024) AND CONNECT TO EXISTING MAINLINE
7. REMOVE AND REINSTALL AND RE-GRADE PAVING STONES
8. ADJUST EXISTING MANHOLE FRAME TO GRADE
9. REMOVE EXISTING CATCHBASIN/CATCHPIT AND ABANDON EXISTING LEAD
10. ADJUST EXISTING WATER VALVE TO GRADE



METRIC
WHOLE NUMBERS INDICATE MILLIMETRES
DECIMALIZED NUMBERS INDICATE METRES

150 mm W.M.	WATERMAIN	150 mm W.M.	HYDRO	— x —	Q PROFILE
Hydrant	HYDRANT	Hydrant	M.T.S.	North Gutter	NORTH GUTTER
Valve	VALVE	Valve	CONCRETE	South Gutter	SOUTH GUTTER
300mm L.D.S.	LAND DRAINAGE SEWER	300mm L.D.S.	ASPHALT	N/W PROPERTY LINE	N/W PROPERTY LINE
250mm W.W.S.	WASTEWATER SEWER	250mm W.W.S.	PROPERTY LINE	S/E PROPERTY LINE	S/E PROPERTY LINE
Manhole	MANHOLE	Manhole	SURVEY BAR		
Catch Basin	CATCH BASIN	Catch Basin	ELEVATION	(235.750)	
Catch Pit	CATCH PIT	Catch Pit	TREE		
Junctions	JUNCTIONS	Junctions	SIDEWALK RAMP		
Culvert	CULVERT	Culvert	CONCRETE SIDEWALK		
Gas	GAS	Gas	FENCE		
EXISTING	LEGEND - PLAN	PROPOSED	LEGEND - PLAN	PROPOSED	EXISTING
			LEGEND - PROFILE	PROPOSED	

LOCATION APPROVED UNDERGROUND STRUCTURES

SUPV. U/G STRUCTURES COMMITTEE DATE

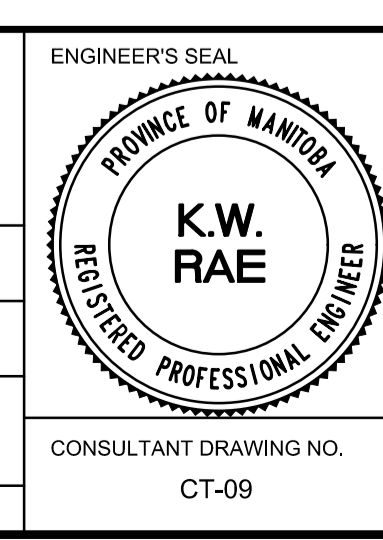
NOTE:
LOCATION OF UNDERGROUND STRUCTURES AS SHOWN ARE BASED ON THE BEST INFORMATION AVAILABLE, BUT NO GUARANTEE IS GIVEN THAT ALL EXISTING UTILITIES ARE SHOWN OR THAT THE GIVEN LOCATIONS ARE EXACT. CONFIRMATION OF EXISTENCE AND EXACT LOCATION OF ALL SERVICES MUST BE OBTAINED FROM THE INDIVIDUAL UTILITIES BEFORE PROCEEDING WITH CONSTRUCTION.

B.M. 74M574 Tab. in W. wall of Conc. parking garage of No. 77 University Cres. E. of Pembina Hwy. 0.8 m N. of S.W. cor. of garage, 8.2 m below ELEV. 234.128 recreation deck.

NO.	REVISIONS	DATE	BY
0	ISSUED FOR TENDER	05/02/2019	KWR
A	ISSUED FOR REVIEW	03/15/2019	BC

AECOM

DESIGNED BY	JA	CHECKED BY	BC/KWR
DRAWN BY	JA	APPROVED BY	
HOR. SCALE:	1:250	RELEASED FOR CONSTRUCTION BY:	
VERTICAL:	1:10	DATE	



THE CITY OF WINNIPEG
PUBLIC WORKS DEPARTMENT
ENGINEERING DIVISION

2019 RESIDENTIAL STREET RENEWAL PROGRAM

THATCHER DRIVE - PEMBINA HWY TO UNIVERSITY CRESCENT
ASPHALT PAVEMENT REHABILITATION
STATION 0+180 TO STATION 0+290

CITY DRAWING NUMBER
SHEET 09 OF 18

CONSULTANT DRAWING NO. CT-09