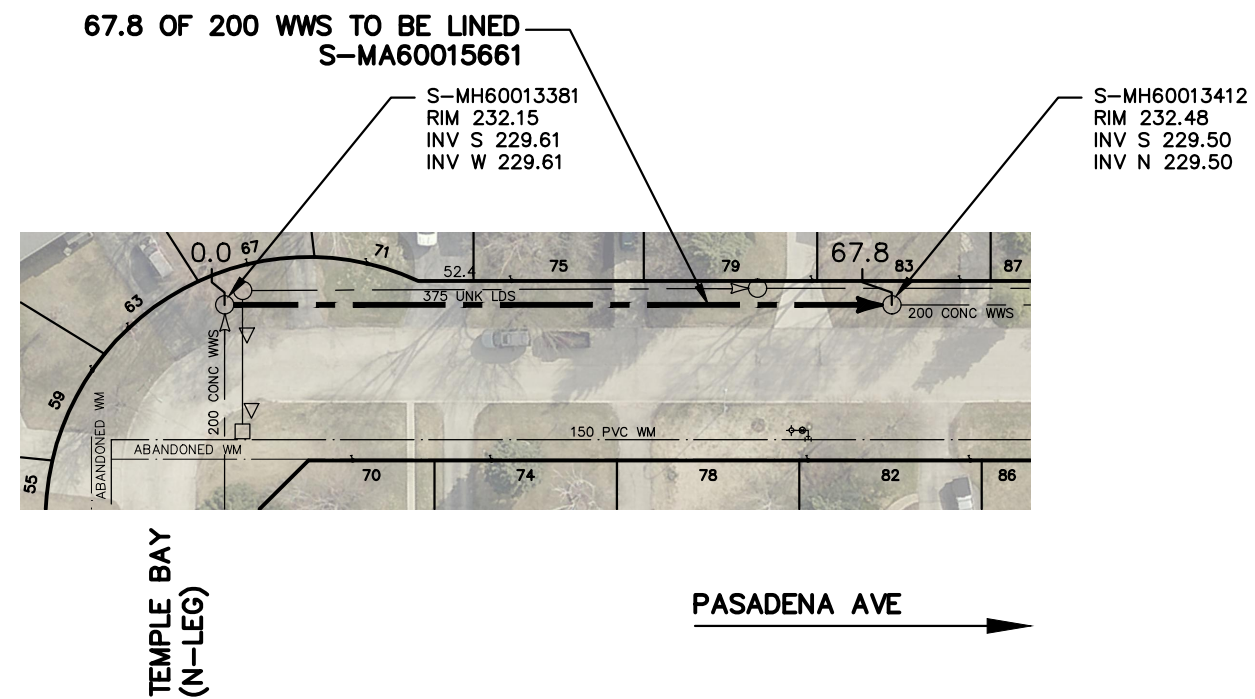


TEMPLE BAY

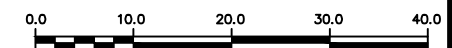


SEWER JUNCTION INFORMATION FROM SEWER VIDEO INSPECTION		
SEWER ID S-MA60015661		
DISTANCE FROM MH ID S-MH60013381		
DISTANCE	DIAMETER	CLOCK
2.2	150	11
13.1	150	2
13.6	150	10
28.4	150	11
28.7	150	2
44.0	150	10
44.7	150	2
59.2	150	2
59.8	150	10

FOR INDEX SEE
12125

METRIC

WHOLE NUMBERS INDICATE MILLIMETRES
DECIMALIZED NUMBERS INDICATE METRES



WARNING

IF POWER EQUIPMENT OR EXPLOSIVES ARE TO BE USED FOR EXCAVATION ON THIS PROJECT THE CONTRACTOR MUST:

- 1) NOTIFY THE GAS COMPANY OF THE PROPOSED LOCATION OF EXCAVATION.
- 2) TAKE PRECAUTION TO AVOID DAMAGE TO GAS COMPANY INSTALLATIONS.

SEE PROVINCIAL REGULATION 210/72 FOR DETAILS

LOCATION APPROVED UNDERGROUND STRUCTURES

SUPV. U/G STRUCTURES COMMITTEE DATE

NOTE:

LOCATION OF UNDERGROUND STRUCTURES AS SHOWN ARE BASED ON THE BEST INFORMATION AVAILABLE BUT NO GUARANTEE IS GIVEN THAT ALL EXISTING UTILITIES ARE SHOWN OR THAT THE GIVEN LOCATIONS ARE EXACT. CONFIRMATION OF EXISTENCE AND EXACT LOCATION OF ALL SERVICES MUST BE OBTAINED FROM THE INDIVIDUAL UTILITIES BEFORE PROCEEDING WITH CONSTRUCTION.

B.M.
ELEV.

NO.	REVISIONS	DATE	BY

DESIGNED BY	SC	CHECKED BY	SC
DRAWN BY	BL	APPROVED BY	KZ
SCALE: HORIZONTAL VERTICAL	1:750	RELEASED FOR CONSTRUCTION	K.ZUREK
DATE	2019 03 06	DATE	2019 03 06

ENGINEER'S SEAL

ORIGINAL
SIGNED BY
S.R.J.
COURNOYER
19/03/05

CONSULTANT DRAWING NUMBER

-



THE CITY OF WINNIPEG WATER AND WASTE DEPARTMENT ENGINEERING DIVISION

2018 SEWER MAIN RENEWALS
BY CIPP LINING

TEMPLE BAY
MH AT TEMPLE BAY (N-LEG) TO
1ST MH N PASADENA AVENUE

SHEET 57 OF 69

CITY DRAWING NUMBER

12179

PLOT DATE: 2019 03 06

BID OPPORTUNITY: 146-2019
CONTRACT NUMBER: 3

FILE PATH: R:\DRAWINGS\SEWER\2018 RENEWALS\RENEWALS & ASSOCIATED WORKS\CONTRACT 3\CONSTRUCTION DWGS\
FILE NAME: TEMPLE BAY.dwg