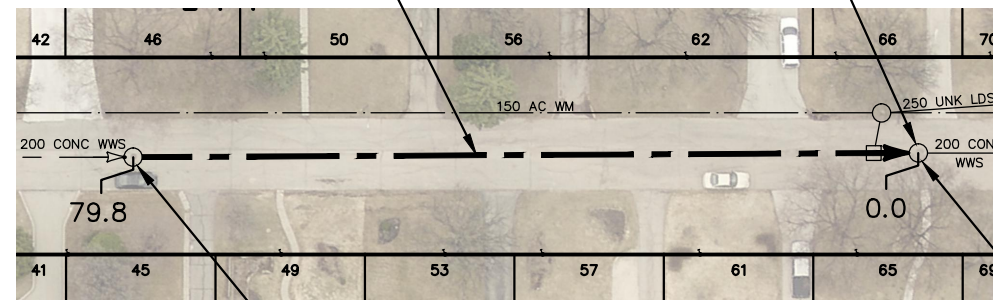




RILEY CRESCENT

79.8 OF 200 WWS TO BE LINED
S-MA60017586

GROUT RISER 0.3-2.1, REPLACE BENCHING
(TO BE DONE BY OTHERS)



S-MH60015207
RIM 232.11
INV S 228.36
INV N 227.63

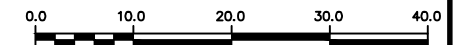
S-MH60015210
RIM 231.77
INV S 229.31
INV N 227.63

SEWER JUNCTION INFORMATION FROM SEWER VIDEO INSPECTION SEWER ID S-MA60017586		
DISTANCE FROM MH ID S-MH60015210		
DISTANCE	DIAMETER	CLOCK
7.7	100	10
10.2	100	2
25.5	100	10
28.6	100	2
41.4	100	11
50.4	100	2
53.5	100	10
68.2	100	10
71.7	100	1

FOR INDEX SEE
12125

METRIC

WHOLE NUMBERS INDICATE MILLIMETRES
DECIMALIZED NUMBERS INDICATE METRES



WARNING

IF POWER EQUIPMENT OR EXPLOSIVES ARE TO BE USED FOR EXCAVATION ON THIS PROJECT THE CONTRACTOR MUST:

- 1) NOTIFY THE GAS COMPANY OF THE PROPOSED LOCATION OF EXCAVATION.
- 2) TAKE PRECAUTION TO AVOID DAMAGE TO GAS COMPANY INSTALLATIONS.

SEE PROVINCIAL REGULATION 210/72 FOR DETAILS

LOCATION APPROVED UNDERGROUND STRUCTURES

SUPV. U/G STRUCTURES COMMITTEE DATE


NOTE:

LOCATION OF UNDERGROUND STRUCTURES AS SHOWN ARE BASED ON THE BEST INFORMATION AVAILABLE BUT NO GUARANTEE IS GIVEN THAT ALL EXISTING UTILITIES ARE SHOWN OR THAT THE GIVEN LOCATIONS ARE EXACT. CONFIRMATION OF EXISTENCE AND EXACT LOCATION OF ALL SERVICES MUST BE OBTAINED FROM THE INDIVIDUAL UTILITIES BEFORE PROCEEDING WITH CONSTRUCTION.

B.M. ELEV.	NO.	REVISIONS	DATE	BY

DESIGNED BY	SC	CHECKED BY	SC
DRAWN BY	BL	APPROVED BY	KZ
SCALE:	1:750	RELEASED FOR CONSTRUCTION	K.ZUREK
HORIZONTAL		DATE	2019 03 06
VERTICAL		DATE	2019 03 06

ENGINEER'S SEAL
ORIGINAL SIGNED BY S.R.J. COURNOYER 19/03/05
CONSULTANT DRAWING NUMBER -



THE CITY OF WINNIPEG

WATER AND WASTE DEPARTMENT
ENGINEERING DIVISION

2018 SEWER MAIN RENEWALS
BY CIPP LINING
RILEY CRESCENT
1ST MH N OF DOWKER AVENUE TO
2ND MH N OF DOWKER AVENUE

SHEET 49 OF 69
CITY DRAWING NUMBER 12171

PLOT DATE: 2019 03 06

BID OPPORTUNITY: 146-2019
CONTRACT NUMBER: 3

FILE PATH: R:\DRAWINGS\SEWER\2018 RENEWALS\RENEWALS & ASSOCIATED WORKS\CONTRACT 3\CONSTRUCTION DWGS\
FILE NAME: RILEY CR (W LEG).dwg