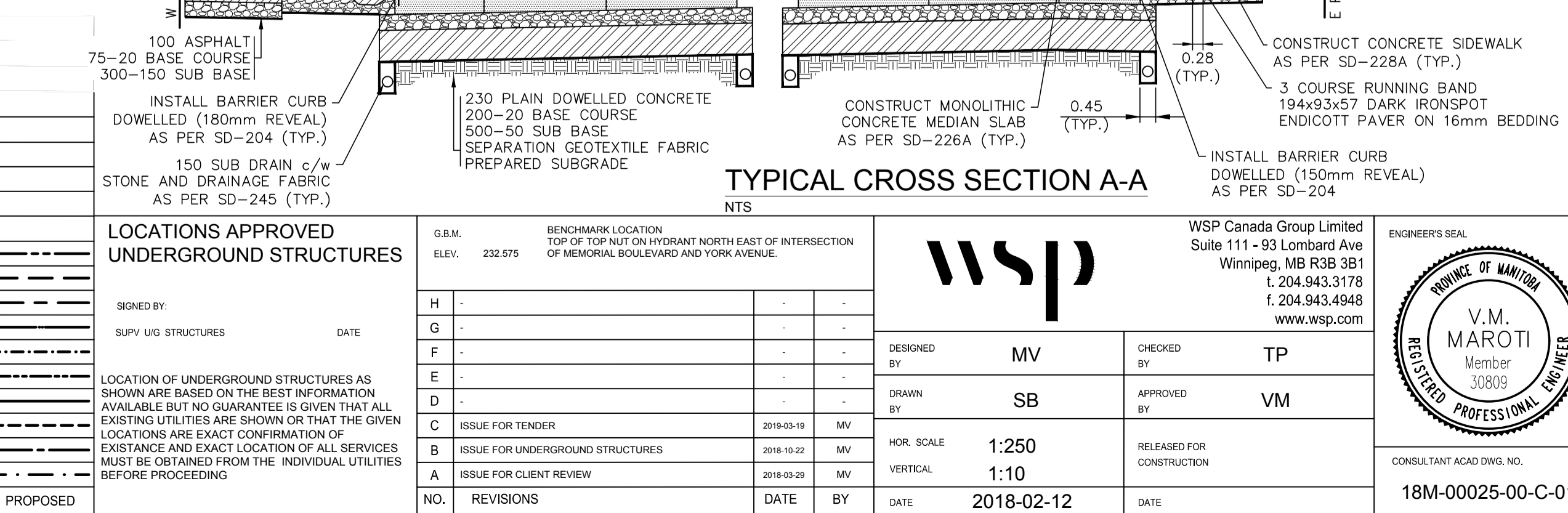


EXISTING	PROPOSED	EXISTING	LEGEND-PLAN	PROPOSED	EXISTING	LEGEND-PROFILE	PROPOSED
WATER MAIN	---	---	IRON BAR	---	---	---	---
LAND DRAINAGE SEWER	---	---	HYDRO POLE & LIGHT STANDARD	---	---	---	---
WASTE WATER SEWER	---	---	LIGHT STANDARD OR TRAFFIC SIGNAL	---	---	---	---
HYDRO	---	---	HYDRO POLE	---	---	---	---
M.T.S.	---	---	CURB RAMP	---	---	---	---
GAS	---	---	DETECTABLE WARNING SURFACE TILE	---	---	---	---
SIGNALS	---	---	EDGE OF SIDEWALK	---	---	---	---
MANHOLE	---	---	FENCE	---	---	---	---
CATCH BASIN	---	---	PROPERTY LINE	---	---	---	---
CURB INLET	---	---	EDGE OF ASPHALT	---	---	---	---
UTILITIES ADJUSTED	---	---	EDGE OF CONCRETE	---	---	---	---
PLUG	---	---	MODIFIED BARRIER CURB	---	---	---	---
HYDRANT	---	---	BARRIER CURB	---	---	---	---
VALVE	---	---	CONCRETE SIDEWALK	---	---	---	---
CURB STOP	---	---	CONCRETE SLAB	---	---	---	---
GROUND GRADE	---	---	ASPHALT	---	---	---	---
PAVEMENT GRADE	---	---	GLASSGRID	---	---	---	---
ANCHOR	---	---	CONCRETE REPAIRS	---	---	---	---
CIVIC ADDRESS	---	---	PAVING STONES	---	---	---	---
LEGEND-PLAN	---	---	LEGEND-PLAN	---	---	LEGEND-PROFILE	---



- NOTES:**
- ALL WORK AND MATERIALS TO BE IN ACCORDANCE WITH THE LATEST REVISION OF THE CITY OF WINNIPEG STANDARD CONSTRUCTION SPECIFICATIONS.
 - CONTRACTOR TO CONFIRM THE LOCATION OF ALL UTILITIES/SERVICES IN THE FIELD PRIOR TO CONSTRUCTION.
 - ALL ROADWAY DIMENSIONS SHOWN ARE TO BACK OF CURB.
 - ADD 200.00 TO ABBREVIATED ELEVATIONS TO OBTAIN GEODETIC ELEVATION.
 - PAVEMENT REPAIRS SHOWN ARE ONLY A REPRESENTATIVE APPROXIMATION OF THE TENDERED QUANTITIES.
 - RENEW CURB AND SIDEWALK AS IDENTIFIED BY CONTRACT ADMINISTRATOR.
 - ALL PRIVATE WALKWAYS TO BE ADJUSTED TO NEW SIDEWALK OR TOP OF CURB ELEVATION, AS REQUIRED.
 - MODIFIED BARRIER CURB TO BE CONSTRUCTED AT ALL INTERSECTION RADII AND APPROACH RADII.
 - INSTALL 40MM LIP CURB THROUGH ALL APPROACHES UNLESS OTHERWISE NOTED.
 - CONTRACTORS TO TAKE PRECAUTIONARY STEPS TO PROTECT EXISTING TREES WITHIN THE LIMITS OF CONSTRUCTION FROM DAMAGE FROM CONSTRUCTION ACTIVITIES AS OUTLINED IN THE SPECIFICATIONS.
 - LAMP STANDARDS, HYDRO POLES, AND ANCHORS THAT REQUIRE TEMPORARY SUPPORT, REMOVAL OR REPLACEMENT, TO BE DONE SO AT THE EXPENSE OF THE CONTRACTOR AS NECESSARY.
 - ALL BOULEVARDS TO BE SODDED UNLESS OTHERWISE NOTED. LIMITS TO BE IDENTIFIED IN THE FIELD BY THE CONTRACT ADMINISTRATOR.
 - TRAFFIC SERVICES TO PAINT TRAFFIC LINES AND BICYCLE LANE MARKINGS (IF REQ'D).
 - CONTRACTOR TO CONFIRM LOCATION AND LIMITS OF SEWER REPAIRS BY PERFORMING VIDEO INSPECTION AND REVIEWING WITH CONTRACT ADMINISTRATOR PRIOR TO CONSTRUCTION (IF REQ'D).
 - ADJUST ALL WATER VALVES, HYDRANTS, MANHOLES, AND CATCH BASINS IN WORK AREA TO GRADE.

PRELIMINARY
NOT FOR CONSTRUCTION

METRIC
WHOLE NUMBERS INDICATE MILLIMETRES
DECIMALIZED NUMBERS INDICATE METRES



THE CITY OF WINNIPEG
PUBLIC WORKS DEPARTMENT
ENGINEERING SERVICES DIVISION

2018 REGIONAL STREET PROGRAM
MEMORIAL BOULEVARD
YORK AVENUE TO ST. MARY AVENUE
PAVEMENT RECONSTRUCTION
STA. 3+01.47 TO STA. 4+23.57

CITY DRAWING NUMBER: P-3498-01
SHEET 01 OF 7
BID NO. 137-2019

CONSULTANT ACAD. DWG. NO. 18M-00025-00-C-01

wsp WSP Canada Group Limited
Suite 111 - 93 Lombard Ave
Winnipeg, MB R3B 3B1
t. 204.943.3178
f. 204.943.4948
www.wsp.com

DESIGNED BY: MV
CHECKED BY: TP
DRAWN BY: SB
APPROVED BY: VM

HOR. SCALE: 1:250
VERTICAL: 1:10

RELEASED FOR CONSTRUCTION: 2018-02-12

WSP

NO. REVISIONS DATE BY

LOCATIONS APPROVED UNDERGROUND STRUCTURES

SIGNED BY: DATE

LOCATION OF UNDERGROUND STRUCTURES AS SHOWN ARE BASED ON THE BEST INFORMATION AVAILABLE BUT NO GUARANTEE IS GIVEN THAT ALL EXISTING UTILITIES ARE SHOWN OR THAT THE GIVEN LOCATIONS ARE EXACT CONFIRMATION OF EXISTENCE AND EXACT LOCATION OF ALL SERVICES MUST BE OBTAINED FROM THE INDIVIDUAL UTILITIES BEFORE PROCEEDING

G.A.M. BENCHMARK LOCATION TOP OF TOP NUT ON HYDRANT NORTH EAST OF INTERSECTION OF MEMORIAL BOULEVARD AND YORK AVENUE. ELEV. 232.575