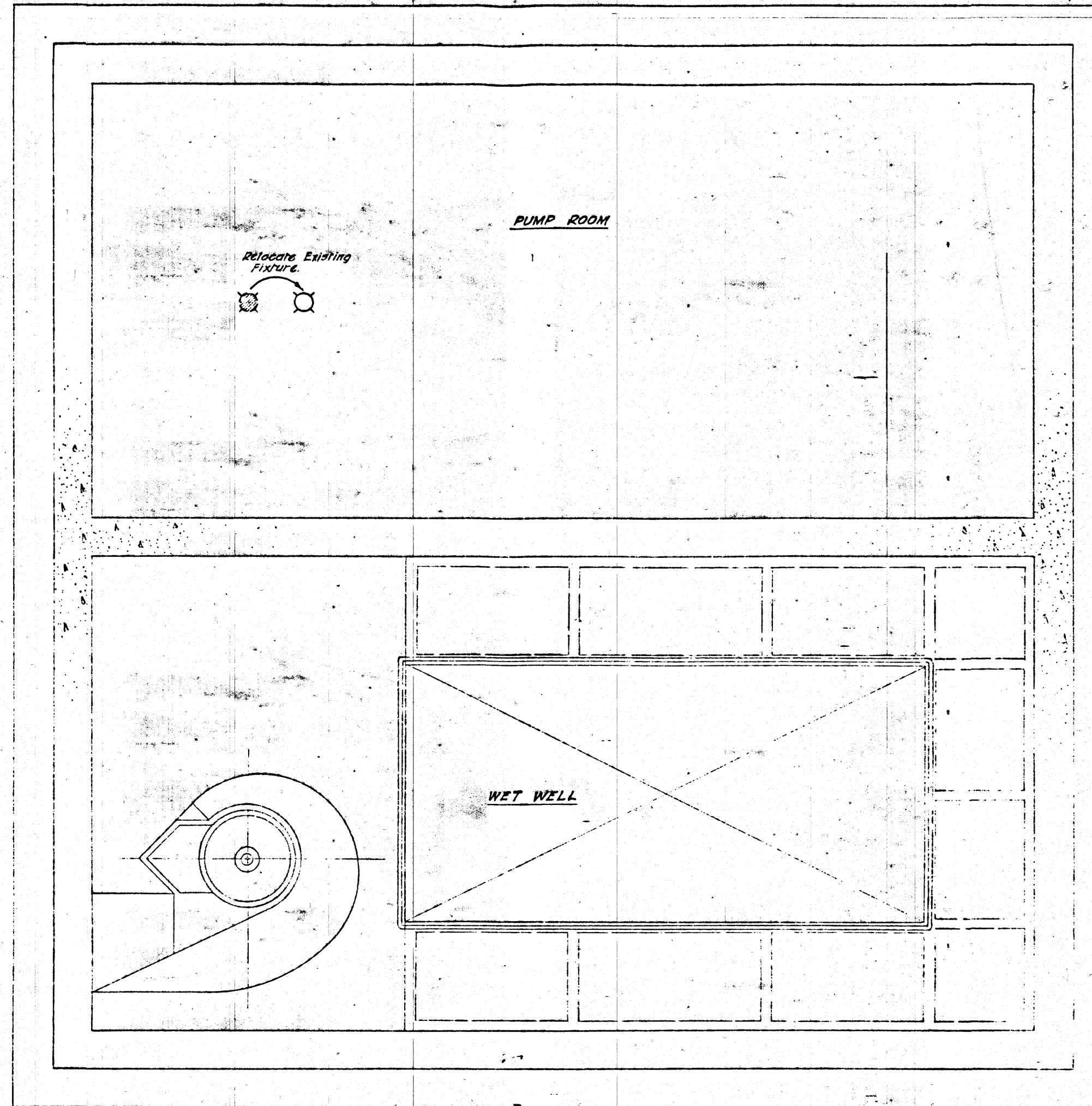
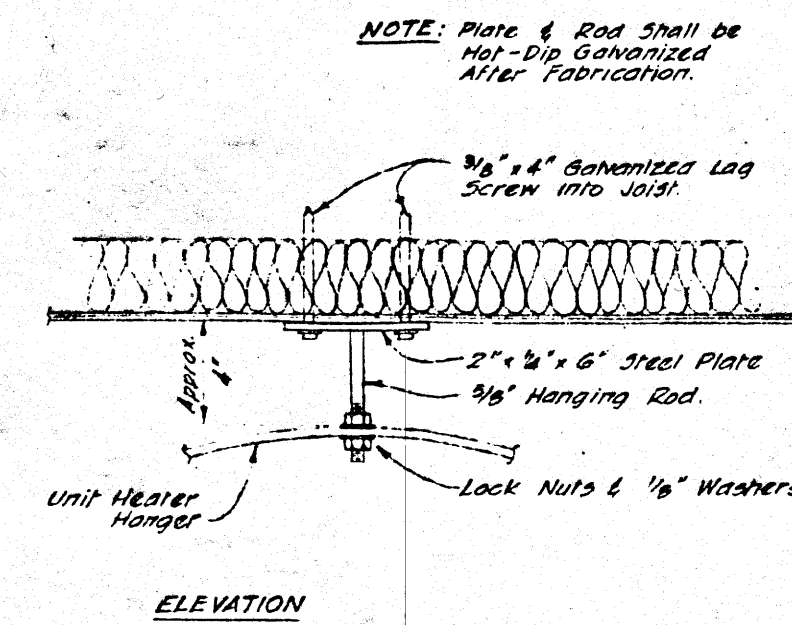
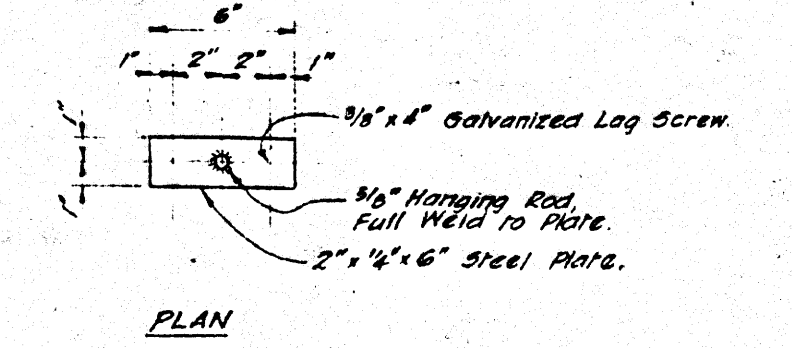


PLAN OF SUPERSTRUCTURE 3/8" = 1'-0"

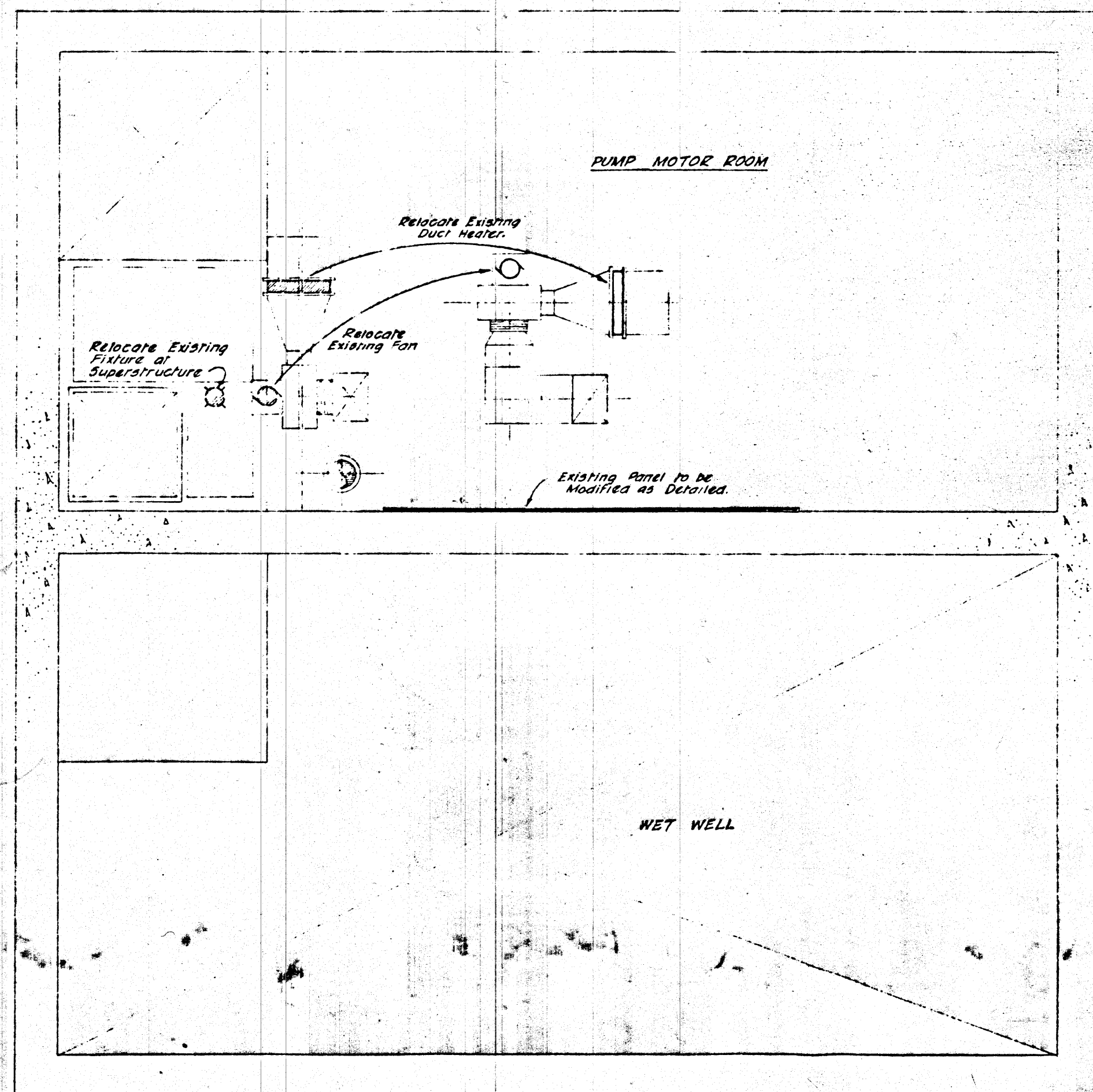


PLAN AT PUMP LEVEL 3/8" = 1'-0"

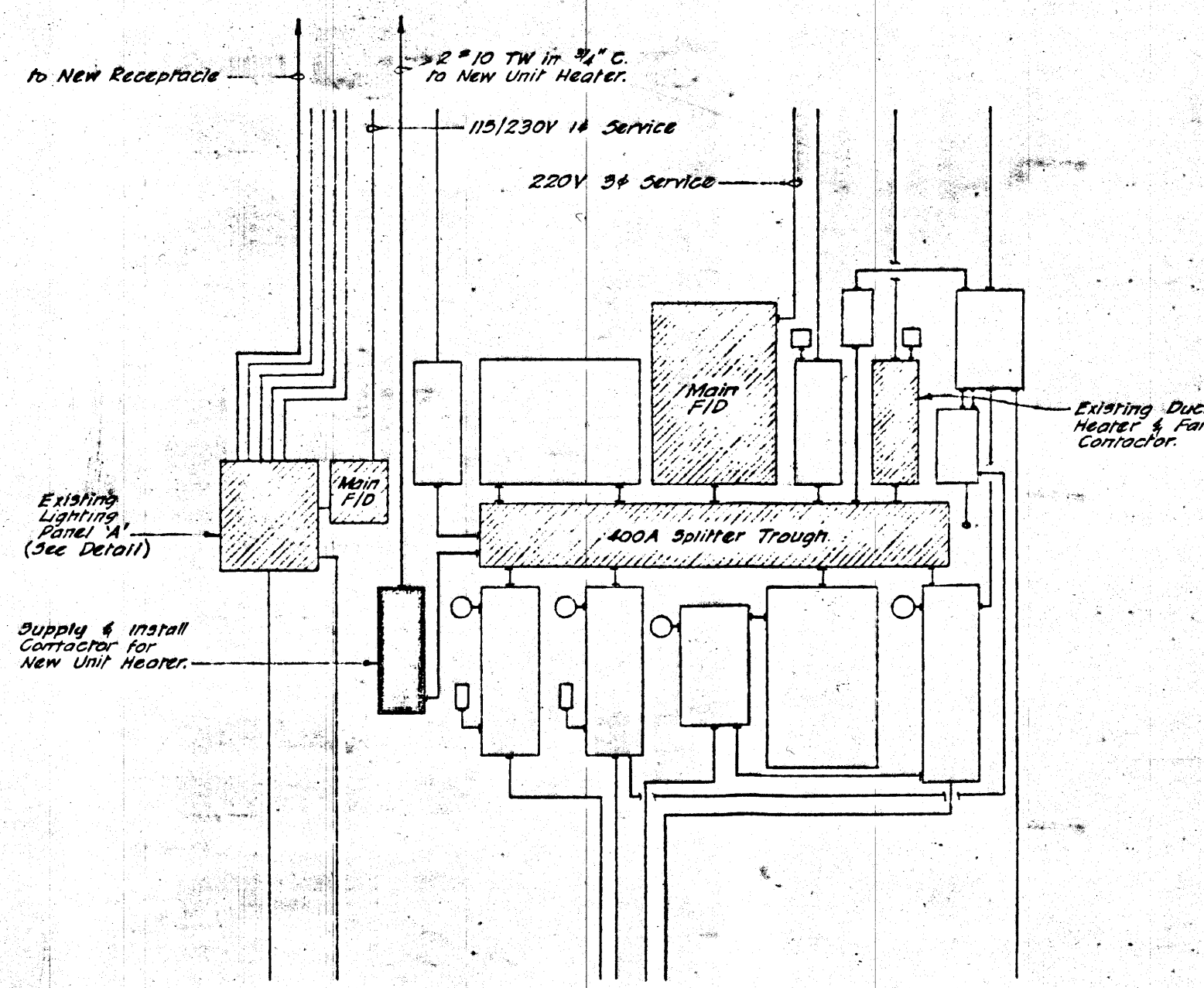


UNIT HEATER HANGER DETAIL
1-1/2" = 1'-0"

- GENERAL NOTES:**
1. Conduits and wiring affected by the structural modifications to the existing structure shown on Drawing No. S-2 are to be relocated to suit.
 2. Conduit and wiring within the Superstructure Extension is to be concealed. Conduit and wiring within the existing structure shall be located to suit conditions or as directed by the Engineer.



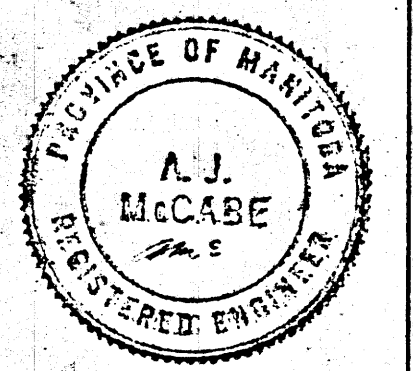
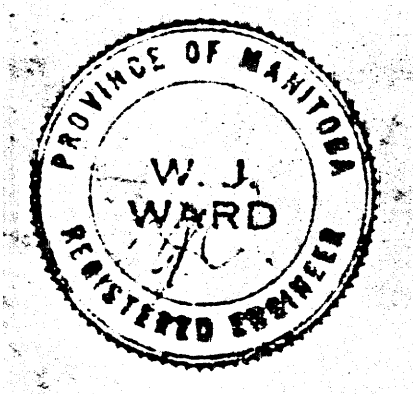
PLAN AT PUMP MOTOR LEVEL 3/8" = 1'-0"



PANEL LAYOUT N.T.S.

EXISTING LIGHTING PANEL "A"					
LOAD	BR. SIZE	BR. NO.	BR. SIZE	BR. NO.	LOAD
Lights	15A	1	2	15A	Lights
Lights	15A	3	4	15A	Lights & Fan
Receptacle	15A	5	6	15A	Lights
Receptacle and Sump Pump	15A	7	8	15A	Float Switch
New Receptacle	15A	9	10	15A	Spare
Spare	15A	11	12	15A	Spare

Done Overall - Economy Electric 7720353



APPROVED BY: *A. J. McCabe* DATE: *Nov. 25, 1968*

MUNICIPALITY OF ASSINIBOIA
WESTWOOD DR. SEWAGE PUMPING STATION

ELECTRICAL
PLANS & DETAILS

UNDERWOOD McLELLAN & ASSOCIATES
LIMITED

CONSULTING PROFESSIONAL ENGINEERS

MANITOBA SASKATCHEWAN ALBERTA BRITISH COLUMBIA

DRAWN BY JKD	DESIGNED BY JKD
CHECKED BY	CHECKED BY <i>Ch...</i>
DATE DRAWN NOV. 25, 1968	SCALE NOTED
JOB NO. 41-02-063-98-01	DRAWING NO.
SHEET 6 OF 6	

Note: See Dwg 92-FS-Q-1

92-FS-Q-2

file # 10554 9