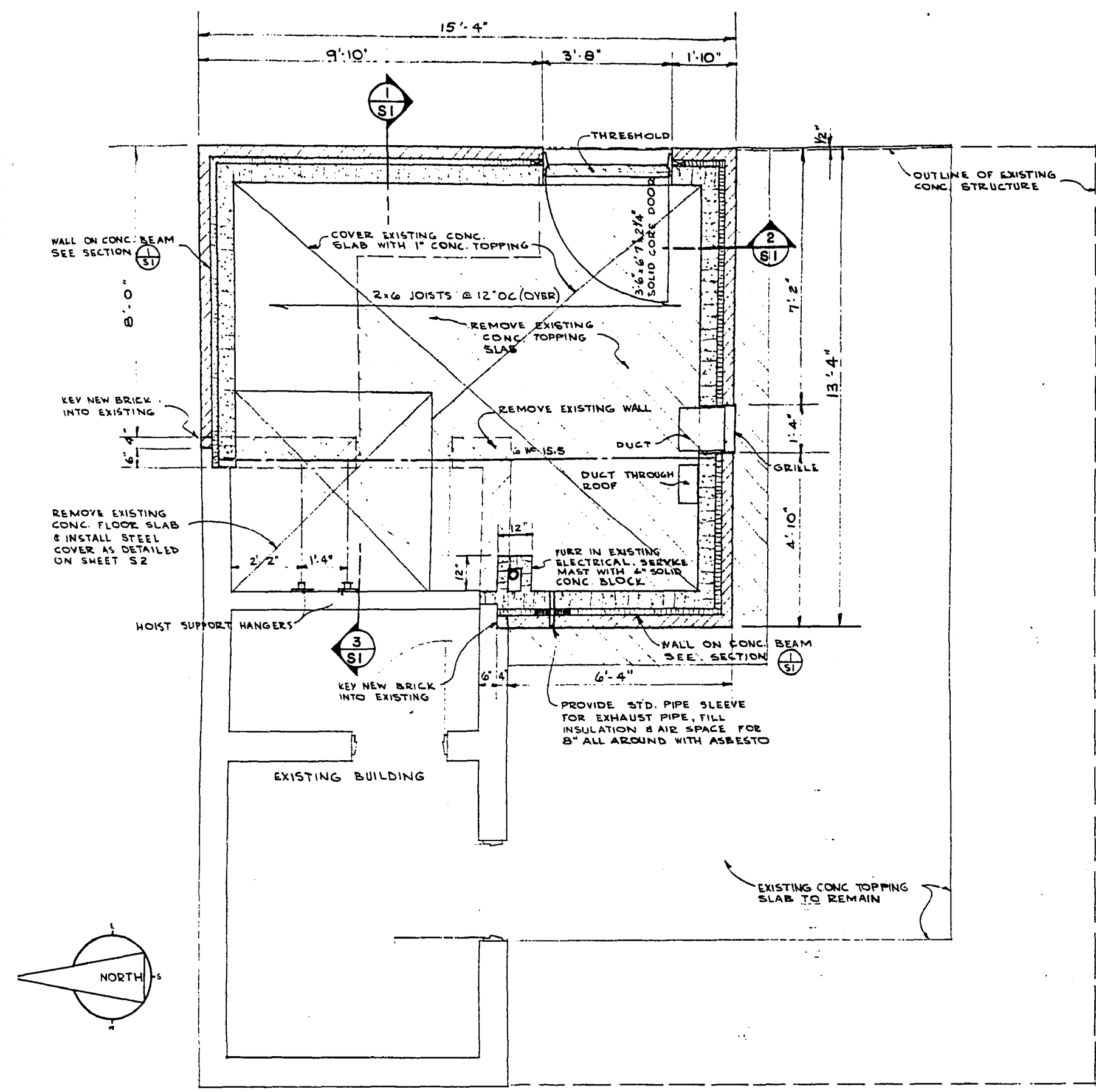


file # SP 10284

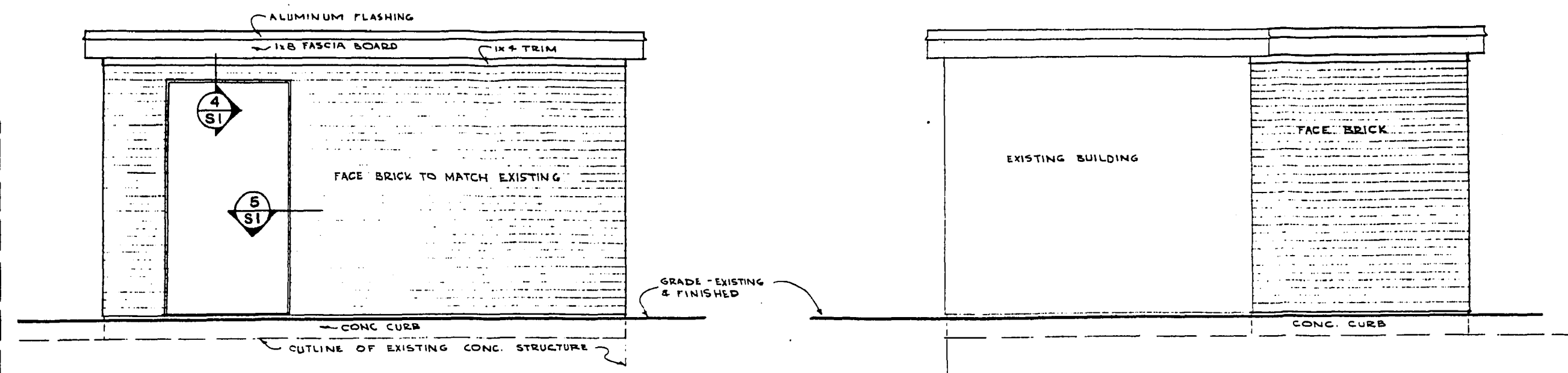
1107

REF. or DRAWING NO.

DETAILS

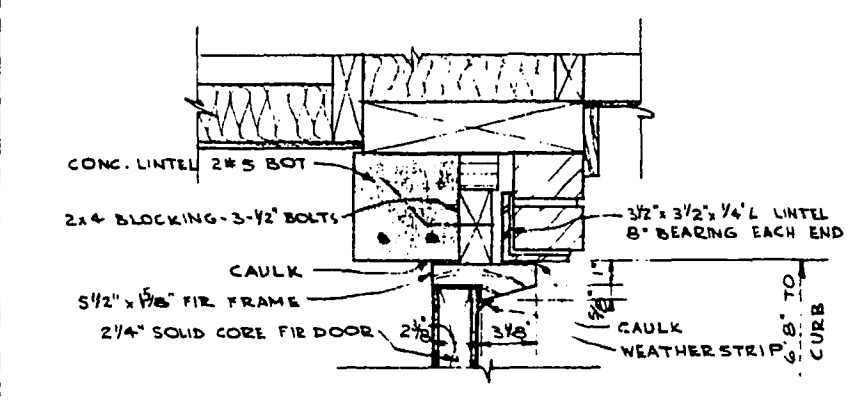


PLAN AT ELEVATION 75.78'

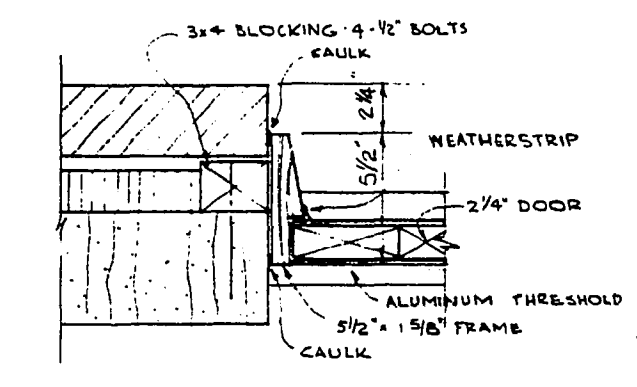


EAST ELEVATION

WEST ELEVATION

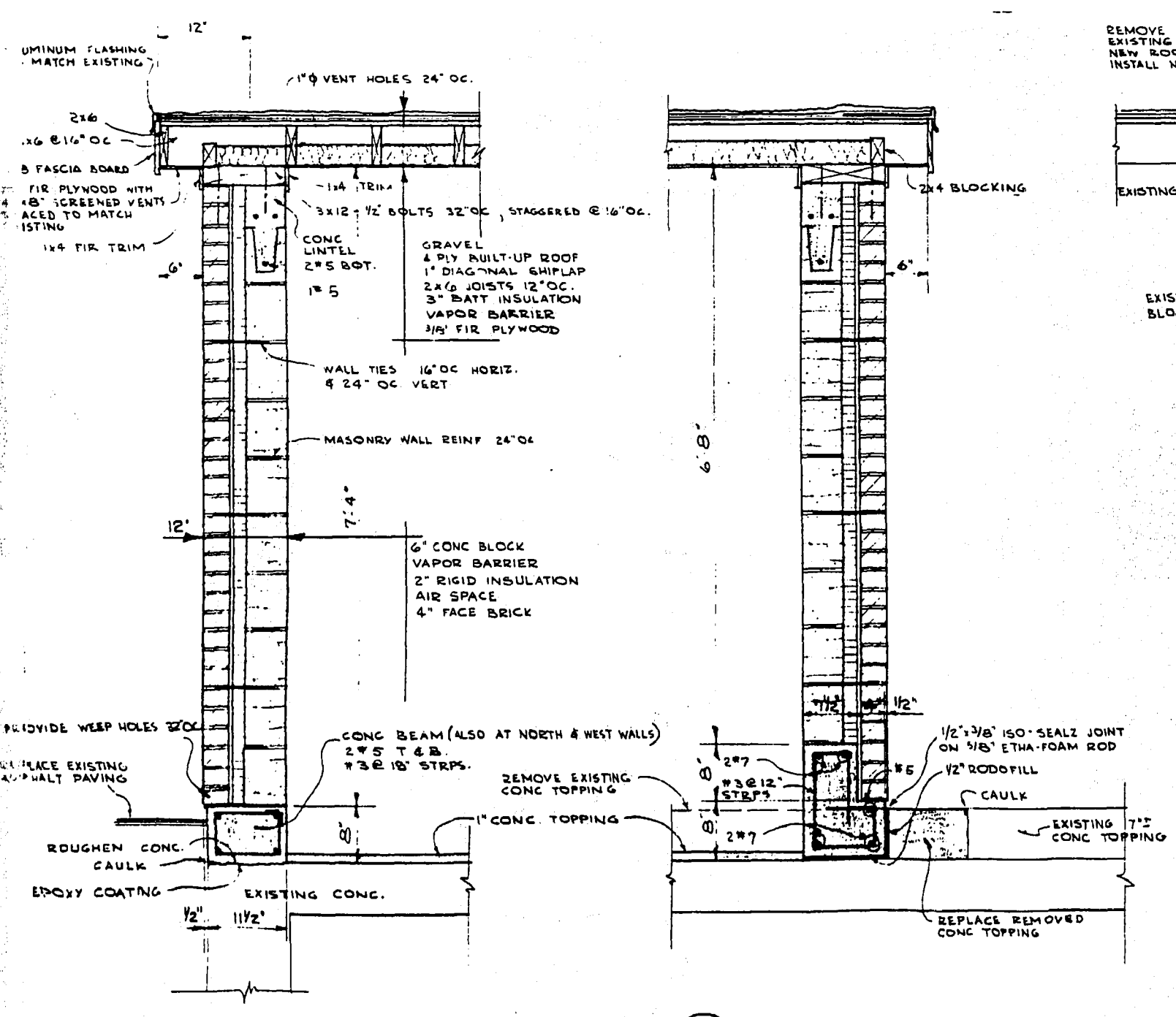


4 HEAD



5 JAMB

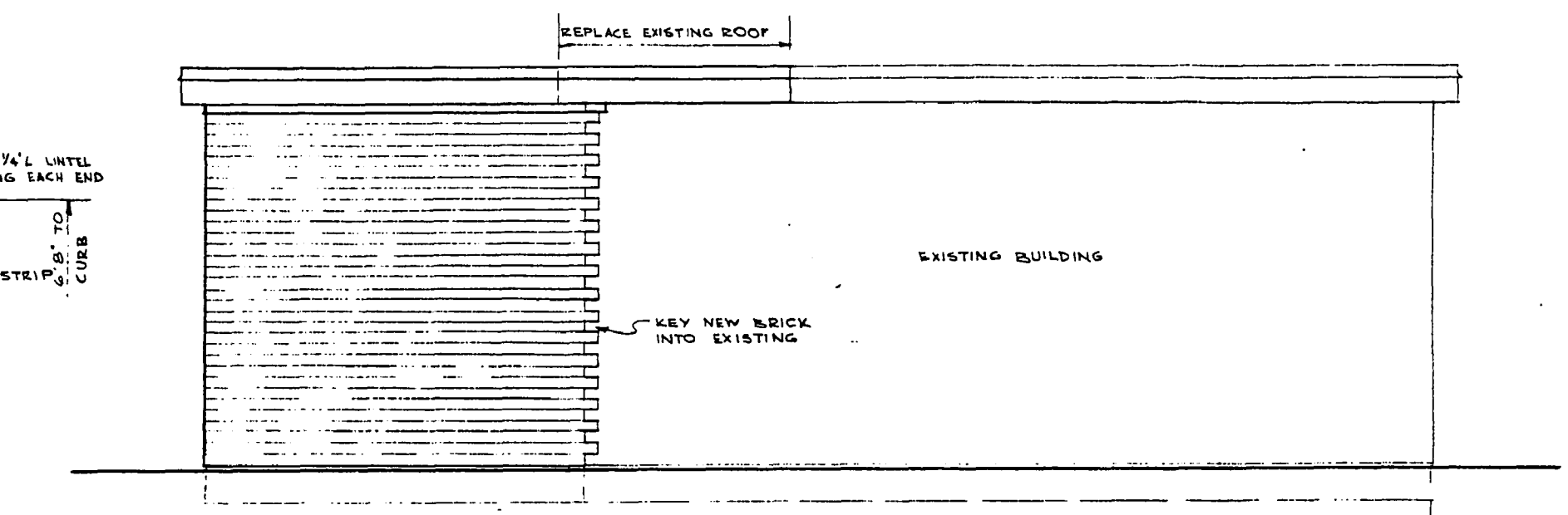
DOOR DETAILS 1 1/2" x 1'



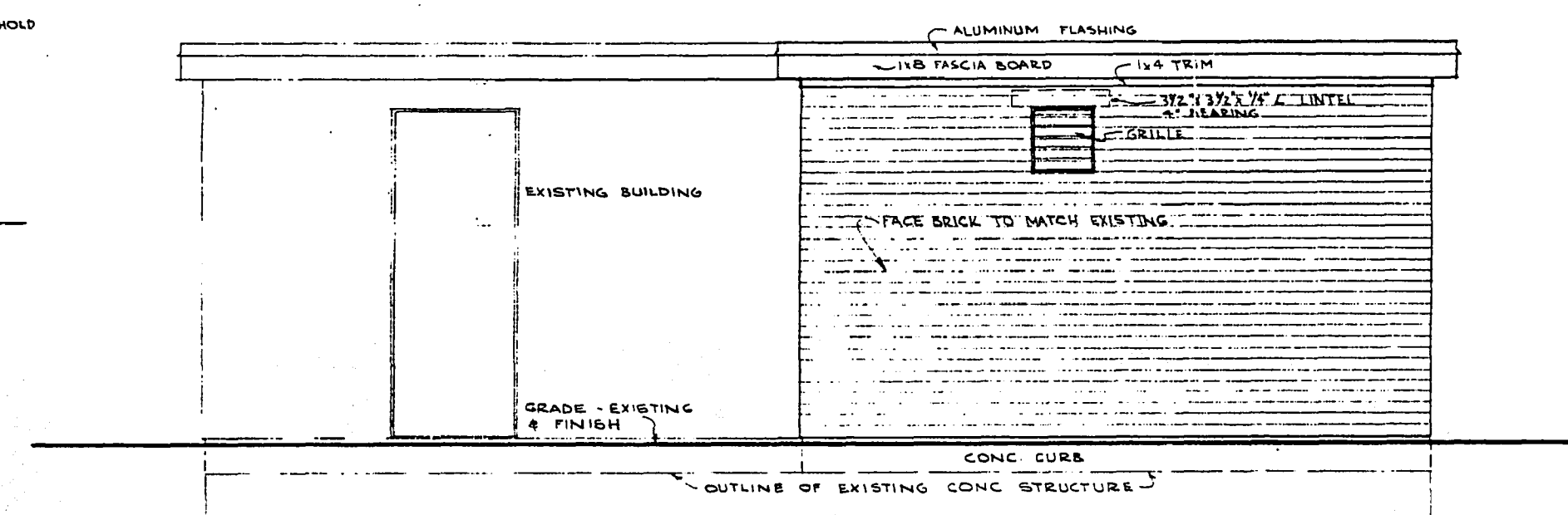
1 SECTION EAST WALL 3/4" x 1'

2 SECTION SOUTH WALL 3/4" x 1'

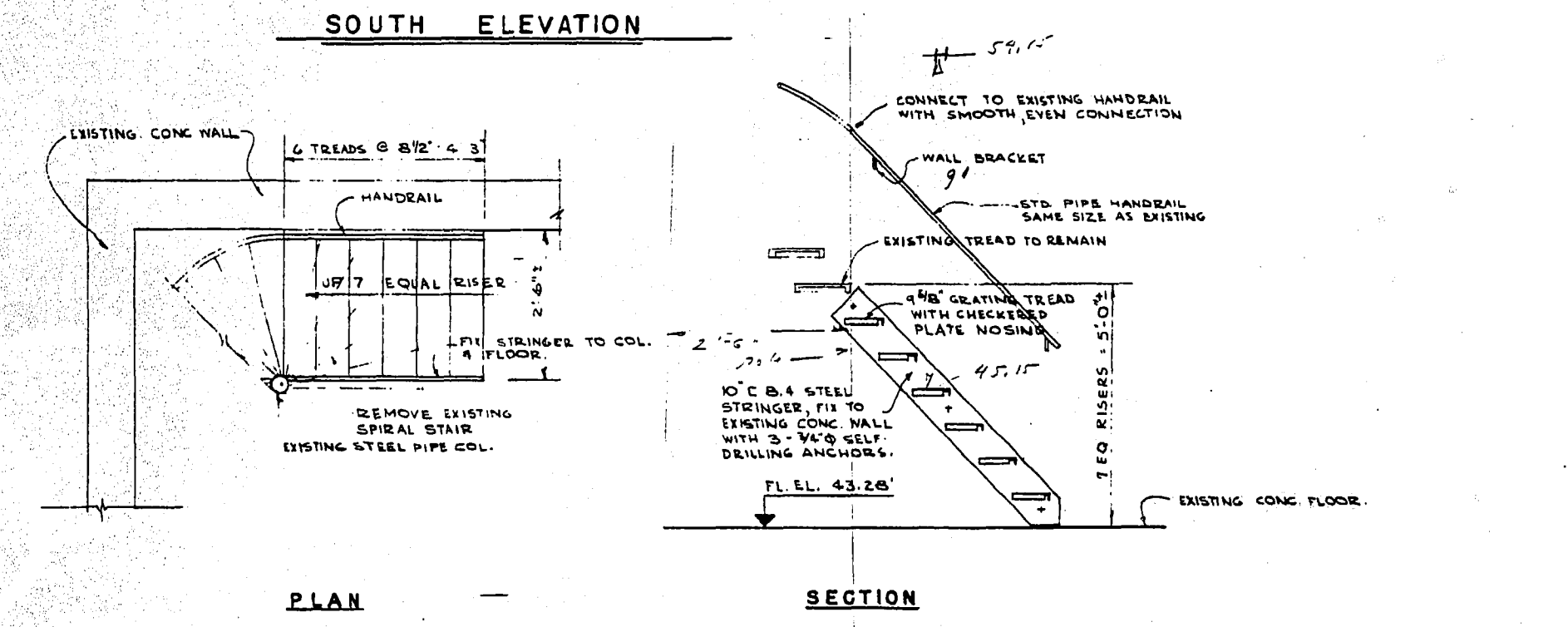
3 SECTION EXISTING WALL 3/4" x 1'



NORTH ELEVATION



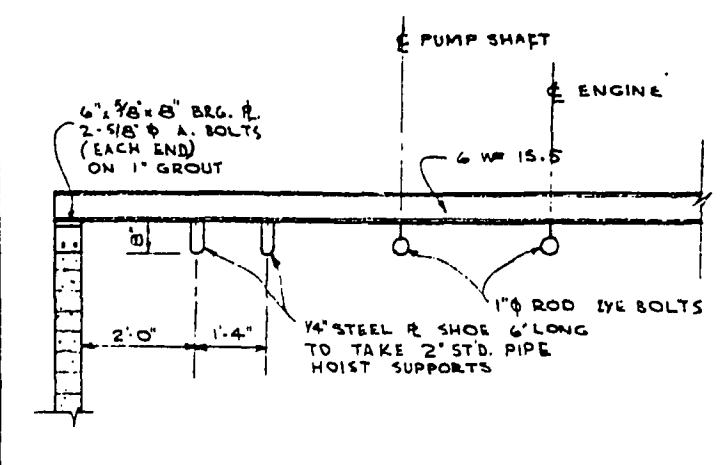
SOUTH ELEVATION



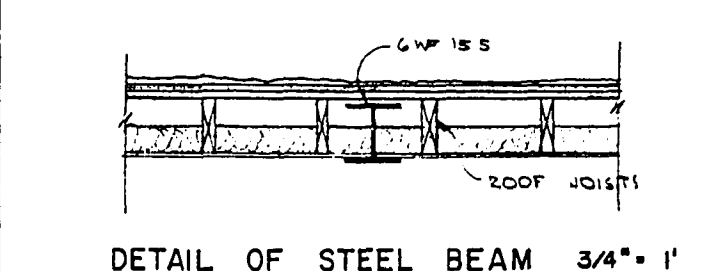
PLAN

SECTION

STAIR MODIFICATIONS AT FLOOR ELEV. 43.28' ALL STEEL SHALL BE GALVANIZED.

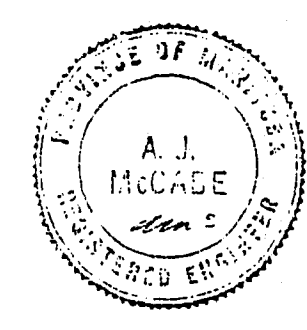


ELEVATION OF STEEL BEAM 3/8" x 1'



DETAIL OF STEEL BEAM 3/4" x 1'

NO.	DESCRIPTION	DATE	DWN.	CKD.
REVISIONS				



APPROVED BY DATE

MUNICIPALITY OF ASSINIBOIA WESTWOOD DR SEWAGE PUMPING STATION

BUILDING PLAN, ELEVATIONS, SECTIONS, DETAILS

UNDERWOOD McLELLAN & ASSOCIATES LIMITED

CONSULTING PROFESSIONAL ENGINEERS MANITOBA SASKATCHEWAN ALBERTA BRITISH COLUMBIA

DRAWN BY J.R.C.	DESIGNED BY
CHECKED BY	CHECKED BY
DATE DRAWN NOV. 25, 1988.	SCALE 3/8" = 1'
JOB NO. 41-02-063-98-01	DRAWING NO.
SHEET 4 OF 6	S-1

file # SP10284 1107