

75# HDPE COMPRESSED AIR LINE (NOTE 6)
200# HDPE LEACHATE LINE (NOTE 6)

1
SHT.24

A
SHT.31

75# HDPE COMPRESSED AIR LINE (NOTE 6)

AIR DRYER, AD-1
AIR FLOW CONTROLLER, FC-1
25# COMPRESSED AIR
1 COMPRESSED AIR SYSTEM ENCLOSURE
PACKAGED AIR COMPRESSOR, AND WET AIR RECEIVER C-1 & AR-1
DRY AIR RECEIVER, AR-2

HEAVY EQUIPMENT MAINTENANCE BUILDING

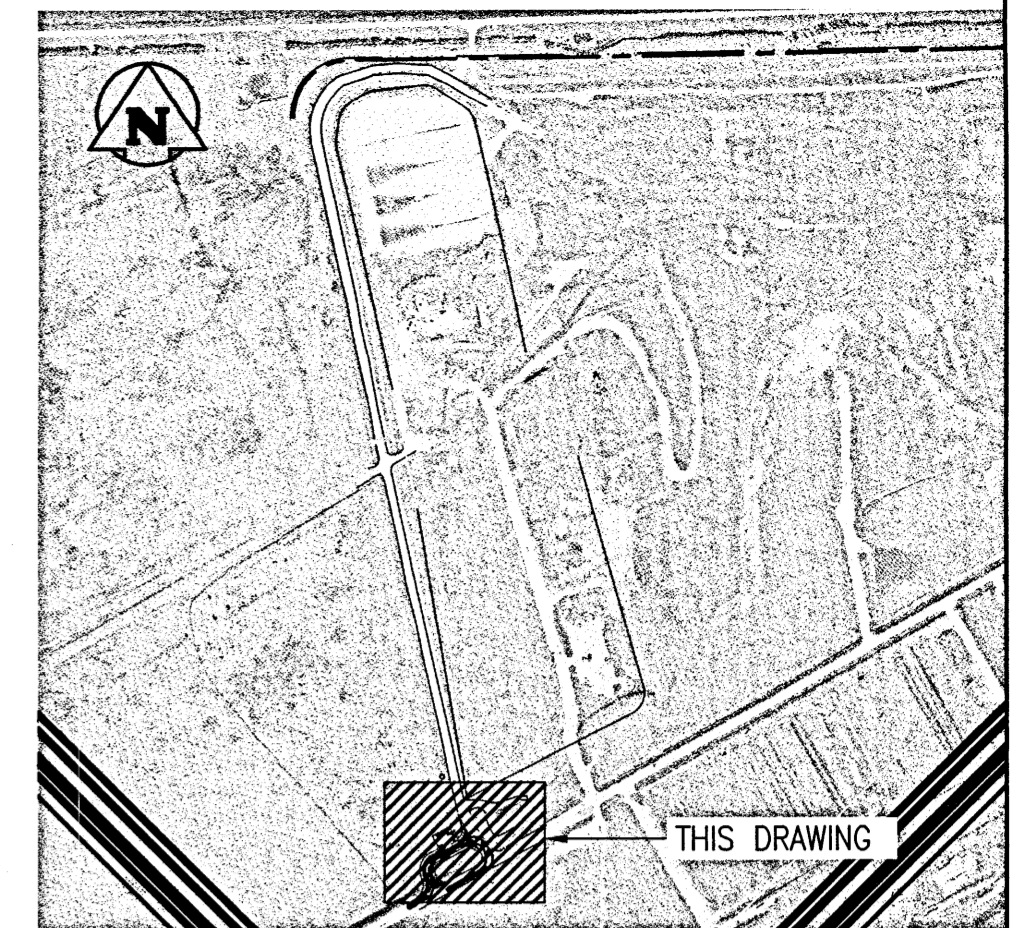
LEACHATE STORAGE TANK, TK-1

MANHOLE MH03

RESIDENTIAL WASTE ACCESS ROAD

LEACHATE SECONDARY CONTAINMENT TANK, TK-2

CHARENTE ROAD



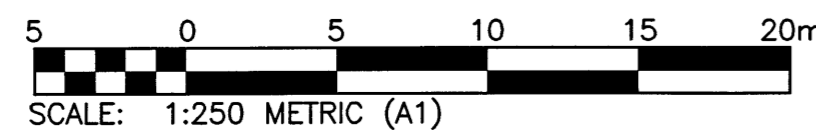
KEYPLAN: N.T.S.

GENERAL NOTES:

1. PERFORM WORK IN ACCORDANCE WITH ALL APPLICABLE CODES AND REGULATIONS.
2. THE CONTRACTOR SHALL REVIEW THE PROJECT DRAWINGS AND SPECIFICATIONS PRIOR TO ANY CONSTRUCTION ON SITE. ANY DISCREPANCIES, MISSING DIMENSION AND/OR REQUIRED DETAILS SHALL BE BROUGHT TO THE ATTENTION OF THE CONTRACT ADMINISTRATOR BEFORE AFFECTED WORK IS COMMENCED. THE CONTRACTOR IS RESPONSIBLE TO OBTAIN ALL REQUIRED INFORMATION PRIOR TO STARTING WORK.
3. THE CONTRACTOR SHALL FIELD CONFIRM LOCATIONS OF ALL PIPING, STRUCTURES AND SERVICES ABOVE OR BELOW GROUND PRIOR TO CONSTRUCTION. THE CONTRACTOR SHALL VERIFY ALL DIMENSIONS AND EQUIPMENT LOCATIONS PRIOR TO CONSTRUCTION AND REPORT DISCREPANCIES PRIOR TO PROCEEDING WITH THE WORK.
4. ALL EXISTING CONSTRUCTION ALTERED OR DAMAGED DURING THE COURSE OF WORK SHALL BE MADE GOOD TO MATCH.
5. THE CONTRACTOR SHALL COORDINATE WITH THE CONTRACT ADMINISTRATOR TO ENSURE THE WORK DOES NOT DISRUPT NORMAL SITE OPERATIONS.
6. REFER TO CIVIL DRAWINGS (SHEETS 3 TO 20) FOR LOCATION DETAILS.

KEYNOTES:

- 1 SUPPLY AND INSTALL NEW SKID MOUNTED COMPRESSED AIR SYSTEM ENCLOSURE INCLUDING, BUT NOT LIMITED TO, AIR COMPRESSOR (C-1), WET AIR RECEIVER (AR-1), AIR DRYER (AD-1), DRY AIR RECEIVER (AR-2) AND FLOW CONTROLLER (FC-1) WITH ALL INTERCONNECTING PIPING AND WIRING WITHIN THE ENCLOSURE.
- 2 SUPPLY AND INSTALL NEW 25# PIPING FROM COMPRESSED AIR ENCLOSURE TO NEW 75# UNDERGROUND COMPRESSED AIR LINE. REFER TO DETAIL F ON SHEET 31 FOR TYPICAL PIPING TRANSITION.



LOCATION APPROVED UNDERGROUND STRUCTURES

SUPV. U/G STRUCTURES COMMITTEE DATE

NOTE:
LOCATION OF UNDERGROUND STRUCTURES AS SHOWN ARE BASED ON THE BEST INFORMATION AVAILABLE BUT NO GUARANTEE IS GIVEN THAT ALL EXISTING UTILITIES ARE SHOWN OR THAT THE GIVEN LOCATIONS ARE EXACT. CONFIRMATION OF EXISTENCE AND EXACT LOCATION OF ALL SERVICES MUST BE OBTAINED FROM THE INDIVIDUAL UTILITIES BEFORE PROCEEDING WITH CONSTRUCTION.

B.M. ELEV.	
CONSTRUCTION COMPLETION DATE: YYYY MM DD	
NO.	REVISIONS
0	ISSUED FOR TENDER
	DATE 06/15/2017 BY ML

KGS GROUP
CONSULTING ENGINEERS & PROJECT MANAGERS
WINNIPEG (204) 896-1209
THUNDER BAY (807) 345-2233

DESIGNED BY MSK	CHECKED BY
DRAWN BY ML	APPROVED BY
SCALE: HORIZONTAL AS NOTED	RELEASED FOR CONSTRUCTION
VERTICAL AS NOTED	DATE 2016 08 17
DATE 2016 08 17	DATE

ENGINEER'S SEAL

CONSULTANT DRAWING NUMBER
15-0107-014_M01

FOR TENDER ONLY
NOT TO BE USED FOR CONSTRUCTION

METRIC
WHOLE NUMBERS INDICATE MILLIMETRES
DECIMALIZED NUMBERS INDICATE METRES

APEGM
Certificate of Authorization
KGS Group
No. 245

THE CITY OF WINNIPEG
WATER AND WASTE DEPARTMENT
ENGINEERING DIVISION
BRADY ROAD RESOURCE MANAGEMENT FACILITY (BRRMF)
DISPOSAL CELL CONSTRUCTION AND
LEACHATE COLLECTION AND STORAGE (300,000 LITRE) TANK
MECHANICAL
PARTIAL SITE PLAN
SHEET 22 OF 44
CITY DRAWING NUMBER
1-0400A-M0004-001