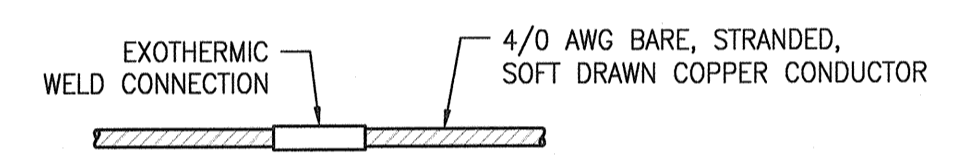
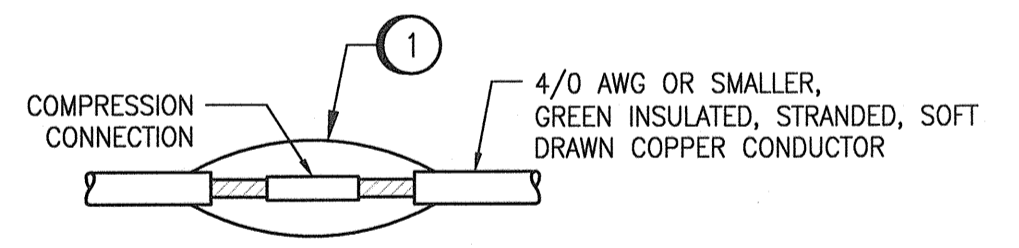


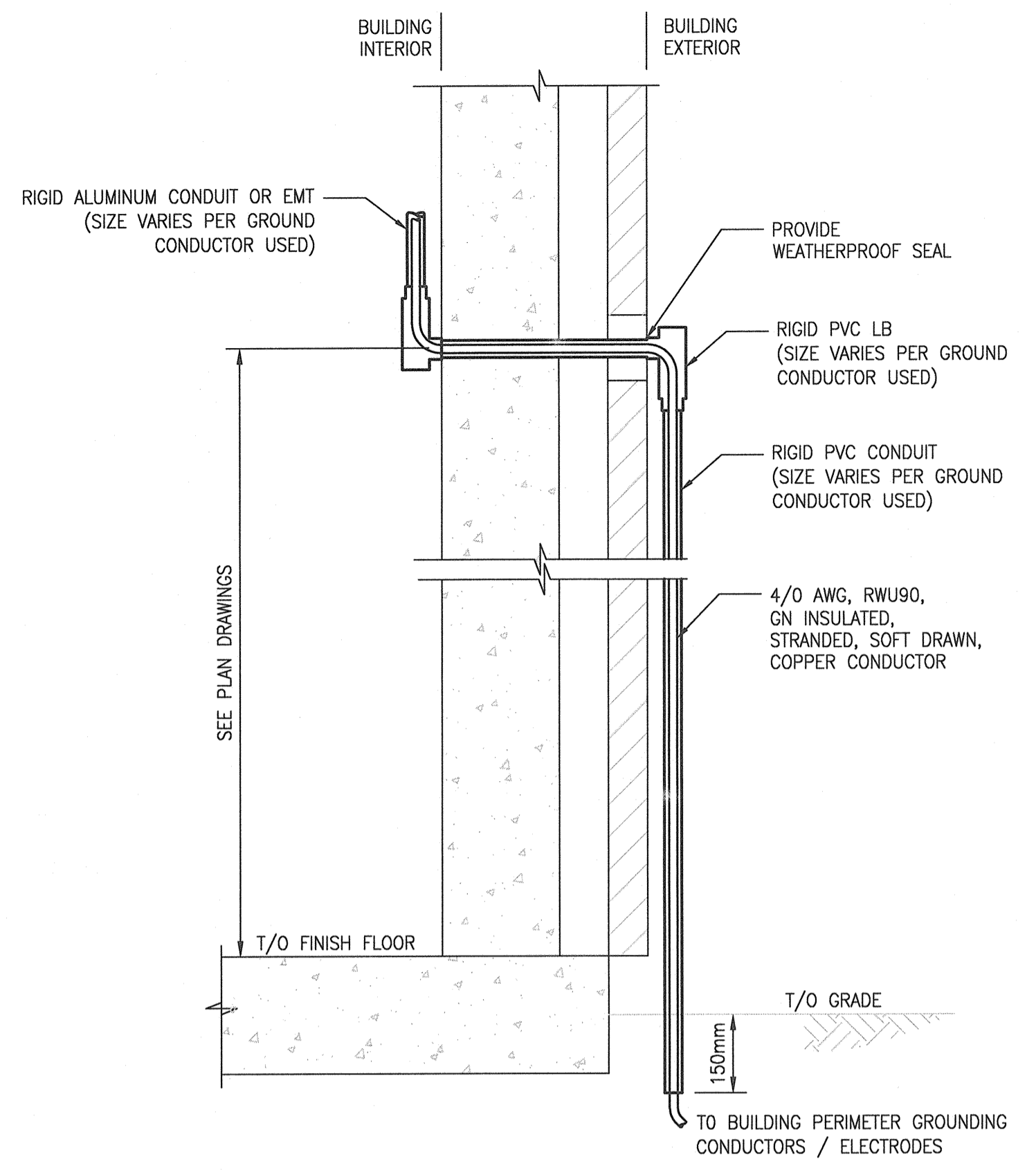
A GROUND ROD WITH GROUND WELL
SCALE: NTS



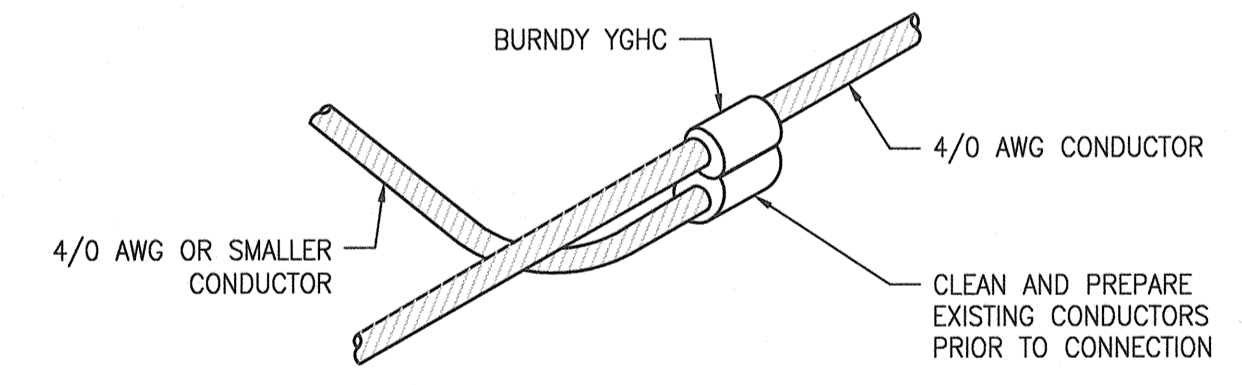
C GROUND CONDUCTOR SPLICE (BURIED)
SCALE: NTS



D GROUND CONDUCTOR SPLICE (INDOORS)
SCALE: NTS



B TYPICAL BUILDING ENTRY ABOVE GROUND
SCALE: NTS



E PARALLEL CONDUCTOR CONNECTION
SCALE: NTS

1-0660M-E0016	ELECTRICAL SITE PLAN
DRAWING NUMBER	REFERENCE DRAWINGS



NO.	REVISIONS	DATE	DESIGN	CHECK
00	ISSUED FOR TENDER AND CONSTRUCTION	2019/10/18	SB	BC

SNC-LAVALIN INC. 148 Nature Park Way Winnipeg, MB, Canada R3P 0X7 204-786-8080	
DESIGNED BY: S. BOGHOSIAN	CHECKED BY: B. CLEVEN
DRAWN BY: Y. KONIG	APPROVED BY: D. BECKER
SCALE: NTS	ISSUED FOR CONSTRUCTION BY: A. WEISS
DATE: 2019/05/06	DATE: 2019/10/18
CONSULTANT NO.:	



THE CITY OF WINNIPEG WATER AND WASTE DEPARTMENT			
TACHE BOOSTER PUMPING STATION GROUNDING INSTALLATION DETAILS			
CITY DRAWING NUMBER 1-0660M-E0018	SHEET 001	REV. 00	SIZE A1