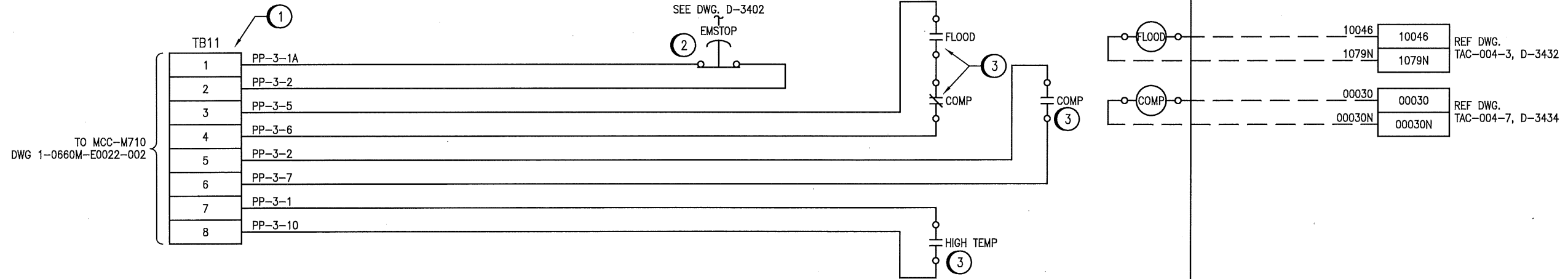


B SIZE - 279mm x 432mm

General DWG\02 Tache\1-0660M-A0008-001-00.dwg

LCP-3

MAIN CONTROL PANEL



CONSTRUCTION NOTES:

- ① PROVIDE AND INSTALL FEED THROUGH TERMINALS AND REQUIRED ACCESSORIES TO MODIFY LCP-3 PANEL AS SHOWN.
- ② REWIRE EMSTOP SWITCH AS SHOWN. REFER TO DWG. 1-0660M-E0022.
- ③ REWIRE FLOOD, COMP AND HIGH TEMP CONTACTS AS SHOWN. REFER TO DWG. 1-0660M-E0022.

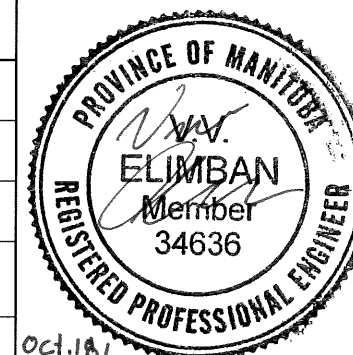
LAST SAVE: 2019/10/29 - 7:22am  
 PATH: M:\661472\4ENG\48IC\DD -



SNC-LAVALIN INC.  
 148 Nature Park Way  
 Winnipeg, MB, Canada R3P 0X7  
 204-786-8080

|                              |                           |
|------------------------------|---------------------------|
| DESIGNED BY:<br>S. BOGHOSIAN | CHECKED BY:<br>B. CLEVEN  |
| DRAWN BY:<br>J. GRAGASIN     | APPROVED BY:<br>D. BECKER |
| SCALE:<br>NTS                | DATE:<br>2019/09/24       |
| ISSUED FOR CONSTRUCTION      |                           |
| BY:<br>A. WEISS              | DATE:<br>2019/10/18       |
| CONSULTANT NO.:              |                           |

ENGINEER'S SEAL



Oct. 18/2019



THE CITY OF WINNIPEG  
 WATER AND WASTE DEPARTMENT

TACHE BOOSTER PUMPING STATION

LOOP DIAGRAM  
 LCP-3  
 PP-3 ELECTRICAL PUMP DRIVE

| NO. | REVISIONS                          | DATE       | DESIGN | CHECK |
|-----|------------------------------------|------------|--------|-------|
| 00  | ISSUED FOR TENDER AND CONSTRUCTION | 2019/10/18 | SB     | BC    |

|                     |       |      |      |
|---------------------|-------|------|------|
| CITY DRAWING NUMBER | SHEET | REV. | SIZE |
| 1-0660M-A0008       | 001   | 00   | B    |