



THE CITY OF WINNIPEG
WATER AND WASTE DEPARTMENT
ENGINEERING DIVISION
JEFFERSON EAST
COMBINED SEWER RELIEF
CONTRACT 5 – SEMPLE TRUNK SEWER

TENDER 1045-2019B



KEY MAP

LEGEND

PLAN VIEW

DESCRIPTION	EXISTING	PROPOSED
WATER PIPE	—	—
FIRE HYDRANT	⊕	⊕
VALVE	⊗	⊗
CURB STOP	⊙	⊙
REDUCER	◁	◁
COUPLING OR SLIDDER	X	X
CROSS	⊕	⊕
BEND - 11.25', 22.5', 45', 90'	⋈	⋈
TEE	⋈	⋈
VERTICAL BEND	⋈	⋈
ANODE	⊕	⊕
REPAIR MARKER	⊕	⊕
PLUG	⊕	⊕
SEWER PIPE	—	—
MANHOLE	⊕	⊕
CATCH BASIN	⊕	⊕
CURB INLET	▽	▽
JUNCTION	⋈	⋈
€ DITCH	—	—
CULVERT	—	—
SURVEY BAR	⊕	⊕
SURVEY MONUMENT	⊕	⊕
TREE - DECIDUOUS	⊕	⊕
TREE - CONIFEROUS	⊕	⊕
HYDRO	—	—
HYDRO POLE	⊕	⊕
LAMP STANDARD	⊕	⊕
HYDRO POLE W/STREET LIGHTING	⊕	⊕
POLE	⊕	⊕
GUY ANCHOR	⊕	⊕
M.T.S. POLE	⊕	⊕
PEDESTAL OR BOX	⊕	⊕
CABINET	⊕	⊕
M.T.S., SHAW, OR VIDEO	⊕	⊕
TRAFFIC SIGNALS	⊕	⊕
TRAFFIC LIGHT STANDARD	⊕	⊕
GAS	—	—
STEAM	—	—
FIBRE OPTIC	—	—
FENCE	—	—
EDGE OF PAVEMENT OR GUTTER	—	—
EDGE UNPAVED OR GRAVEL ROAD	—	—
€	—	—
PROJECTED €	—	—
LOT LINE	—	—
SIDEWALK - PATHWAY	—	—
EASEMENT	—	—
EDGE OF BUILDING	—	—
MAILBOX	⊕	⊕
PARKING METER	⊕	⊕
TEST HOLE	⊕	⊕
TREE LINE OR BUSH	—	—

PROFILE

DESCRIPTION	EXISTING	PROPOSED
WATER PIPE	—	—
HYDRANT TOP	+	+
VALVE	X	X
TEE OR CROSS	⋈	⋈
COUPLING OR BEND	⋈	⋈
REDUCER	⋈	⋈
END OF PIPE	⋈	⋈
SEWER PIPE	—	—
UNPAVED GROUND SURFACE	—	—
PAVED GROUND SURFACE - € PIPE	—	—
GUTTER (NORTH AND WEST)	—	—
GUTTER (SOUTH AND EAST)	—	—
€ DITCH (NORTH AND WEST)	—	—
€ DITCH (SOUTH AND EAST)	—	—
STRUCTURE	—	—
MANHOLE OR CATCH BASIN	—	—

ABBREVIATIONS

WWS	WASTE WATER SEWER
CS	COMBINED SEWER
LDS	LAND DRAINAGE SEWER
R	PROPERTY LINE
€	CENTER LINE
G.I.S.	GEOGRAPHIC INFORMATION SYSTEM
B.M.	BENCH MARK
TH	TEST HOLE
ELEV	ELEVATION
INV	INVERT
MIN	MINIMUM
MAX	MAXIMUM
SL	STREET LIGHTING
TS	TRAFFIC SIGNALS
ABAND	ABANDONED
BLDG	BUILDING
HSE	HOUSE
CRN	CORNER
OPP	OPPOSITE
C/S OR S/C	CURB STOP
MTS	MANITOBA TELEPHONE SYSTEM
R.O.W.	RIGHT-OF-WAY
WM	WATERMAIN
CULV	CULVERT
MH	MANHOLE
CB	CATCH BASIN
CI	CURB INLET
VERT.	VERTICAL
HORZ.	HORIZONTAL
I.B.	IRON BAR
FIBRE	FIBRE OPTIC
TYP	TYPICAL
X-ING	CROSSING
HYD	HYDRANT
EXIST	EXISTING
N	NORTH
E	EAST
S	SOUTH
W	WEST
W/	WITH
C/W	CONSTRUCTED WITH
CONC	CONCRETE
AC	ASBESTOS CEMENT
VC OR CLAY	VITRIFIED CLAY
CI	CAST IRON
DI	DUCTILE IRON
PVC	POLYVINYL CHLORIDE
HDPE	HIGH DENSITY POLYETHYLENE
PCCP	PRESTRESSED CONCRETE CYLINDER PIPE

DRAWING INDEX

SHEET NUMBER	CITY OF WINNIPEG DRAWING NUMBER	DRAWING TITLE
1	LD-???????	COVER
2	LD-???????	DRAWING INDEX, DESIGN NOTES, LEGEND, & ABBREVIATIONS
3	LD-???????	GENERAL PLAN
4	LD-???????	McKENZIE STREET LAYDOWN AREA
5	LD-???????	ANDREWS STREET LAYDOWN AREA
6	LD-???????	AIKINS STREET LAYDOWN AREA
7	LD-???????	SCOTIA STREET LAYDOWN AREA
8	LD-???????	SEMPLER STREET - C.P.R. WINNIPEG BEACH SUBDIVISION R.O.W. TO 170m WEST OF McGREGOR STREET
9	LD-???????	SEMPLER STREET - 9m EAST OF McKENZIE STREET TO 71m WEST OF McGREGOR STREET
10	LD-???????	SEMPLER STREET - 108m EAST OF McKENZIE STREET TO 147m WEST OF ANDREWS STREET
11	LD-???????	SEMPLER STREET - 34m EAST OF McGREGOR STREET TO 22m WEST OF ANDREWS STREET
12	LD-???????	SEMPLER STREET - 160m EAST OF McGREGOR STREET TO 99m WEST OF POWERS STREET
13	LD-???????	SEMPLER STREET - 83m EAST OF ANDREWS STREET TO 175m WEST OF SALTER STREET
14	LD-???????	SEMPLER STREET - 6m EAST OF POWERS STREET TO 70m WEST OF SALTER STREET
15	LD-???????	SEMPLER STREET - 111m EAST OF POWERS STREET TO 147m WEST OF AIKINS STREET
16	LD-???????	SEMPLER STREET - 31m EAST OF SALTER STREET TO 27m WEST OF AIKINS STREET
17	LD-???????	SEMPLER STREET - 151m EAST OF SALTER STREET TO 123m WEST OF MAIN STREET
18	LD-???????	SEMPLER STREET - 78m EAST OF AIKINS STREET TO 13m WEST OF MAIN STREET
19	LD-???????	SEMPLER STREET - 188m EAST OF AIKINS STREET TO 213m WEST OF SCOTIA STREET
20	LD-???????	SEMPLER STREET - 62m EAST OF MAIN STREET TO 88m WEST OF SCOTIA STREET
21	LD-???????	SEMPLER STREET - 187m EAST OF MAIN STREET TO SCOTIA STREET
22	LD-???????	McKENZIE STREET - KILBRIDE AVENUE TO SEMPLER AVENUE

CONSTRUCTION NOTES

1. ALL PIPE SHALL HAVE CLASS B - TYPE 2 BEDDING
2. INSTALL SEWER BY TRENCHLESS METHODS.
3. CONFIRM THE LOCATION OF ALL SEWER SERVICES.
4. BACKFILL UNDER PAVEMENT, IN SIDEWALKS, & WITHIN 1.0 OF PAVEMENT TO BE CLASS 3.
5. BACKFILL IN BOULEVARD TO BE CLASS 5.
6. RENEW SEWER SERVICES TO €.
7. INSTALL SEWER SERVICE RISERS TO ELEVATION WHERE MINIMUM SLOPE OF 1% IS MAINTAINED FOR ALL SERVICES.

HATCH PATTERNS

EXISTING	PROPOSED	DESCRIPTION
		EARTH OR GROUND ABOVE PIPE
		SAND OR OTHER FINE MATERIAL
		CONCRETE
		WASHED STONE OR GRANULAR MATERIAL
		INTERLOCKING STONE
		METAL
		GRAVEL OR STONE

PRELIMINARY
NOT FOR CONSTRUCTION

ENGINEERS GEOSCIENTISTS MANITOBA
Certificate of Authorization
AECOM Canada Ltd.
No. 4671 Date: _____

LOCATION APPROVED UNDERGROUND STRUCTURES		B.M. ELEV.
SUPV. U/G STRUCTURES COMMITTEE	DATE	
NOTE: LOCATION OF UNDERGROUND STRUCTURES AS SHOWN ARE BASED ON THE BEST INFORMATION AVAILABLE BUT NO GUARANTEE IS GIVEN THAT ALL EXISTING UTILITIES ARE SHOWN OR THAT THE GIVEN LOCATIONS ARE EXACT. CONFIRMATION OF EXISTENCE AND EXACT LOCATION OF ALL SERVICES MUST BE OBTAINED FROM THE INDIVIDUAL UTILITIES BEFORE PROCEEDING WITH CONSTRUCTION.		
A	ISSUED FOR RFQ	15/10/19 KLC
NO.	REVISIONS	DATE BY

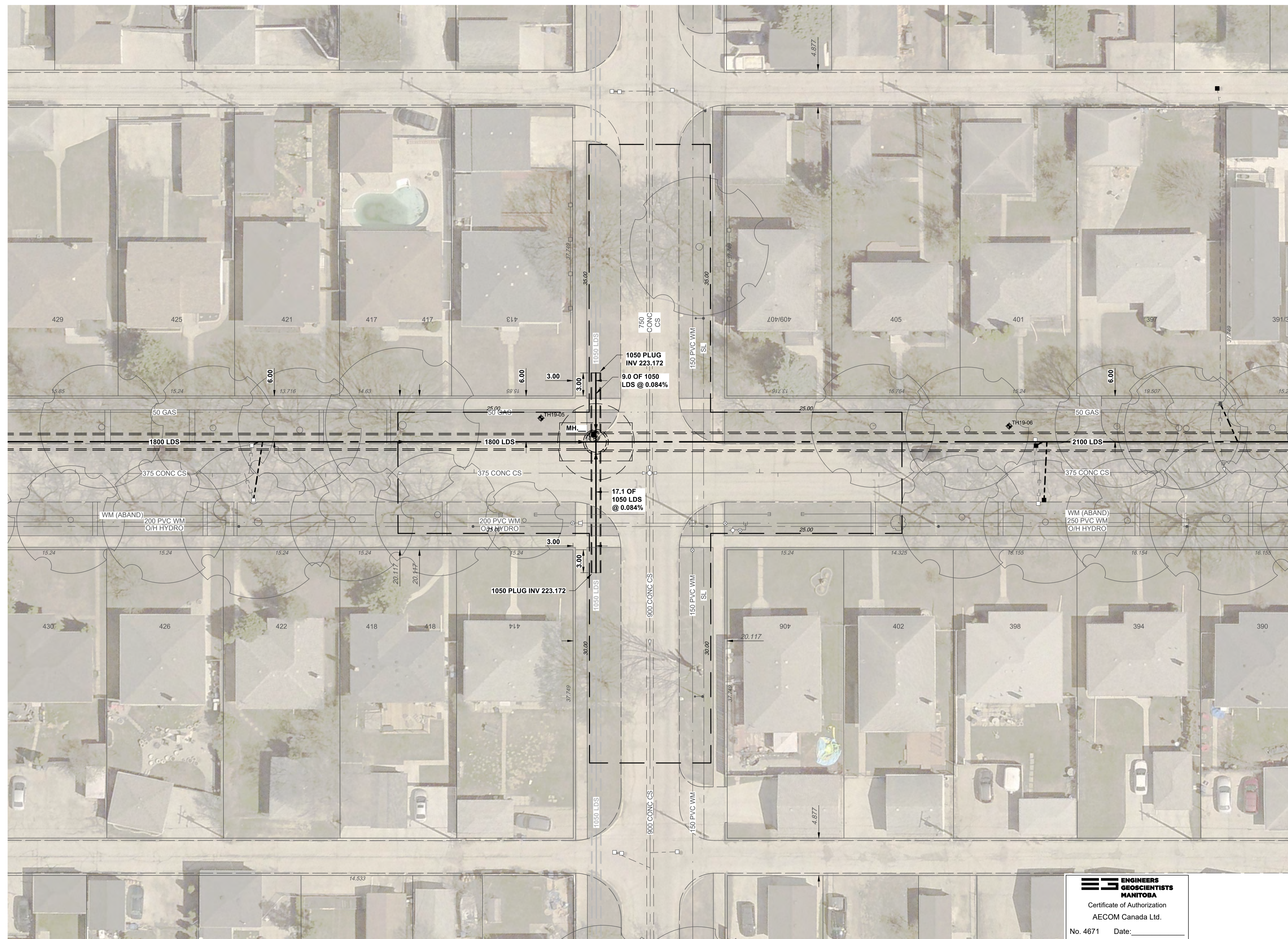
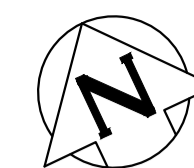
AECOM	
DESIGNED BY: JAT	CHECKED BY:
DRAWN BY: ADL	APPROVED BY:
SCALE: HORIZONTAL N/A	RELEASED FOR CONSTRUCTION
VERTICAL	DATE: 2019 10 15

ENGINEER'S SEAL
CONSULTANT DRAWING NUMBER: G-1001

THE CITY OF WINNIPEG
WATER AND WASTE DEPARTMENT
ENGINEERING DIVISION

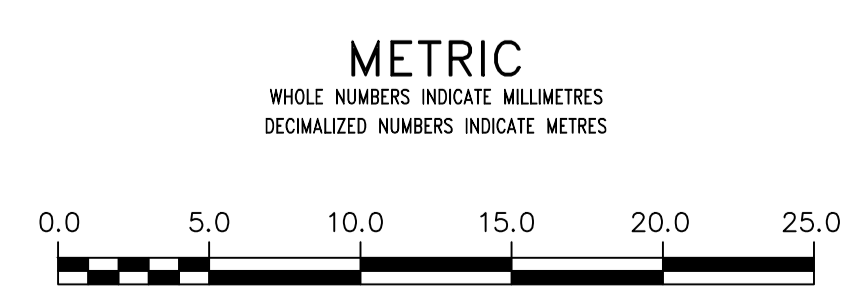
JEFFERSON EAST
COMBINED SEWER RELIEF
CONTRACT 5 - SEMPLE TRUNK SEWER
INDEX PAGE

SHEET 2 OF 22
CITY DRAWING NUMBER
02



**ENGINEERS
GEOSCIENTISTS
MANITOBA**
Certificate of Authorization
AECOM Canada Ltd.
No. 4671 Date: _____

PRELIMINARY
NOT FOR CONSTRUCTION



WARNING
IF POWER EQUIPMENT OR EXPLOSIVES ARE TO BE USED FOR EXCAVATION ON THIS PROJECT THE CONTRACTOR MUST:
1) NOTIFY THE GAS COMPANY OF THE PROPOSED LOCATION OF EXCAVATION.
2) TAKE PRECAUTION TO AVOID DAMAGE TO GAS COMPANY INSTALLATIONS.
SEE PROVINCIAL REGULATION 210/72 FOR DETAILS

LOCATION APPROVED
UNDERGROUND STRUCTURES

SUPV. U/G STRUCTURES COMMITTEE DATE _____

NOTE:
LOCATION OF UNDERGROUND STRUCTURES AS SHOWN ARE BASED ON THE BEST INFORMATION AVAILABLE BUT NO GUARANTEE IS GIVEN THAT ALL EXISTING UTILITIES ARE SHOWN OR THAT THE GIVEN LOCATIONS ARE EXACT. CONFIRMATION OF EXISTENCE AND EXACT LOCATION OF ALL SERVICES MUST BE OBTAINED FROM THE INDIVIDUAL UTILITIES BEFORE PROCEEDING WITH CONSTRUCTION.

B.M. ELEV. _____

CONSTRUCTION COMPLETION DATE: YYYY MM DD

NO.	REVISIONS	DATE	BY
A	ISSUED FOR RFQ	15/10/19	KLC

AECOM

DESIGNED BY	JAT	CHECKED BY	
DRAWN BY	ADL	APPROVED BY	
SCALE:		RELEASED FOR CONSTRUCTION	
HORIZONTAL	1:250	DATE	2019 10 15
VERTICAL	N/A	DATE	

PLOT DATE: 2019 10 15

ENGINEER'S SEAL

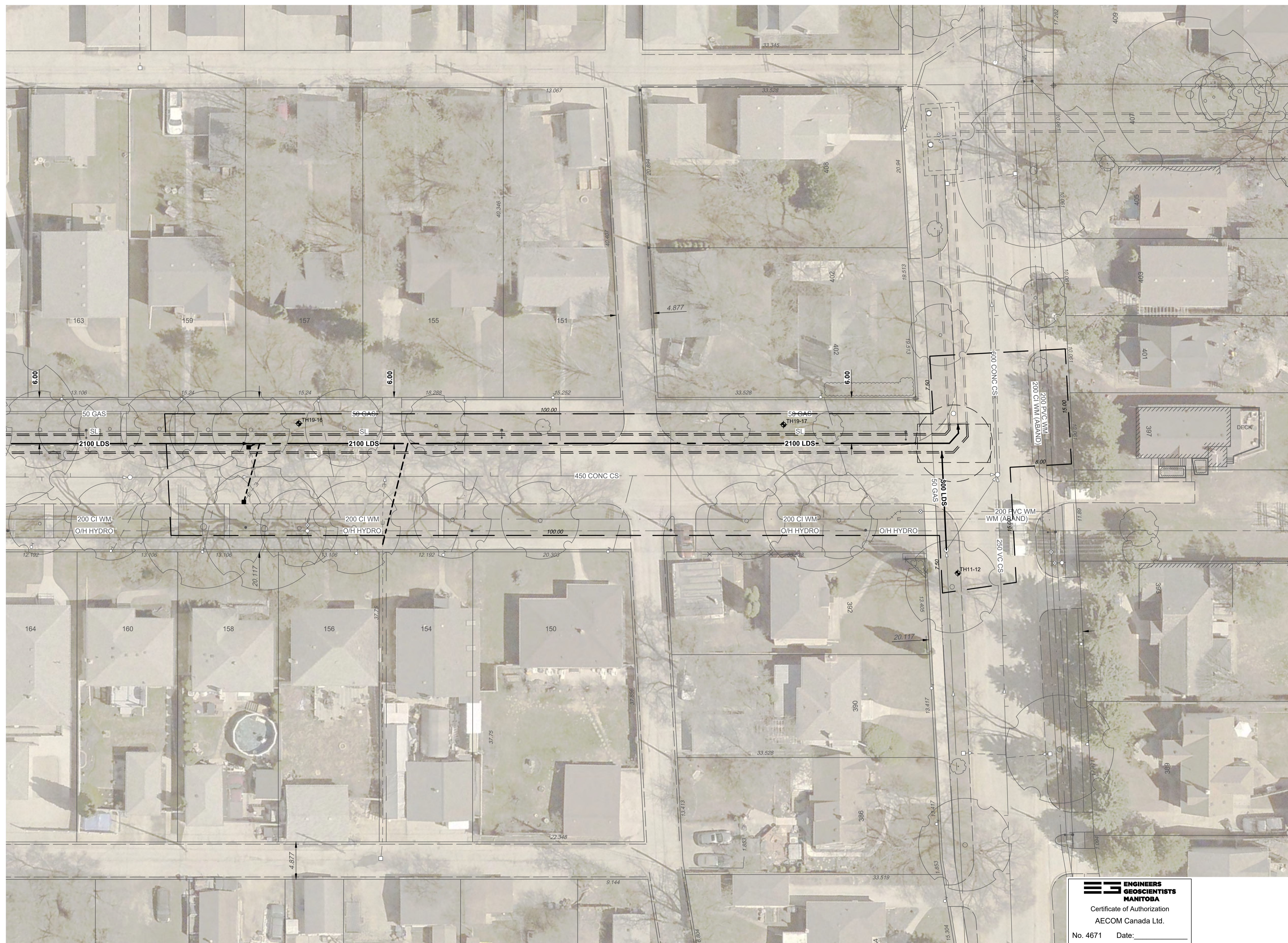
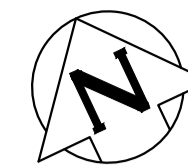
CONSULTANT DRAWING NUMBER
C-1003

Winnipeg

THE CITY OF WINNIPEG
WATER AND WASTE DEPARTMENT
ENGINEERING DIVISION

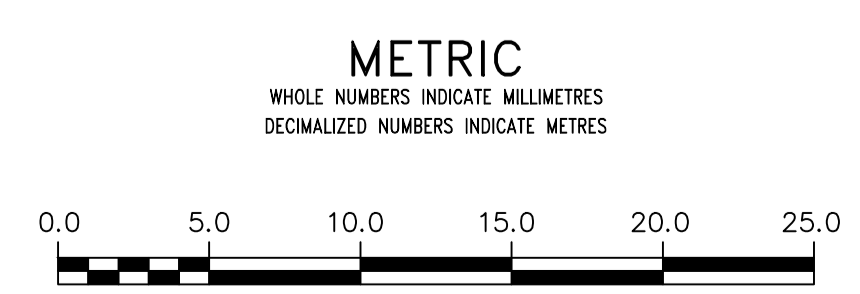
JEFFERSON EAST
COMBINED SEWER RELIEF
CONTRACT 5 - SIMPLE TRUNK SEWER
ANDREWS STREET
LAYDOWN AREA

SHEET 5 OF 22
CITY DRAWING NUMBER
05



**ENGINEERS
GEOSCIENTISTS
MANITOBA**
Certificate of Authorization
AECOM Canada Ltd.
No. 4671 Date: _____

PRELIMINARY
NOT FOR CONSTRUCTION



WARNING
IF POWER EQUIPMENT OR EXPLOSIVES ARE TO BE USED FOR EXCAVATION ON THIS PROJECT THE CONTRACTOR MUST:
1) NOTIFY THE GAS COMPANY OF THE PROPOSED LOCATION OF EXCAVATION.
2) TAKE PRECAUTION TO AVOID DAMAGE TO GAS COMPANY INSTALLATIONS.
SEE PROVINCIAL REGULATION 21072 FOR DETAILS

LOCATION APPROVED UNDERGROUND STRUCTURES
SUPV. U/G STRUCTURES COMMITTEE DATE _____
NOTE:
LOCATION OF UNDERGROUND STRUCTURES AS SHOWN ARE BASED ON THE BEST INFORMATION AVAILABLE BUT NO GUARANTEE IS GIVEN THAT ALL EXISTING UTILITIES ARE SHOWN OR THAT THE GIVEN LOCATIONS ARE EXACT. CONFIRMATION OF EXISTENCE AND EXACT LOCATION OF ALL SERVICES MUST BE OBTAINED FROM THE INDIVIDUAL UTILITIES BEFORE PROCEEDING WITH CONSTRUCTION.

B.M. ELEV. _____
CONSTRUCTION COMPLETION DATE: YYYY MM DD

NO.	REVISIONS	DATE	BY
A	ISSUED FOR RFQ	15/10/19	KLC

AECOM

DESIGNED BY	JAT	CHECKED BY	
DRAWN BY	ADL	APPROVED BY	
SCALE:	1:250	RELEASED FOR CONSTRUCTION	
HORIZONTAL			
VERTICAL	N/A		
DATE	2019 10 15	DATE	

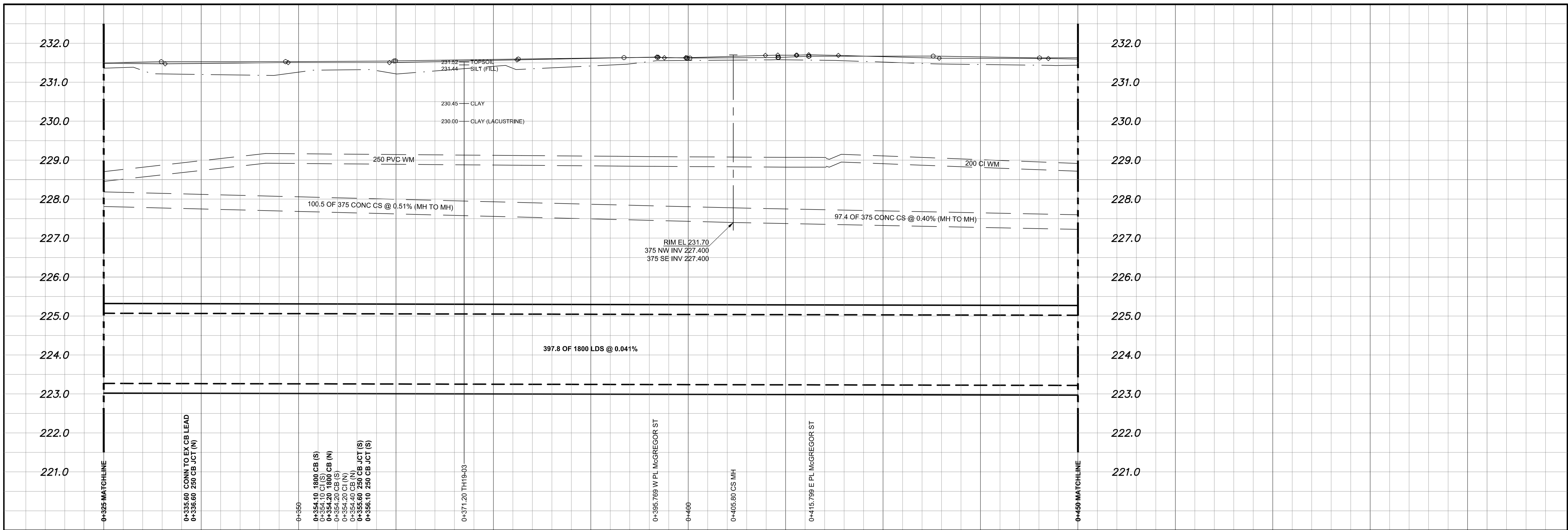
PLOT DATE: 2019 10 15

ENGINEER'S SEAL
CONSULTANT DRAWING NUMBER
C-1005

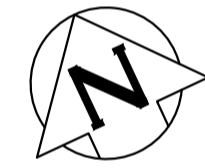
Winnipeg THE CITY OF WINNIPEG
WATER AND WASTE DEPARTMENT
ENGINEERING DIVISION

JEFFERSON EAST
COMBINED SEWER RELIEF
CONTRACT 5 - SAMPLE TRUNK SEWER
SCOTIA STREET
LAYDOWN AREA

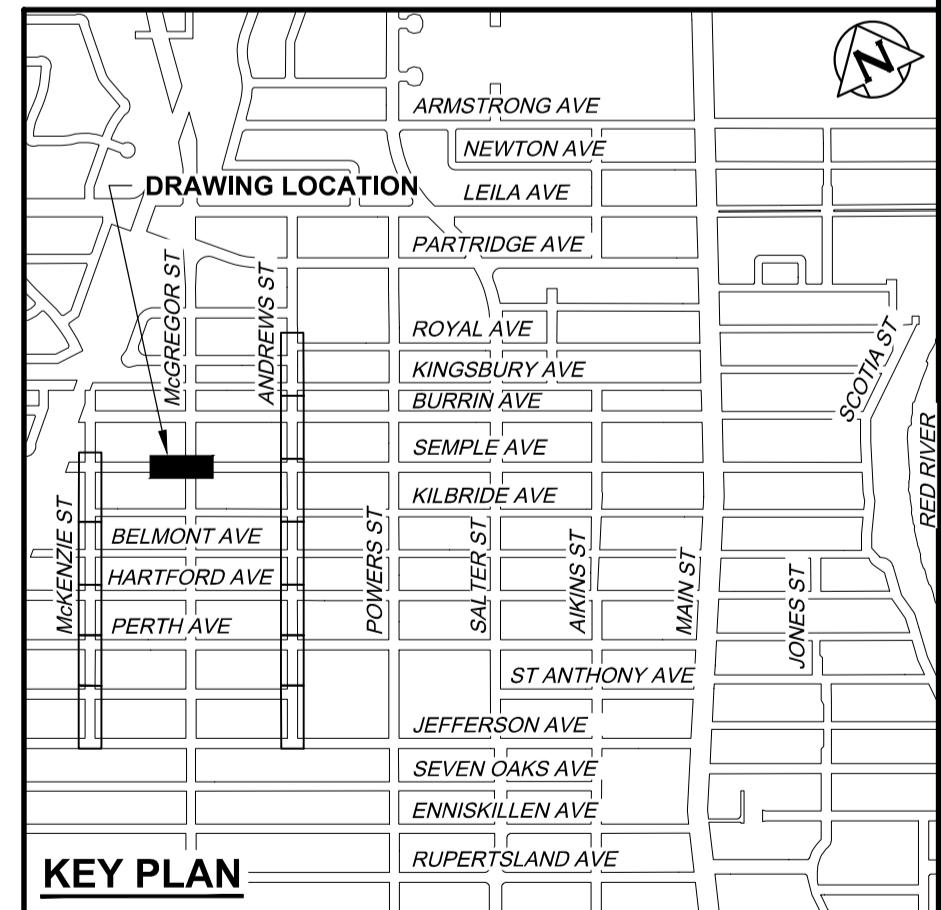
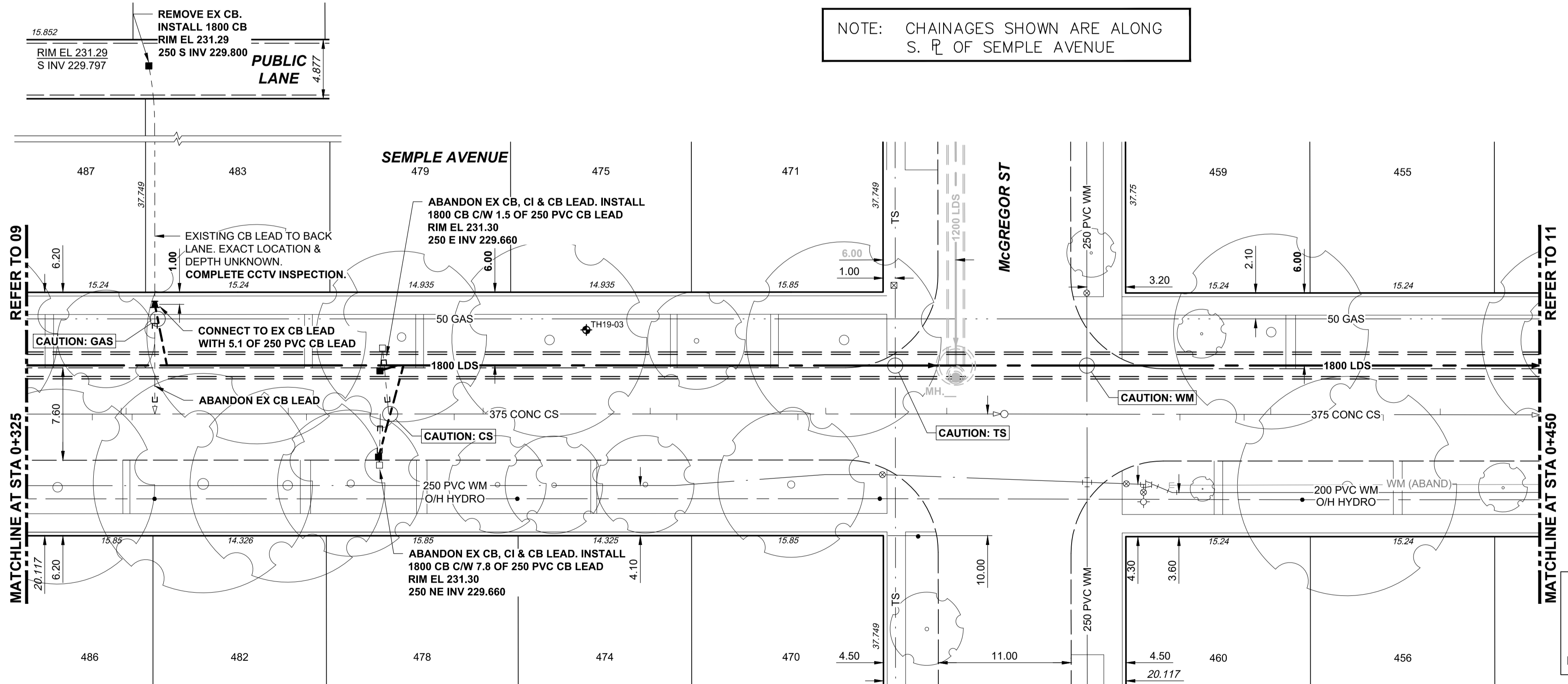
SHEET 7 OF 22
CITY DRAWING NUMBER
07



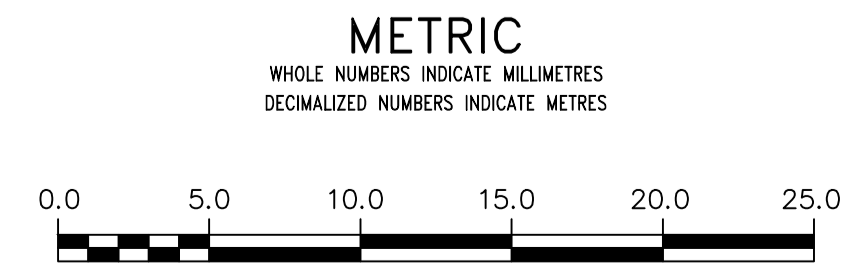
NOTE: CHAINAGES SHOWN ARE ALONG S. R. OF SEMPLE AVENUE



PRELIMINARY
NOT FOR CONSTRUCTION



ENGINEERS
GEOSCIENTISTS
MANITOBA
Certificate of Authorization
AECOM Canada Ltd.
No. 4671 Date: _____



WARNING
IF POWER EQUIPMENT OR EXPLOSIVES ARE TO BE USED FOR EXCAVATION ON THIS PROJECT THE CONTRACTOR MUST:
1) NOTIFY THE GAS COMPANY OF THE PROPOSED LOCATION OF EXCAVATION.
2) TAKE PRECAUTION TO AVOID DAMAGE TO GAS COMPANY INSTALLATIONS.
SEE PROVINCIAL REGULATION 210/72 FOR DETAILS

LOCATION APPROVED
UNDERGROUND STRUCTURES
SUPV. U/G STRUCTURES COMMITTEE DATE _____
NOTE:
LOCATION OF UNDERGROUND STRUCTURES AS SHOWN ARE BASED ON THE BEST INFORMATION AVAILABLE BUT NO GUARANTEE IS GIVEN THAT ALL EXISTING UTILITIES ARE SHOWN OR THAT THE GIVEN LOCATIONS ARE EXACT. CONFIRMATION OF EXISTENCE AND EXACT LOCATION OF ALL SERVICES MUST BE OBTAINED FROM THE INDIVIDUAL UTILITIES BEFORE PROCEEDING WITH CONSTRUCTION.

B.M. ELEV.	CONSTRUCTION COMPLETION DATE: YYYY MM DD		
A	ISSUED FOR RFQ	15/10/19	KLC
NO.	REVISIONS	DATE	BY

AECOM

DESIGNED BY	JAT	CHECKED BY	
DRAWN BY	ADL	APPROVED BY	
SCALE:		RELEASED FOR CONSTRUCTION	
HORIZONTAL	1:250		
VERTICAL	1:50		
DATE	2019 10 15	DATE	

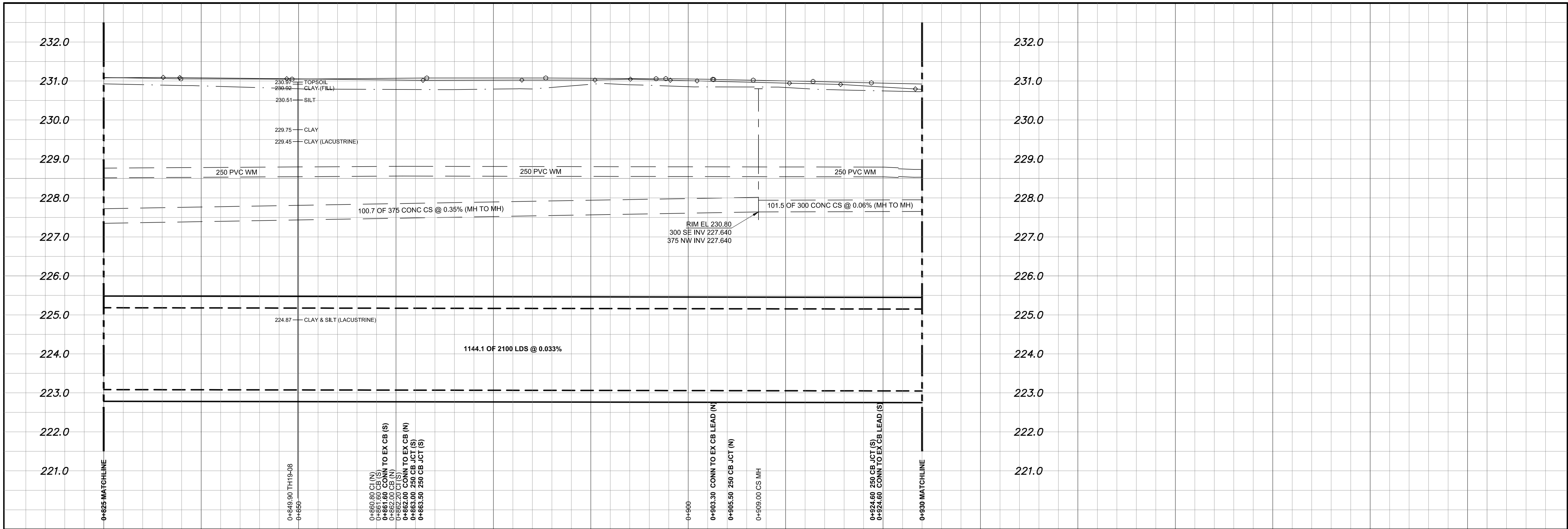
PLOT DATE: 2019 10 15

ENGINEER'S SEAL
CONSULTANT DRAWING NUMBER
C-1008

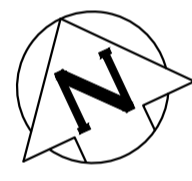
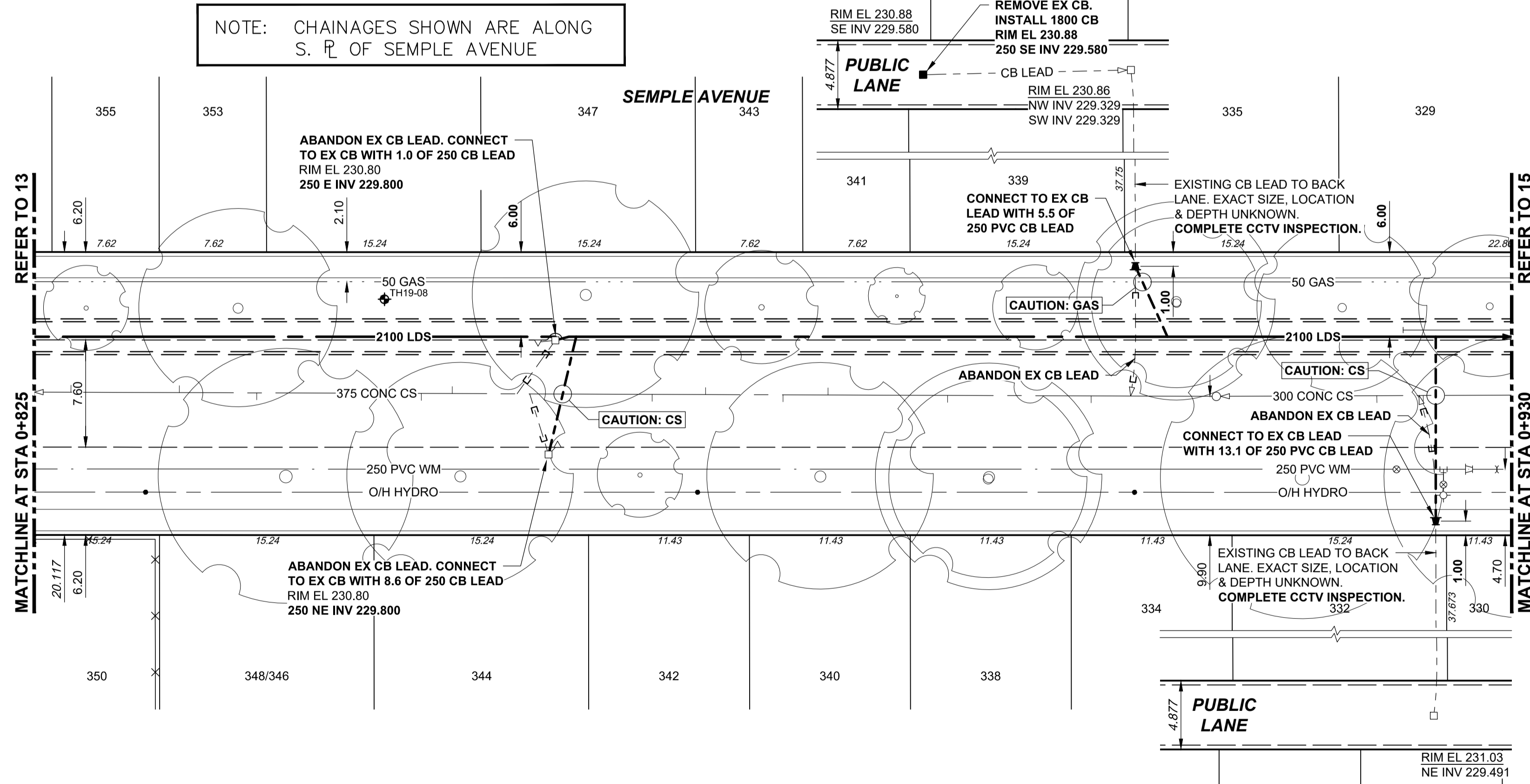
THE CITY OF WINNIPEG
WATER AND WASTE DEPARTMENT
ENGINEERING DIVISION

JEFFERSON EAST
COMBINED SEWER RELIEF
CONTRACT 5 - SEMPLE TRUNK SEWER
SEMPLE AVENUE
108m EAST OF MCKENZIE STREET TO
147m WEST OF ANDREWS STREET

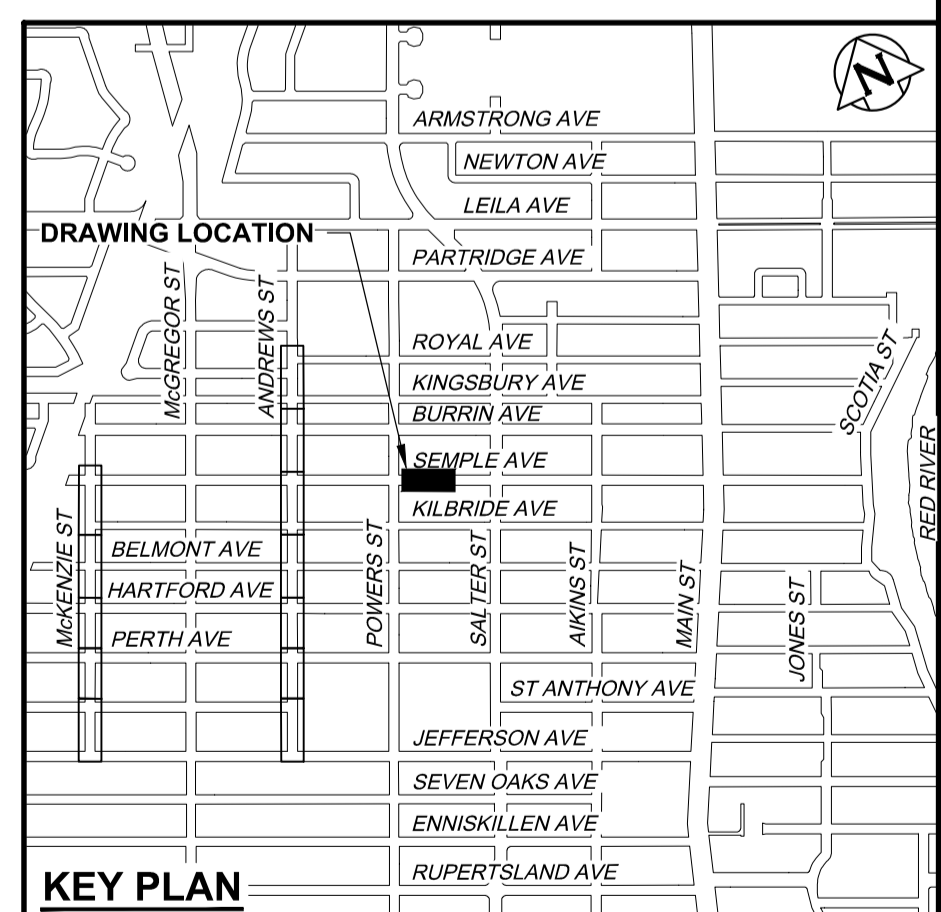
SHEET 10 OF 22
CITY DRAWING NUMBER
10



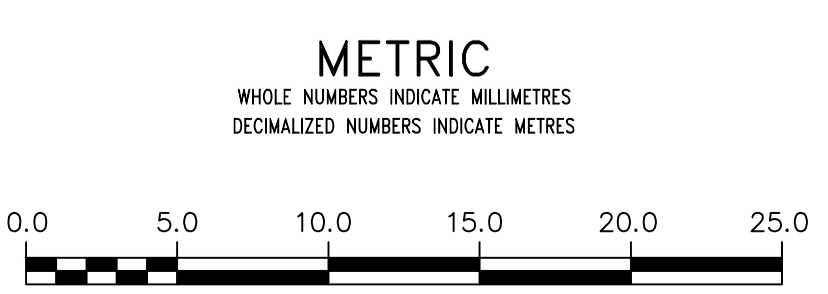
NOTE: CHAINAGES SHOWN ARE ALONG S. R. OF SEMPLE AVENUE



PRELIMINARY
NOT FOR CONSTRUCTION



**ENGINEERS
GEOSCIENTISTS
MANITOBA**
Certificate of Authorization
AECOM Canada Ltd.
No. 4671 Date: _____



WARNING
IF POWER EQUIPMENT OR EXPLOSIVES ARE TO BE USED FOR EXCAVATION ON THIS PROJECT THE CONTRACTOR MUST:
1) NOTIFY THE GAS COMPANY OF THE PROPOSED LOCATION OF EXCAVATION.
2) TAKE PRECAUTION TO AVOID DAMAGE TO GAS COMPANY INSTALLATIONS.
SEE PROVINCIAL REGULATION 210/72 FOR DETAILS

LOCATION APPROVED
UNDERGROUND STRUCTURES
SUPV. U/G STRUCTURES COMMITTEE DATE
NOTE:
LOCATION OF UNDERGROUND STRUCTURES AS SHOWN ARE BASED ON THE BEST INFORMATION AVAILABLE BUT NO GUARANTEE IS GIVEN THAT ALL EXISTING UTILITIES ARE SHOWN OR THAT THE GIVEN LOCATIONS ARE EXACT. CONFIRMATION OF EXISTENCE AND EXACT LOCATION OF ALL SERVICES MUST BE OBTAINED FROM THE INDIVIDUAL UTILITIES BEFORE PROCEEDING WITH CONSTRUCTION.

B.M. ELEV.	CONSTRUCTION COMPLETION DATE: YYYY MM DD		
A	ISSUED FOR RFQ	15/10/19	KLC
NO.	REVISIONS	DATE	BY

AECOM

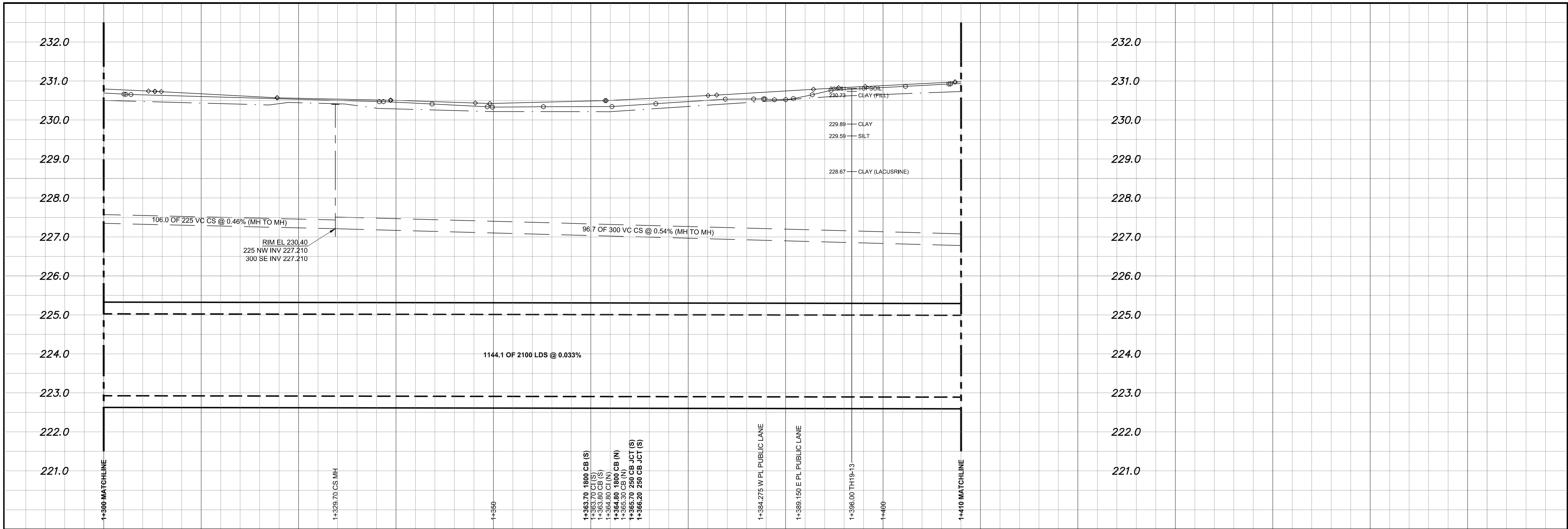
DESIGNED BY	JAT	CHECKED BY	
DRAWN BY	ADL	APPROVED BY	
SCALE:		RELEASED FOR CONSTRUCTION	
HORIZONTAL	1:250	DATE	2019 10 15
VERTICAL	1:50		

ENGINEER'S SEAL
CONSULTANT DRAWING NUMBER
C-1012

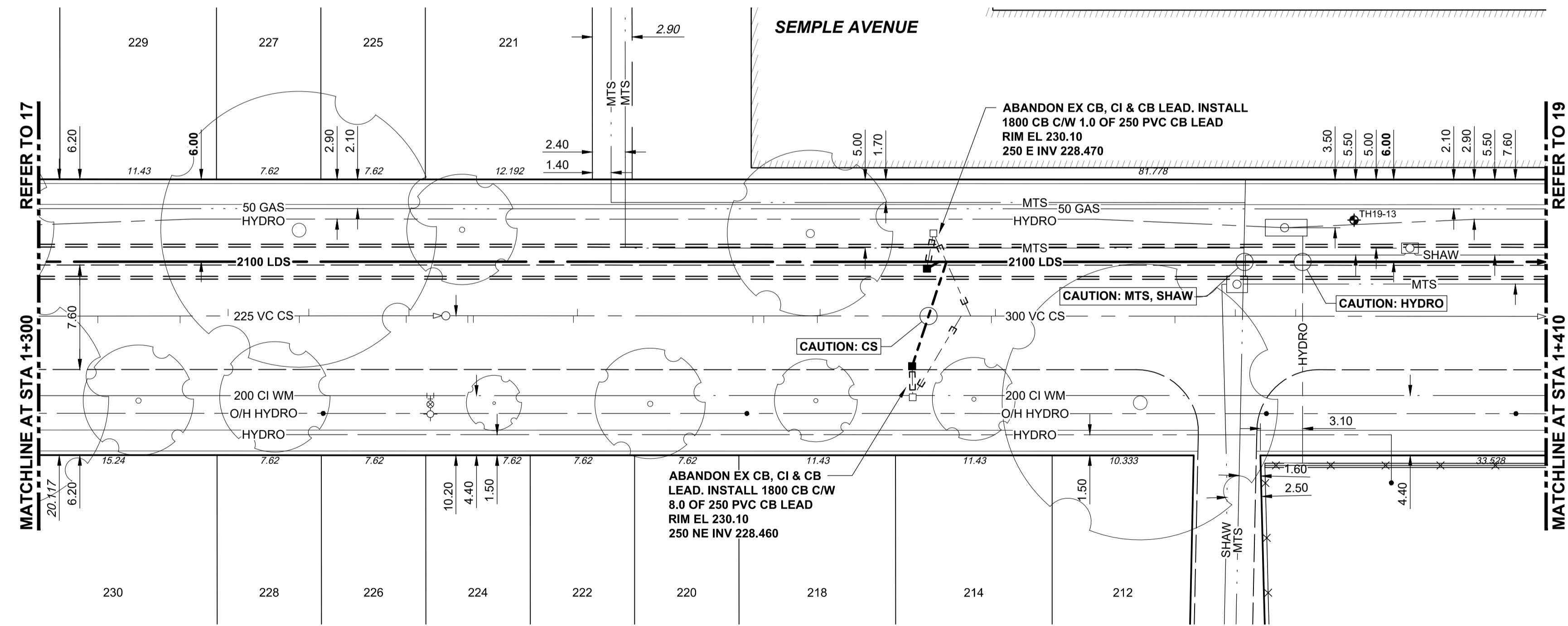
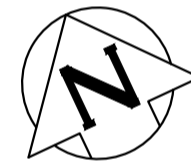
THE CITY OF WINNIPEG
WATER AND WASTE DEPARTMENT
ENGINEERING DIVISION

JEFFERSON EAST
COMBINED SEWER RELIEF
CONTRACT 5 - SEMPLE TRUNK SEWER
SEMPLE AVENUE
6m EAST OF POWERS STREET TO
70m WEST OF SALTER STREET

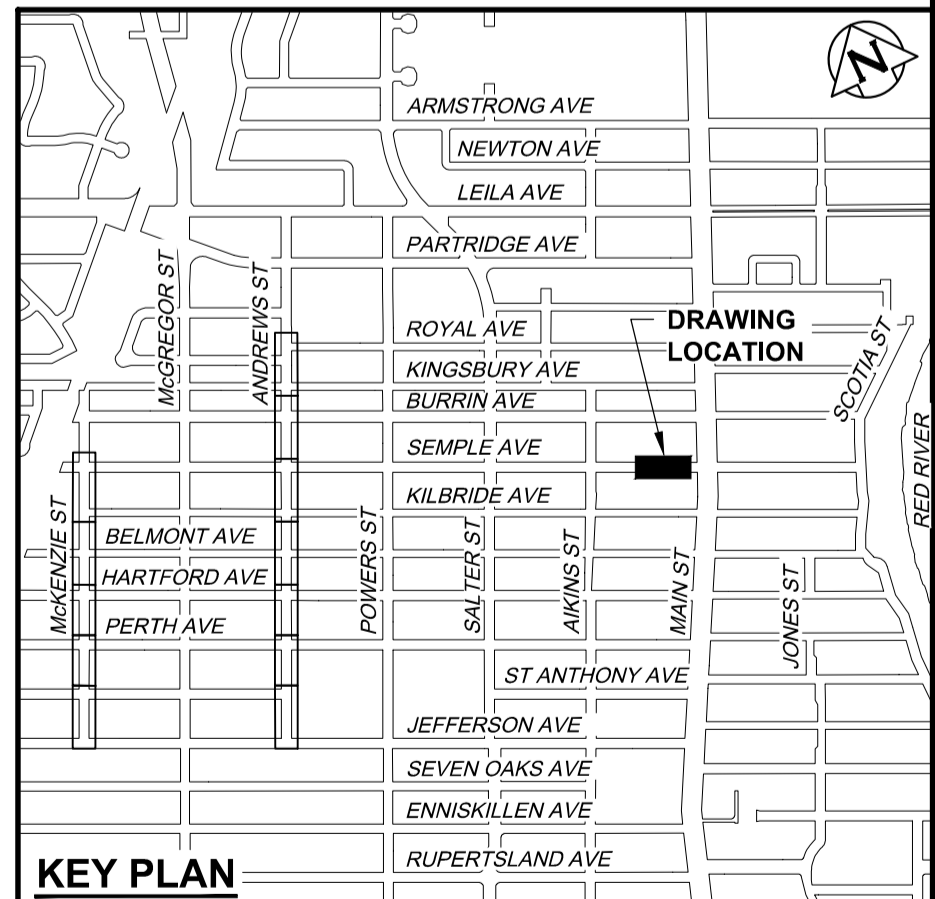
SHEET 14 OF 22
CITY DRAWING NUMBER
14



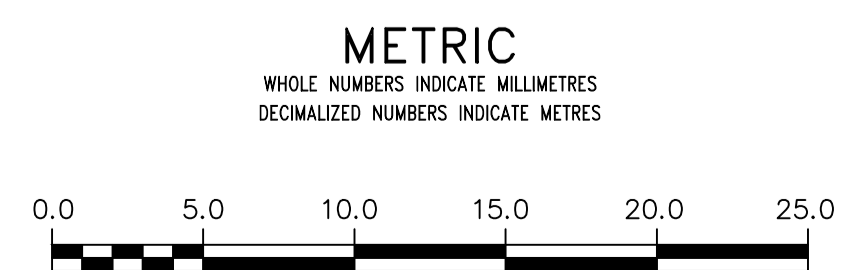
NOTE: CHAINAGES SHOWN ARE ALONG S. R. OF SEMPLE AVENUE



PRELIMINARY
NOT FOR CONSTRUCTION



**ENGINEERS
GEOSCIENTISTS
MANITOBA**
Certificate of Authorization
AECOM Canada Ltd.
No. 4671 Date: _____



WARNING
IF POWER EQUIPMENT OR EXPLOSIVES ARE TO BE USED FOR EXCAVATION ON THIS PROJECT THE CONTRACTOR MUST:
1) NOTIFY THE GAS COMPANY OF THE PROPOSED LOCATION OF EXCAVATION.
2) TAKE PRECAUTION TO AVOID DAMAGE TO GAS COMPANY INSTALLATIONS.
SEE PROVINCIAL REGULATION 210/72 FOR DETAILS

**LOCATION APPROVED
UNDERGROUND STRUCTURES**
SUPV. U/G STRUCTURES COMMITTEE DATE
NOTE:
LOCATION OF UNDERGROUND STRUCTURES AS SHOWN ARE BASED ON THE BEST INFORMATION AVAILABLE BUT NO GUARANTEE IS GIVEN THAT ALL EXISTING UTILITIES ARE SHOWN OR THAT THE GIVEN LOCATIONS ARE EXACT. CONFIRMATION OF EXISTENCE AND EXACT LOCATION OF ALL SERVICES MUST BE OBTAINED FROM THE INDIVIDUAL UTILITIES BEFORE PROCEEDING WITH CONSTRUCTION.

B.M. ELEV.	
CONSTRUCTION COMPLETION DATE: YYYY MM DD	
DESIGNED BY	JAT
CHECKED BY	
DRAWN BY	ADL
APPROVED BY	
SCALE:	
HORIZONTAL	1:250
VERTICAL	1:50
ISSUED FOR RFQ	15/10/19 KLC
DATE	2019 10 15
PLOT DATE:	2019 10 15

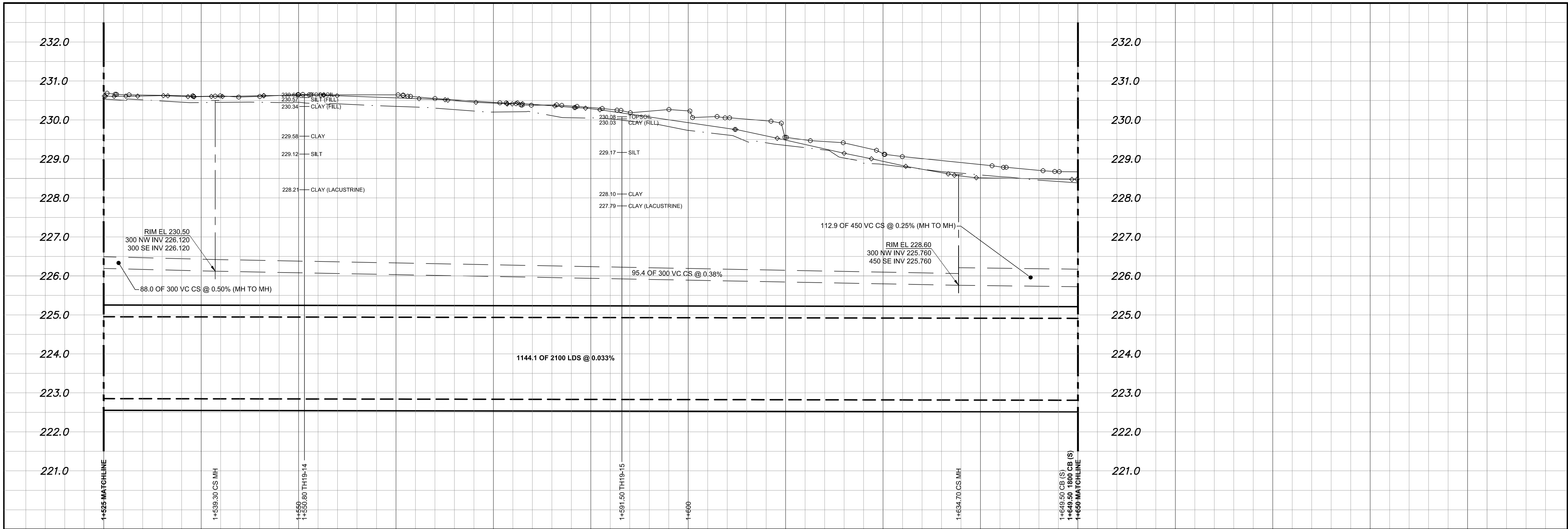


ENGINEER'S SEAL
CONSULTANT DRAWING NUMBER
C-1016

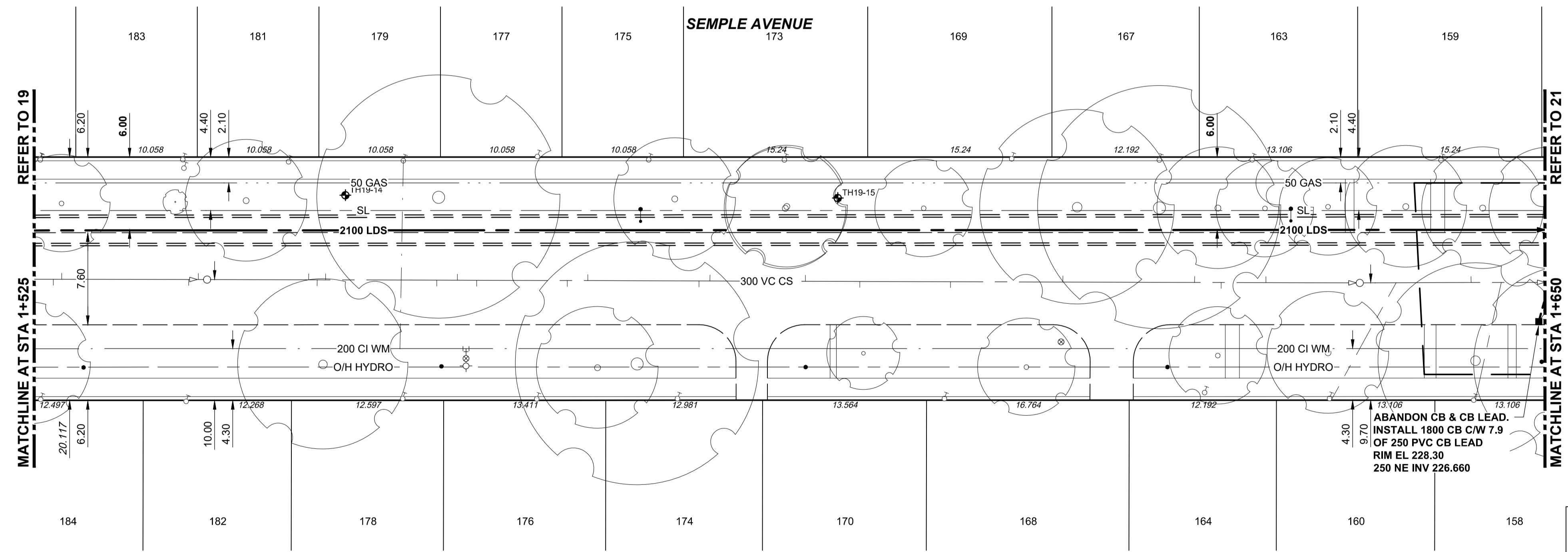
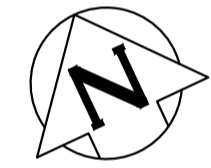
THE CITY OF WINNIPEG
WATER AND WASTE DEPARTMENT
ENGINEERING DIVISION

JEFFERSON EAST
COMBINED SEWER RELIEF
CONTRACT 5 - SEMPLE TRUNK SEWER
SEMPLE AVENUE
78m EAST OF AIKINS STREET TO
13m WEST OF MAIN STREET

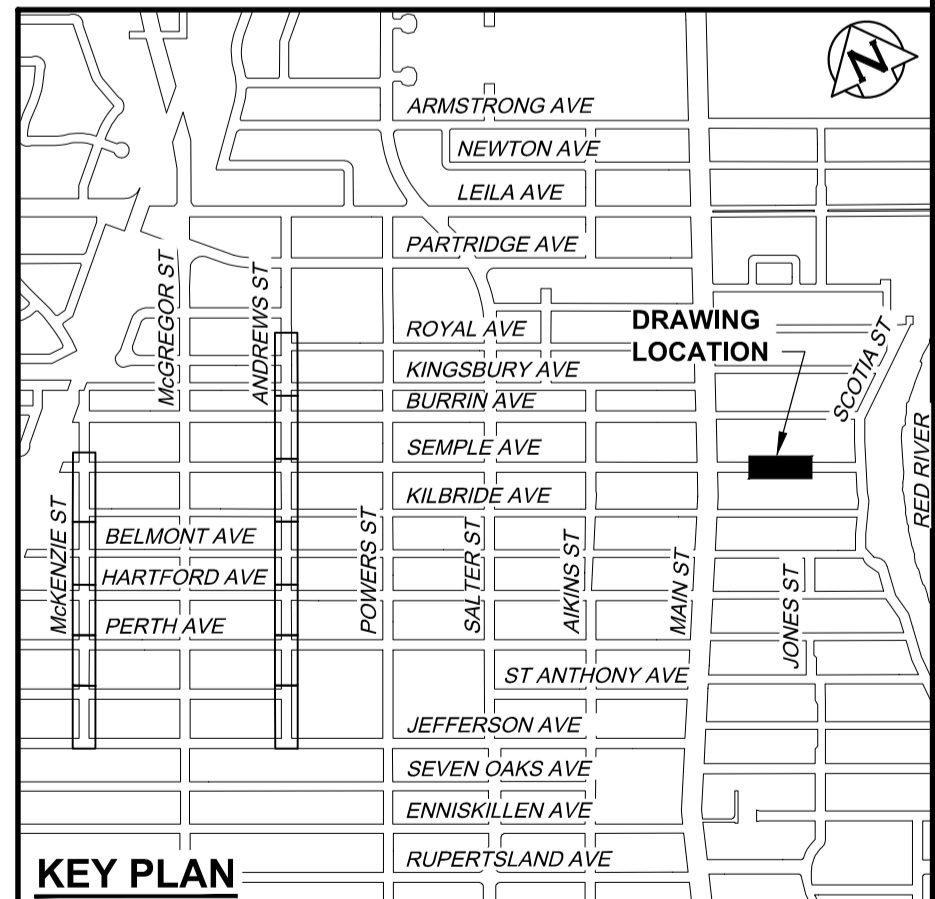
SHEET 18 OF 22
CITY DRAWING NUMBER
18



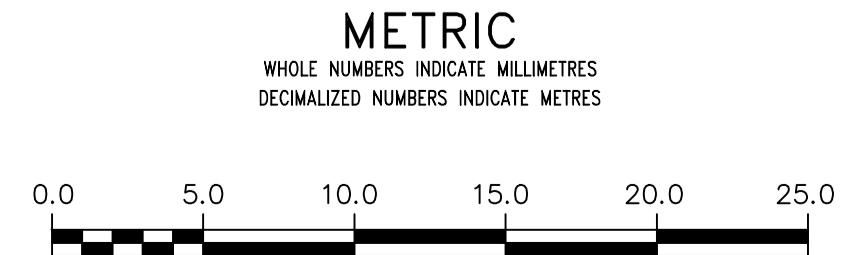
NOTE: CHAINAGES SHOWN ARE ALONG S. R. OF SEMPLE AVENUE



PRELIMINARY
NOT FOR CONSTRUCTION



**ENGINEERS
GEOLOGISTS
MANITOBA**
Certificate of Authorization
AECOM Canada Ltd.
No. 4671 Date: _____



WARNING
IF POWER EQUIPMENT OR EXPLOSIVES ARE TO BE USED FOR EXCAVATION ON THIS PROJECT THE CONTRACTOR MUST:
1) NOTIFY THE GAS COMPANY OF THE PROPOSED LOCATION OF EXCAVATION.
2) TAKE PRECAUTION TO AVOID DAMAGE TO GAS COMPANY INSTALLATIONS.
SEE PROVINCIAL REGULATION 210/72 FOR DETAILS

LOCATION APPROVED
UNDERGROUND STRUCTURES
SUPV. U/G STRUCTURES COMMITTEE DATE _____
NOTE:
LOCATION OF UNDERGROUND STRUCTURES AS SHOWN ARE BASED ON THE BEST INFORMATION AVAILABLE BUT NO GUARANTEE IS GIVEN THAT ALL EXISTING UTILITIES ARE SHOWN OR THAT THE GIVEN LOCATIONS ARE EXACT. CONFIRMATION OF EXISTENCE AND EXACT LOCATION OF ALL SERVICES MUST BE OBTAINED FROM THE INDIVIDUAL UTILITIES BEFORE PROCEEDING WITH CONSTRUCTION.

B.M. ELEV.	CONSTRUCTION COMPLETION DATE: YYYY MM DD		
A	ISSUED FOR RFQ	15/10/19	KLC
NO.	REVISIONS	DATE	BY

AECOM

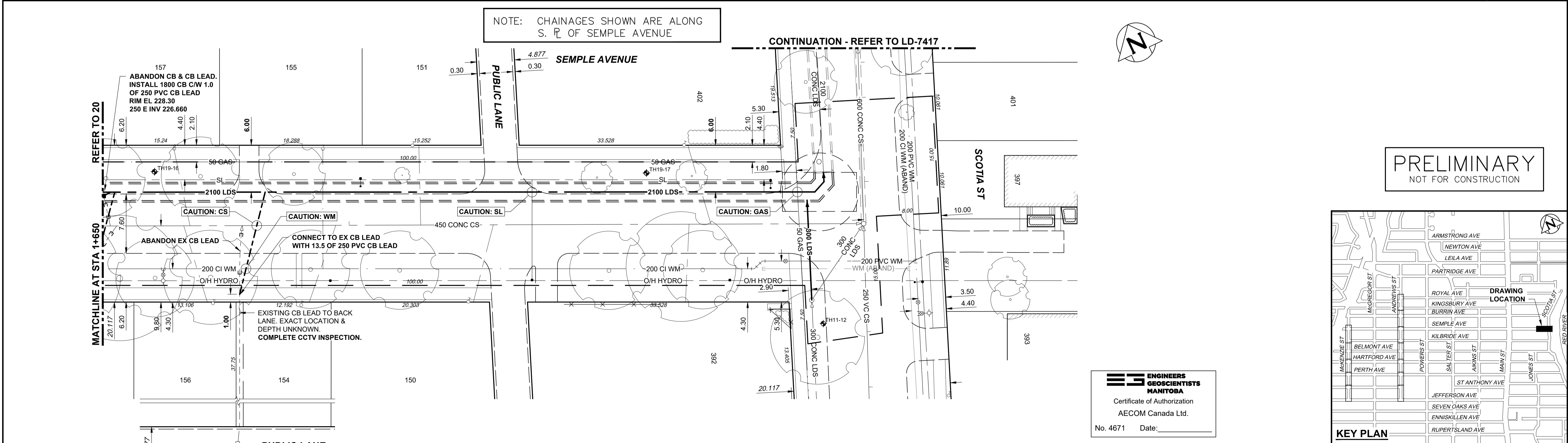
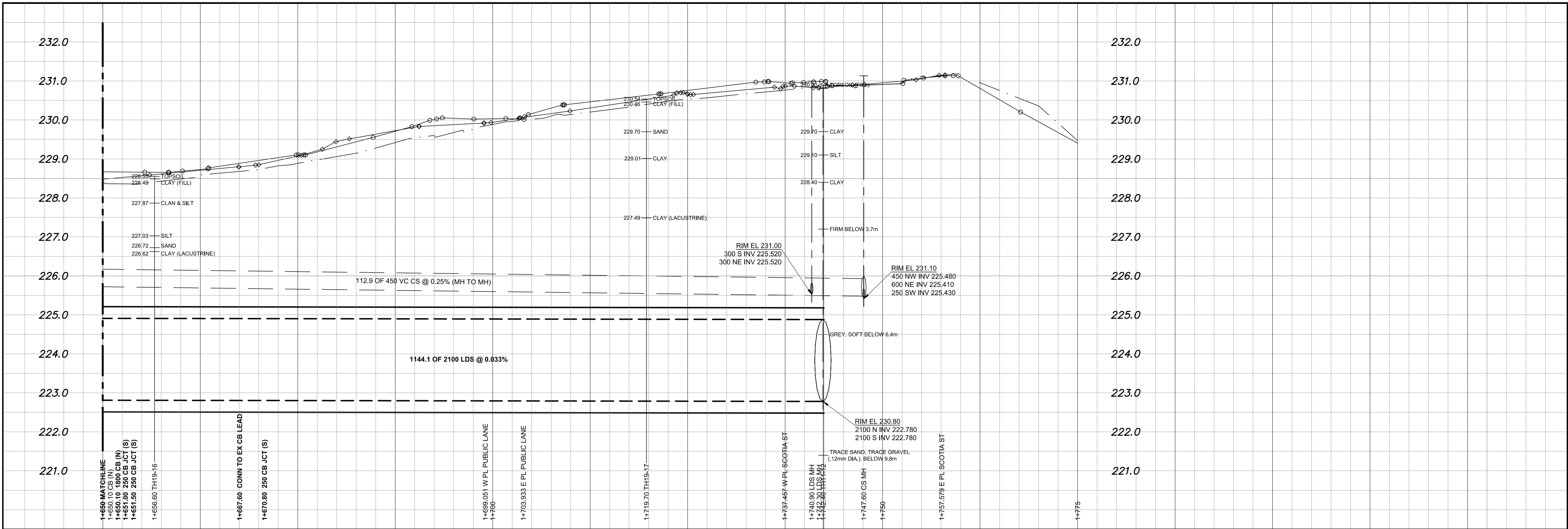
DESIGNED BY	JAT	CHECKED BY	
DRAWN BY	ADL	APPROVED BY	
SCALE:	HORIZONTAL 1:250 VERTICAL 1:50		
DATE	2019 10 15	RELEASED FOR CONSTRUCTION	

ENGINEER'S SEAL
CONSULTANT DRAWING NUMBER
C-1018

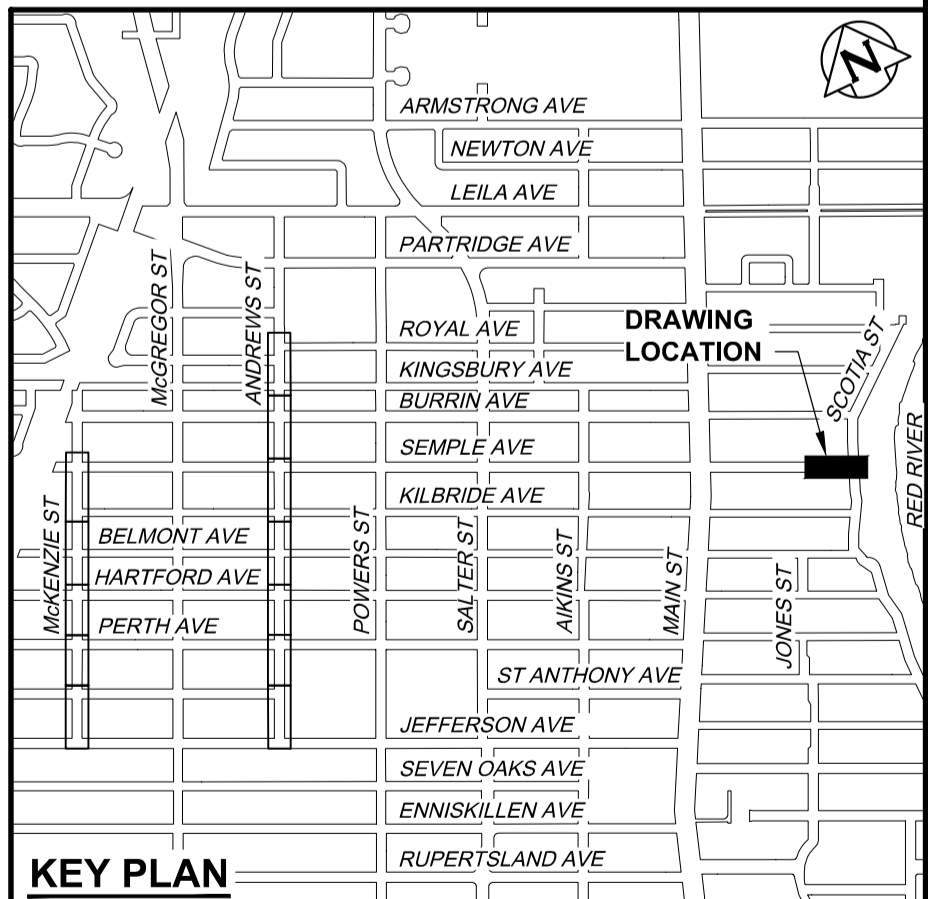
THE CITY OF WINNIPEG
WATER AND WASTE DEPARTMENT
ENGINEERING DIVISION

JEFFERSON EAST
COMBINED SEWER RELIEF
CONTRACT 5 - SEMPLE TRUNK SEWER
SEMPLE AVENUE
62m EAST OF MAIN STREET TO
88m WEST OF SCOTIA STREET

SHEET 20 OF 22
CITY DRAWING NUMBER
20



PRELIMINARY
NOT FOR CONSTRUCTION



**ENGINEERS
GEOSCIENTISTS
MANITOBA**
Certificate of Authorization
AECOM Canada Ltd.
No. 4671 Date: _____

ENGINEER'S SEAL
CONSULTANT DRAWING NUMBER
C-1019



THE CITY OF WINNIPEG
WATER AND WASTE DEPARTMENT
ENGINEERING DIVISION

JEFFERSON EAST
COMBINED SEWER RELIEF
CONTRACT 5 - SEMPLE TRUNK SEWER
SEMPLE AVENUE
187m EAST OF MAIN STREET
TO SCOTIA STREET

SHEET 21 OF 22
CITY DRAWING NUMBER
21

WARNING
IF POWER EQUIPMENT OR EXPLOSIVES ARE TO BE USED FOR EXCAVATION ON THIS PROJECT THE CONTRACTOR MUST:
1) NOTIFY THE GAS COMPANY OF THE PROPOSED LOCATION OF EXCAVATION.
2) TAKE PRECAUTION TO AVOID DAMAGE TO GAS COMPANY INSTALLATIONS.
SEE PROVINCIAL REGULATION 210/72 FOR DETAILS

LOCATION APPROVED
UNDERGROUND STRUCTURES
SUPV. U/G STRUCTURES COMMITTEE DATE
NOTE:
LOCATION OF UNDERGROUND STRUCTURES AS SHOWN ARE BASED ON THE BEST INFORMATION AVAILABLE BUT NO GUARANTEE IS GIVEN THAT ALL EXISTING UTILITIES ARE SHOWN OR THAT THE GIVEN LOCATIONS ARE EXACT. CONFIRMATION OF EXISTENCE AND EXACT LOCATION OF ALL SERVICES MUST BE OBTAINED FROM THE INDIVIDUAL UTILITIES BEFORE PROCEEDING WITH CONSTRUCTION.

B.M. ELEV.	
CONSTRUCTION COMPLETION DATE: YYYY MM DD	
DESIGNED BY	JAT
CHECKED BY	
DRAWN BY	ADL
APPROVED BY	
SCALE:	
HORIZONTAL	1:250
VERTICAL	1:50
RELEASED FOR CONSTRUCTION	
ISSUED FOR RFQ	15/10/19 KLC
NO.	REVISIONS
DATE	BY
2019 10 15	

AECOM

DESIGNED BY: JAT
CHECKED BY:
DRAWN BY: ADL
APPROVED BY:
SCALE: HORIZONTAL 1:250, VERTICAL 1:50
RELEASED FOR CONSTRUCTION
ISSUED FOR RFQ: 15/10/19 KLC
DATE: 2019 10 15
PLOT DATE: 2019 10 15

