

- CONSTRUCTION NOTES**
- OVERLAY EXISTING PAVEMENT WITH ASPHALT
 - CONSTRUCT NEW 100mm CONCRETE SIDEWALK (SD-228A)
 - REMOVE EXISTING CURB AND CONSTRUCT NEW BARRIER CURB (SD-206A)
 - CONSTRUCT NEW 200mm CONCRETE PAVEMENT AND CAP WITH ASPHALT
 - RECONSTRUCT EXISTING TREE VAULT (REFERENCE DETAIL A/B ON SHEET 9)
 - LIMIT OF ASPHALT OVERLAY
 - REMOVE EXISTING SIDEWALK AND CONSTRUCT NEW MONOLITHIC CONCRETE CURB AND SIDEWALK (SD-228B)
 - STREET LIGHT TO BE RELOCATED BY OTHERS
 - REMOVE EXISTING PAVEMENT AND CONSTRUCT NEW 250mm CONCRETE PAVEMENT
 - REMOVE EXISTING TREE
 - REMOVE EXISTING CURB AND CONSTRUCT NEW SAFETY CURB (SD-206B)
 - REMOVE EXISTING PAVERS
 - REMOVE EXISTING PAVERS AND INSTALL NEW 250mm CONCRETE PAVEMENT
 - REMOVE EXISTING BULLNOSE AND INSTALL NEW MONOLITHIC CONCRETE BULLNOSE (SD-227C)
 - ADJUST EXISTING MH FRAME AND COVER
 - INSTALL LIFTER RING TO MATCH NEW GRADES
 - NOT TO BE ADJUSTED. PROTECT DURING CONSTRUCTION

- GENERAL NOTES**
- PAVEMENT DIMENSIONS ARE TO BACK OF CURB
 - ALL CURB RADII UNDER 15.0m SHALL BE MODIFIED
 - ADD 200.000m TO ALL DESIGN ELEVATION TO OBTAIN GEODETIC ELEVATIONS
 - CURB REPLACEMENT AS DIRECTED BY CONTRACT ADMINISTRATOR
 - INSTALL DETECTABLE WARNING TILES AT ALL PEDESTRIAN CROSSINGS
 - CONTRACTOR TO TAKE PRECAUTIONARY STEPS TO PROTECT EXISTING TREES WITHIN CONSTRUCTION LIMITS FROM DAMAGE FROM CONSTRUCTION ACTIVITIES, AS OUTLINED IN THE SPECIFICATIONS
 - CONTRACTOR TO CONFIRM LOCATIONS OF ALL UTILITIES/ SERVICES PRIOR TO CONSTRUCTION
 - USE EXTREME CAUTION WHEN WORKING ABOVE UTILITY VAULTS
 - ADJUST MANHOLE, CATCH BASIN CATCH PIT AND WATER VALVE RIMS TO NEW GRADES

PRELIMINARY
NOT TO BE USED FOR
CONSTRUCTION

METRIC
WHOLE NUMBERS INDICATE MILLIMETERS
DECIMALIZED NUMBERS INDICATE METERS
BID OPPORTUNITY NO. 100-2019

EXISTING	LEGEND - PLAN	PROPOSED	EXISTING	LEGEND - PLAN	PROPOSED	EXISTING	LEGEND - PROFILE	PROPOSED	
	HYDRANT			LDS/WWS			CONCRETE		
	VALVE			WATERMAIN			CONCRETE SIDEWALK		
	CURB STOP			GAS			ASPHALT		
	MANHOLE			TRAFFIC SIGNALS					
	CATCH BASIN			HYDRO/STREET LIGHT			LEGEND - PLAN		PROPOSED
	CURB INLET			MTS/SHAW			SOUTHBOUND GUTTER		
	HYDRO POLE			CURB RENEWAL			NORTHBOUND MEDIAN LANE		
	LIGHT STANDARD			PROPERTY LINE			NORTHBOUND GUTTER		
	TRAFFIC SIGNAL POLE			RAMP CURB			SOUTHBOUND GUTTER		
	SURVEY BAR			ELEVATIONS			SOUTHBOUND MEDIAN LANE		
	GEODETIC BENCH MARK			TREE					

LOCATION APPROVED UNDERGROUND STRUCTURES

DATE: _____

NOTE:
LOCATION OF UNDERGROUND STRUCTURES AS SHOWN ARE BASED ON THE BEST INFORMATION AVAILABLE. BUT NO GUARANTEE IS GIVEN THAT ALL EXISTING UTILITIES ARE SHOWN OR THAT THE GIVEN LOCATIONS ARE EXACT. CONFIRMATION OF EXISTENCE AND EXACT LOCATION OF ALL SERVICES MUST BE OBTAINED FROM THE INDIVIDUAL UTILITIES BEFORE PROCEEDING WITH CONSTRUCTION.

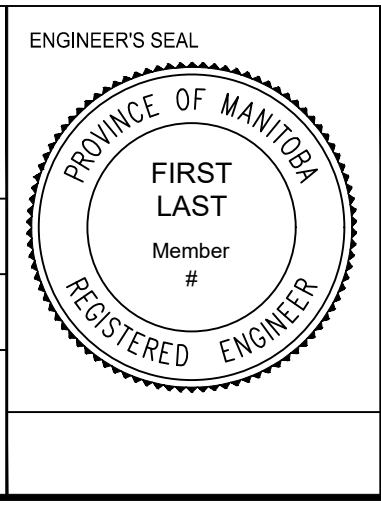
ENGINEERING DIVISION
TECHNOLOGY SERVICES BRANCH
106 - 1155 PACIFIC AVE

DESIGNED BY: T.K. CHECKED BY: C.H.

DRAWN BY: S.D. & T.K. APPROVED BY: _____

HOR. SCALE: 1 : 250
VERTICAL: 1 : 10

DATE: 2019/05/16



THE CITY OF WINNIPEG
PUBLIC WORKS DEPARTMENT

MAIN ST
FROM LOMBARD AVE TO HIGGINS AVE
ASPHALT OVERLAY AND ASSOCIATED WORKS
FROM STA. 1+00 TO STA. 1+90

CITY DRAWING NUMBER: SE-19-22
SHEET 1 OF 11

1