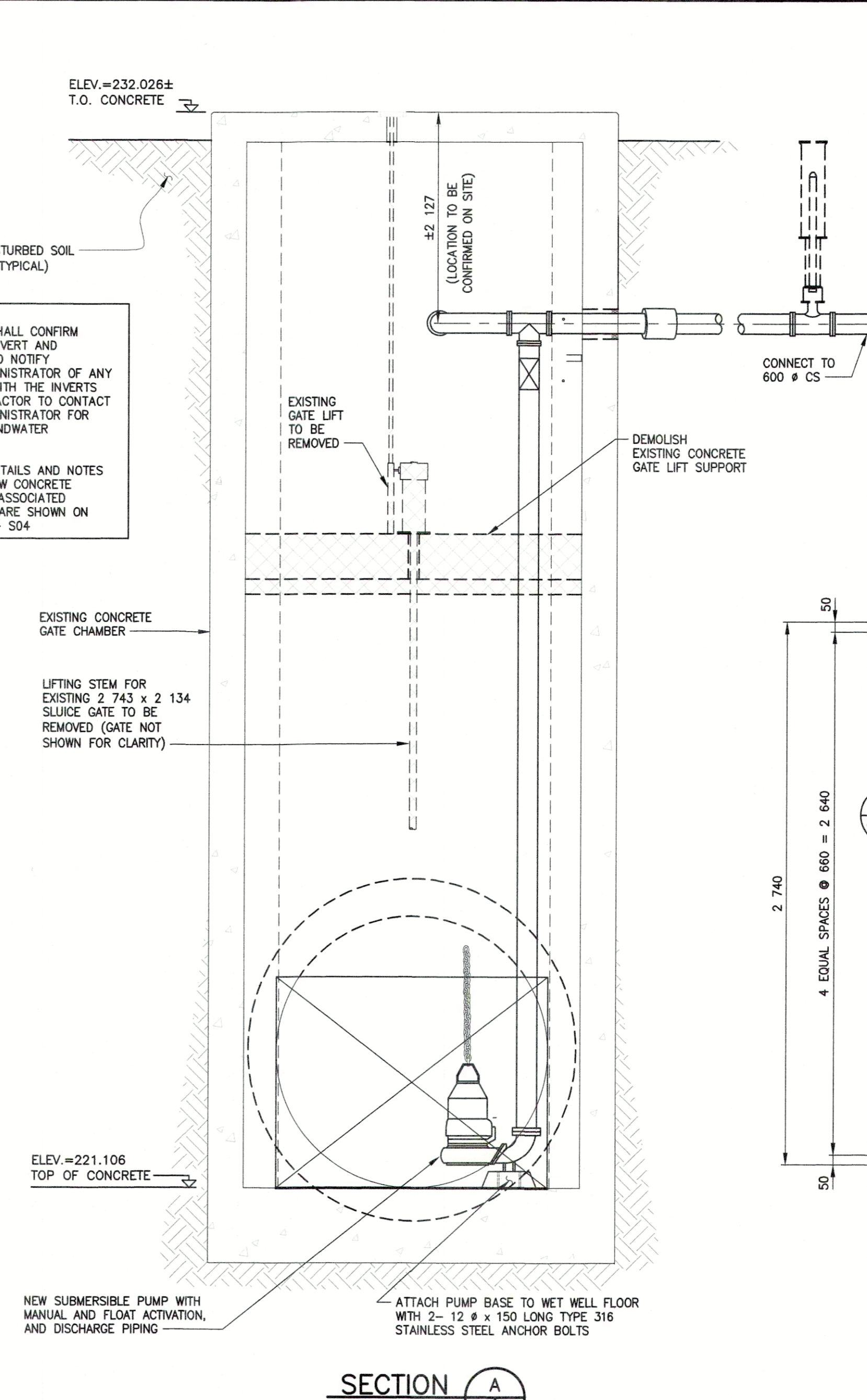
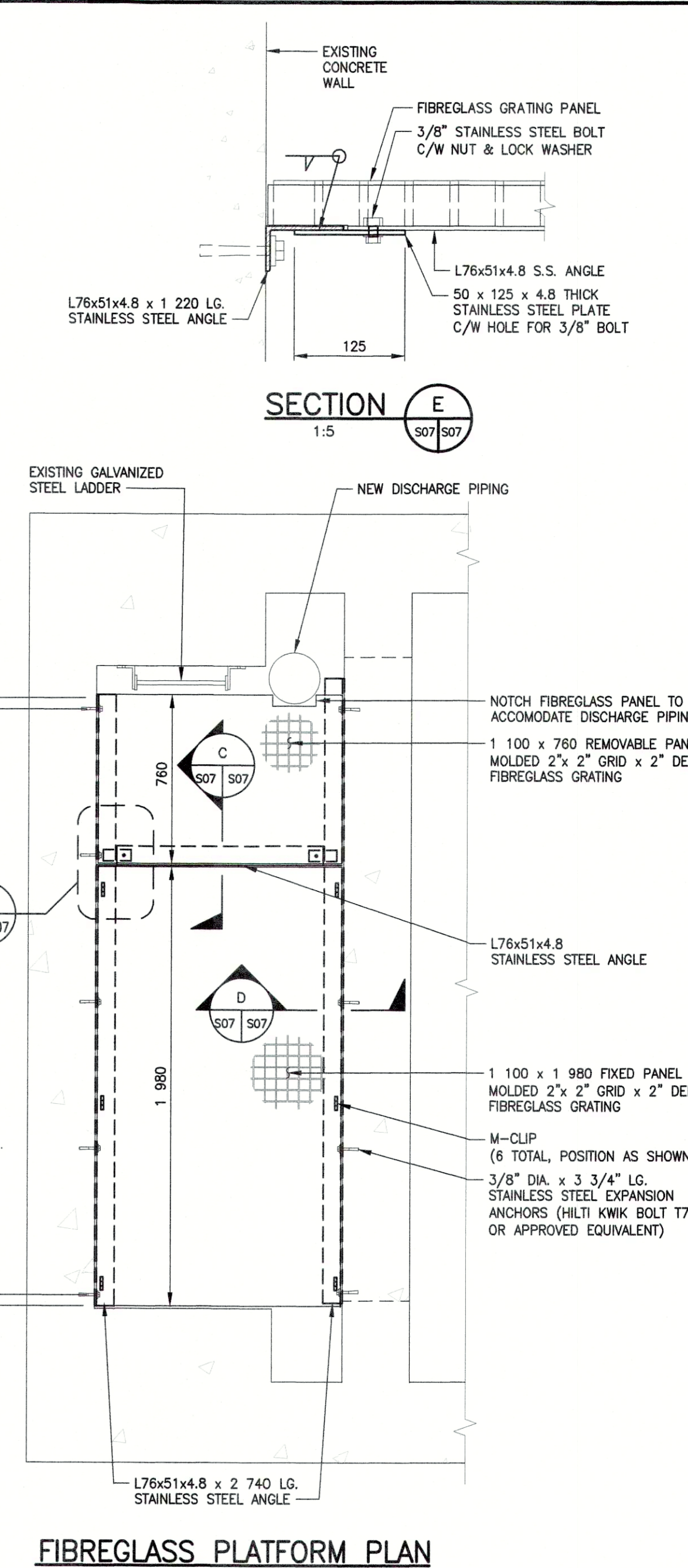


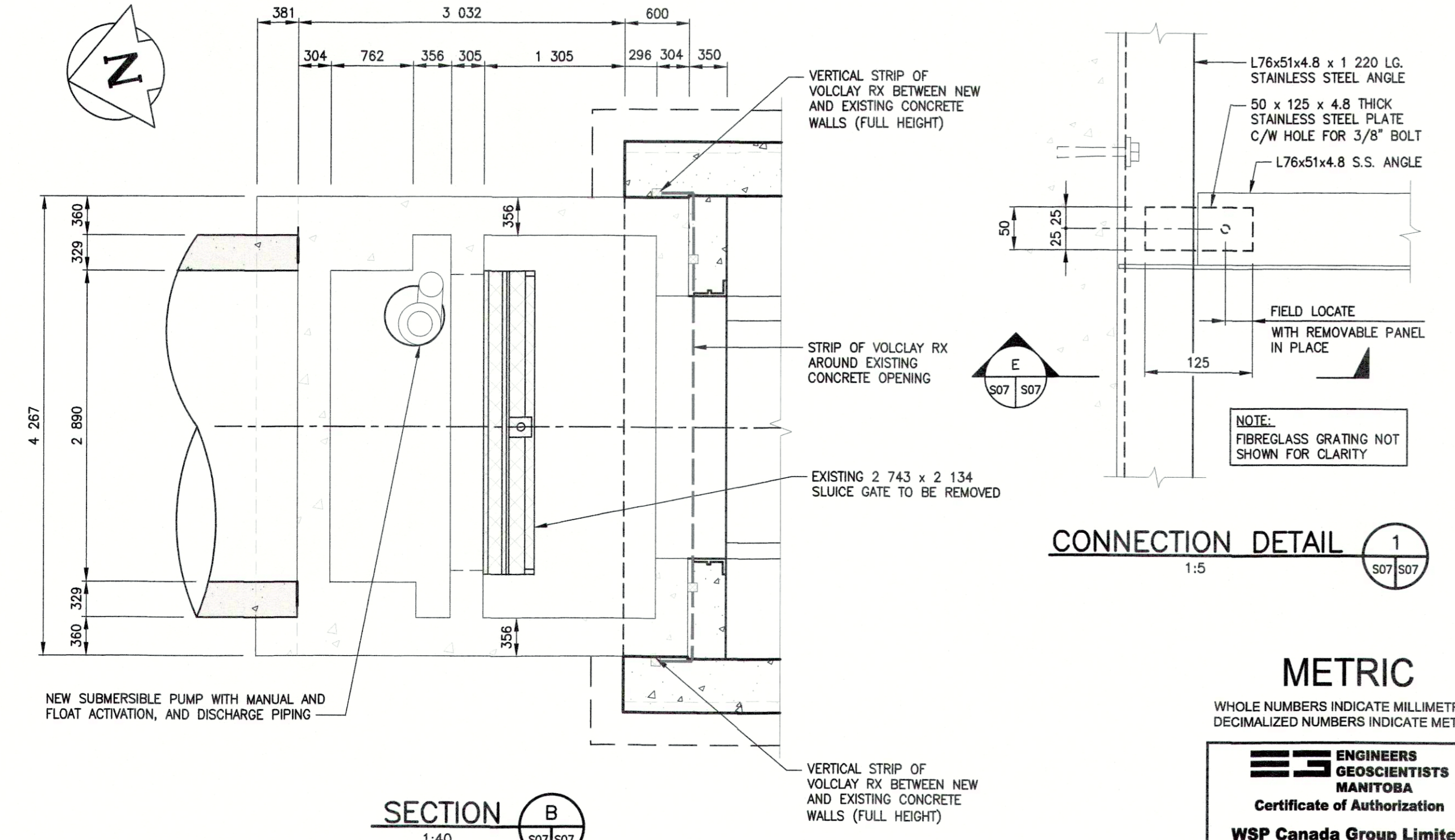
SECTION THROUGH CENTRE OF CHAMBER
1:40



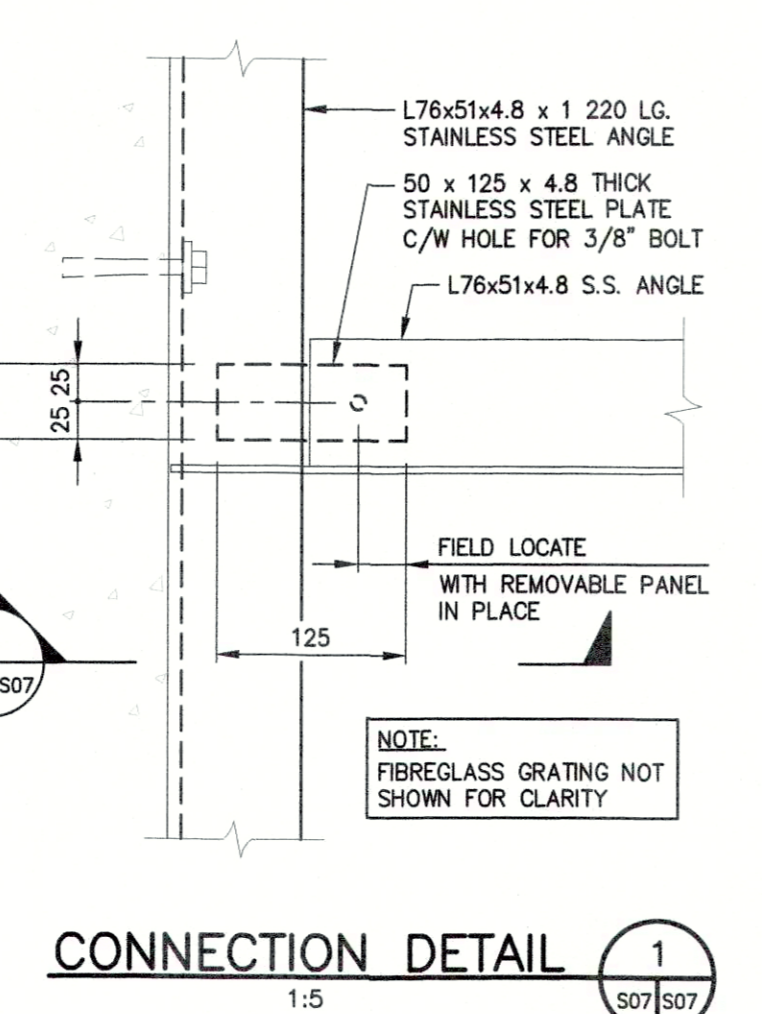
SECTION A
1:40



FIBREGLASS PLATFORM PLAN
1:10



SECTION B
1:40



CONNECTION DETAIL 1
1:5

- LEGEND**
- EXISTING CHAMBER CONCRETE
 - NEW CHAMBER CONCRETE
 - EXISTING ITEMS/CONCRETE TO BE REMOVED

SCALE LEGEND

NOTES:

1. REMOVE EXISTING SLUICE GATE.
2. PROVIDE TEMPORARY PUMPING OF WASTEWATER DURING CONSTRUCTION.
3. INSTALL MECHANICAL AND ELECTRICAL WORK AS INDICATED AND ACCORDING TO MANUFACTURER'S SPECIFICATION.
4. GASKETS TO BE FULL FACED, 3 THICK RED RUBBER.
5. CONTRACTOR TO CONFIRM ALL DIMENSIONS BEFORE ASSEMBLING.

MISCELLANEOUS METALS AND ACCESSORIES:

1. ALL STAINLESS STEEL SHAPES SHALL BE IN ACCORDANCE WITH ASTM A276/A276M-17 TYPE 304 OR 304L AND STAINLESS STEEL PLATES SHALL BE IN ACCORDANCE WITH ASTM A240/A240M-17 TYPE 304 OR 304L.
2. ALL OTHER STEEL SHAPES AND PLATES SHALL BE IN ACCORDANCE WITH CSA G40.21-M, GRADE 300W, EXCEPT W, HP AND HSS SECTIONS WHICH SHALL BE GRADE 350W CLASS C.
3. WELDING MATERIALS SHALL CONFORM TO CSA W59.
4. ANCHOR BOLTS AND FASTENERS SHALL CONFORM TO ASTM A276, TYPE 316 STAINLESS STEEL, OF AMPLE SECTION TO SAFELY WITHSTAND THE FORCES CREATED BY OPERATION OF THE EQUIPMENT OR THE LOAD TO WHICH THEY WILL BE SUBJECTED.
5. ALL EXPOSED OR PARTIALLY EXPOSED MISCELLANEOUS METAL WORKS, INCLUDING NAILS, BOLTS, NUTS AND WASHERS SHALL BE HOT DIP GALVANIZED. GALVANIZING SHALL CONFORM TO CSA G184 MINIMUM COATING OF 600 g/m².
6. WHERE GALVANIZING IS DAMAGED, REPAIR WITH TWO COATS OF A ONE COMPOUND ZINC-RICH COATING CONTAINING 96% NON-TOXIC ELECTROLYTIC ZINC POWDER (PURE TO 99.995%) AND NON-TOXIC SOLVENT.

LEGEND

WHOLE NUMBERS INDICATE MILLIMETRES
DECIMALIZED NUMBERS INDICATE METRES

ENGINEERS
GEOSCIENTISTS
MANITOBA
Certificate of Authorization
WSP Canada Group Limited
No. 6657

DESIGNED BY	BB/MRI	CHECKED BY	EH
DRAWN BY	KD	APPROVED BY	JPL
HOR. SCALE	AS NOTED	RELEASED FOR CONSTRUCTION	Signed by KZ September 14, 2018
VERTICAL SCALE	AS NOTED	DATE	13/09/2018

NO.	REVISIONS	DATE	BY
1	ISSUED FOR TENDER	13/09/2018	BB

THE CITY OF WINNIPEG
WATER AND WASTE DEPARTMENT

OUTFALL GATE CHAMBER UPGRADES
AUBREY STREET
SRS OUTFALL GATE CHAMBER

CONSULTANT DRAWING NUMBER: 5516047 - S07
SHEET 09 OF 33
CITY DRAWING NUMBER: LD-8021

WSP Canada Group Limited
93 Lombard Avenue, Suite 111
Winnipeg MB R3B 3B1
T: 1 204-943-3178
F: 1 204-943-6948
www.wsp.com

ENGINEERS
R.B. BOWLES
Member
34037
REGISTERED PROFESSIONAL ENGINEER

BID OPPORTUNITY: 865-2018
PLOT DATE: 13/09/2018

15-0218 - 5116047 - S07 - Existing Chamber Upgrades - Aubrey Chamber Upgrades - DD Gate Chambers - 5516047 - DD Gate Chambers - Aubrey Chamber Upgrades - S07 - Concrete & Reinforcing - Job: S07 - Existing Chamber Upgrades
 P:\516047-S07\516047-S07.dwg
 13/09/2018 10:00 AM
 R:\516047-S07\516047-S07.dwg
 13/09/2018 10:00 AM

NOTE: These design documents are prepared solely for the use by the party with whom the design professional has entered into a contract and there are no representations of any kind made by the design professional to any party with whom the design professional has not entered into a contract.