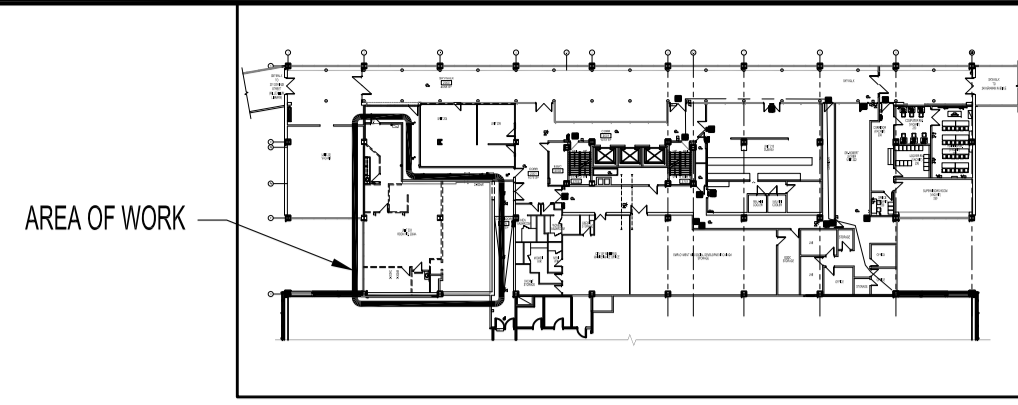


**PARTIAL SECOND FLOOR PLAN**  
SCALE: 1/8" = 1'-0"



**KEY PLAN**  
SCALE: N.T.S.

**NOTES:**

THESE DRAWINGS SHALL NOT BE SCALED. CONSULT WITH CLIENT AND DESIGNER ON ANY CONCERNS.

ALSO REFER TO ELECTRICAL SPECIFICATIONS.

SUBMISSION OF SITE MARK-UPS, AS-BUILTS, OPERATING & MAINTENANCE MANUALS AND OTHER SUPPORTING DOCUMENTS TO CLIENT ARE MANDATORY AT THE COMPLETION OF THIS PROJECT.

THE CONTRACTOR SHALL VISIT THE SITE AND ENSURE ALL DIMENSIONS, DATUM, AND DETAILED INFORMATION SHOWN ARE CORRECT.

THE CONTRACTOR IS TO REVIEW AND COORDINATE ALL ARCHITECTURAL, MECHANICAL AND ELECTRICAL DRAWINGS FOR ADDITIONAL OPENINGS THROUGH FLOORS, WALLS, AND CEILINGS FOR DUCTS, PIPES & ELECTRICAL RISERS AND ALL OPENINGS NOT SHOWN ON DRAWINGS.

ALL OPENINGS THROUGH FIRE ASSEMBLIES INCLUDING FLOORS AND CEILINGS ARE TO BE FIRE STOPPED AND SEALED WITH ULC APPROVED FIRE STOPPING TO MAINTAIN THE INTEGRITY OF THE FIRE SEPARATION, AND PROVIDE A SMOKE-TIGHT BARRIER.

ALL PRODUCTS AND MATERIALS TO BE USED AND INSTALLED SHALL CONFORM WITH MANUFACTURER'S SPECIFICATIONS, APPLICABLE CODES AND AUTHORITY HAVING JURISDICTION.

THE CONTRACTOR SHALL BE RESPONSIBLE TO PATCH AND MAKE GOOD ALL EXISTING CONSTRUCTION AFFECTED BY THE REMOVAL OF ALL ITEMS FORMING PART OF THE RENOVATION WORK.

COMMERCIAL DUTY DUPLEX RECEPTACLES SHALL BE "DECORA" STYLE, WHITE & CSA APPROVED, CW WHITE FACE PLATES MOUNTED 18" ABOVE FINISHED FLOOR OR OTHERWISE NOTED.

LIGHT SWITCHES SHALL BE "DECORA" STYLE & MOUNTED 42" ABOVE FINISHED FLOOR OR OTHERWISE NOTED.

PROVIDE DYNA LABELS ON ALL SWITCHES, PORTS & RECEPTACLES. PANEL SCHEDULE SHALL BE RETYPED TO REFLECT AS-BUILT CONDITIONS & INSERTED TO INSIDE OF ASSOCIATED PANEL DOOR SLEEVE PROTECTOR.

ALL ABANDONED (KNOWN & UNKNOWN) ELECTRICAL FIXTURES, COMPONENTS, RECEPTACLES & DATA CABLING SHALL BE REMOVED BACK TO SOURCE & TERMINATED AS PER APPLICABLE CODES. IF APPLICABLE, THIS INCLUDES WIRING CONTAINED IN HEADER DUCTS IN FLOOR.

RECONNECT & TEST ALL FIRE PREVENTION EQUIPMENT.

ELECTRICAL LEGEND	
TYPE	DESCRIPTION
	DUPLEX RECEPTACLE
	LIGHT SWITCH, SINGLE POLE
	DATA PORT
	VOICE (PHONE) PORT
	ELECTRICAL PANEL
	POWER POLE
	NETWORK RACK WITH COMPONENTS

- POWER AND SYSTEMS DEMOLITION NOTES: "X"**
- ALSO SEE NOTES & SPECIFICATIONS.
- ALL ABANDONED CABLES TO BE REMOVED FROM PLENUM SPACES AS REQUIRED BY LATEST CANADIAN ELECTRICAL CODE. DO NOT DISTURB OR DISCONNECT ANY WIRING & CABLING IN AREA OF WORK REQUIRED FOR OTHER AREAS.
- IN AREA OF WORK: REMOVE & DISCONNECT COMPONENTS WITH DESIGNATION "D" BACK TO SOURCE, UNLESS OTHERWISE NOTED INCLUDING:
    - ALL LUMINARIES & LIGHT SWITCHES (NOT SHOWN) BACK TO SOURCE.
    - ALL POWER & DATA (REMOVED BACK TO SOURCE) ON INTERIOR WALLS TO BE DEMOLISHED.
    - ALL NETWORK DATA CABLING IN WALL BACK TO SOURCE.
    - ALL POLE POLES WITH POWER & DATA BACK TO SOURCE.
    - ALL AUDIO/VIDEO CABLING NOT IN SERVICE BACK TO SOURCE.
    - ALL IBM TYPE (BNC) CABLING BACK TO SOURCE.
    - DOOR BELL SYSTEM (NOT SHOWN) BACK TO SOURCE.
  - IN AREA OF WORK:
    - CIRCUITS CONNECTED TO ELECTRICAL PANEL IN UNIT TO REMAIN.
    - REMOVE PHONE CABLING WITH CONNECTORS FROM DEMOLISHED WALLS & COIL-UP & SECURE TO CEILING SPACE FOR REUSE.
  - DISCONNECT ALL CABLING TO NETWORK RACK. RETURN NETWORK RACK & MOUNTED COMPONENTS BACK TO CONTRACT ADMINISTRATOR.
  - ALL FIRE DETECTION/PREVENTION DEVICES TO REMAIN (E.G., CEILING HEAT DETECTORS, SMOKE DETECTORS, FIRE ALARM PULL STATIONS, COMBINATION HORN STROBES, EMERGENCY SIGN/LIGHTING).

**CONFIDENTIAL**  
TO BE USE BY PERSONNEL WITH WINNIPEG POLICE SERVICE SECURITY CLEARANCE LEVEL 2.

No.	REVISION/DESCRIPTION	BY	DATE
SEAL			

DRAWN	DATE	CHECKED	DESIGNED	APPROVED
	2018.09.10	USER		APPROVAL

THE CITY OF WINNIPEG  
PLANNING, PROPERTY AND  
DEVELOPMENT DEPARTMENT  
MUNICIPAL ACCOMMODATIONS DIVISION  
3-65 GARRY STREET, R3C 4K4

**PROJECT**  
FORMER POST OFFICE TOWER  
DOOR RECONFIGURATION AT  
SKYWALK ENTRANCE TO WPS HQ  
266 GRAHAM AVENUE

**SHEET TITLE**  
PARTIAL SECOND FLOOR AND REFLECTED CEILING PLAN  
DEMOLITION  
POWER AND SYSTEMS

SCALE	PROJECT No:	SHEET No:
AS SHOWN	2016-081	E2