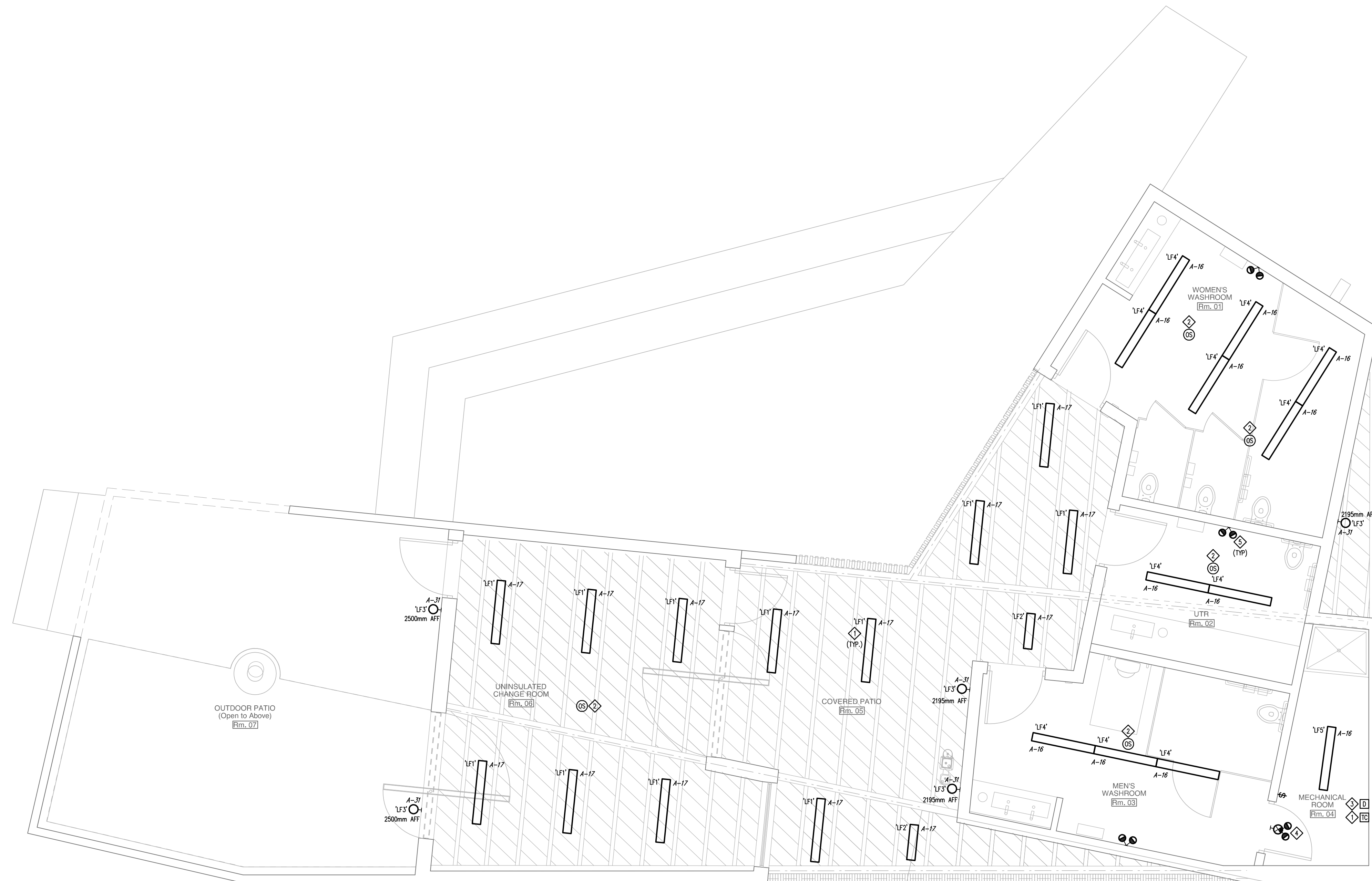


Owner

City of Winnipeg
185 King Street, Winnipeg, Manitoba
R3B 1J1
(204) 794-4418

No.	Date	Revision Notes
0	2018/07/27	Issued for Construction



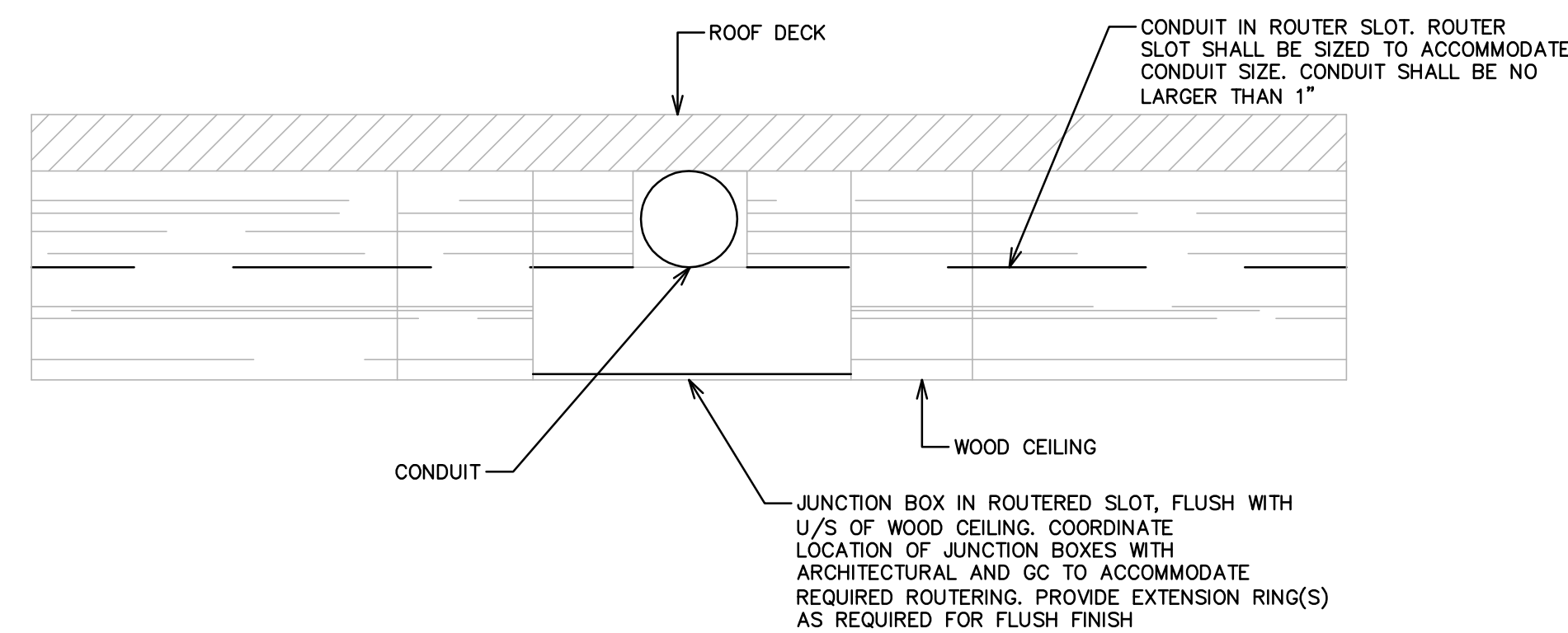
GENERAL NOTES:

- CONDUITS IN EXPOSED CEILING SHALL BE MOUNTED WITHIN ROUTERED SLOTS IN WOOD DECKING. JUNCTION BOX LAYOUT FOR ROUTERED CONDUITS SHALL BE COORDINATED WITH ARCHITECT PRIOR TO INSTALLATION. REFER TO ARCHITECTURAL AND DETAIL 2/EL2.0 FOR CONDUIT ROUTER SLOT DETAILS.

NOTES:

- ◇ PROVIDE PROGRAMMABLE TIME CLOCK TO CONTROL COVERED PATIO LUMINAIRES. COORDINATE TIME OF OPERATION WITH THE CITY.
- ◇ OCCUPANCY SENSOR SHALL USE PIR & ULTRASONIC TECHNOLOGY AND INCLUDE INTEGRAL DAYLIGHT HARVESTING CONTROL.
- ◇ PROVIDE DIMMER TO CONTROL COVERED PATIO LUMINAIRES.
- ◇ PROVIDE SELF-POWERED PICTOGRAM EXIT SIGN C/W TWO (2) 6W LED HEADS, AIMLITE CARPW12721M-2MD/6LA-WHT OR EQUAL. WIRE AND CONNECT TO AREA LIGHTING CIRCUIT. UNIT SHALL BE MOUNTED 300mm (1') ABOVE DOOR FRAME.
- ◇ PROVIDE 6W LED DOUBLE REMOTE HEAD, AIMLITE RMD2-126WLA-WHT OR EQUAL. WIRE AND CONNECT TO SELF-POWERED COMBINATION EXIT SIGN IN MECHANICAL ROOM. HEADS SHALL BE MOUNTED 2440MM (8') AFF.

1 MAIN FLOOR - LIGHTING LAYOUT
EL2.0 SCALE: 1:50



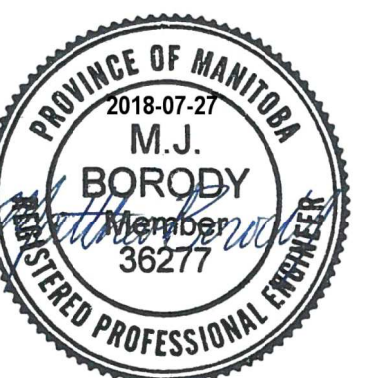
2 ROUTERED CONDUIT PATHWAY DETAIL
EL2.0 SCALE: N.T.S.

TYPE	MANUFACTURER	CATALOGUE NO.	VOLTS	LAMP	TOTAL WATTS FOR LUM	TYPE OF DRIVER	REMARKS
LF-1	LITHONIA OR EQUAL	VAP 4000LM FST WD MVOLT G210 30K 90CRI	120	3000K LED	33	0-10V DIMMING	4" VAPOUR TIGHT LED LUMINAIRE C/W FROSTED POLYCARBONATE LENS. SURFACE MOUNTED.
LF-2	LITHONIA OR EQUAL	DMW2 L24 2000LM PFL WD MVOLT GTZ1 30K 90CRI	120	3000K LED	18	0-10V DIMMING	2" VAPOUR TIGHT LED LUMINAIRE C/W FROSTED POLYCARBONATE LENS. SURFACE MOUNTED.
LF-3	RAB DESIGN OR EQUAL	HB101 B + GUARD	120	150W PAR38	150	N/A	WALL SCONCE C/W BLACK FINISH AND GUARD ACCESSORY.
LF-4	LITHONIA OR EQUAL	VT.L4 30L ADP MVOLT G21 LP830 DGA14	120	3000K LED	20	0-10V DIMMING	4" RECESSED LED LUMINAIRE, SURFACE MOUNTED
LF-5	LITHONIA OR EQUAL	ZLIN L48 5000LM PST MVOLT 30K 90CRI WH	120	3000K LED	42	ON/OFF	4" LED STRIP LIGHT, SURFACE MOUNTED.

10399
MCW / AGE
Consulting Professional Engineers
210-1021 Wellington Avenue
Winnipeg, Manitoba, R3H 0G4
Phone - (204) 779-7900 Fax - (204) 779-1119
E-Mail: mcw_age@mcw.com

APEGM
Certificate of Authorization
MCW/AGE Consulting
Professional Engineers
No. 589

THIS IS A PRINT OF A DOCUMENT THAT HAS BEEN ELECTRONICALLY SIGNED AND CERTIFIED BY THE ENGINEER. THE ORIGINAL DOCUMENT IS THE SOURCE OF THE INFORMATION.



This drawing must not be scaled. The contractors shall verify all dimensions and other data on site prior to commencement of work. Discrepancies, errors, and omissions are to be reported to the Architect prior to proceeding with the Work.

Drawings and specifications as instruments of service are the property of the Architect; the copyright in the same being reserved to him.

No reproduction or revision to these drawings may be made without the permission of the Architect, and when made, must bear his name. All prints to be returned to the Architect upon request.

Project

Crescent Drive Park Pavilion

Drawing

Main Floor -
Lighting Layout

Drawn By: MJB
Scale: 1:50
Reviewed By: MJB
Drawing No.: EL2.0

Date: July 2018
Project No.:
Revision No.: