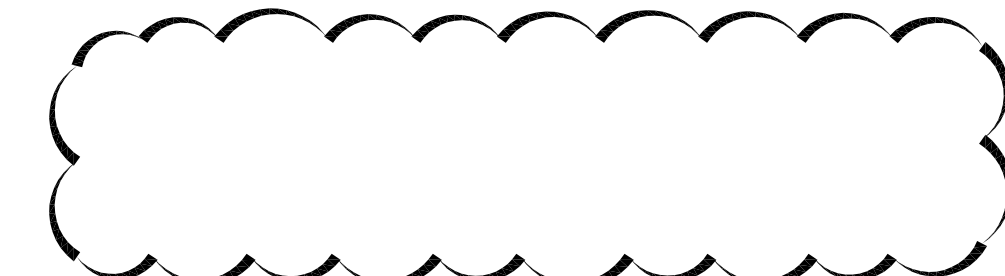
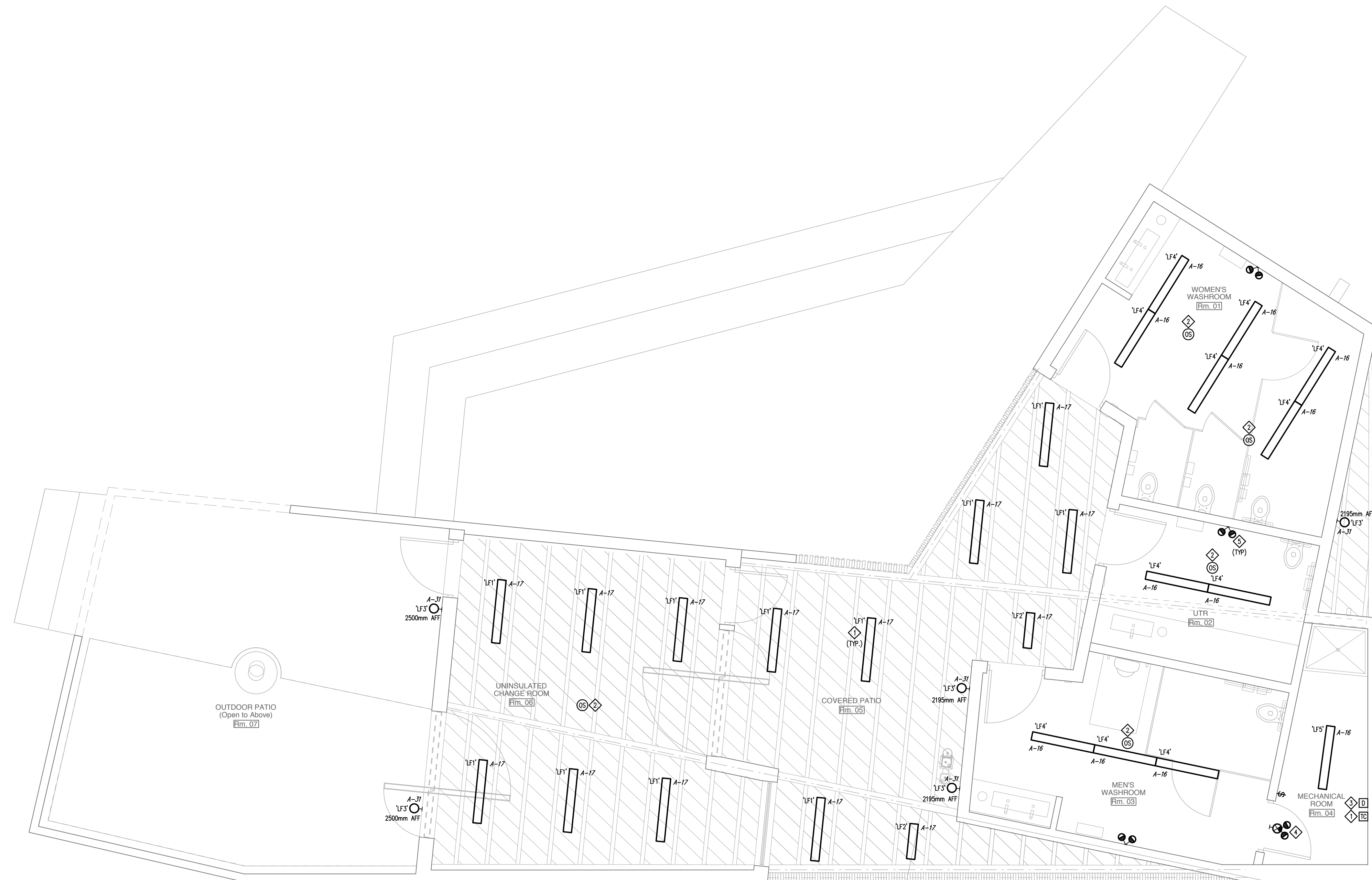


Owner

City of Winnipeg
185 King Street, Winnipeg, Manitoba
R3B 1J1
(204) 794-4418

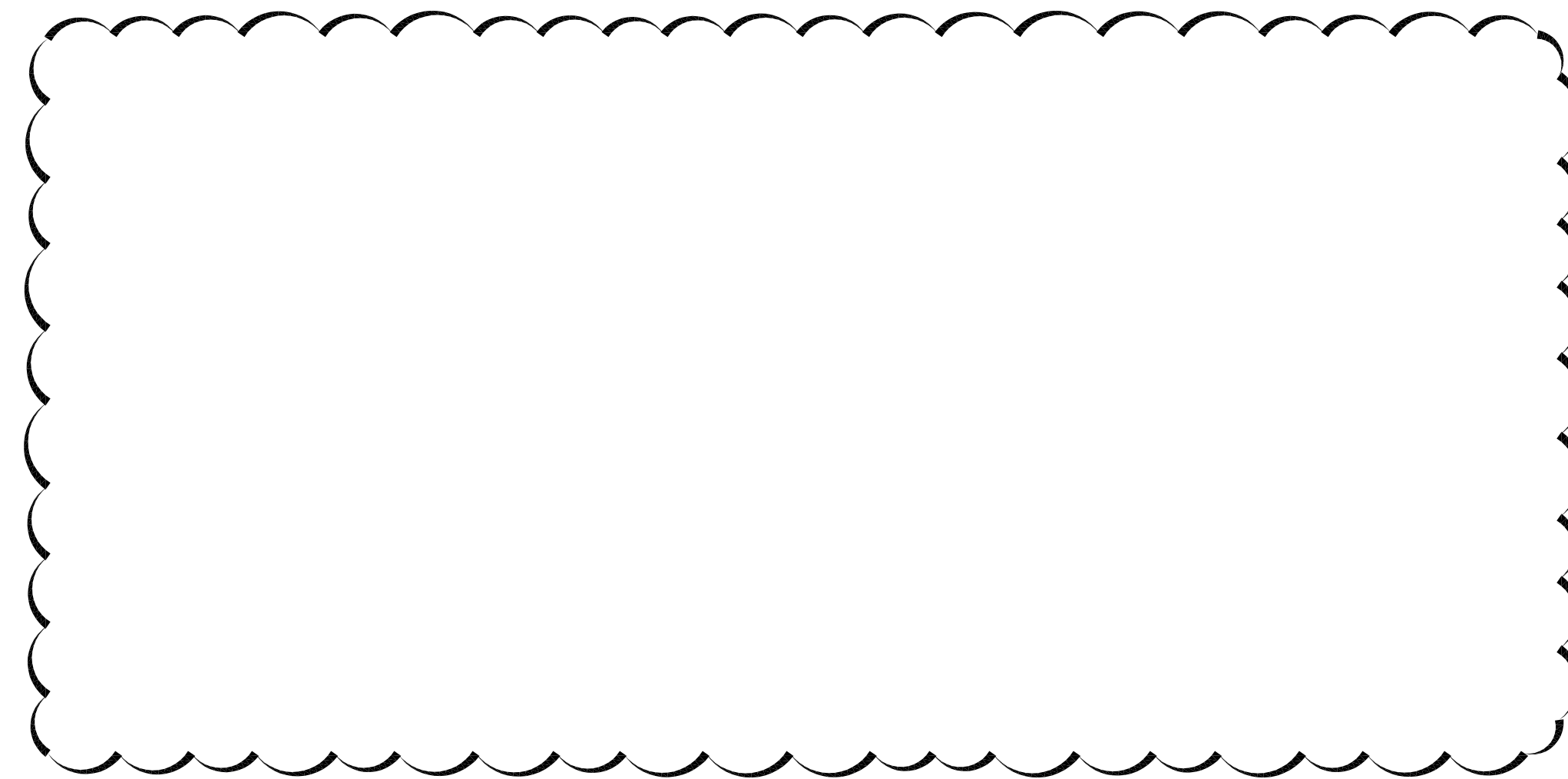
No.	Date	Revision Notes
0	2018/07/27	Issued for Construction
1	2018/09/25	Issued for Addendum 01



NOTES

- ◇ PROVIDE PROGRAMMABLE TIME CLOCK TO CONTROL COVERED PATIO LUMINAIRES. COORDINATE TIME OF OPERATION WITH THE CITY.
- ◇ OCCUPANCY SENSOR SHALL USE PIR & ULTRASONIC TECHNOLOGY AND INCLUDE INTEGRAL DAYLIGHT HARVESTING CONTROL.
- ◇ PROVIDE DIMMER TO CONTROL COVERED PATIO LUMINAIRES.
- ◇ PROVIDE SELF-POWERED PICTOGRAM EXIT SIGN C/W TWO (2) 6W LED HEADS, AIMLITE CARPW12721M-2MD/6LA-WHT OR EQUAL. WIRE AND CONNECT TO AREA LIGHTING CIRCUIT. UNIT SHALL BE MOUNTED 300mm (1') ABOVE DOOR FRAME.
- ◇ PROVIDE 6W LED DOUBLE REMOTE HEAD, AIMLITE RMD02-126W/LAWHT OR EQUAL. WIRE AND CONNECT TO SELF-POWERED COMBINATION EXIT SIGN IN MECHANICAL ROOM. HEADS SHALL BE MOUNTED 2440MM (8') AFF.

1 MAIN FLOOR - LIGHTING LAYOUT
EL2.0 SCALE: 1:50



LUMINAIRE SCHEDULE							
TYPE	MANUFACTURER	CATALOGUE NO.	VOLTS	LAMP	TOTAL WATTS FOR LUM	TYPE OF DRIVER	REMARKS
LF-1	LITHONIA OR EQUAL	VAP 4000LM FST WD MVOLT GZ10 30K 90CRI	120	3000K LED	33	0-10V DIMMING	4' VAPOUR TIGHT LED LUMINAIRE C/W FROSTED POLYCARBONATE LENS. SURFACE MOUNTED.
LF-2	LITHONIA OR EQUAL	DMW2 L24 2000LM PFL WD MVOLT GTZ1 30K 90CRI	120	3000K LED	18	0-10V DIMMING	2' VAPOUR TIGHT LED LUMINAIRE C/W FROSTED POLYCARBONATE LENS. SURFACE MOUNTED.
LF-3	RAB DESIGN OR EQUAL	HB101 B + GUARD	120	150W PAR38	150	N/A	WALL SCONCE C/W BLACK FINISH AND GUARD ACCESSORY
LF-4	PHILIPS OR EQUAL	2211LGLN-12-7-1-E-SF	120	3000K LED	25.1	0-10V DIMMING	4' RECESSED LED LUMINAIRE, SURFACE MOUNTED
LF-5	LITHONIA OR EQUAL	ZLIN L48 3000LM PST MVOLT 30K 90CRI WH	120	3000K LED	42	ON/OFF	4' TUB STRIP LIGHT SURFACE MOUNTED

10399
MCW / AGE
Consulting Professional Engineers
270-1521 Wellington Avenue
Winnipeg, Manitoba, R3H 0G4
Phone - (204) 779-7900 Fax - (204) 779-1119
E-Mail: mcw_age@mcw.com

APEGN
Certificate of Authorization
MCW/AGE Consulting
Professional Engineers
No. 589

THIS IS A PRINT OF A DOCUMENT THAT HAS BEEN ELECTRONICALLY SIGNED AND CERTIFIED WITH TECHNOLOGY PROVIDED BY THE ARCHITECTURE & ELECTRICAL BOARD.

This drawing must not be scaled. The contractors shall verify all dimensions and other data on site prior to commencement of work. Discrepancies, errors, and omissions are to be reported to the Architect prior to proceeding with the Work.

Drawings and specifications as instruments of service are the property of the Architect; the copyright in the same being reserved to him. No reproduction or revision to these drawings may be made without the permission of the Architect, and when made, must bear his name. All prints to be returned to the Architect upon request.

Project
Crescent Drive Park Pavilion

Drawing
**Main Floor -
Lighting Layout**

Drawn By
MJB
Scale
1:50
Reviewed By
MJB
Drawing No.
EL2.0R1

Date
July 2018
Project No.
Revision No.