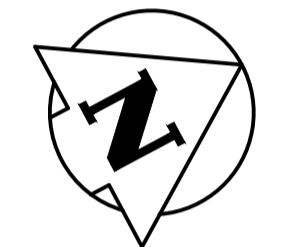
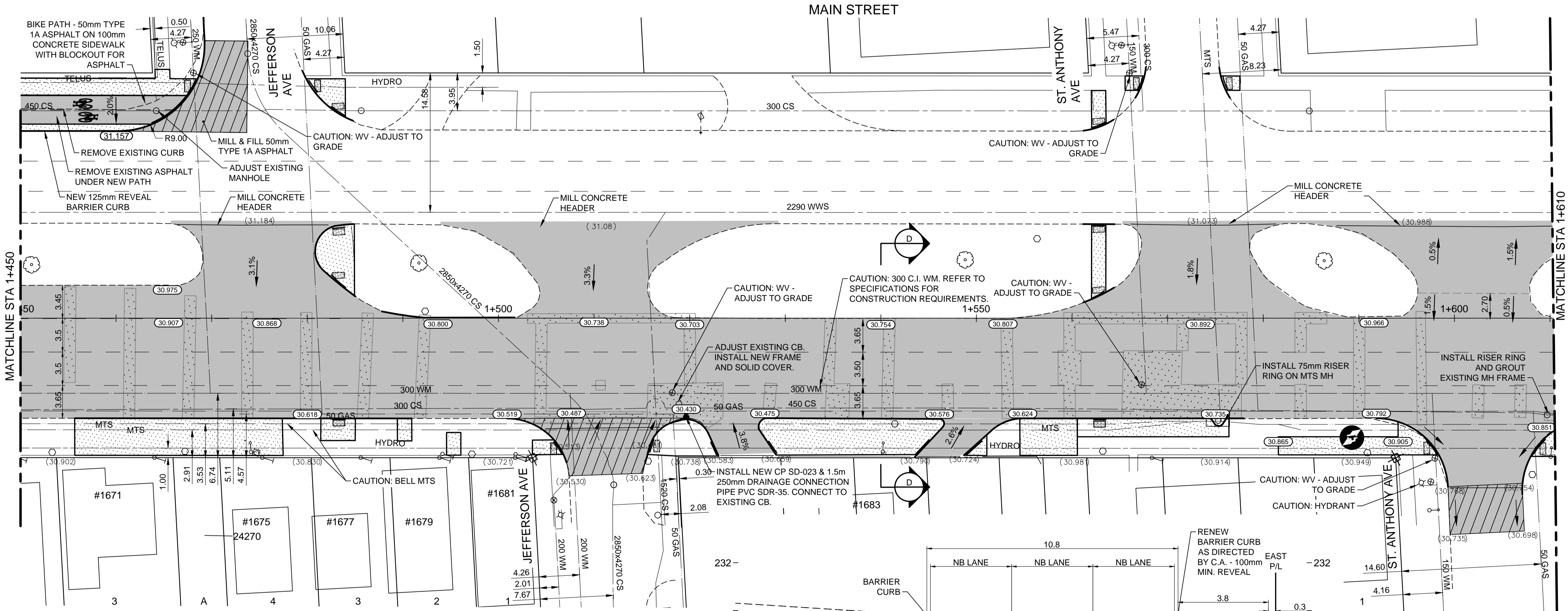


1+450 1+500 1+550 1+600



- NOTES:**
- WORKS IN CLOSE PROXIMITY TO THE 400mm FEEDERMAIN SHALL BE DONE IN ACCORDANCE WITH E18 OF THE SPECIFICATION. FURTHER TO E18.10.1, VIBRATORY COMPACTION SHALL NOT BE PERMITTED WITHIN 3.0m OF THE CENTERLINE OF THE 400mm FEEDERMAIN.
 - ADJUST ALL WATER VALVES, MANHOLES AND CATCH BASINS TO GRADE.
 - ADJUST ALL WATER SERVICE VALVES TO GRADE, EXISTING SERVICE VALVES ARE NOT SHOWN HERE BUT ARE WITHIN THE SIDEWALK RENEWAL AREA.

WARNING

IF POWER EQUIPMENT OR EXPLOSIVES ARE TO BE USED FOR EXCAVATION ON THIS PROJECT THE CONTRACTOR MUST:
 1) NOTIFY THE GAS COMPANY OF THE PROPOSED LOCATION OF EXCAVATION.
 2) TAKE PRECAUTION TO AVOID DAMAGE TO GAS COMPANY INSTALLATIONS.
 SEE PROVINCIAL REGULATION 140/92 FOR DETAILS

METRIC
 WHOLE NUMBERS INDICATE MILLIMETRES
 DECIMALIZED NUMBERS INDICATE METRES

D SECTION AT STA 1+540
 1:100H 1:50V

EXISTING	LEGEND-PLAN	PROPOSED	EXISTING	LEGEND-PLAN	PROPOSED	EXISTING	LEGEND-PROFILE	PROPOSED
150 WM	WATERMAIN	150 WM	HYDRO	HYDRO	150 WM	WATERMAIN	150 WM	WATERMAIN
Hydrant	HYDRANT	Hydrant	M.T.S.	M.T.S.	Hydrant	HYDRANT, VALVE	Hydrant	HYDRANT, VALVE
Valve	VALVE	Valve	CONCRETE	CONCRETE	Valve	LAND DRAINAGE SEWER	Valve	LAND DRAINAGE SEWER
300 LDS	LAND DRAINAGE SEWER	300 LDS	ASPHALT	ASPHALT	300 LDS	WASTE WATER SEWER	300 LDS	WASTE WATER SEWER
250 WWS	WASTE WATER SEWER	250 WWS	SIDEWALK	SIDEWALK	250 WWS	C PROFILE	250 WWS	C PROFILE
Manhole	MANHOLE	Manhole	PROPERTY LINE	PROPERTY LINE	Manhole	NORTH OR WEST GUTTER	Manhole	NORTH OR WEST GUTTER
Catch Basin	CATCH BASIN	Catch Basin	SURVEY BAR	SURVEY BAR	Catch Basin	SOUTH OR EAST GUTTER	Catch Basin	SOUTH OR EAST GUTTER
Curb Inlet	CURB INLET	Curb Inlet	GLAS GRID	GLAS GRID	Curb Inlet	NORTH OR WEST P	Curb Inlet	NORTH OR WEST P
Junctions	JUNCTIONS	Junctions	ELEVATION	ELEVATION	Junctions	SOUTH OR EAST P	Junctions	SOUTH OR EAST P
Culvert	CULVERT	Culvert	SIDEWALK RAMP	SIDEWALK RAMP	Culvert	NORTH OR WEST DITCH	Culvert	NORTH OR WEST DITCH
Gas	GAS	Gas	MILL EXISTING ASPHALT	MILL EXISTING ASPHALT	Gas	SOUTH OR EAST DITCH	Gas	SOUTH OR EAST DITCH

LOCATION APPROVED UNDERGROUND STRUCTURES
 SUPV. U/G STRUCTURES COMMITTEE DATE
NOTE:
 LOCATION OF UNDERGROUND STRUCTURES AS SHOWN ARE BASED ON THE BEST INFORMATION AVAILABLE BUT NO GUARANTEE IS GIVEN THAT ALL EXISTING UTILITIES ARE SHOWN OR THAT THE GIVEN LOCATIONS ARE EXACT. CONFIRMATION OF EXISTENCE AND EXACT LOCATION OF ALL SERVICES MUST BE OBTAINED FROM THE INDIVIDUAL UTILITIES BEFORE PROCEEDING WITH CONSTRUCTION.

NO.	REVISIONS	DATE	BY
2	ISSUED FOR TENDER	19.01.25	S.R.S.
1	ISSUED FOR U/G STRUCTURES REVIEW	18.12.12	S.R.S.
0	ISSUED FOR 98% REVIEW	18.11.08	S.R.S.

Stantec
 500 - 311 Portage Avenue, Winnipeg MB
 www.stantec.com

DESIGNED BY: T.G.J.D. CHECKED BY: D.M.
 DRAWN BY: M.K. APPROVED BY: S.R.S.

HOR. SCALE: 1:250
 VERTICAL: 1:10

RELEASED FOR CONSTRUCTION: DATE
 2018.11.08

ENGINEER'S SEAL
 PROVINCE OF MANITOBA
 S.R. SUDERMAN
 Member
 23997
 REGISTERED PROFESSIONAL ENGINEER

CONSULTANT DRAWING NO.
 C-204

THE CITY OF WINNIPEG
 PUBLIC WORKS DEPARTMENT
 ENGINEERING DIVISION

2019 REGIONAL STREET RENEWAL PROGRAM
 MAIN STREET
 STA 1+450 TO STA 1+610
 ROADWORKS

SHEET OF 7 25
 CAD FILE DRAWING NUMBER 07620c-201-920.dwg
 CITY DRAWING NUMBER P-3502-7

VA:1137\active\113707620\0300_drawing\0302_sheet_files\02_civil\07620c-201-920.dwg
 2019/01/29 2:59 PM By: Kjarntson, Melanie