

METRIC
WHOLE NUMBERS INDICATE MILLIMETRES
DECIMALIZED NUMBERS INDICATE METRES

WARNING
IF POWER EQUIPMENT OR EXPLOSIVES ARE TO BE USED FOR EXCAVATION ON THIS PROJECT THE CONTRACTOR MUST:
1) NOTIFY THE GAS COMPANY OF THE PROPOSED LOCATION OF EXCAVATION.
2) TAKE PRECAUTION TO AVOID DAMAGE TO GAS COMPANY INSTALLATIONS.
SEE PROVINCIAL REGULATION 140/92 FOR DETAILS

- NOTES:
- WORKS IN CLOSE PROXIMITY TO THE 400mm FEEDERMAIN SHALL BE DONE IN ACCORDANCE WITH E18 OF THE SPECIFICATION. FURTHER TO E18.10.1, VIBRATORY COMPACTION SHALL NOT BE PERMITTED WITHIN 3.0m OF THE CENTERLINE OF THE 400mm FEEDERMAIN.
 - ADJUST ALL WATER VALVES, MANHOLES AND CATCH BASINS TO GRADE.
 - ADJUST ALL WATER SERVICE VALVES TO GRADE, EXISTING SERVICE VALVES ARE NOT SHOWN HERE BUT ARE WITHIN THE SIDEWALK RENEWAL AREA.

SECTION AT STA 1+360
1:100H 1:50V

EXISTING	LEGEND-PLAN	PROPOSED	EXISTING	LEGEND-PLAN	PROPOSED	EXISTING	LEGEND-PROFILE	PROPOSED
150 WM	WATERMAIN	150 WM	HYDRO	M.T.S.	150 WM	WATERMAIN	150 WM	HYDRANT, VALVE
300 LDS	LAND DRAINAGE SEWER	300 LDS	300 LDS	CONCRETE	300 LDS	LAND DRAINAGE SEWER	300 LDS	LAND DRAINAGE SEWER
250 WWS	WASTE WATER SEWER	250 WWS	250 WWS	ASPHALT	250 WWS	WASTE WATER SEWER	250 WWS	WASTE WATER SEWER
300 CS	300 CS	300 CS	300 CS	SIDEWALK	300 CS	SIDEWALK	300 CS	PROPERTY LINE
300 WM	MANHOLE	300 WM	300 WM	300 WM	300 WM	MANHOLE	300 WM	NORTH OR WEST GUTTER
300 CS	CATCH BASIN	300 CS	300 CS	300 CS	300 CS	CATCH BASIN	300 CS	SOUTH OR EAST GUTTER
300 WM	CURB INLET	300 WM	300 WM	300 WM	300 WM	CURB INLET	300 WM	NORTH OR WEST P
300 WM	JUNCTIONS	300 WM	300 WM	300 WM	300 WM	JUNCTIONS	300 WM	SOUTH OR EAST P
300 WM	CULVERT	300 WM	300 WM	300 WM	300 WM	CULVERT	300 WM	NORTH OR WEST DITCH
300 WM	GAS	300 WM	300 WM	300 WM	300 WM	GAS	300 WM	SOUTH OR EAST DITCH
300 WM	EXISTING	300 WM	300 WM	300 WM	300 WM	EXISTING	300 WM	
300 WM	LEGEND-PLAN	300 WM	300 WM	300 WM	300 WM	LEGEND-PLAN	300 WM	
300 WM	PROPOSED	300 WM	300 WM	300 WM	300 WM	PROPOSED	300 WM	
300 WM	EXISTING	300 WM	300 WM	300 WM	300 WM	EXISTING	300 WM	
300 WM	LEGEND-PLAN	300 WM	300 WM	300 WM	300 WM	LEGEND-PROFILE	300 WM	
300 WM	PROPOSED	300 WM	300 WM	300 WM	300 WM	PROPOSED	300 WM	

LOCATION APPROVED UNDERGROUND STRUCTURES

SUPV. U/G STRUCTURES COMMITTEE

NOTE:
LOCATION OF UNDERGROUND STRUCTURES AS SHOWN ARE BASED ON THE BEST INFORMATION AVAILABLE BUT NO GUARANTEE IS GIVEN THAT ALL EXISTING UTILITIES ARE SHOWN OR THAT THE GIVEN LOCATIONS ARE EXACT. CONFIRMATION OF EXISTENCE AND EXACT LOCATION OF ALL SERVICES MUST BE OBTAINED FROM THE INDIVIDUAL UTILITIES BEFORE PROCEEDING WITH CONSTRUCTION.

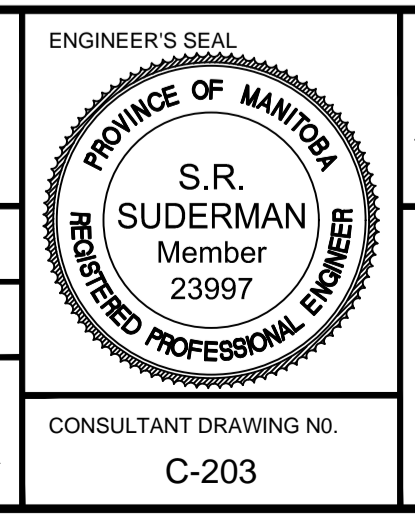
NO.	REVISIONS	DATE	BY
2	ISSUED FOR TENDER	19.01.25	S.R.S.
1	ISSUED FOR U/G STRUCTURES REVIEW	18.12.12	S.R.S.
0	ISSUED FOR 98% REVIEW	18.11.08	S.R.S.

Stantec
500 - 311 Portage Avenue, Winnipeg MB
www.stantec.com

DESIGNED BY: T.G.J.D.
CHECKED BY: D.M.
DRAWN BY: M.K.
APPROVED BY: S.R.S.

HOR. SCALE: 1:250
VERTICAL: 1:10

RELEASED FOR CONSTRUCTION:
DATE



THE CITY OF WINNIPEG
PUBLIC WORKS DEPARTMENT
ENGINEERING DIVISION

2019 REGIONAL STREET RENEWAL PROGRAM
MAIN STREET
STA 1+290 TO STA 1+450
ROADWORKS

CONSULTANT DRAWING NO. C-203

SHEET OF 6 25
CAD FILE DRAWING NUMBER: 07620c-201-920.dwg
CITY DRAWING NUMBER: P-3502-6

VA:1137\active\113707620\0300_drawing\0302_sheet_files\02_civil\07620c-201-920.dwg
2019/01/29 3:00 PM By: kjortansson, Melanie