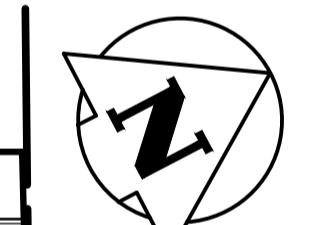
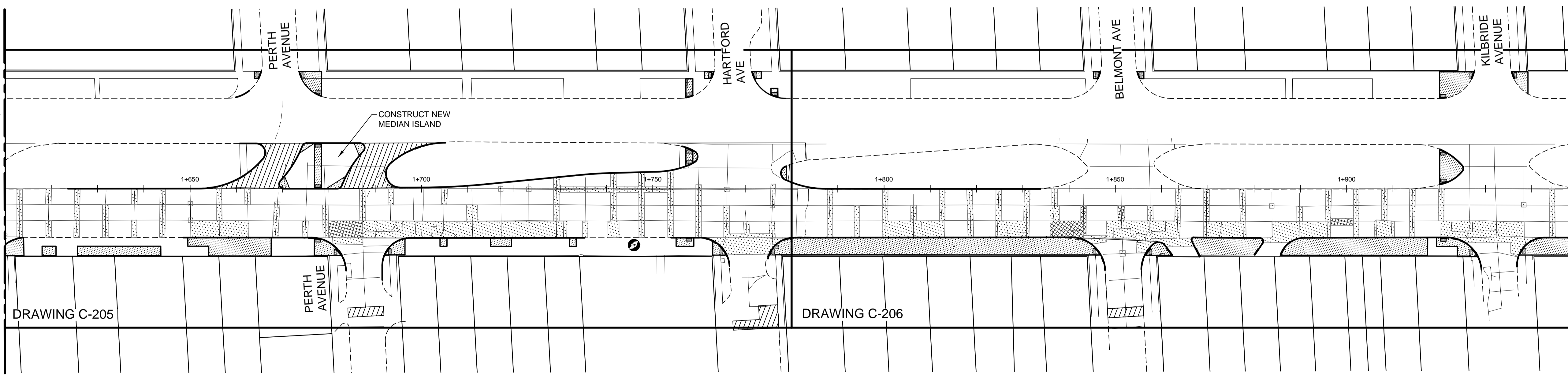
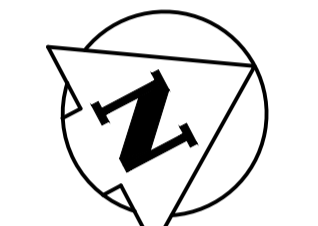
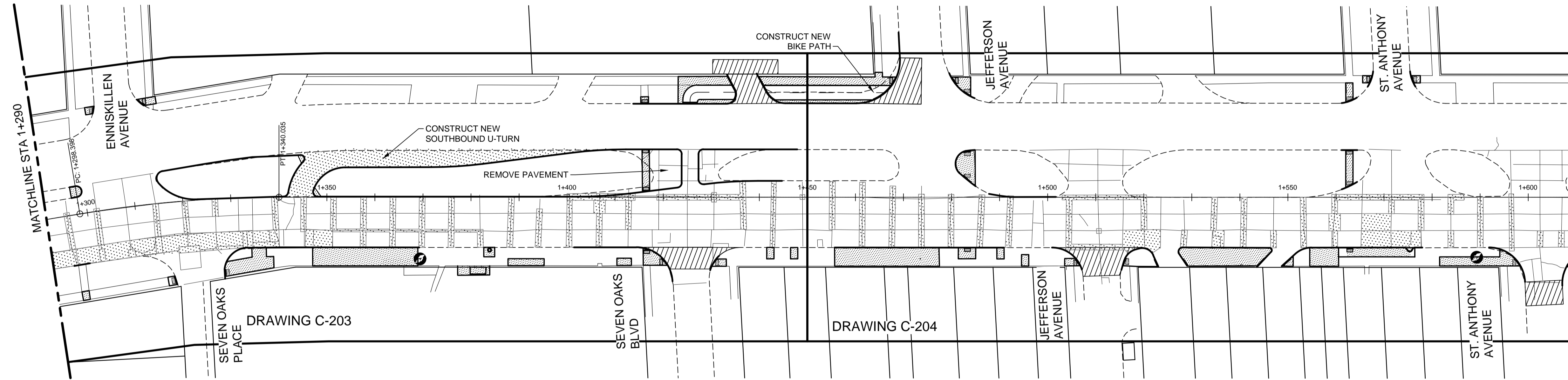


- NOTES**
- EXISTING PAVEMENT PATCHES AND CONCRETE JOINTS ARE SHOWN ON DRAWING FOR INFORMATION AND REFERENCE.
 - THE CONTRACT ADMINISTRATOR TO MARK OUT ALL PAVEMENT, CURB AND SIDEWALK REPAIR LOCATIONS PRIOR TO SAW-CUTTING.
 - NEW ASPHALT LIMITS ARE NOT SHOWN FOR CLARITY.
 - RENEW EXISTING BARRIER CURB WITH 100mm REVEAL SEPARATE BARRIER CURB AS DIRECTED BY CONTRACT ADMINISTRATOR.
 - MATCH EXISTING RADII FOR CURB RENEWAL UNLESS OTHERWISE NOTED.
 - REFER TO RESPECTIVE SHEET IDENTIFIED ON PLAN FOR ADDITIONAL DETAILS AND GRADING.
 - SEE SPECIFICATION FOR REQUIREMENTS FOR WORKING NEAR EXISTING 300 CAST IRON WATERMAIN.
 - CURB RENEWAL ASSOCIATED WITH 'B' REPAIRS NOT SHOWN FOR CLARITY.



VA:11370\active\113707620\0300_drawing\0302_sheet_files\02_civil\07620c-101-920.dwg
 2019/01/29 2:57 PM By: Kjarntson, Melanie

150 WM	WATERMAIN	150 WM	HYDRO	CONCRETE
+	HYDRANT	+	M.T.S.	ASPHALT
+	VALVE	+	PROPERTY LINE	SIDEWALK
300 LPS	LAND DRAINAGE SEWER	300 LPS	SURVEY BAR	MILL EXISTING ASPHALT
250 WWS	WASTE WATER SEWER	250 WWS (31.334)	ELEVATION (32.231)	GLAS GRID
○	MANHOLE	○	SIDEWALK RAMP	
□	CATCH BASIN			
▽	CURB INLET			
+	JUNCTIONS			
+	CULVERT			
+	GAS			
EXISTING	LEGEND-PLAN	PROPOSED	EXISTING	LEGEND-PLAN
			PROPOSED	

LOCATION APPROVED UNDERGROUND STRUCTURES

SUPV. U/G STRUCTURES COMMITTEE DATE

NOTE:
 LOCATION OF UNDERGROUND STRUCTURES AS SHOWN ARE BASED ON THE BEST INFORMATION AVAILABLE BUT NO GUARANTEE IS GIVEN THAT ALL EXISTING UTILITIES ARE SHOWN OR THAT THE GIVEN LOCATIONS ARE EXACT. CONFIRMATION OF EXISTENCE AND EXACT LOCATION OF ALL SERVICES MUST BE OBTAINED FROM THE INDIVIDUAL UTILITIES BEFORE PROCEEDING WITH CONSTRUCTION.

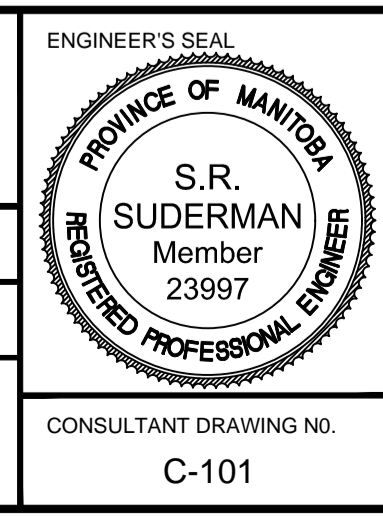
NO.	REVISIONS	DATE	BY
2	ISSUED FOR TENDER	19.01.25	S.R.S.
1	ISSUED FOR U/G STRUCTURES REVIEW	18.12.12	S.R.S.
0	ISSUED FOR 98% REVIEW	18.11.08	S.R.S.

Stantec
 500 - 311 Portage Avenue, Winnipeg MB
 www.stantec.com

DESIGNED BY: T.G./J.D. CHECKED BY: D.M.
 DRAWN BY: M.K. APPROVED BY: S.R.S.

HOR. SCALE: 1:500
 VERTICAL: _____

RELEASED FOR CONSTRUCTION: _____
 DATE: 2018.11.08



THE CITY OF WINNIPEG
 PUBLIC WORKS DEPARTMENT
 ENGINEERING DIVISION

2019 REGIONAL STREET RENEWAL PROGRAM
 MAIN STREET
 FROM McADAM AVE TO KILBRIDE AVE
 CONCRETE PAVEMENT, CURB & SIDEWALK REPAIRS

SHEET OF 2 25
 CAD FILE DRAWING NUMBER 07620c-101-920.dwg
 CITY DRAWING NUMBER P-3502-2

CONSULTANT DRAWING NO. C-101

