

**STAGE 3**  
 JULY 21 - SEPTEMBER 4, 2019  
 MEDIAN LANE FROM McADAM AVENUE TO ROYAL AVENUE, U-TURN AND  
 MEDIAN IMPROVEMENTS.  
 CRITICAL STAGE DATE SEPTEMBER 4, 2019  
 -TEMPORARY TRANSIT STOP PULL-INS TO WORK AREA IS REQUIRED.  
 -CONTRACTOR TO STAGE REPAIRS TO ACCOMMODATE.  
 -MEDIAN CLOSURES PERMITTED AS DIRECTED BY THE CONTRACT  
 ADMINISTRATOR.

- TWO LANES OPEN DURING PM PEAK
- TWO LANES OPEN ALL TIMES NORTH OF PARTRIDGE AVE.
- PAVEMENT REPAIRS LEFT TURN TO LEILA AVENUE.

STAGE 3 WORK AREA

**ENGINEERS  
 GEOSCIENTISTS  
 MANITOBA**  
 Certificate of Authorization  
 Stantec Consulting Ltd.  
 No. 1301

V:\13707620\0300\_drawing\0302\_sheet\_files\02\_chil\07620c-107-920.dwg  
 2019/01/29 3:23 PM By: Kiprantonson, Melanie

150 WM	WATERMAIN	150 WM	HYDRO	150 WM	WATERMAIN	150 WM
+	HYDRANT	+	M.T.S.	+	HYDRANT, VALVE	+
+	VALVE	+	CONCRETE	+	LAND DRAINAGE SEWER	+
300 LDS	LAND DRAINAGE SEWER	300 LDS	ASPHALT	300 LDS	WASTE WATER SEWER	300 LDS
250 WWS	WASTE WATER SEWER	250 WWS	SIDEWALK	250 WWS	PROPERTY LINE	250 WWS
○	MANHOLE	○	PROPERTY LINE	○	NORTH OR WEST GUTTER	○
○	CATCH BASIN	○	GLAS GRID	○	SOUTH OR EAST GUTTER	○
○	CURB INLET	○	ELEVATION	○	NORTH OR WEST P	○
+	JUNCTIONS	+	SIDEWALK RAMP	+	SOUTH OR EAST P	+
+	CULVERT	+	EXISTING	+	NORTH OR WEST DITCH	+
+	GAS	+	PROPOSED	+	SOUTH OR EAST DITCH	+
+	EXISTING	+	LEGEND-PLAN	+	LEGEND-PROFILE	+
+	LEGEND-PLAN	+	PROPOSED	+	PROPOSED	+

**LOCATION APPROVED  
 UNDERGROUND STRUCTURES**

SUPV. U/G STRUCTURES  
 COMMITTEE

DATE

**NOTE:**  
 LOCATION OF UNDERGROUND STRUCTURES AS  
 SHOWN ARE BASED ON THE BEST INFORMATION  
 AVAILABLE BUT NO GUARANTEE IS GIVEN  
 THAT ALL EXISTING UTILITIES ARE SHOWN OR  
 THAT THE GIVEN LOCATIONS ARE EXACT.  
 CONFIRMATION OF EXISTENCE AND EXACT  
 LOCATION OF ALL SERVICES MUST BE  
 OBTAINED FROM THE INDIVIDUAL UTILITIES  
 BEFORE PROCEEDING WITH CONSTRUCTION.

B.M.	ELEV.			
2	ISSUED FOR TENDER	19.01.25	S.R.S.	
1	ISSUED FOR U/G STRUCTURES REVIEW	18.12.12	S.R.S.	
0	ISSUED FOR 98% REVIEW	18.11.08	S.R.S.	
NO.	REVISIONS	DATE	BY	

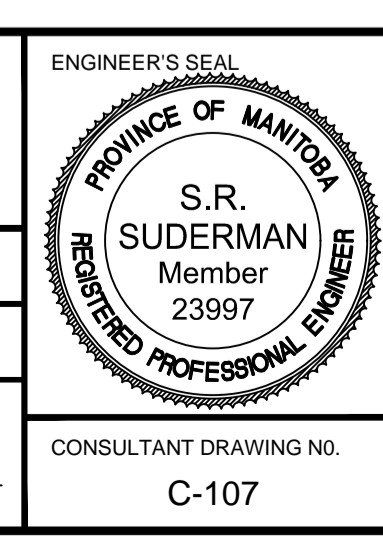
**Stantec**  
 500 - 311 Portage Avenue, Winnipeg MB  
 www.stantec.com

DESIGNED BY: T.G./J.D.      CHECKED BY: D.M.  
 DRAWN BY: M.K.              APPROVED BY: S.R.S.

HOR. SCALE: 1:500  
 VERTICAL:

RELEASED FOR CONSTRUCTION: \_\_\_\_\_  
 DATE: \_\_\_\_\_

CONSULTANT DRAWING NO. C-107



**THE CITY OF WINNIPEG**  
 PUBLIC WORKS DEPARTMENT  
 ENGINEERING DIVISION

2019 REGIONAL STREET RENEWAL PROGRAM  
 MAIN STREET  
 McADAM AVE TO KILBRIDE AVE  
 STAGE 3

SHEET 21 OF 25  
 CAD FILE DRAWING NUMBER 07620c-107-920.dwg  
 CITY DRAWING NUMBER P-3502-21