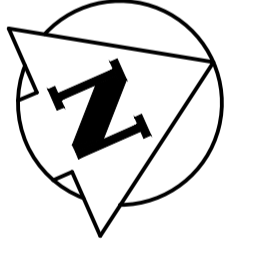
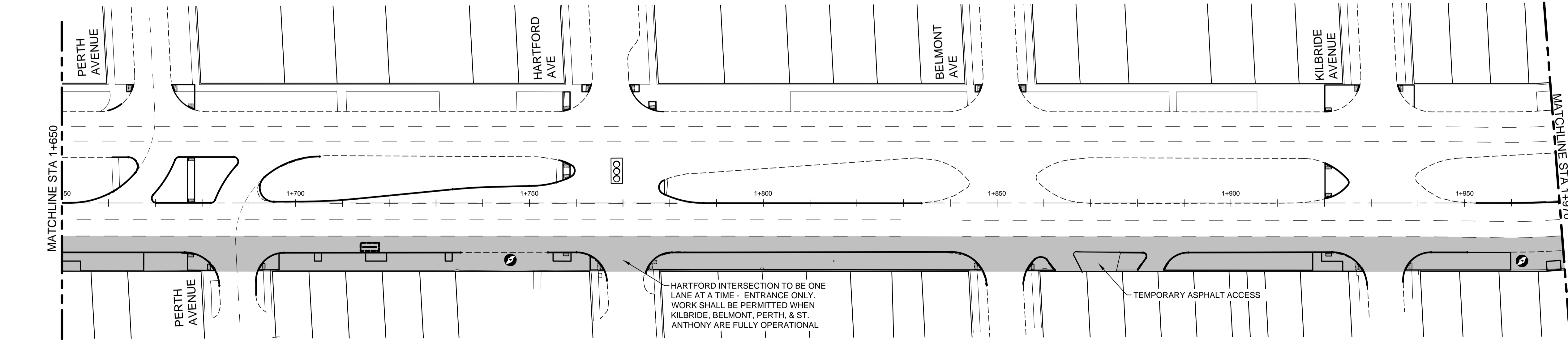
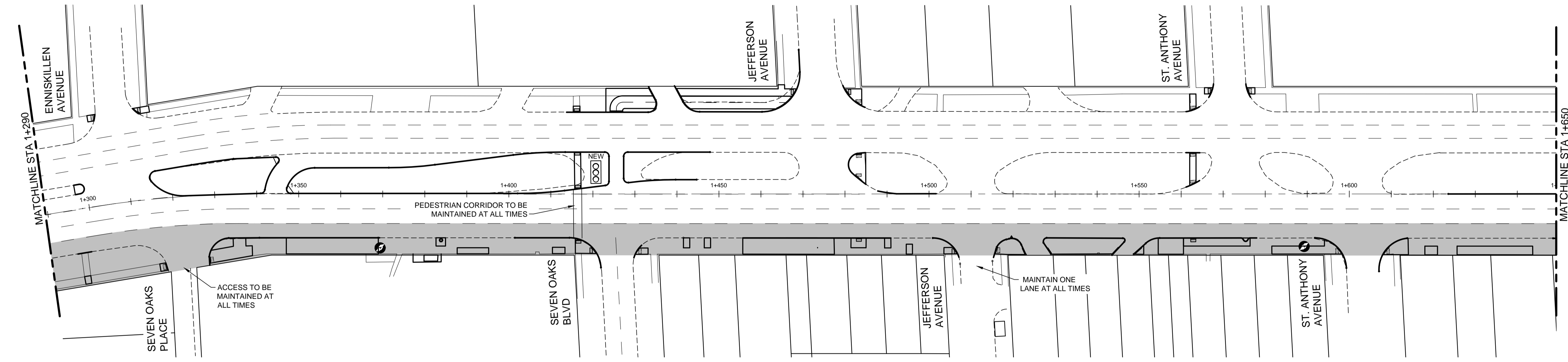
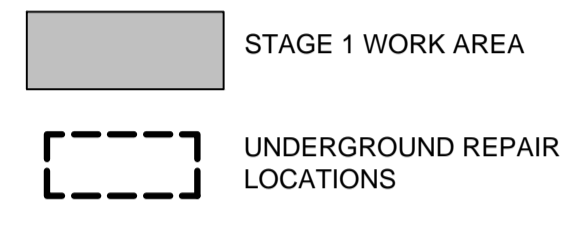


**STAGE 0**  
UNDERGROUND WORKS APRIL 29 - MAY 17, 2019  
CRITICAL STAGE DATE: MAY 17, 2019

**STAGE 1**  
GUTTER LANE & SIDEWALK - MAY 22 - JULY 1, 2019

- TWO LANES OPEN DURING PM PEAK
- TWO LANES NORTH OF PARTRIDGE OPEN AT ALL TIMES
- SAW CUTTING PERMITTED PRIOR TO MAY 22 AS APPROVED BY CONTRACT ADMINISTRATOR
- SIDEWALK TO BE STAGED TO MAINTAIN ACCESS TO BUSINESS AT ALL TIMES.
- TEMPORARY TRANSIT STOP PULL-INS TO WORK AREA IS REQUIRED.
- CONTRACTOR TO STAGE REPAIRS TO ACCOMMODATE.
- MEDIAN CLOSURES PERMITTED AS DIRECTED BY THE CONTRACT ADMINISTRATOR.



**ENGINEERS  
GEOSCIENTISTS  
MANITOBA**  
Certificate of Authorization  
Stantec Consulting Ltd.  
No. 1301

V:\1137\active\113707620\0300\_drawing\0302\_sheet\_files\02\_civil\07620c-103-920.dwg  
 2019/01/29 3:12 PM By: Kiprison, Melanie

150 WM	WATERMAIN	150 WM	HYDRO	150 WM	WATERMAIN	150 WM
+	HYDRANT	+	M.T.S.	+	HYDRANT, VALVE	+
+	VALVE	+	CONCRETE	+	LAND DRAINAGE SEWER	+
300 LDS	LAND DRAINAGE SEWER	300 LDS	ASPHALT	300 LDS	WASTE WATER SEWER	300 LDS
250 WWS	WASTE WATER SEWER	250 WWS	SIDEWALK	250 WWS	Q PROFILE	250 WWS
○	MANHOLE	○	PROPERTY LINE	○	NORTH OR WEST GUTTER	○
○	CATCH BASIN	○	SURVEY BAR	○	SOUTH OR EAST GUTTER	○
○	CURB INLET	○	GLAS GRID	○	NORTH OR WEST P	○
+	JUNCTIONS	+	ELEVATION	+	SOUTH OR EAST P	+
+	CULVERT	+	SIDEWALK RAMP	+	NORTH OR WEST DITCH	+
+	GAS	+		+	SOUTH OR EAST DITCH	+
---	EXISTING	---	LEGEND-PLAN	---	LEGEND-PROFILE	---
---	LEGEND-PLAN	---	PROPOSED	---	PROPOSED	---
---	PROPOSED	---	EXISTING	---	EXISTING	---

**LOCATION APPROVED UNDERGROUND STRUCTURES**

SUPV. U/G STRUCTURES COMMITTEE DATE

**NOTE:**  
LOCATION OF UNDERGROUND STRUCTURES AS SHOWN ARE BASED ON THE BEST INFORMATION AVAILABLE BUT NO GUARANTEE IS GIVEN THAT ALL EXISTING UTILITIES ARE SHOWN OR THAT THE GIVEN LOCATIONS ARE EXACT. CONFIRMATION OF EXISTENCE AND EXACT LOCATION OF ALL SERVICES MUST BE OBTAINED FROM THE INDIVIDUAL UTILITIES BEFORE PROCEEDING WITH CONSTRUCTION.

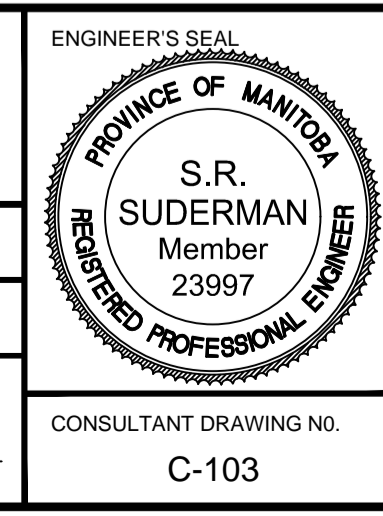
B.M. ELEV.			
2	ISSUED FOR TENDER	19.01.25	S.R.S.
1	ISSUED FOR U/G STRUCTURES REVIEW	18.12.12	S.R.S.
0	ISSUED FOR 98% REVIEW	18.11.08	S.R.S.
NO.	REVISIONS	DATE	BY

**Stantec**  
500 - 311 Portage Avenue, Winnipeg MB  
www.stantec.com

DESIGNED BY: T.G./J.D.      CHECKED BY: D.M.  
DRAWN BY: M.K.              APPROVED BY: S.R.S.

HOR. SCALE: 1:500  
VERTICAL:                      RELEASED FOR CONSTRUCTION:      DATE

CONSULTANT DRAWING NO. C-103



**THE CITY OF WINNIPEG**  
PUBLIC WORKS DEPARTMENT  
ENGINEERING DIVISION

2019 REGIONAL STREET RENEWAL PROGRAM  
MAIN STREET  
MCADAM AVE TO KILBRIDE AVE  
STAGE 1

SHEET 17 OF 25  
CAD FILE DRAWING NUMBER 07620c-103-920.dwg  
CITY DRAWING NUMBER P-3502-17