

SECTION AT STA 2+470
1:100H 1:50V

- NOTES:**
- WORKS IN CLOSE PROXIMITY TO THE 400mm FEEDERMAIN SHALL BE DONE IN ACCORDANCE WITH E18 OF THE SPECIFICATION. FURTHER TO E18.10.1, VIBRATORY COMPACTION SHALL NOT BE PERMITTED WITHIN 3.0m OF THE CENTERLINE OF THE 400mm FEEDERMAIN.
 - ADJUST ALL WATER VALVES, MANHOLES AND CATCH BASINS TO GRADE.
 - ADJUST ALL WATER SERVICE VALVES TO GRADE, EXISTING SERVICE VALVES ARE NOT SHOWN HERE BUT ARE WITHIN THE SIDEWALK RENEWAL AREA.

WARNING

IF POWER EQUIPMENT OR EXPLOSIVES ARE TO BE USED FOR EXCAVATION ON THIS PROJECT THE CONTRACTOR MUST:
 1) NOTIFY THE GAS COMPANY OF THE PROPOSED LOCATION OF EXCAVATION.
 2) TAKE PRECAUTION TO AVOID DAMAGE TO GAS COMPANY INSTALLATIONS.
 SEE PROVINCIAL REGULATION 140/92 FOR DETAILS

METRIC
WHOLE NUMBERS INDICATE MILLIMETRES
DECIMALIZED NUMBERS INDICATE METRES

VA:1137\active\113707620\0300_drawing\0302_sheet_files\02_civil\07620c-206-920.dwg
2019/01/29 3:05 PM By: Kjarntanson, Melanie

EXISTING	LEGEND-PLAN	PROPOSED	EXISTING	LEGEND-PLAN	PROPOSED	EXISTING	LEGEND-PROFILE	PROPOSED
150 WM	WATERMAIN	150 WM	HYDRO	M.T.S.	150 WM	WATERMAIN	HYDRANT, VALVE	150 WM
300 LBS	LAND DRAINAGE SEWER	300 LBS	CONCRETE	ASPHALT	300 LBS	LAND DRAINAGE SEWER	WASTE WATER SEWER	250 WWS
250 WWS	WASTE WATER SEWER	250 WWS	SIDEWALK	PROPERTY LINE	31.334	SURVEY BAR	GLAS GRID	(31.334)
MANHOLE	CATCH BASIN	CURB INLET	JUNCTIONS	CULVERT	GAS	EXISTING	LEGEND-PLAN	PROPOSED
HYDRO	M.T.S.	CONCRETE	ASPHALT	SIDEWALK	PROPERTY LINE	SURVEY BAR	GLAS GRID	ELEVATION
NORTH OR WEST GUTTER	SOUTH OR EAST GUTTER	NORTH OR WEST P	SOUTH OR EAST P	NORTH OR WEST DITCH	SOUTH OR EAST DITCH			

LOCATION APPROVED UNDERGROUND STRUCTURES
 SUPV. U/G STRUCTURES COMMITTEE DATE
 NOTE:
 LOCATION OF UNDERGROUND STRUCTURES AS SHOWN ARE BASED ON THE BEST INFORMATION AVAILABLE BUT NO GUARANTEE IS GIVEN THAT ALL EXISTING UTILITIES ARE SHOWN OR THAT THE GIVEN LOCATIONS ARE EXACT. CONFIRMATION OF EXISTENCE AND EXACT LOCATION OF ALL SERVICES MUST BE OBTAINED FROM THE INDIVIDUAL UTILITIES BEFORE PROCEEDING WITH CONSTRUCTION.

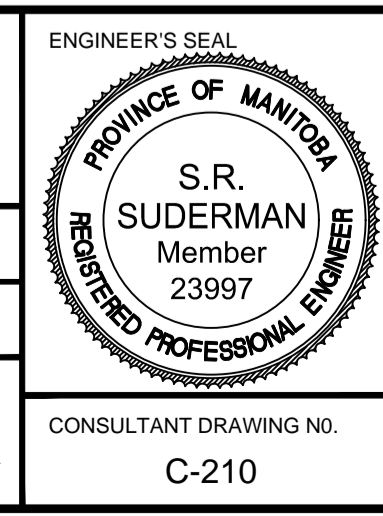
NO.	REVISIONS	DATE	BY
2	ISSUED FOR TENDER	19.01.25	S.R.S.
1	ISSUED FOR U/G STRUCTURES REVIEW	18.12.12	S.R.S.
0	ISSUED FOR 98% REVIEW	18.11.08	S.R.S.

Stantec
500 - 311 Portage Avenue, Winnipeg MB
www.stantec.com

DESIGNED BY: T.G.J.D. CHECKED BY: D.M.
 DRAWN BY: M.K. APPROVED BY: S.R.S.

HOR. SCALE: 1:250
 VERTICAL: 1:10

RELEASED FOR CONSTRUCTION: DATE
 CONSULTANT DRAWING NO. C-210



THE CITY OF WINNIPEG
PUBLIC WORKS DEPARTMENT
ENGINEERING DIVISION

2019 REGIONAL STREET RENEWAL PROGRAM
 MAIN STREET
 STA 2+410 TO STA 2+570
 ROADWORKS

SHEET OF 13 25
 CAD FILE DRAWING NUMBER 07620c-206-920.dwg
 CITY DRAWING NUMBER P-3502-13