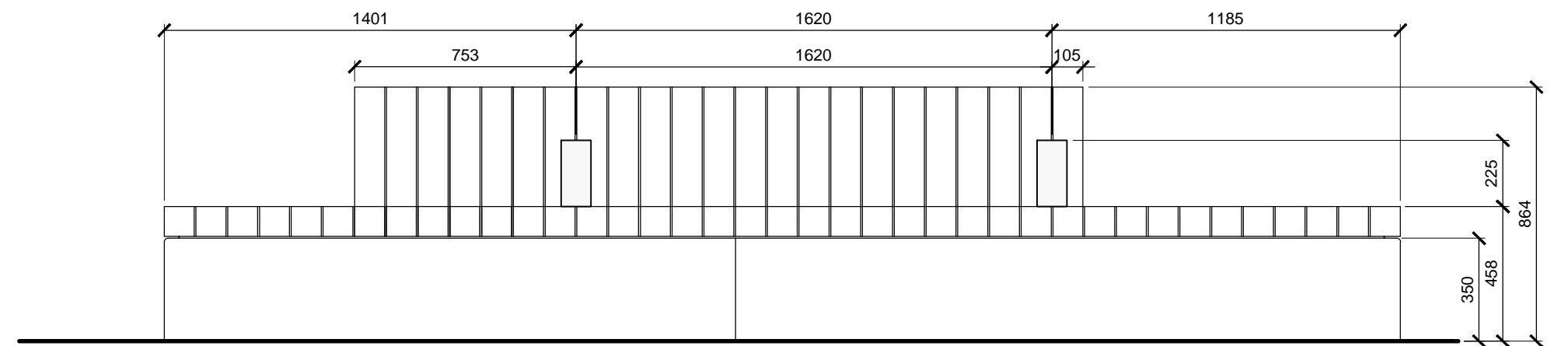

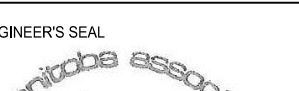



1 LILY & JAMES BENCH  
L3.1 SCALE 1:20



2 WATERFRONT & JAMES BENCH  
L3.1 SCALE 1:20



LOCATIONS APPROVED UNDERGROUND STRUCTURES				G.B.M. ELEV.				 <div>HTFC PLANNING &amp; DESIGN 200-215 Saskatchewan Avenue East Winnipeg, MB R2B 0P5 PH:204.944.9907 FAX:204.944.9907</div>				 <div>ENGINEER'S SEAL Shawn Manning Member No. 81 Feb 28 2018</div>				 <div>THE CITY OF WINNIPEG PUBLIC WORKS DEPARTMENT ENGINEERING SERVICES DIVISION</div>							
SIGNED BY: _____ DATE _____								DESIGNED BY JH				CHECKED BY GM				2018 NORTH EAST EXCHANGE DISTRICT STREET RENEWALS				CITY DRAWING NUMBER			
SUPV U/G STRUCTURES _____								DRAWN BY JH				APPROVED BY GM								SHEET 12 OF 19			
LOCATION OF UNDERGROUND STRUCTURES AS SHOWN ARE BASED ON THE BEST INFORMATION AVAILABLE BUT NO GUARANTEE IS GIVEN THAT ALL EXISTING UTILITIES ARE SHOWN OR THAT THE GIVEN LOCATIONS ARE EXACT CONFIRMATION OF EXISTANCE AND EXACT LOCATION OF ALL SERVICES MUST BE OBTAINED FROM THE INDIVIDUAL UTILITIES BEFORE PROCEEDING								HOR. SCALE AS NOTED				RELEASED FOR CONSTRUCTION				BENCH DETAILS				BID NO. 61-2018			
								VERTICAL AS NOTED															
								DATE 28/02/18				DATE											
NO. REVISIONS				DATE BY																			