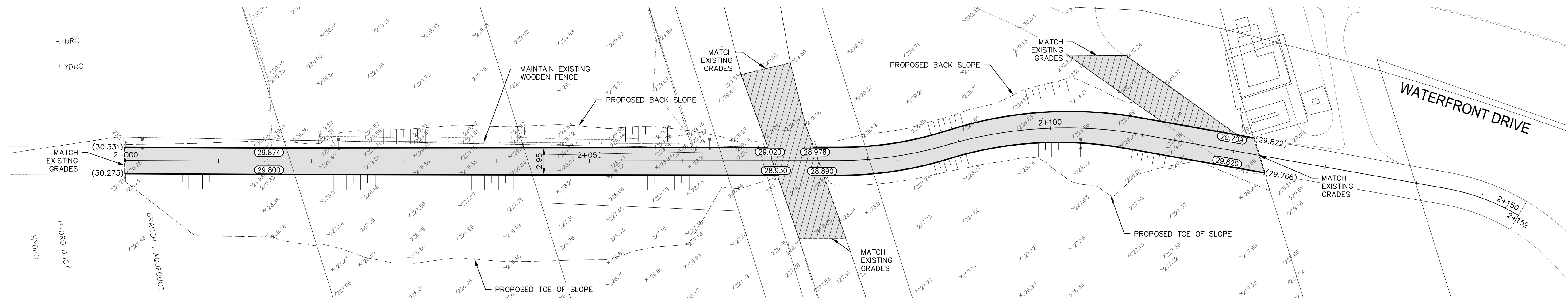
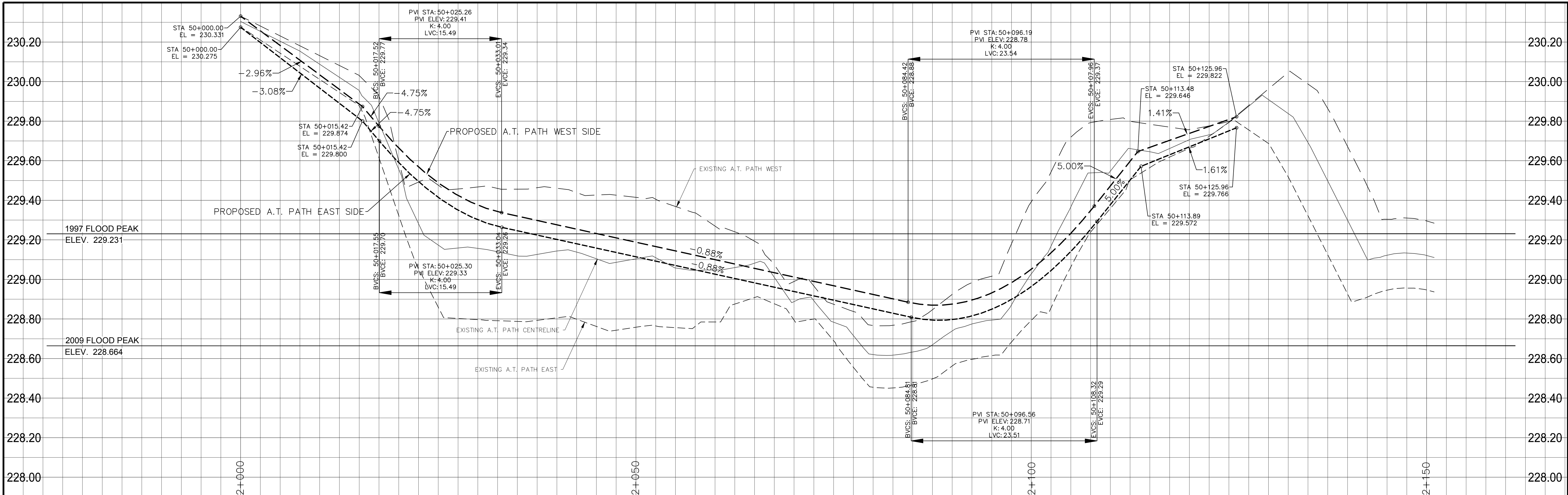
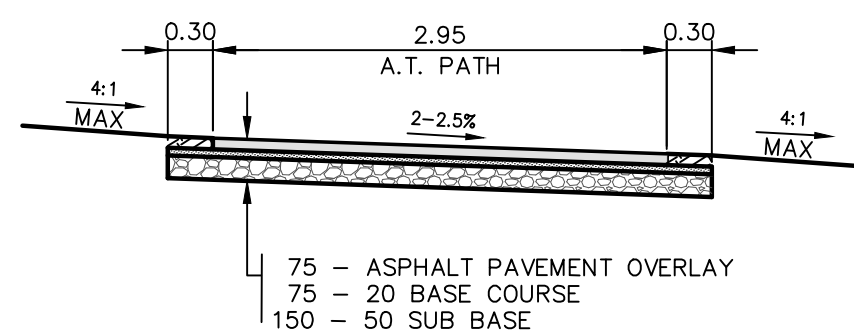


WSP 01-2018-11-08m
P:\2017\17-01-01-2018 North East Exchange\WSP Dwg\17M-0171-00 C01-C07 James St. Waterfront Dr. Plan and Profile-2018.02.28.dwg -tab:C-05 A.T. Path



NOTE:
These design documents are prepared solely for the use by the party with whom the design professional has entered into a contract and there are no representations of any kind made by the design professional to any party with whom the design professional has not entered into a contract.

---	WATER MAIN	---	HYDRO POLE & LIGHT STANDARD	---	
---	LAND DRAINAGE SEWER	---	LIGHT STANDARD OR TRAFFIC SIGNAL	---	
---	WASTE WATER SEWER	---	HYDRO POLE	---	
---	HYDRO	---		---	
---	M.T.S.	---	CURB RAMP	---	
---	GAS	---	DETECTABLE WARNING SURFACE TILE	---	
---	SIGNALS	---	EDGE OF SIDEWALK	---	
○	MANHOLE	●	FENCE	---	
□	CATCH BASIN	■	PROPERTY LINE	---	
△	CURB INLET	▼	EDGE OF ASPHALT	---	
---	UTILITIES ADJUSTED	△ □ ○	EDGE OF CONCRETE	---	
└	PLUG	└	MODIFIED BARRIER CURB	---	
◇	HYDRANT	◆	BARRIER CURB	---	
⊗	VALVE	⊗	CURB AND GUTTER REPAIR	---	
⊕	CURB STOP	⊕	MODIFIED BARRIER CURB AND GUTTER	---	
---	GROUND GRADE	---	CONC. SIDEWALK WITH BLOCKOUTS	---	
(31.00)	PAVEMENT GRADE	(31.00)	CONCRETE REPAIR	---	
---	ANCHOR	---	ASPHALT OVERLAY	---	
#111	CIVIC ADDRESS	---	PAVING STONE	---	
⊕	IRON BAR	---	ASPHALT MILLING	---	
---	EXISTING	---	LEGEND-PLAN	---	
---	PROPOSED	---	LEGEND-PROFILE	---	
---	EXISTING	---	LEGEND-PROFILE	---	



TYPICAL CROSS-SECTION
NTS

LOCATIONS APPROVED
UNDERGROUND STRUCTURES

SIGNED BY: _____ DATE: _____
SUPV U/G STRUCTURES

LOCATION OF UNDERGROUND STRUCTURES AS SHOWN ARE BASED ON THE BEST INFORMATION AVAILABLE BUT NO GUARANTEE IS GIVEN THAT ALL EXISTING UTILITIES ARE SHOWN OR THAT THE GIVEN LOCATIONS ARE EXACT CONFIRMATION OF EXISTENCE AND EXACT LOCATION OF ALL SERVICES MUST BE OBTAINED FROM THE INDIVIDUAL UTILITIES BEFORE PROCEEDING

G.B.M. TOP OF TOP NUT ON HYDRANT SOUTHWEST CORNER OF JAMES AVENUE AND BERTHA STREET
ELEV. 232.033

H
G
F
E
D
C
B
A
NO. REVISIONS

DATE BY

wsp

DESIGNED BY MV

DRAWN BY SB

HOR. SCALE 1:250

VERTICAL 1:10

DATE 28-FEB-2018

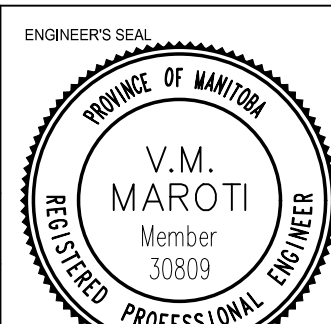
WSP Canada Group Limited
Suite 111 - 93 Lombard Ave
Winnipeg, MB R3B 3B1
T. 204.943.3178
F. 204.943.4948
www.wsp.com

CHECKED BY VM

APPROVED BY VM

RELEASED FOR CONSTRUCTION

DATE



CONSULTANT ACAD DWS NO. C-05



THE CITY OF WINNIPEG
PUBLIC WORKS DEPARTMENT
ENGINEERING DIVISION

NORTH EAST EXCHANGE DISTRICT

STREET RENEWALS

NORTH WINNIPEG PATHWAY

PACIFIC AVENUE TO GALT AVENUE

A.T. PATH EXTENSION

PRELIMINARY

METRIC

WHOLE NUMBERS INDICATE MILLIMETRES
DECIMALIZED NUMBERS INDICATE METRES



Certificate of Authorization
WSP Canada Group Limited

No. 6657

CITY DRAWING NUMBER

SHEET 5 OF 19

BID NO. 61-2018