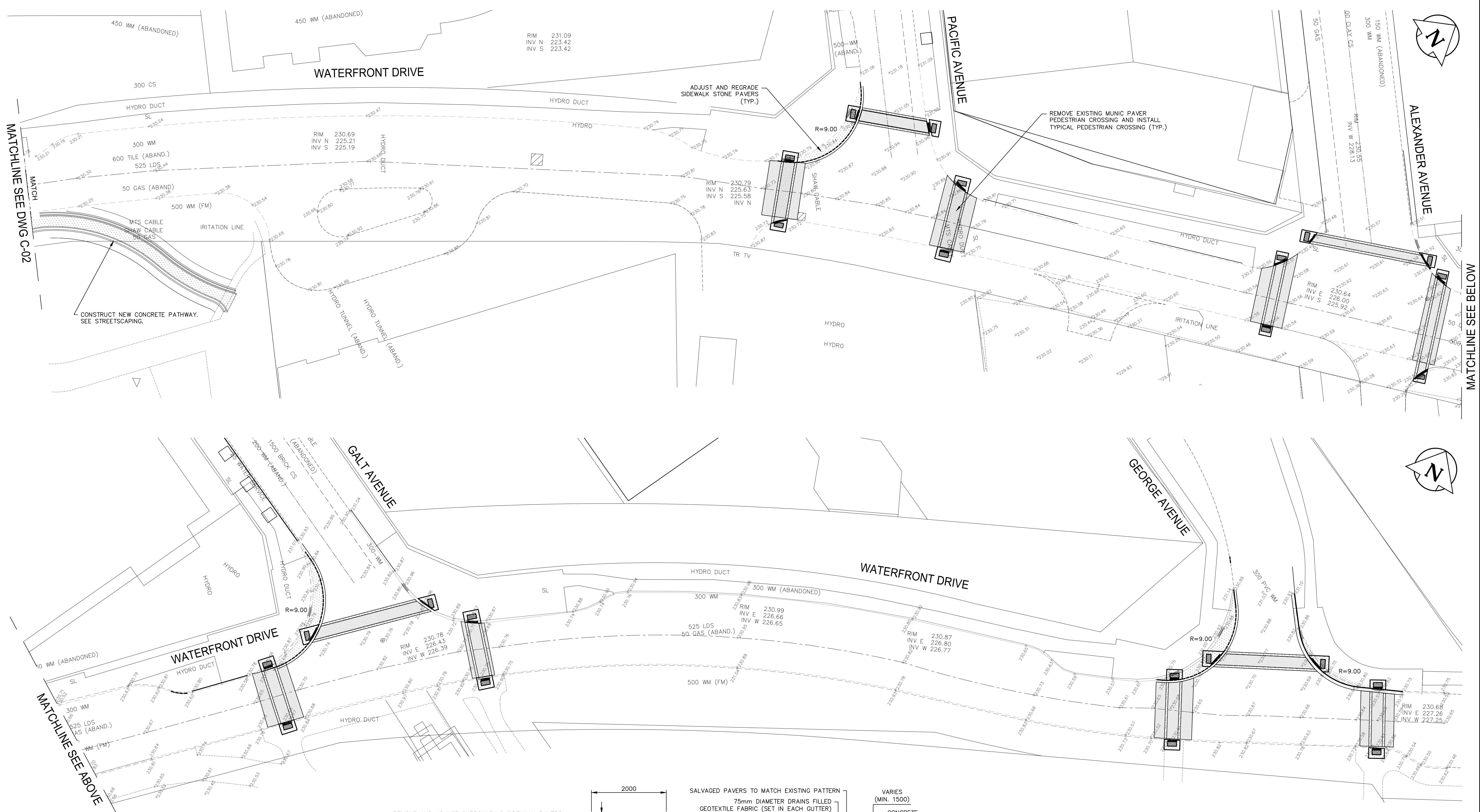
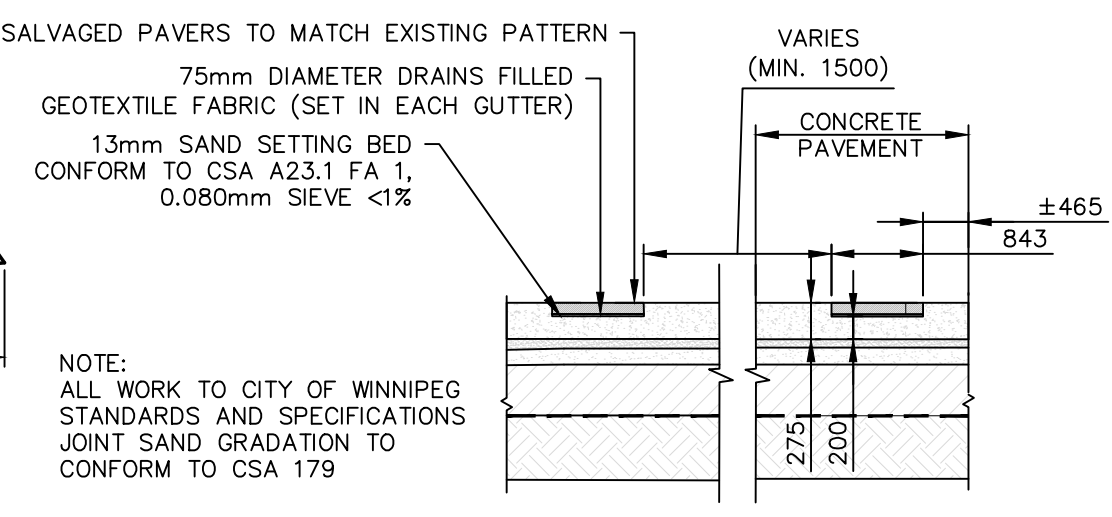
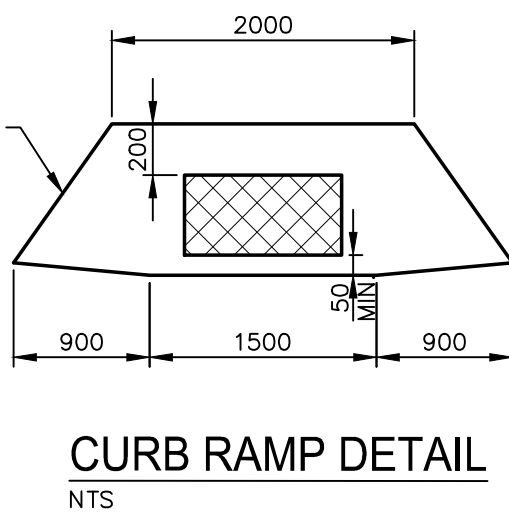


Mar 01, 2018 - 11:07am
P:\2017\17M-01771-00 - 2018 North East Exchange WSP Dwg\17M-01771-00 C01-C07 James St, Waterfront Dr Plan and Profile-2018.02.28.dwg -tab:C-04 Waterfront Drive



NOTE:
These design documents are prepared solely for the use by the party with whom the design professional has entered into a contract and there are no representations of any kind made by the design professional to any party with whom the design professional has not entered into a contract.

WATER MAIN	HYDRO POLE & LIGHT STANDARD						
LAND DRAINAGE SEWER	LIGHT STANDARD OR TRAFFIC SIGNAL						
WASTE WATER SEWER	HYDRO POLE						
HYDRO							
M.T.S.	CURB RAMP						
GAS	DETECTABLE WARNING SURFACE TILE						
SIGNALS	EDGE OF SIDEWALK						
MANHOLE	FENCE						
CATCH BASIN	PROPERTY LINE						
CURB INLET	EDGE OF ASPHALT						
UTILITIES ADJUSTED	EDGE OF CONCRETE						
PLUG	MODIFIED BARRIER CURB						
HYDRANT	BARRIER CURB						
VALVE	CURB AND GUTTER REPAIR						
CURB STOP	MODIFIED BARRIER CURB AND GUTTER						
GROUND GRADE	CONC. SIDEWALK WITH BLOCKOUTS						
(31.00) PAVEMENT GRADE	CONCRETE REPAIR						
ANCHOR	ASPHALT OVERLAY						
#111 CIVIC ADDRESS	PAVING STONE						
IRON BAR	ASPHALT MILLING						
EXISTING	LEGEND-PLAN	PROPOSED	EXISTING	LEGEND-PLAN	PROPOSED	EXISTING	LEGEND-PROFILE



LOCATIONS APPROVED
UNDERGROUND STRUCTURES

SIGNED BY: _____ DATE: _____

SUPPLY U/G STRUCTURES

LOCATION OF UNDERGROUND STRUCTURES AS SHOWN ARE BASED ON THE BEST INFORMATION AVAILABLE BUT NO GUARANTEE IS GIVEN THAT ALL EXISTING UTILITIES ARE SHOWN OR THAT THE GIVEN LOCATIONS ARE EXACT CONFIRMATION OF EXISTENCE AND EXACT LOCATION OF ALL SERVICES MUST BE OBTAINED FROM THE INDIVIDUAL UTILITIES BEFORE PROCEEDING

G.B.M. TOP OF TOP NUT ON HYDRANT SOUTHWEST CORNER OF JAMES AVENUE AND BERTHA STREET ELEV. 232.033							
H							
G							
F							
E							
D							
C	ISSUED FOR TENDER	28-FEB-18	MV				
B	ISSUED FOR U/G SERVICES REVIEW	08-JAN-18	MV				
A	ISSUED FOR CLIENT REVIEW	10-NOV-17	MV				
NO.	REVISIONS	DATE	BY				

WSP Canada Group Limited
Suite 111 - 93 Lombard Ave
Winnipeg, MB R3B 3B1
t. 204.943.3178
f. 204.943.4848
www.wsp.com

DESIGNED BY: MV
CHECKED BY: VM
DRAWN BY: SB
APPROVED BY: VM
HORIZ. SCALE: 1:250
VERTICAL: 1:10
RELEASED FOR CONSTRUCTION
DATE: 28-FEB-2018

THE CITY OF WINNIPEG
PUBLIC WORKS DEPARTMENT
ENGINEERING DIVISION

NORTH EAST EXCHANGE DISTRICT
STREET RENEWALS
WATERFRONT DRIVE
JAMES AVENUE TO GEORGE AVENUE

CITY DRAWING NUMBER
SHEET 4 OF 19
BID NO. 61-2018

Winnipeg

PROVINCE OF MANITOBA
V.M. MAROTI
Member
30809
REGISTERED PROFESSIONAL ENGINEER

CONSULTANT ACAD DWG. NO. C-04

PRELIMINARY
METRIC

WHOLE NUMBERS INDICATE MILLIMETRES
DECIMALIZED NUMBERS INDICATE METRES

ENGINEERS
GEO SCIENTIST
MANITOBA
Certificate of Authorization
WSP Canada Group Limited
No. 6657