

NOTE:
These design documents are prepared solely for the use by the party with whom the design professional has entered into a contract and there are no representations of any kind made by the design professional to any party with whom the design professional has not entered into a contract.

---	WATER MAIN	---	HYDRO POLE & LIGHT STANDARD	---			
---	LAND DRAINAGE SEWER	---	LIGHT STANDARD OR TRAFFIC SIGNAL	---			
---	WASTE WATER SEWER	---	HYDRO POLE	---			
---	HYDRO	---		---			
---	M.T.S.	---	CURB RAMP	---			
---	GAS	---	DETECTABLE WARNING SURFACE TILE	---			
---	SIGNALS	---	EDGE OF SIDEWALK	---			
○	MANHOLE	●	FENCE	---			
□	CATCH BASIN	■	PROPERTY LINE	---			
△	CURB INLET	▼	EDGE OF ASPHALT	---			
---	UTILITIES ADJUSTED	△ □ ○	EDGE OF CONCRETE	---			
┘	PLUG	┘	MODIFIED BARRIER CURB	---			
◇	HYDRANT	◆	BARRIER CURB	---			
⊗	VALVE	⊗	CURB AND GUTTER REPAIR	---			
⊙	CURB STOP	⊙	MODIFIED BARRIER CURB AND GUTTER	---			
230.99	GROUND GRADE		CONC. SIDEWALK WITH BLOCKOUTS	---			
(31.00)	PAVEMENT GRADE	(31.00)	CONCRETE REPAIR	---			
→	ANCHOR		ASPHALT OVERLAY	---			
#111	CIVIC ADDRESS		PAVING STONE	---			
⊕	IRON BAR		ASPHALT MILLING	---			
EXISTING	LEGEND-PLAN	PROPOSED	LEGEND-PLAN	PROPOSED	EXISTING	LEGEND-PROFILE	PROPOSED

LOCATIONS APPROVED UNDERGROUND STRUCTURES

SIGNED BY: _____
DATE: _____

LOCATION OF UNDERGROUND STRUCTURES AS SHOWN ARE BASED ON THE BEST INFORMATION AVAILABLE BUT NO GUARANTEE IS GIVEN THAT ALL EXISTING UTILITIES ARE SHOWN OR THAT THE GIVEN LOCATIONS ARE EXACT CONFIRMATION OF EXISTENCE AND EXACT LOCATION OF ALL SERVICES MUST BE OBTAINED FROM THE INDIVIDUAL UTILITIES BEFORE PROCEEDING

G.B.M. TOP OF TOP NUT ON HYDRANT SOUTHWEST CORNER OF JAMES AVENUE AND BERTHA STREET
ELEV. 232.033

H			
G			
F			
E			
D			
C	ISSUED FOR TENDER	28-FEB-18	MV
B	ISSUED FOR UG SERVICES REVIEW	08-JAN-18	MV
A	ISSUED FOR CLIENT REVIEW	10-NOV-17	MV
NO.	REVISIONS	DATE	BY

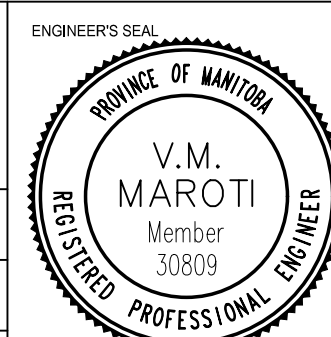
DESIGNED BY: MV
CHECKED BY: VM
DRAWN BY: SB
APPROVED BY: VM

HOR. SCALE: 1:250
VERTICAL: 1:10
DATE: 28-FEB-2018

NOTES:

1. ALL WORK AND MATERIALS TO BE IN ACCORDANCE WITH THE LATEST REVISION OF THE CITY OF WINNIPEG STANDARD CONSTRUCTION SPECIFICATIONS.
2. CONTRACTOR TO CONFIRM THE LOCATION OF ALL UTILITIES/SERVICES IN THE FIELD PRIOR TO CONSTRUCTION.
3. ALL ROADWAY DIMENSIONS SHOWN ARE TO BACK OF CURB.
4. ADD 200.00 TO ABBREVIATED ELEVATIONS TO OBTAIN GEODETIC ELEVATION.
5. RENEW CURB AND SIDEWALK AS IDENTIFIED BY CONTRACT ADMINISTRATOR.
6. MODIFIED BARRIER CURB TO BE CONSTRUCTED AT ALL INTERSECTION RADII AND BACK LANE RADII.
7. INSTALL 40mm LIP CURB THROUGH ALL RESIDENTIAL APPROACHES.
8. ALL EXISTING LONG WATER SERVICES TO BE INSULATED AS PER SD-018 (AS REQUIRED).
9. LAMP STANDARDS, HYDRO POLES, AND ANCHORS THAT REQUIRE TEMPORARY SUPPORT, REMOVAL OR REPLACEMENT, TO BE DONE SO AT THE EXPENSE OF THE CONTRACTOR AS NECESSARY.
10. CONTRACTORS TO TAKE PRECAUTIONARY STEPS TO PROTECT EXISTING TREES WITHIN THE LIMITS OF CONSTRUCTION FROM DAMAGE FROM CONSTRUCTION ACTIVITIES AS OUTLINED IN THE SPECIFICATIONS.
11. ADJUST ALL WATER VALVES, HYDRANTS, MANHOLES, AND CATCH BASINS IN WORK AREA TO GRADE.

WSP Canada Group Limited
Suite 111 - 93 Lombard Ave
Winnipeg, MB R3B 3B1
T: 204.943.3178
F: 204.943.4948
www.wsp.com



CONSULTANT ACAD DWG. NO.
C-02



THE CITY OF WINNIPEG
PUBLIC WORKS DEPARTMENT
ENGINEERING DIVISION

NORTH EAST EXCHANGE DISTRICT
STREET RENEWALS
JAMES AVENUE
LILY STREET TO WATERFRONT DRIVE
STA. 1+150 TO STA. 1+215.63

CITY DRAWING NUMBER
SHEET 2 OF 19

BID NO.
61-2018

PRELIMINARY

METRIC

WHOLE NUMBERS INDICATE MILLIMETRES
DECIMALIZED NUMBERS INDICATE METRES

ENGINEERS
GEOSCIENTIST
MANITOBA

Certificate of Authorization
WSP Canada Group Limited

No. 6657