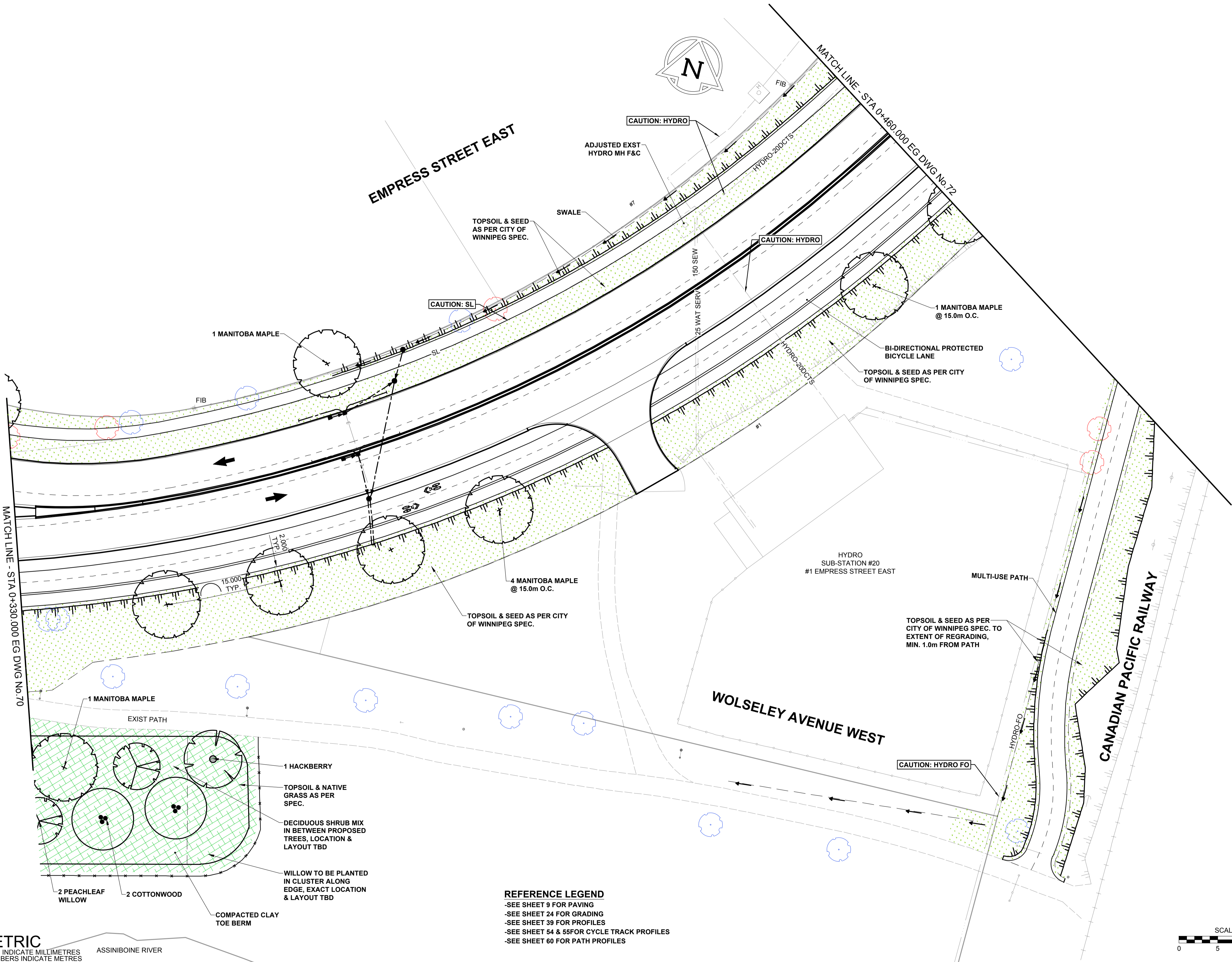


ISO A1 - 594mm x 841mm
 S:\a1\from-service\2018\Projects\16-0245-004_Empress Overpass\7_CAD\WORKING\602-2018_Drawing_P-3494-71-RB.dwg
 Last Saved: 8/28/2018 10:04 AM by wkf
 Plotted: 8/29/2018 12:12 PM by Windy Fox



- LANDSCAPE LEGEND**
- TOPSOIL & SEEDING TO MEET CITY OF WINNIPEG SPEC CW 3520 & CW 3540
 - NATIVE GRASSES 2 YEAR ACCEPTANCE PERIOD, FOLLOWED BY A 1 YEAR MAINTENANCE AND WARRANTY
 - EXISTING TREES TO REMAIN
 - EXISTING TREES TO BE TRIMMED
 - EXISTING TREES TO BE REMOVED

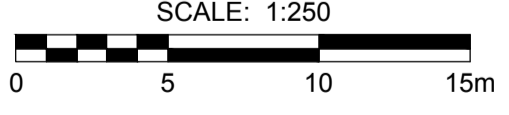
- NOTES**
1. ALL CONSTRUCTION MATERIALS AND METHODS TO BE IN ACCORDANCE WITH "THE CITY OF WINNIPEG, STANDARD CONSTRUCTION SPECIFICATION AND STANDARD DETAILS" (LATEST REVISION).
 2. CONTRACTOR TO TAKE PRECAUTIONARY STEPS AS OUTLINED IN THE SPECIFICATIONS TO PROTECT EXISTING TREES WITHIN THE LIMITS OF CONSTRUCTION FROM DAMAGE FROM CONSTRUCTION ACTIVITIES.
 3. CONTRACTOR TO CONFIRM THE LOCATION OF ALL UTILITIES/SERVICES IN THE FIELD PRIOR TO CONSTRUCTION.
 4. CONTRACTOR MUST FOLLOW THE REQUIREMENTS OF THE VARIOUS UTILITIES.
 5. FINAL LOCATION OF REST STOPS TO BE CONFIRMED ON SITE PRIOR TO CONSTRUCTION.
 6. CONTRACTOR SHALL INSTALL TOPSOIL AND SEEDING / NATIVE GRASS TO ALL AREAS WHERE MATERIAL IS REMOVED AND NOT RE-ESTABLISHED. FINAL EXTENT & SEEDING TYPE TO BE CONFIRMED ON SITE PRIOR TO CONSTRUCTION.
 7. TOPSOIL AND SEEDING / NATIVE GRASS SHALL BE PLANTED AT A DISTANCE AS INDICATED BELOW, UNLESS NOTED OTHERWISE ON PLAN:
 - a. TYPICAL 1.0m OFFSET FROM SIDEWALK / PATHWAY
 - b. TYPICAL 0.6m OFFSET FROM SILT FENCING
 8. CONTRACTOR TO STAKE PROPOSED TREE LOCATION ON SITE, LAYOUT TO BE APPROVED BY LANDSCAPE ARCHITECT PRIOR TO INSTALLATION.
 9. SEE SHEET 84 FOR PROPOSED TREE PLANTING DETAILS
 10. BOULEVARD TREES SHALL BE PLANTED AT A MINIMUM DISTANCE FROM ABOVE GROUND STRUCTURES AS INDICATED BELOW:
 - a. MINIMUM DISTANCE FROM STREET INTERSECTIONS: 6m
 - b. MINIMUM DISTANCE FROM LIGHT STANDARDS: 3m
 - c. MINIMUM DISTANCE FROM PRIVATE APPROACHES: 1.5m
 - d. MINIMUM DISTANCE FROM HYDRANTS: 3m
 - e. MINIMUM DISTANCE FROM HYDRO POLES: 3m
 - f. MINIMUM DISTANCE FROM MANHOLES/CB'S/SEWER GRATES: 3m
 11. ALSO REFER TO WRITTEN SPECIFICATION.

REFERENCE LEGEND

- SEE SHEET 9 FOR PAVING
- SEE SHEET 24 FOR GRADING
- SEE SHEET 39 FOR PROFILES
- SEE SHEET 54 & 55 FOR CYCLE TRACK PROFILES
- SEE SHEET 60 FOR PATH PROFILES

PLANT LIST
 (REFER TO SHEET 84 FOR FULL PLANT SCHEDULE & DETAILS)

COMMON NAME
DECIDUOUS TREES
BARON MANITOBA MAPLE
DELTA HACKBERRY
COTTONWOOD (MALE)
PEACHLEAF WILLOW



METRIC
 WHOLE NUMBERS INDICATE MILLIMETRES
 DECIMALIZED NUMBERS INDICATE METRES

EXISTING	NEW	EXISTING	LEGEND - PLAN	NEW	EXISTING	LEGEND - PLAN	NEW

LOCATION APPROVED
 UNDERGROUND STRUCTURES

DATE: _____

NOTE:
 LOCATION OF UNDERGROUND STRUCTURES AS SHOWN ARE BASED ON THE BEST INFORMATION AVAILABLE BUT NO GUARANTEE IS GIVEN THAT ALL EXISTING UTILITIES ARE SHOWN OR THAT THE GIVEN LOCATIONS ARE EXACT. CONFIRMATION OF EXISTENCE AND EXACT LOCATION OF ALL SERVICES MUST BE OBTAINED FROM THE INDIVIDUAL UTILITIES BEFORE PROCEEDING WITH CONSTRUCTION.

NO.	REVISIONS	DATE	BY	CO
B	ISSUED FOR TENDER	18/09/04	CO	
A	ISSUED FOR CLIENT REVIEW	18/06/27	CO	

SCATLIFF + MILLER + MURRAY
 visionary urban design + landscapes

DESIGNED BY: CD	CHECKED BY: DM
DRAWN BY: WF	APPROVED BY: CO
RELEASED FOR CONSTRUCTION: N/A	
DATE: 18/06/27	

PROFESSIONAL'S SEAL

CHERYL DIXON
 Member No. 117

CONSULTANT FILE NAME
 602-2018_Drawing_P-3494-71-RB.dwg

THE CITY OF WINNIPEG
 PUBLIC WORKS DEPARTMENT
 ENGINEERING DIVISION

EMPIRE STREET PROJECT
 PAVEMENT RECONSTRUCTION
 LANDSCAPING
 EMPRESS STREET EAST
 STA 0+330.000 EG TO STA 0+460.000 EG

CITY DRAWING NUMBER: P-3494-71
 SHEET 71 OF 168
 DRAWING NO. REV 71 B

SCALE: 1:250
 VERT SCALE: N/A
 DATE: 18/06/27

BID OPPORTUNITY No. 602-2018