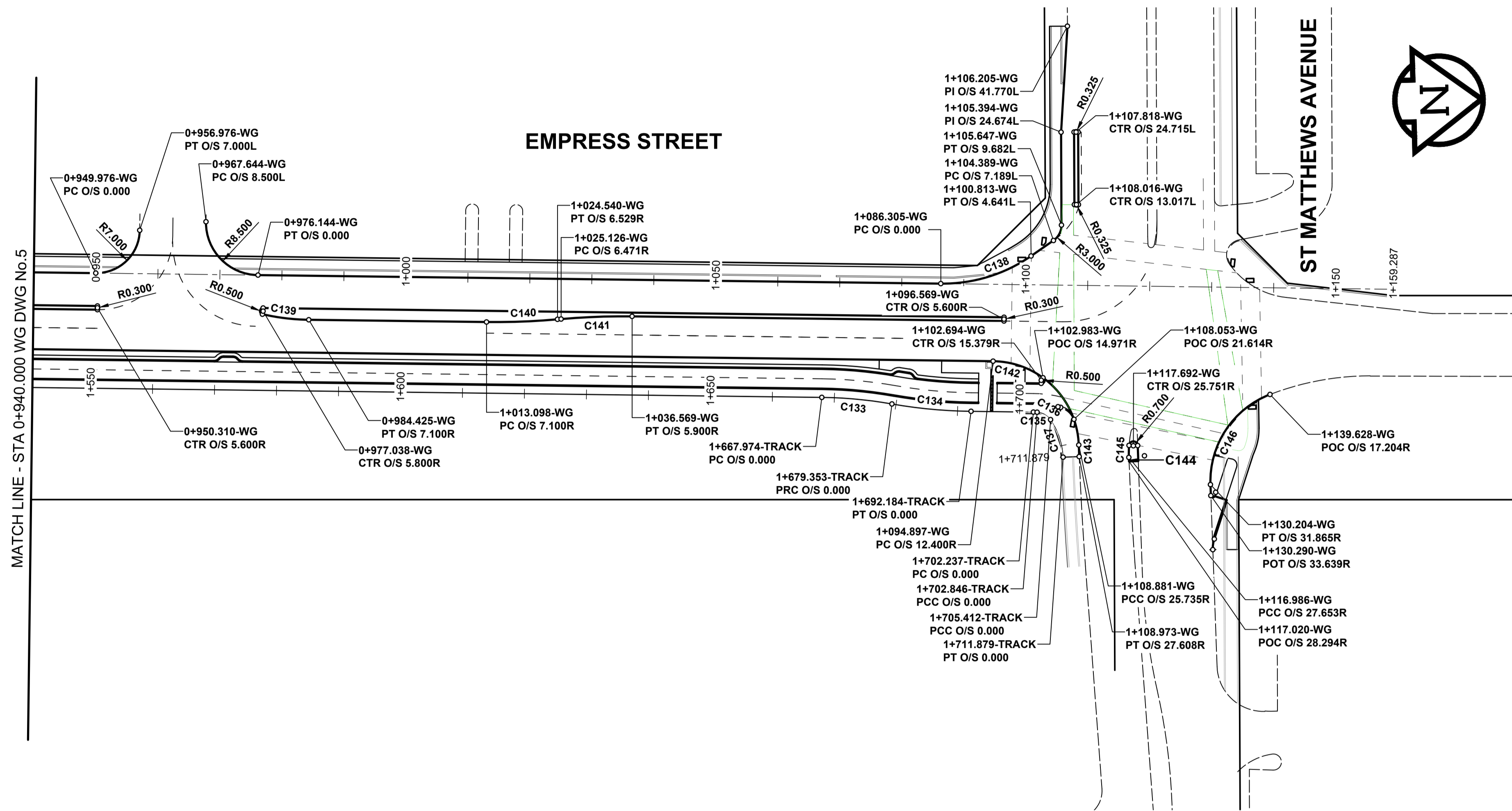


ISO A1 - 564mm x 841mm  
 O:\Winnipeg\Proj\160034\4 Design\1 Drawings\06 Sheets\Detailed Design\Contract 2-Reconstruction\160034-6-Empress-Recon-HG-6.dwg  
 Last Saved: 8/16/2018 9:19 AM by DDaszpod  
 Plotted: 8/29/2018 2:47 PM by Daniel Daszpod

WEST GUTTER LINE CONTROL POINT COORDINATES		
POINT/STATION	NORTHING	EASTING
POT 1+159.287	10092.274	10670.198

CIRCULAR CURVE DATA				
CURVE	RADIUS	LENGTH	DELTA	TANGENT
C138	25.000	15.479	35°28'30"	7.997
C139	35.000	7.552	12°21'46"	3.791
C140	115.000	11.462	5°42'38"	5.736
C141	115.000	11.462	5°42'38"	5.736
C142	14.000	21.325	87°16'32"	13.350
C143	500.000	1.875	0°12'54"	0.938
C144	492.000	0.642	0°04'29"	0.321
C145	17.500	1.944	6°21'51"	0.973
C146	15.000	18.598	71°02'19"	10.707



CYCLE TRACK RIGHT EDGE ALIGNMENT CONTROL POINT COORDINATES		
POINT/STATION	NORTHING	EASTING
PC 1+667.974	9999.646	10685.061
PRC 1+679.353	10010.929	10686.433
PT 1+692.184	10023.653	10687.980
PC 1+702.237	10033.697	10688.384
PCC 1+702.846	10688.420	10688.420
PCC 1+705.412	10036.437	10689.681
PT 1+711.879	10038.290	10695.787

CIRCULAR CURVE DATA				
CURVE	RADIUS	LENGTH	DELTA	TANGENT
C133	70.500	11.379	9°14'51"	5.702
C134	79.500	12.831	9°14'51"	6.430
C135	16.900	0.610	2°04'01"	0.305
C136	2.800	2.565	52°29'28"	1.381
C137	11.400	6.467	32°30'09"	3.323

**METRIC**  
 WHOLE NUMBERS INDICATE MILLIMETRES  
 DECIMALIZED NUMBERS INDICATE METRES



BID OPPORTUNITY No. 602-2018

EXISTING	LEGEND - PLAN	NEW	EXISTING	LEGEND - PLAN	NEW	EXISTING	LEGEND - PLAN	NEW
---	GAS	---	○	MANHOLE	●	---	CONCRETE PAVEMENT	---
---	MTS / PEDESTAL	---	□	CATCH BASIN / CATCH PIT	■	---	CONC SIDEWALK / MEDIAN	---
---	HYDRO / CABINET	---	△	CURB INLET WITH BOX	▲	---	ASPHALT PAVEMENT	---
---	CATV / FIBRE OPTIC	---	○	TREE	▲	---	PAVING STONE	---
---	TRAFFIC SIGNALS / PIT	---	⊕	TEST HOLE	⊕	---	GRAVEL	---
---	LAND DRAINAGE SEWER	---	TH-12	PROPERTY LINE	---	---	RAMP CURB	---
---	SANITARY/COMBINED SEWER	---	⊕	SURVEY BAR	---	---	PLANING / REMOVAL	---
---	CB LEAD / SSP / DCP	---	---	FENCE	---	---		---
---	WATER MAIN	---	---	BOC / EDGE OF PAVEMENT	---	---		---
---	SUBDRAIN	---	33.000	ELEVATION	(33.333)	---		---
---	DITCH	---	---	TRAFFIC SIGN	---	---		---

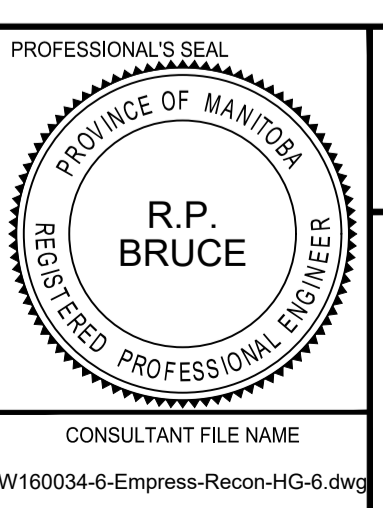
**LOCATION APPROVED**  
 UNDERGROUND STRUCTURES

DATE: \_\_\_\_\_

**NOTE:**  
 LOCATION OF UNDERGROUND STRUCTURES AS SHOWN ARE BASED ON THE BEST INFORMATION AVAILABLE BUT NO GUARANTEE IS GIVEN THAT ALL EXISTING UTILITIES ARE SHOWN OR THAT THE GIVEN LOCATIONS ARE EXACT. CONFIRMATION OF EXISTENCE AND EXACT LOCATION OF ALL SERVICES MUST BE OBTAINED FROM THE INDIVIDUAL UTILITIES BEFORE PROCEEDING WITH CONSTRUCTION.

No.	REVISIONS	DATE	BY
B	ISSUED FOR TENDER	18/09/04	RPB
A	ISSUED FOR CLIENT REVIEW	18/06/27	RPB

<b>MORRISON HERSHFIELD</b>	
DESIGNED BY: WRJ	CHECKED BY: RPB
DRAWN BY: DID	APPROVED BY: BWB
RELEASED FOR CONSTRUCTION	
DATE: 18/09/04	



**THE CITY OF WINNIPEG**  
 PUBLIC WORKS DEPARTMENT  
 ENGINEERING DIVISION

**EMPRESS STREET PROJECT**  
 PAVEMENT RECONSTRUCTION  
 HORIZONTAL GEOMETRY  
 EMPRESS STREET EAST  
 STA 0+940.000 WG TO ST MATTHEWS AVENUE

CITY DRAWING NUMBER: P-3494-6  
 SHEET 6 OF 168  
 DRAWING No. 6 REV B