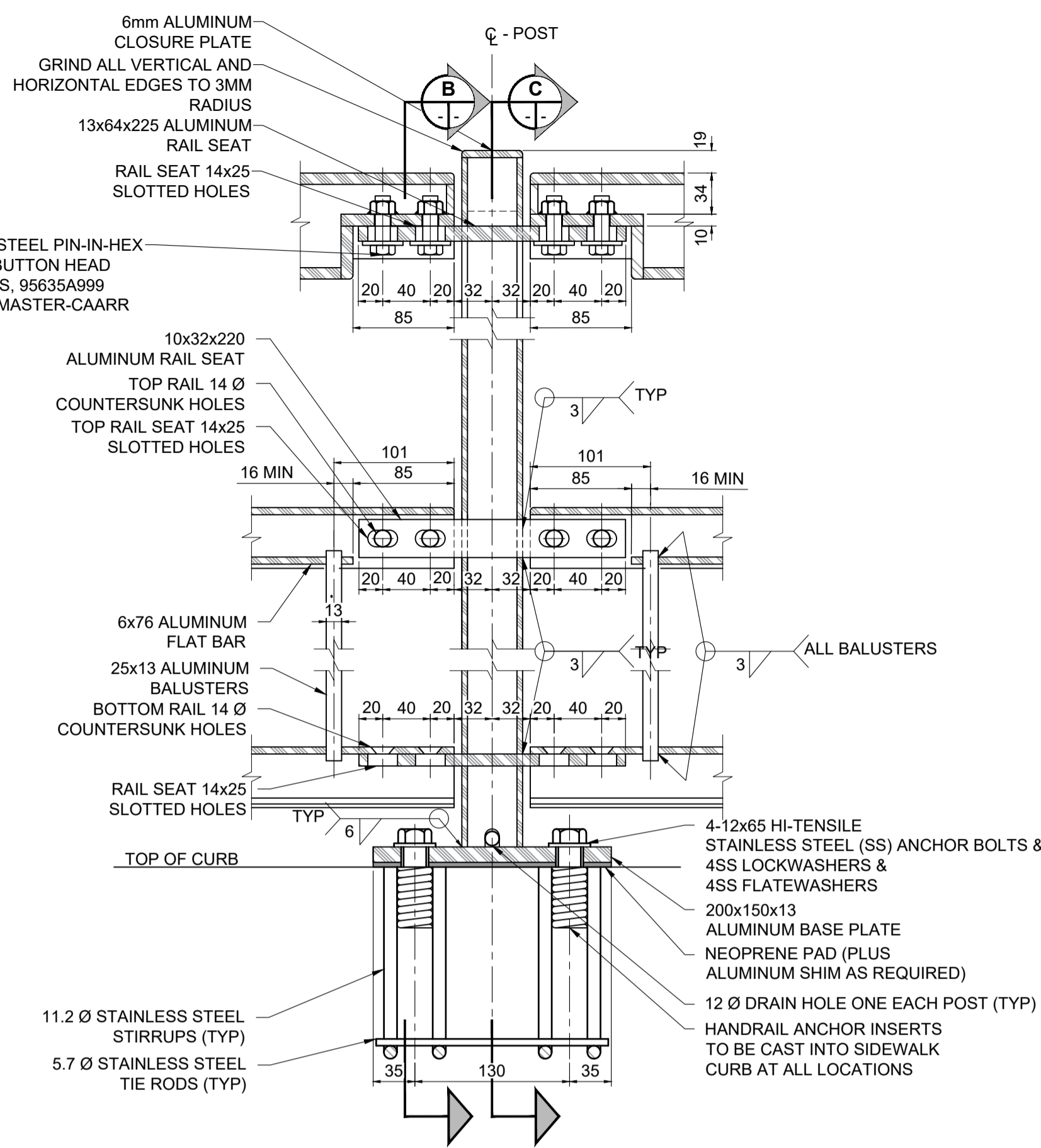
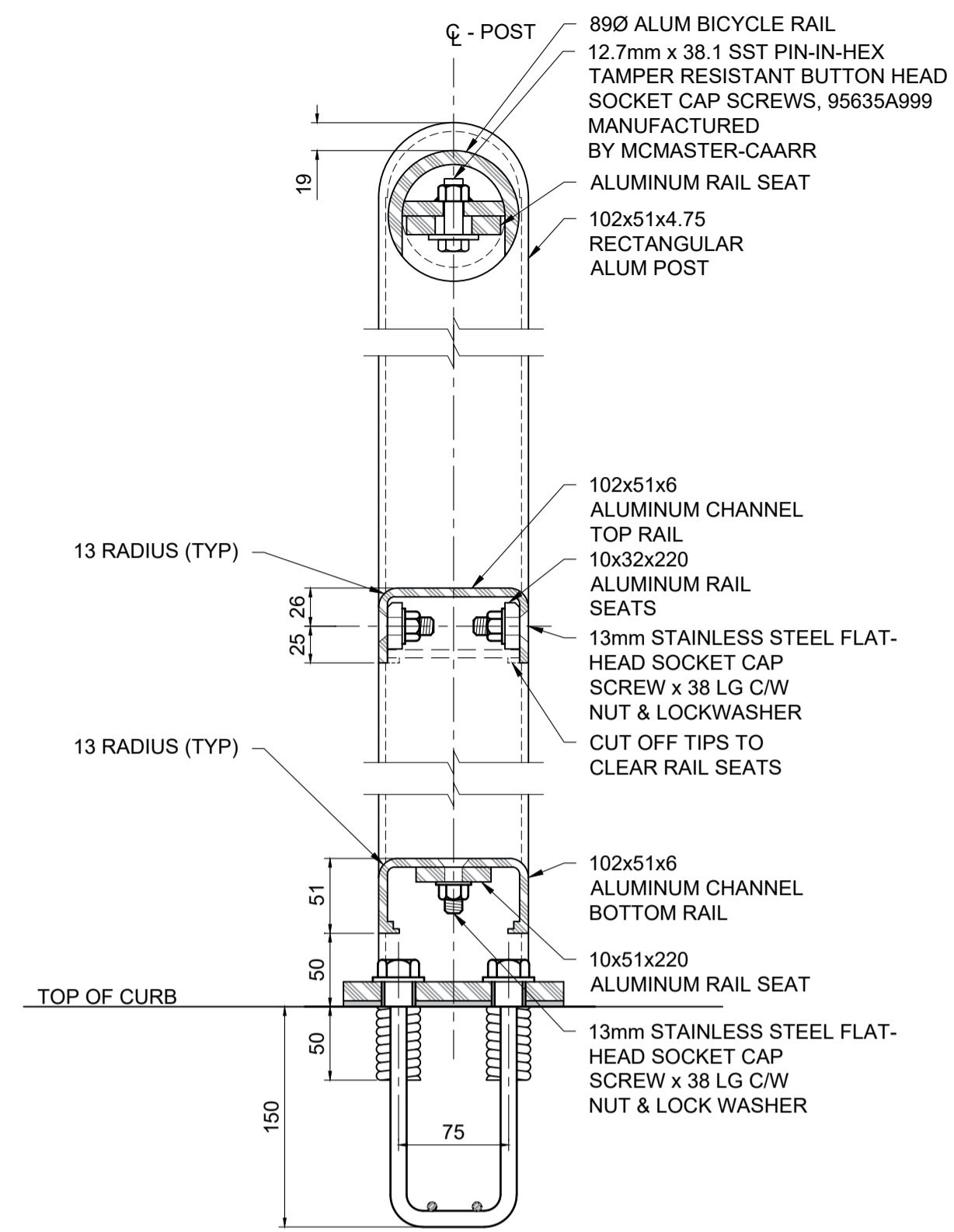


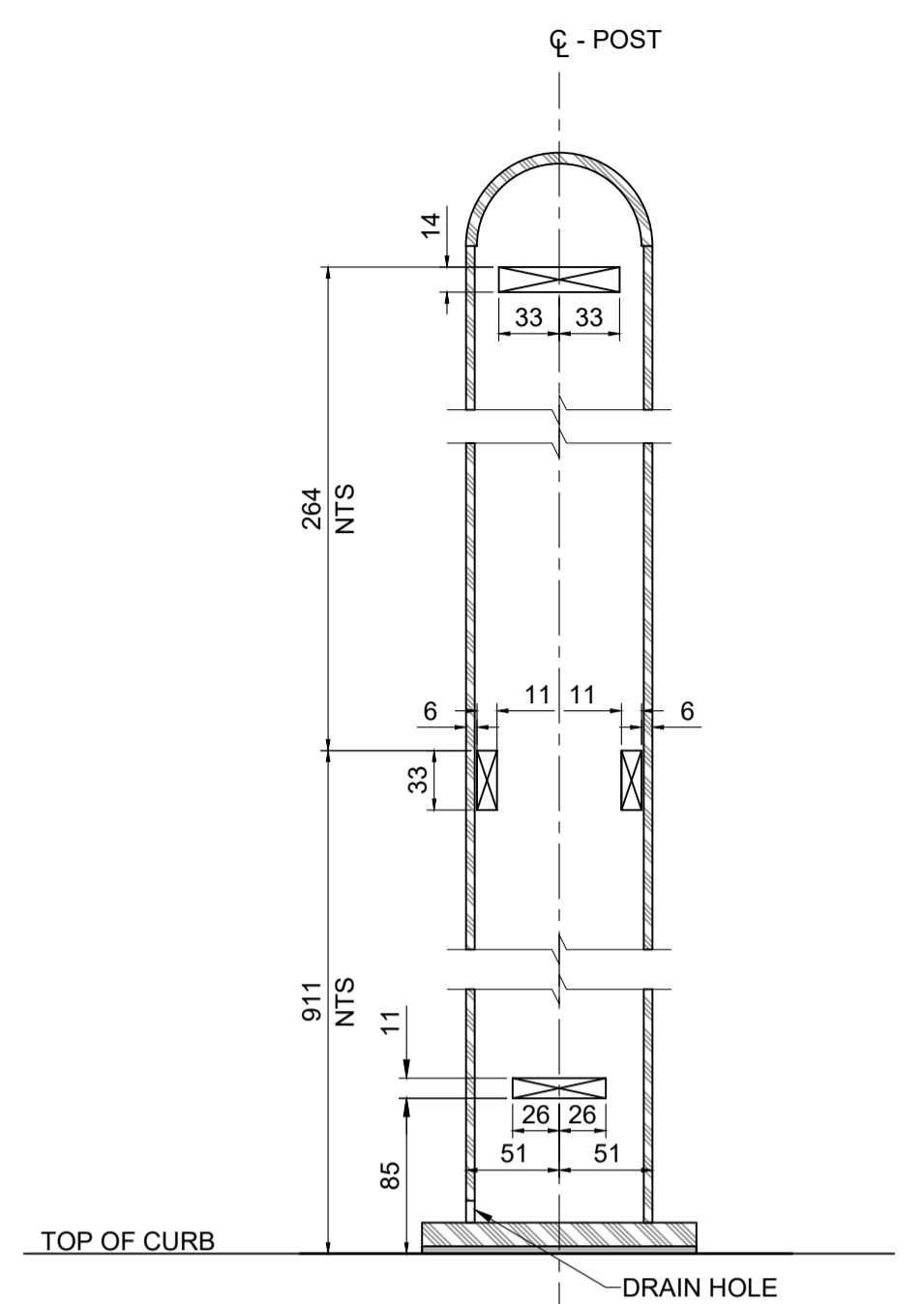
**1** **DETAIL - END POSTS**  
SCALE: 1:4



**2** **DETAIL - INTERMEDIATE POSTS**  
SCALE: 1:4



**B** **SECTION - HANDRAIL POST**  
SCALE: 1:4



**C** **SECTION - HANDRAIL POST**  
SCALE: 1:4



**METRIC**  
WHOLE NUMBERS INDICATE MILLIMETRES  
DECIMALIZED NUMBERS INDICATE METRES

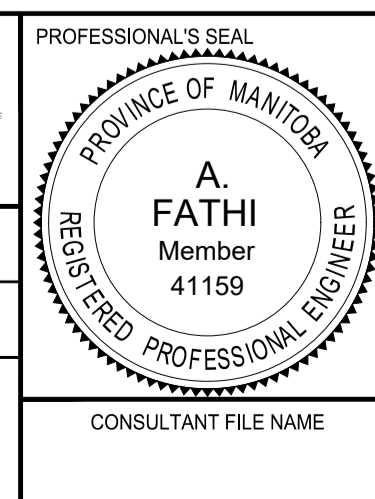
**LOCATION APPROVED**  
UNDERGROUND STRUCTURES

SUPR. U/G STRUCTURES COMMITTEE DATE

**NOTE:**  
LOCATION OF UNDERGROUND STRUCTURES AS SHOWN ARE BASED ON THE BEST INFORMATION AVAILABLE BUT NO GUARANTEE IS GIVEN THAT ALL EXISTING UTILITIES ARE SHOWN OR THAT THE GIVEN LOCATIONS ARE EXACT. CONFIRMATION OF EXISTENCE AND EXACT LOCATION OF ALL SERVICES MUST BE OBTAINED FROM THE INDIVIDUAL UTILITIES BEFORE PROCEEDING WITH CONSTRUCTION.

NO.	REVISIONS	DATE	BY
B	ISSUED FOR TENDER	18/09/04	BAP
A	ISSUED FOR 95% DESIGN REVIEW	18/08/07	BAP
		YY/MM/DD	BY

<b>MORRISON HERSHFIELD</b>	
DESIGNED BY: TN	CHECKED BY: AF
DRAWN BY: AH	APPROVED BY: BAP
HOR SCALE: AS SHOWN	VERT SCALE: AS SHOWN
DATE: 17/12/11	RELEASED FOR CONSTRUCTION: N/A



**THE CITY OF WINNIPEG**  
PUBLIC WORKS DEPARTMENT  
ENGINEERING DIVISION

**EMPRESS STREET PROJECT**  
EMPRESS STREET RETAINING WALL  
BICYCLE RAIL DETAILS 2

CITY DRAWING NUMBER: P-3494-165
SHEET 165 OF 168
DRAWING No. REV 165 B