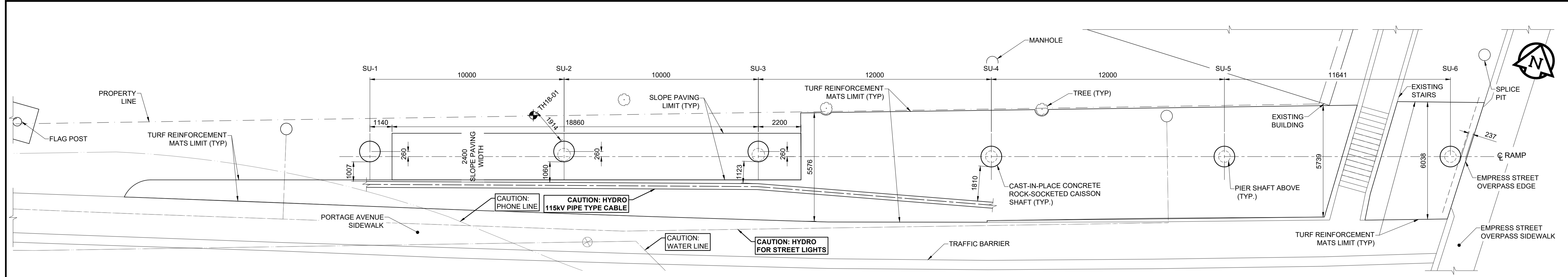
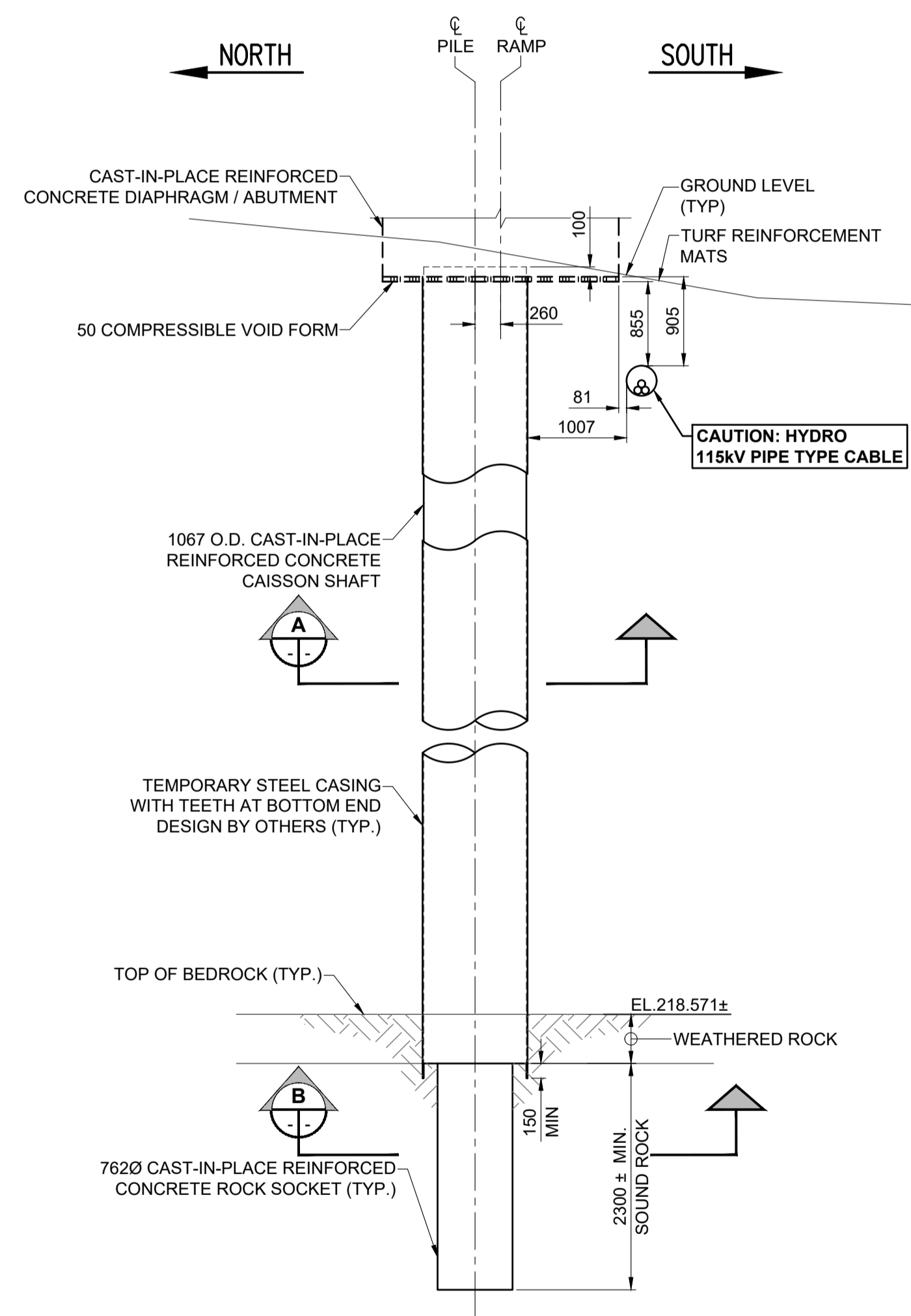


ISO A1 - 594mm x 841mm

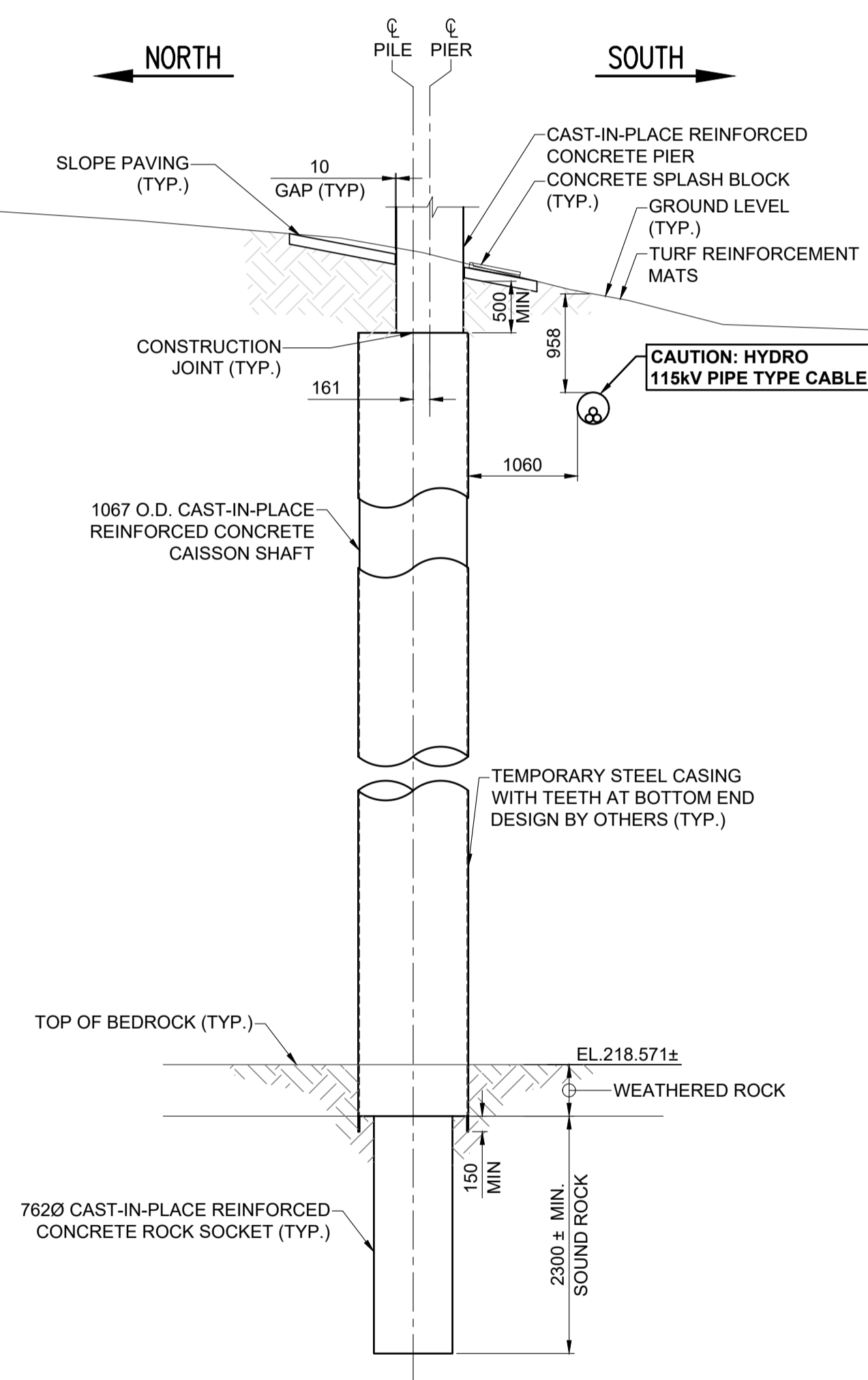
O:\Winipeg\Proj\W1600344_Design\1_Drawing\06_Sheets\Detailed Design\Structural\Pedestrian Ramps\W160034 - DD_NR.dwg
 Last Saved: 06/20/18 7:12 PM by Y.Moravsky
 Plotted: 06/20/18 8:33 PM by Alex Haggan



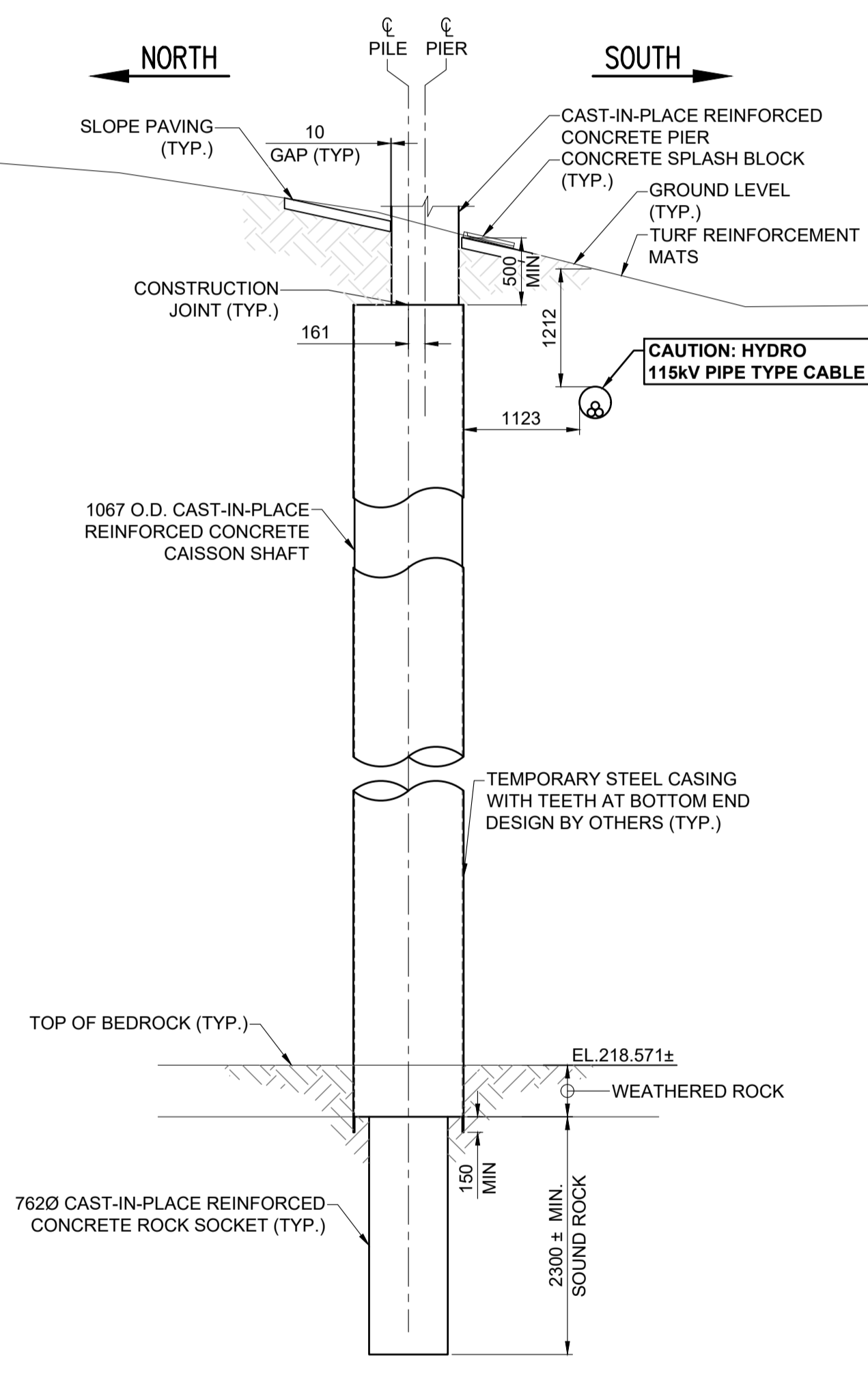
FOUNDATION PLAN
SCALE 1:100



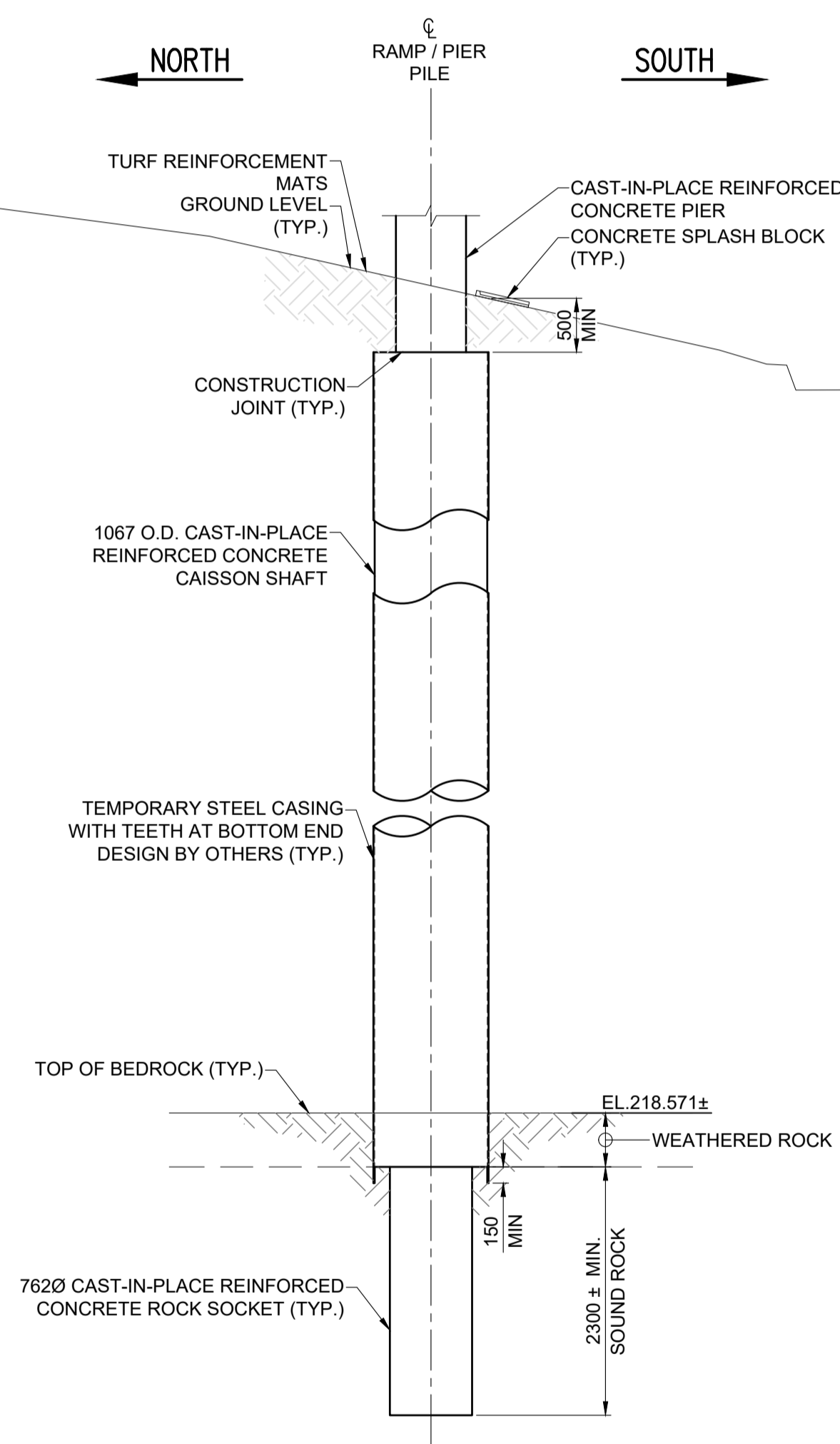
WEST ELEVATION
PILE AT SU-1
SCALE: 1:50



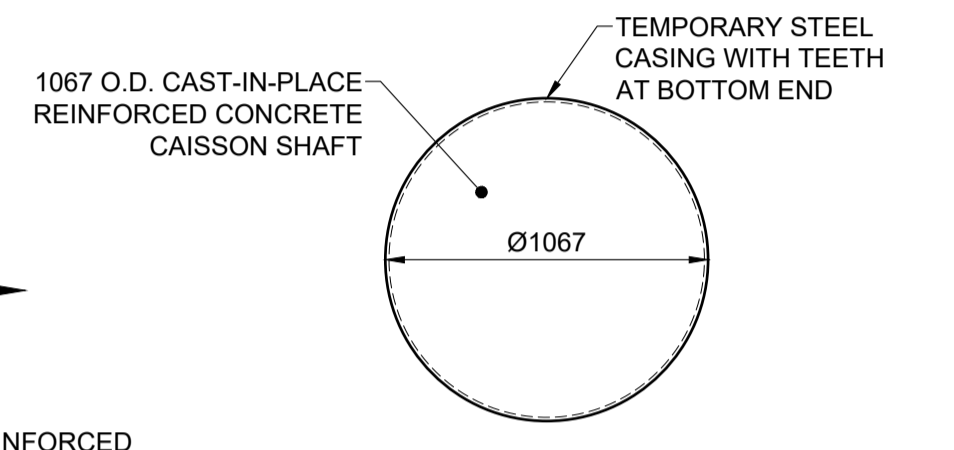
WEST ELEVATION
PILE AT SU-2
SCALE: 1:50



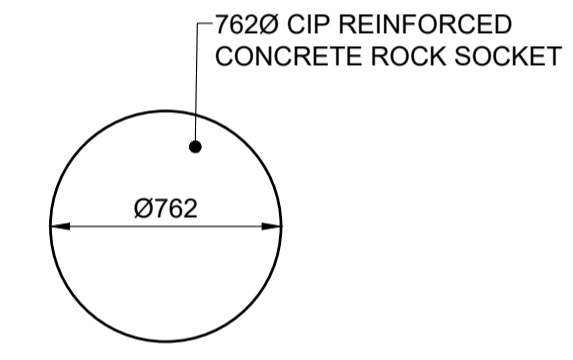
WEST ELEVATION
PILE AT SU-3
SCALE: 1:50



WEST ELEVATION
PILE AT SU-4, SU-5 & SU-6
SCALE: 1:50



SECTION A
SCALE: 1:25



SECTION B
SCALE: 1:25

- NOTES:**
- TH REFERS TO BOREHOLE TEST LOG. TEST HOLE TH18-01 WAS TAKEN BY TREK GEOTECHNICAL ON FEBRUARY 23, 2018.
 - CONTRACTOR IS RESPONSIBLE TO CONFIRM THE LOCATION OF ALL UTILITIES / SERVICES IN THE FIELD PRIOR TO CONSTRUCTION AND IS RESPONSIBLE FOR NOTIFYING THE APPROPRIATE COMPANY, DEPARTMENT OR PERSON(S) OF INTENTION TO CARRY OUT ITS OPERATIONS
 - ROCK SOCKET DEPTH TO BE CONFIRMED WITH GEOTECHNICAL ENGINEER
 - TOP OF BEDROCK ARE BASED ON TEST HOLE TH18-01
 - CONTRACTOR TO CONFIRM THE LEVEL OF TOP OF BEDROCK PRIOR TO CONSTRUCTION WITH PROOF-CORE AT CAISSONS LOCATION.
 - TEMPORARY REMOVAL OF EXISTING STAIR HANDRAIL TO ACCESS SU-5 IS ALLOWED. THE CONTRACTOR SHALL SUBMIT HIS COMPLETE CONSTRUCTION STAGING PLAN AND SCHEDULE TO THE CONTRACT ADMINISTRATOR FOR REVIEW AND ACCEPTANCE PRIOR TO PROCEEDING WITH THE WORK.
 - MINIMUM CLEAR DISTANCE BETWEEN SURFACE OF CONCRETE CAISSON SHAFT AND 115KV LINE IS 1.0m.

BID OPPORTUNITY No. 602-2018

| NORTH RAMP FOUNDATION CENTERLINE LAYOUT | | | |
|---|-----------|------------|---------------|
| SUBSTRUCTURE UNIT | NORTHING | EASTING | CUT OFF LEVEL |
| SU1 | 9017.3972 | 10752.0744 | 233.043 |
| SU2 | 9020.1614 | 10761.6848 | 232.226 |
| SU3 | 9022.9256 | 10771.2951 | 231.959 |
| SU4 | 9025.9928 | 10782.8994 | 231.975 |
| SU5 | 9029.3098 | 10794.4319 | 232.032 |
| SU6 | 9037.5275 | 10805.6189 | 231.377 |



METRIC
WHOLE NUMBERS INDICATE MILLIMETRES
DECIMALIZED NUMBERS INDICATE METRES

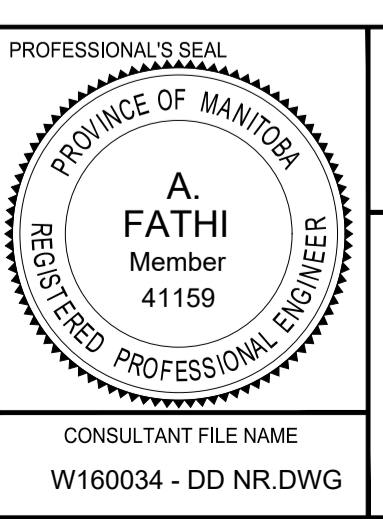
LOCATION APPROVED
UNDERGROUND STRUCTURES

DATE: _____

NOTE:
LOCATION OF UNDERGROUND STRUCTURES AS SHOWN ARE BASED ON THE BEST INFORMATION AVAILABLE BUT NO GUARANTEE IS GIVEN THAT ALL EXISTING UTILITIES ARE SHOWN OR THAT THE GIVEN LOCATIONS ARE EXACT. CONFIRMATION OF EXISTENCE AND EXACT LOCATION OF ALL SERVICES MUST BE OBTAINED FROM THE INDIVIDUAL UTILITIES BEFORE PROCEEDING WITH CONSTRUCTION.

| NO. | REVISIONS | DATE | BY |
|-----|------------------------------|----------|-----|
| C | ISSUED FOR TENDER | 18/09/04 | BAP |
| B | ISSUED FOR 95% DESIGN REVIEW | 18/08/07 | BAP |
| A | ISSUED FOR 50% DESIGN REVIEW | 18/06/28 | BAP |

| DESIGNED BY | | CHECKED BY | |
|-------------|----------|-------------|--|
| YM | AF | | |
| DRAWN BY | | APPROVED BY | |
| ALP | BAP | | |
| HOR SCALE | | VERT SCALE | |
| AS SHOWN | AS SHOWN | | |
| DATE | | DATE | |
| | | | |



THE CITY OF WINNIPEG
PUBLIC WORKS DEPARTMENT
ENGINEERING DIVISION

EMPRESS STREET PROJECT
PEDESTRIAN ACCESSIBILITY RAMPS
NORTH RAMP
FOUNDATION DETAILS

CITY DRAWING NUMBER: P-3494-140
SHEET 140 OF 168
DRAWING No. 140
REV c

CONSULTANT FILE NAME: W160034 - DD NR.DWG