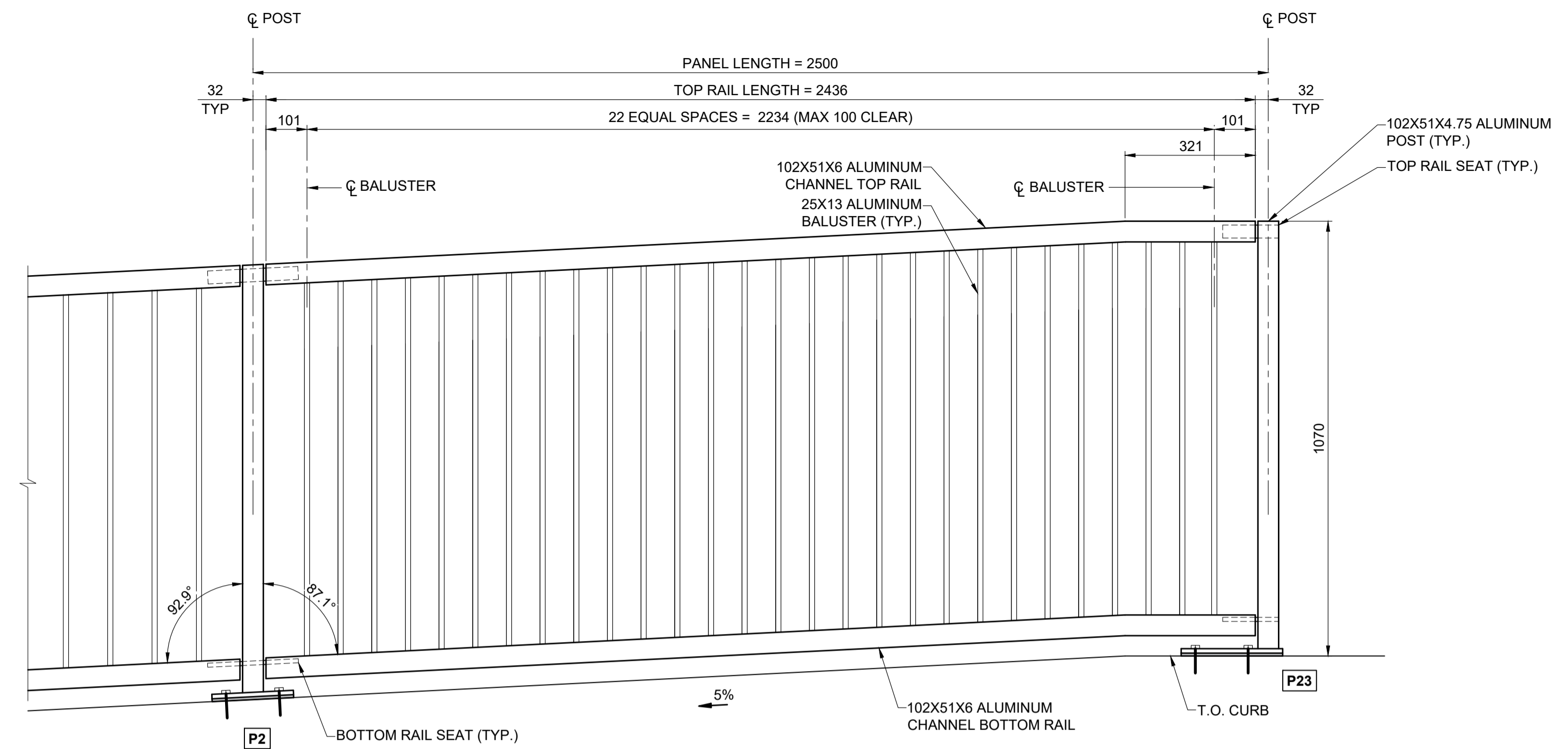
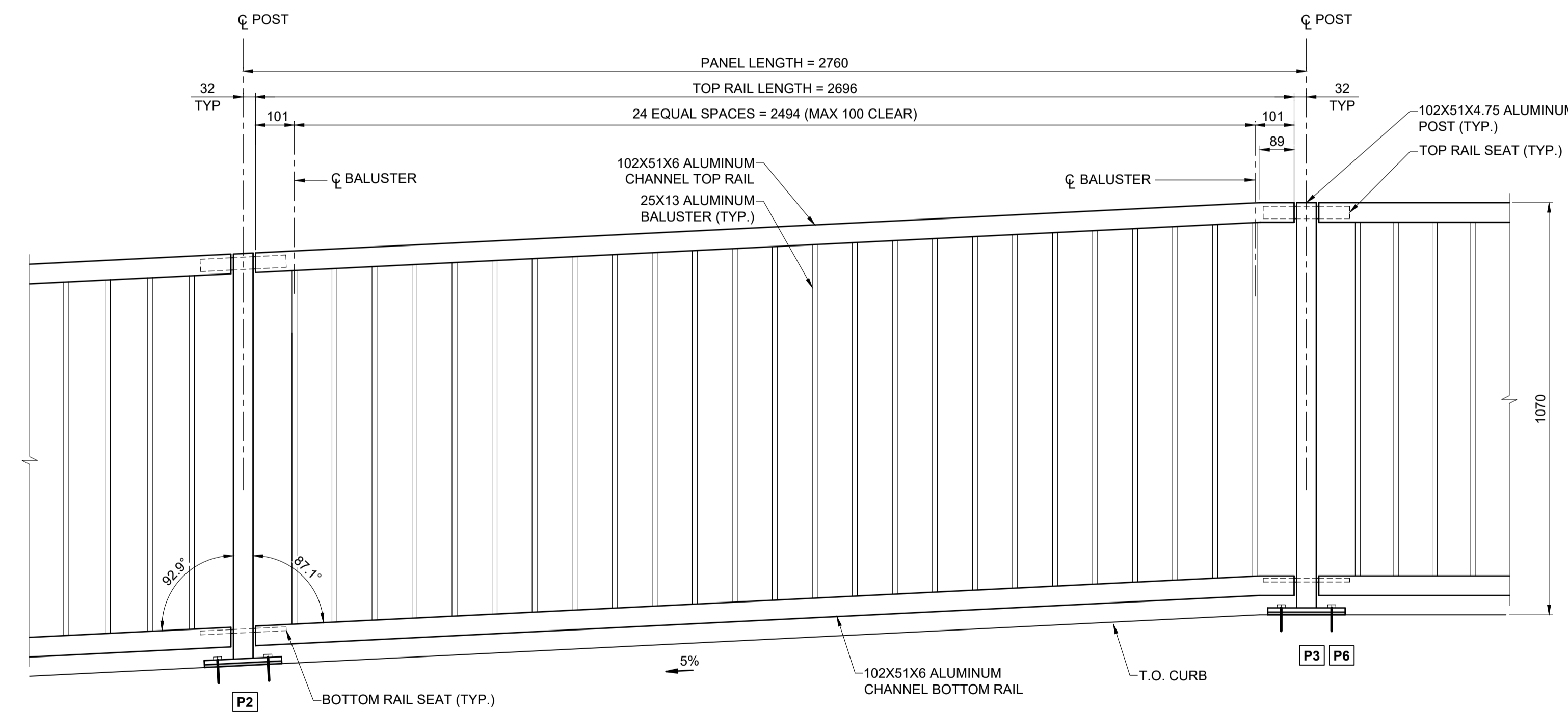


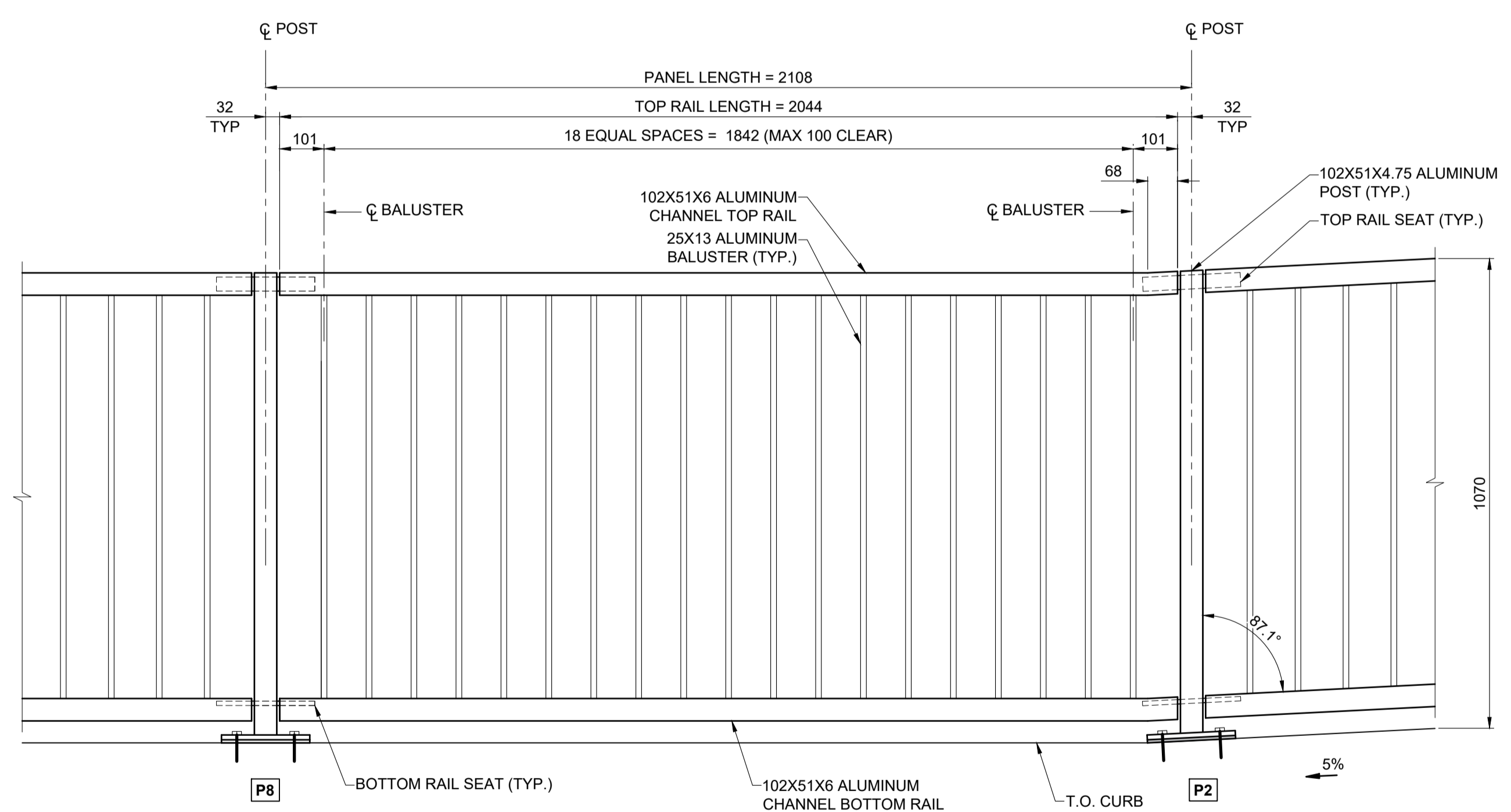
**END PANEL Mk. A ELEVATION**  
SCALE: 1:10



**END PANEL Mk. B1 ELEVATION**  
SCALE: 1:10



**INTERMEDIATE PANEL Mk. D ELEVATION**  
SCALE: 1:10



**INTERMEDIATE PANEL Mk. H1 ELEVATION**  
SCALE: 1:10

- NOTES:**
1. ALUMINUM EXTRUSIONS SHALL CONFORM TO ASTM B221 ALLOY 6351-T6.
  2. THE M.I.G. PROCESS OF WELDING SHALL BE USED.
  3. RAIL POSTS AND BALUSTERS SHALL BE SET PLUMB.
  4. PLACE NEOPRENE PAD UNDER EACH POST BETWEEN BASE PLATE OR SHIM AND CONCRETE SURFACE. ALUMINUM SHIMS MAY BE REQUIRED FOR VERTICAL ALIGNMENT.
  5. HANDRAIL ANCHOR INSERTS SHALL BE ACROW-RICHMOND TYPE DGRS-1.



**METRIC**  
WHOLE NUMBERS INDICATE MILLIMETRES  
DECIMALIZED NUMBERS INDICATE METRES

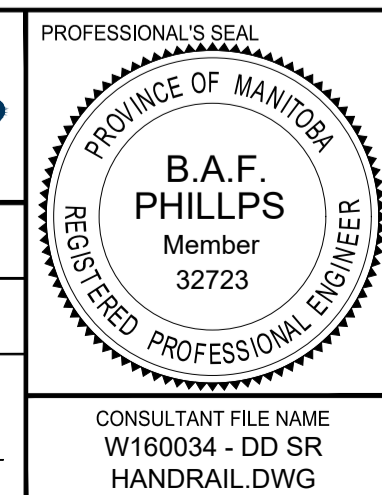
**LOCATION APPROVED**  
UNDERGROUND STRUCTURES

SIJR, UIG STRUCTURES COMMITTEE DATE

**NOTE:**  
LOCATION OF UNDERGROUND STRUCTURES AS SHOWN ARE BASED ON THE BEST INFORMATION AVAILABLE BUT NO GUARANTEE IS GIVEN THAT ALL EXISTING UTILITIES ARE SHOWN OR THAT THE GIVEN LOCATIONS ARE EXACT. CONFIRMATION OF EXISTENCE AND EXACT LOCATION OF ALL SERVICES MUST BE OBTAINED FROM THE INDIVIDUAL UTILITIES BEFORE PROCEEDING WITH CONSTRUCTION.

NO.	REVISIONS	DATE	BY
B	ISSUED FOR TENDER	18/09/04	BAP
A	ISSUED FOR 95% DESIGN REVIEW	18/08/07	BAP

<b>MORRISON HERSHFIELD</b>		DESIGNED BY: YM		CHECKED BY: BAP	
DRAWN BY: ALP		APPROVED BY: BE		RELEASED FOR CONSTRUCTION: N/A	
HOR SCALE: AS SHOWN		VERT SCALE: AS SHOWN		DATE: _____	



**THE CITY OF WINNIPEG**  
PUBLIC WORKS DEPARTMENT  
ENGINEERING DIVISION

**EMPRESS STREET PROJECT**  
PEDESTRIAN ACCESSIBILITY RAMPS  
SOUTH RAMP  
PEDESTRIAN HANDRAIL DETAILS 2

CITY DRAWING NUMBER: P-3494-130  
SHEET 130 OF 168  
DRAWING No. 130 REV B